

AXIS StorPoint™ HD

**The Best Solution for Adding
Removable Storage to Your Network**



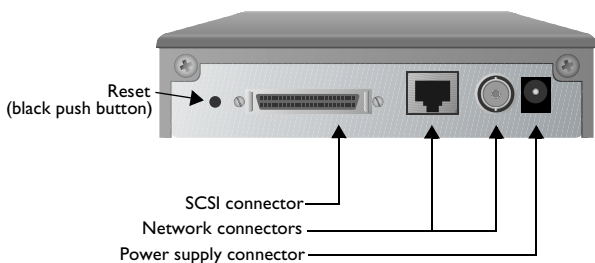
**Q u i c k
I n s t a l l a t i o n
G u i d e**

Quick Installation Guide

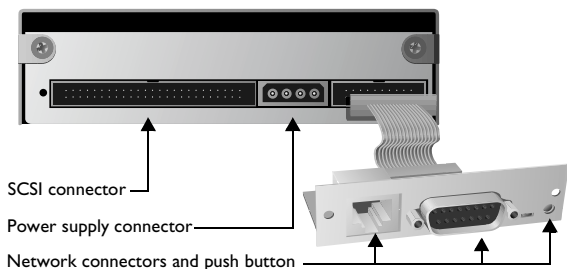


This guide covers the installation and basic setup procedures for your AXIS StorPoint HD. If you need more detailed instructions, e.g. regarding Configuration and Management of the server, please refer to the AXIS StorPoint HD User's Manual.

Basic Installation



Rear view of the standalone version AXIS StorPoint HD



Rear view of the tower module AXIS StorPoint HD/T

Before you begin:

- *Standalone version only:* Check that the power supply (PS-C, 12V DC) is marked with the correct mains voltage.
- Make sure that power is not connected to the StorPoint HD server or any of the Jaz drives. The SCSI bus may be damaged if you connect or disconnect any units when the power is on.
- Make sure that your network is ready to accept a new node.
- Any network configuration should always involve the Network Administrator.
- Record the StorPoint HD server serial number. You will need this number when installing the StorPoint HD server. The number is found on the underside label of the server.

Connecting Jaz disk drives to the StorPoint HD Server

Up to seven SCSI Jaz disk drives can be serviced by a single Axis StorPoint HD Server. The drives are connected using the appropriate SCSI cable, which must be ordered separately.

1. Connect the SCSI cable to the SCSI connector on the StorPoint.
2. Connect the SCSI cable to the Jaz disk drive(s).
3. Set the SCSI address of the Jaz disk drives. Each connected drive must have a unique SCSI address. SCSI addresses 0 through 6 may be used.
4. The last drive in the SCSI chain must be terminated. No other Jaz disk drive should be terminated.

Connecting the StorPoint HD server to the network

1. Connect the network cable to the appropriate connector.
2. Power up the StorPoint HD server and the Jaz drives. If installing the standalone version, make sure all the drives are powered up before the server. When the STATUS indicator stops flashing and remains unlit, the StorPoint HD server is ready for use.

Network Configuration



Before you begin:

- The configuration described below applies to Windows NT systems only.
- You will need *administrator* privileges on the NT server for the configuration.

Windows NT

Note: Setting the Internet address is **not** needed for SMB over NetBIOS/NetBEUI or NetWare.

On Windows NT systems follow the steps below to set the Internet address.

1. Find an unused Internet address for your StorPoint HD server.
2. Send the Internet address to the StorPoint HD server. The Ethernet address or node address is your StorPoint HD server serial number divided into six groups of two digits each. (See example below.)

```
arp -s <Internet address> <Ethernet or node address>
ping <Internet address>
```

Example: (Use the Internet address from step 1.)

```
arp -s 192.36.253.80 00-40-8c-10-00-86
ping 192.36.253.80
```

Accessing Jaz drives



The AXIS StorPoint HD is integrated into your network operating system just like any other file server and you use the same commands to access it. To be able to access the Jaz disks from your Windows applications, you need to make them available to your system, i.e. “mount” the StorPoint HD server. On PC systems this is typically done by mapping the server to a drive letter.

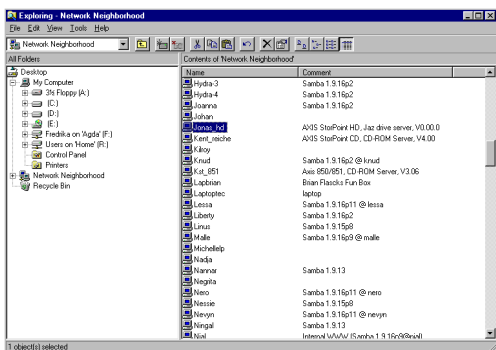
Once the StorPoint HD server has been mounted, you access it just

as any other disk drive or file server connected to your system. Select the appropriate procedure for mounting the StorPoint HD server from the following sections:

Windows 95 & NT 4.x (SMB)



1. Start the Windows Explorer from the Start/Programs Menu.

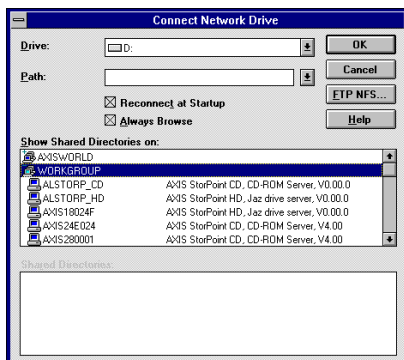


2. In the Network Neighborhood locate your Axis StorPoint HD Server under Entire Network/ Workgroup. The default name is Axis<nnnnnn> where <nnnnnn> are the six last digits of the serial number.
3. Right-click the Jaz folder to map the server.

Windows 3.x (SMB)



1. Start the File Manager.
2. Select Connect Network Drive... in the Disk menu. The Connect Network Drive dialog is shown. You may have to click the Browse>> button to see the complete dialogue.



3. Double-click Workgroup in the top listing and double-click the entry for your new StorPoint HD server. The default name is AXIS<nnnnnn>, where <nnnnnn> are the six last digits of the serial number.
4. From the bottom listing, select the Jaz folder and click OK.

OS/2 (SMB)



1. Open an OS/2 window.
2. At the OS/2 prompt, type:
`net use <drive>: \\AXIS<nnnnnn>\hd, where
<nnnnnn> are the last six digits of the serial number.`

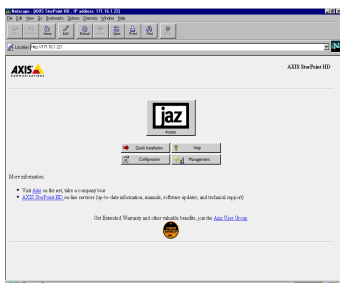
Example: (StorPoint HD server serial no. = 00408C18025C.)

`net use E: \\AXIS18025C\hd`

Web browsers (HTTP)



1. Start the Web browser, e.g. Netscape Navigator.
2. Select Open Location from the File menu and enter the URL of the StorPoint HD server, i.e. the Internet address or host name.
3. Click Open. At the StorPoint HD server home page shown below click Jaz. Select Add Bookmark in the Bookmarks menu.



Accessing a new Jaz Disk



When you insert a Jaz disk into any connected drive, a directory is created on the server. The directory name is the Jaz disk volume name, or nnnnnnnn, where nnnnnnnn is a unique 8 digit number. The Jaz disk data is accessed through this directory. Some disk software requires that the Jaz disk is assigned an individual drive letter in Windows. Please refer to the User's Manual, Section 4 for details.

AXIS StorPoint HD Quick Installation Guide

Part No: 15542

Revision: 1.0 Date: October1997

Copyright © Axis Communications AB, 1997

Axis Communications

URL: <http://www.axis.com/>

Lund

Phone: +46 46 270 18 00

Boston

Phone: +1 800 444 AXIS

Paris

Phone: +33 1 49 69 15 50

London

Phone: +44 1753 714310

München

Phone: +49 89 95 93 960

Tokyo

Phone: +81 3 3545 8282/8

Singapore

Phone: +65 250 8077

Hong Kong

Phone: +852 2836 0813

Beijing

Phone: +86 10 6510 2705

Shanghai

Phone: +86 21 6445 4522

Taipei

Phone: +886 2 8780 5972

Seoul

Phone: +82 2 780 9636

