

This document is a complement to the explanation of 'serial port profile printing' on page 13 in the 'quick start' manual.



SERIAL PORT PROFILE PRINTING

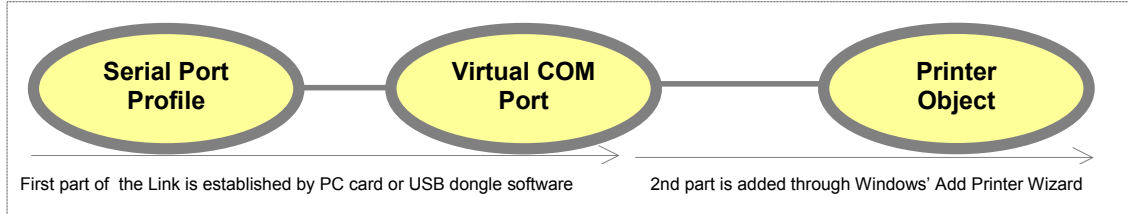
NETWORK PRINT SERVERS

AXIS 5800+ MOBILE // AXIS 5810

AXIS 5800+ Mobile and AXIS 5810 support printing from any mobile device using the Serial Port Profile (SPP) in Bluetooth. This document describes the basic principles on how to print using these devices. The exact menus and dialogues may vary from the different devices such as PC card, USB dongles or PDAs.

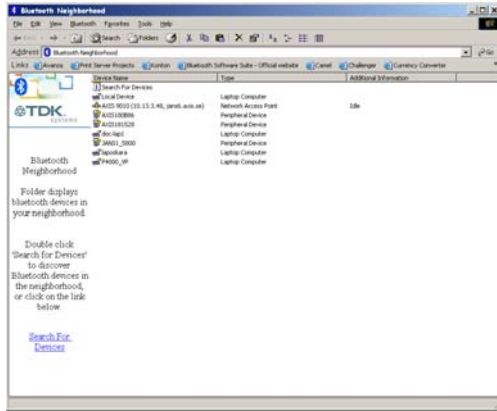
Windows Example (e.g. PC or Laptop using a PC card or USB dongle)

To print from a Windows PC or laptop using the Serial Port Profile, a connection link between the Serial Port Profile, Virtual COM Port and a Printer Object will need to be established. The first part, connecting the Serial Port Profile communication to a COM port, is automatically performed by the accompanying software to the PC card, USB dongle or PDA when "logging on".

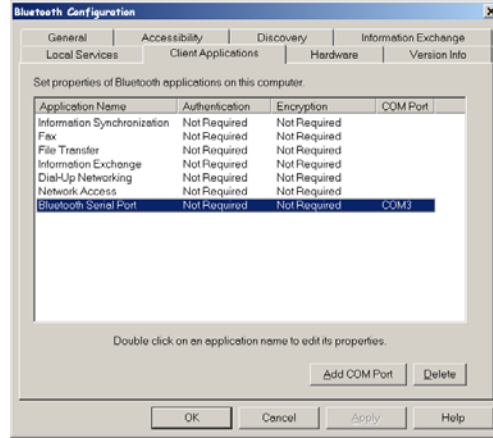


How to perform a first time installation

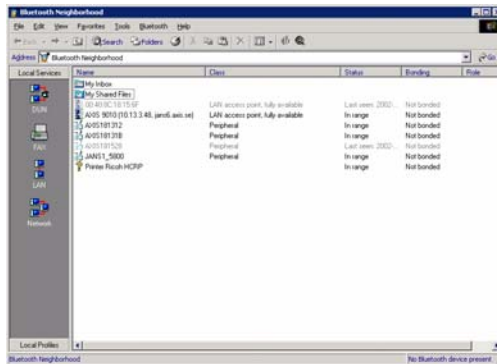
Many vendor's software has a "Bluetooth Neighborhood" in which Bluetooth units are displayed and can be connected to using various connection methods (profiles). Through the menus and dialogues of your preferred vendor's software you will find out which virtual COM port the Serial Port Profile is associated with. Please make a note of this. Below are a number of vendor's dialogues.



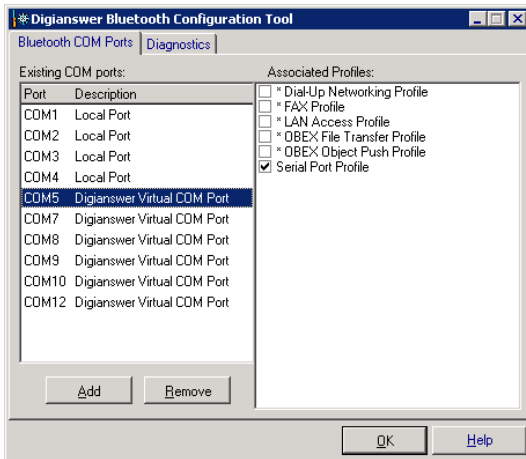
TDK Bluetooth Neighbourhood



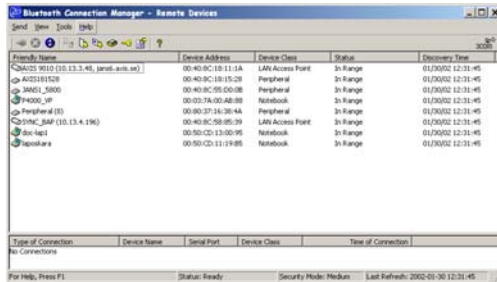
TDK Bluetooth Configuration Tool



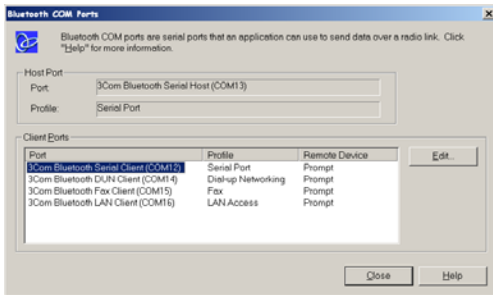
Bluetooth Software Suite Bluetooth Neighbourhood



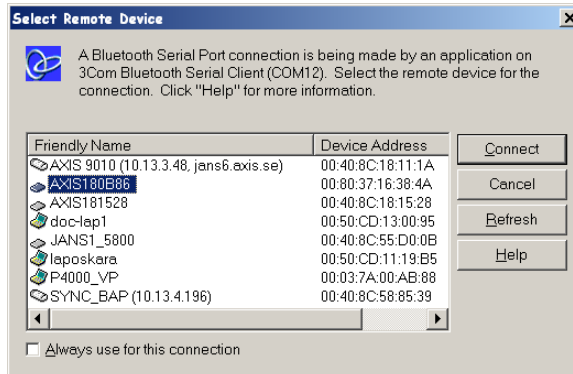
Bluetooth Software Suite Configuration Tool



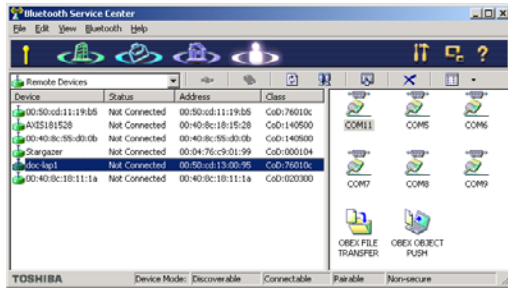
3COM Bluetooth Neighbourhood



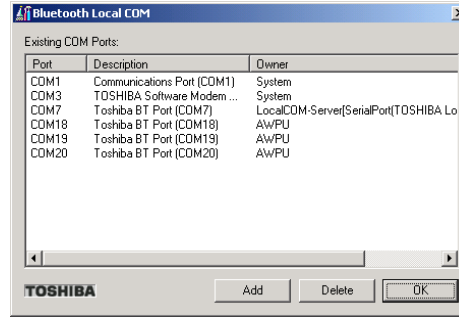
3COM COM port configuration tool



3COM remote device selection dialog



Toshiba Bluetooth Service Center application



Toshiba COM port dialog

The next step is to create a Printer Object. This is done in Windows through the standard “Add Printer Wizard”. Select to create a “Local Printer” and choose the same Printer Port as the COM port that you earlier made a note of from your Bluetooth Software. Go through the rest of the Wizard until you created have a new printer object. Choose a printer driver suitable for your printer. Preferably name the printer object “AXIS Wireless Printer” to distinguish it from other wired printers. The installation is now ready.



Note: Some applications will create the printer object automatically when installing the software. Check your printer folder after installation and check if a new object has been added.

How to Print?

To print, simply connect to AXIS 5800+ Mobile or AXIS 5810 by selecting a Serial Port Profile communication in your Bluetooth Neighbourhood and go to your application’s “File” and “Print” menu. Select the “AXIS Wireless Printer” you created and print. Most client applications require you to first establish a connection to the print server from the "Bluetooth Neighbourhood" or similar application. But in some instances, as for 3COM above, you will be presented a dialog allowing you to choose destination for each print job, after which the connection will be completed automatically.