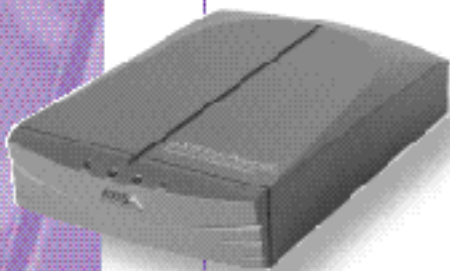


AXIS StorPoint™ CD

The High Performance Multiprotocol
CD-ROM Server for All Networks



Q u i c k
I n s t a l l a t i o n
G u i d e

Quick Installation Guide

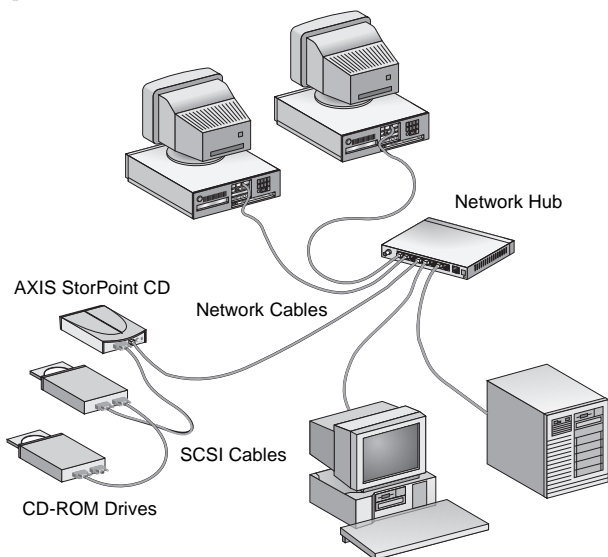


This guide covers the installation and basic setup procedures for your AXIS StorPoint CD. If you need more detailed instructions, e.g. regarding Configuration and Security Management of the server, please refer to the AXIS StorPoint CD User's Manual.

Basic Installation



A single AXIS StorPoint CD can service up to 7 or 14 SCSI CD-ROM drives, depending on model. The drives should be connected using the appropriate SCSI cables, which must be ordered separately.



Ethernet network with a standalone version AXIS StorPoint CD

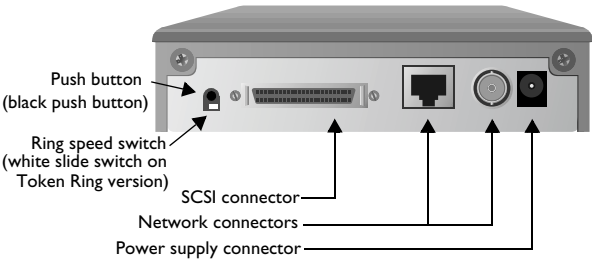
Before you begin:

- *Standalone version only:* Check that the power supply (PS-C or PS-E, 12V DC) is marked with the correct mains voltage.
- Make sure that power is **not** connected to the StorPoint CD or any of the CD-ROM drives when making changes to the SCSI chain. The SCSI bus may be damaged, if you connect or disconnect any units when the power is on.
- Always consult the Network Administrator before making changes to the network configuration.
- Make a note of the StorPoint CD serial number for future reference during the network configuration. You will find the number on the underside label.

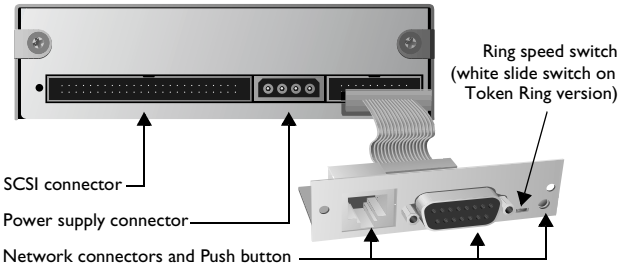
Connecting the Hardware

To install the StorPoint CD, follow these steps:

1. Connect the SCSI cable to the SCSI connector on the StorPoint CD.
2. Connect the SCSI cable to the CD-ROM drive(s).
3. Set the SCSI address of the CD-ROM drives. Each connected drive must be assigned a unique SCSI address. SCSI addresses 0 through 6 may be used. Refer to the CD-ROM drive documentation.
4. Connect a SCSI terminator to the last drive in the SCSI chain. The other CD-ROM drives should not be terminated.
5. Attach the network cable to the appropriate network connector.
6. If you have a Token Ring network, set the Ring speed switch to the speed of your network; move the switch to the left for 4Mb/s and the right for 16 Mb/s (as viewed from the rear).
7. Power up the drives, then the StorPoint CD. If installing the standalone version, make sure all the drives are powered up before the StorPoint CD. When the Status indicator stops flashing and remains off, the StorPoint CD is ready for use.
8. Insert a disc into a drive and verify that the CD indicator turns on. If it remains off, verify your SCSI cable connections and then power cycle the StorPoint CD.



Rear view of the standalone version AXIS StorPoint CD



Rear view of the tower module AXIS StorPoint CD/T



Installation as an NDS Server

When used as an NDS server, the StorPoint CD must first be installed in the NDS tree.

Note: If this is the first StorPoint CD being installed in your NDS tree, the user/administrator defined in the `NDSAdminName` parameter must have Supervisor rights on the [Root] object. The StorPoint CD will try to extend the NDS Schema with a new attribute to the "NCP server" class. The extension is needed for storing the file system rights, i.e. access rights to the CD-ROMs and configuration files. The new attribute is called "AXIS:SPcd:rights" and will not affect the operation of your NetWare servers. The schema extension has been approved by Novell.

Follow these steps:

1. First you need to verify that the NDS tree is synchronized. To do that, load `DSREPAIR` on the server in the NDS tree and select `Unattended full repair`.
2. From Windows Explorer or File Manager, locate the configuration file at `AXISnnnnnn\config\config.ini`, where `nnnnnn` are the last six digits of the StorPoint CD serial number.
3. Open `config.ini` with a text editor and enter the appropriate settings for these NetWare parameters:

NDSEnable	Must be set to <code>yes</code> to enable the NDS login.
NDSTreeName	The name of the tree that you want to install the server into, e.g. <code>ACMECORP</code> .
NDSContext	The context in the NDS tree where you want to install the server, e.g. <code>corp.acme</code> .
NDSAdminName	Distinguished name of a user or administrator with Supervisor rights on the [Root] object and Create rights in the context where you are installing the server, e.g. <code>admin.acme</code> .
NDSAdminPassword	The password of the administrator entered in <code>NDSAdminName</code> parameter.
NDSInstall	Change to <code>install</code> when you are ready to install the server. <code>Forced</code> will overwrite the existing server object without warning.

4. Save the `config.ini` file to start the installation. It will take about 15 seconds.
5. After the installation you must logout and then login again to have all the necessary rights on the StorPoint CD server object and the associated volume.

Using NetWare/IP

To use the IP protocol in NetWare, you must set the Internet address. See “Setup for TCP/IP”.

Follow these steps to set up the communication:

1. From Windows Explorer or File Manager, locate the configuration file at `AXISnnnnnn\config\config.ini`, where `nnnnnn` are the last six digits of the serial number.
2. Open `config.ini` with a text editor and enter the appropriate settings for these parameters:

PrimaryDNS	The Internet address of the primary DNS server.
SecondaryDNS	The Internet address of the secondary DNS server, should the primary DNS server be unavailable or disconnected.
NetWareIP_Enable	Enables NetWare over the IP protocol.
NetWareIP_DSS_Server	The host name or Internet address of the DSS server.

3. Reboot the StorPoint CD and wait 5 minutes. Clients that support the NetWare/IP protocol will now connect directly to the StorPoint CD, i.e. peer-to-peer. Clients without NetWare/IP support will be routed through a Novell server with an IPX/IP gateway.

Setup for TCP/IP



Windows 95, Windows NT, UNIX and OS/2

To access the StorPoint CD in the TCP/IP environment, e.g. from a Web browser, you must assign a valid Internet address.

Assigning an Internet Address and a Host Name

1. Find an unused Internet address and choose a unique host name for your StorPoint CD.
2. The host names are normally located in these directories:
 - Windows 95 - `c:\windows\hosts`
 - Windows NT - `c:\winnt\system32\drivers\etc\hosts`
 - UNIX - `/etc/hosts`
 - OS/2 - `c:\etc\hosts`
3. Add the Internet address and host name to your system host table by appending the following line:

```
<Internet address>    <host name>
```

Example:

```
192.36.253.80 cdserv
```

4. If your system utilizes alias name databases such as Yellow Pages (YP) or Network Information Services (NIS), you should update these.

Example: (The commands may be different on your system.)

```
cd /var/yp  
make
```

Using ARP in Windows 95 and Windows NT

You will need *administrator* privileges on the Windows NT server to configure a node on a TCP/IP network.

Enter the following commands from the DOS prompt. The Ethernet address or node address is your StorPoint CD serial number divided into six pairs of digits.

```
arp -s <Internet address> <Ethernet or node  
address>  
ping <Internet address>
```

Example:

```
arp -s 192.36.253.80 00-40-8c-10-00-86  
ping 192.36.253.80
```

Note: In Windows 95, the `arp` command cannot be used if you have an empty ARP table. Type: `arp -a` to view the ARP table. If it is empty you must ping an existing unit on your network before you can set the Internet address of your StorPoint CD.

Using ARP in UNIX and OS/2

You will need *root* privileges on your UNIX system.

Enter the following commands. The Ethernet address or node address is your StorPoint CD serial number divided into six pairs of digits.

```
arp -s <host name> <Ethernet or node address>  
temp  
ping <host name>
```

Example:

```
arp -s cdserv 00:40:8c:10:00:86 temp  
ping cdserv
```

Accessing CD-ROMs



Because the AXIS StorPoint CD integrates into your network operating system just like any other file server, you may use the standard commands to access it.

Inserting a CD-ROM into a connected drive, causes a new directory to be created. The directory name is the CD-ROM volume name, or `cd_nnnnn`, where `nnnnn` is a unique 5 digit number. You access the CD-ROM data through this directory.

To access the CD-ROMs from your Windows, DOS or UNIX applications, you must make them available to your system, i.e. to “mount” the StorPoint CD. On PC systems this is typically done by mapping the StorPoint CD volumes to a drive letter. Some CD-ROM software requires the CD-ROM to be assigned an

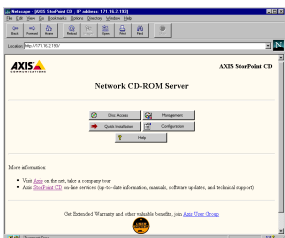
individual drive letter to run properly.

Once the StorPoint CD has been mounted, you access it just as any other disk drive or file server connected to your system. Select the appropriate procedure for mounting the StorPoint CD.

Web browsers (HTTP)

Note: Before accessing the StorPoint CD from a Web browser, you must set the Internet address, see “Setup for TCP/IP”.

1. Start the Web browser, e.g. Netscape Navigator.
2. Enter the URL of the StorPoint CD, i.e. the Internet address or the host name, in the Location field.

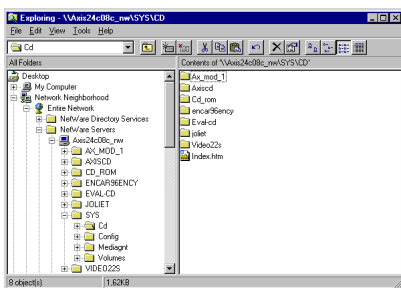


Click Disc Access
to access the CD-ROMs

3. Click Disc Access to access the CD-ROMs.
4. Select Add Bookmark in the Bookmarks menu.

Windows 95 and Windows NT 4.x (NetWare)

1. Start the Windows Explorer from the Start/Programs Menu.
2. In Network Neighborhood, locate your StorPoint CD under Entire Network/ NetWare Servers. The default name is *Axi5nnnnnn_nw* where *nnnnnn* are the six last digits of the serial number.

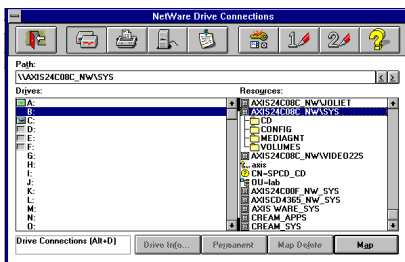


Right click the
CD folder and
select Map
Network Drive

3. Expand the SYS folder.
4. The Cd folder contains all the CD-ROMs. Right click the Cd folder and select Map Network Drive... to map it to a drive letter.

Windows for Workgroups (NetWare)

1. Start the File Manager and select Connect Network Drive... from the Disk menu.
2. Select the entry for your new StorPoint CD. The default name is *AXISnnnnnn_NW*, where *nnnnnn* are the last six digits of the serial number.
3. Click the Login button and enter your user name and password.
4. Click the Drive Connections button and double click *AXISnnnnnn_NW\SYS*.

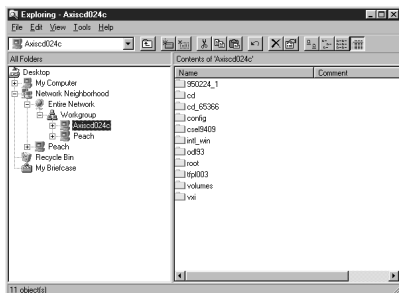


Click and drag the CD folder to an unused drive letter.

5. The CD folder contains all the CD-ROMs. Drag the CD folder to an available drive letter to map it to a drive letter.
6. Click the Exit button.

Windows 95 and Windows NT 4.x (Microsoft Networks - SMB)

1. Start the Windows Explorer from the Start/Programs Menu.

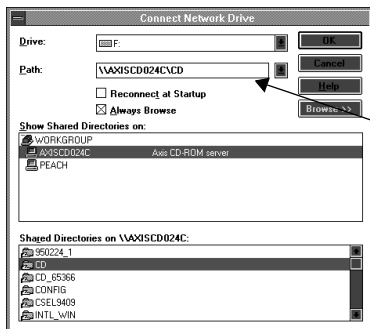


Right click the Cd folder and select Map Network Drive

2. In Network Neighborhood, locate your StorPoint CD under Entire Network/ Workgroup. The default name is *Axisnnnnnn* where *nnnnnn* are the six last digits of the serial number.
3. The cd folder contains all the CD-ROMs. Right click the cd folder and select Map Network Drive... to map it to a drive letter.

Windows for Workgroups (Microsoft Networks - SMB)

1. Start the File Manager and select Connect Network Drive... from the Disk menu. The Connect Network Drive dialog is displayed. You may have to click the Browse>> button to see the complete dialogue.



Use default, or select an unused drive letter.

In Path, type:
\\AXISnnnnnn\CD

Click OK.

2. Double click Workgroup in the top listing and double click the entry for your new StorPoint CD. The default name is AXISnnnnnn, where nnnnnn are the six last digits of the serial number.
3. The CD folder contains all the CD-ROMs. From the bottom listing, select the CD folder and click OK.

OS/2 (IBM Networks - SMB)

1. Open an OS/2 window.
2. At the OS/2 prompt, type:

```
net use <drive>: \\AXISnnnnnn\cd
```

where nnnnnn are the last six digits of the serial number.

Example: (StorPoint CD serial no. = 00408CDB000B.)

```
net use E: \\AXISDB000B\cd
```

UNIX (NFS)

To mount the StorPoint CD on a UNIX system, you need *root* privileges. Perform the following:

1. Create a directory for the StorPoint CD.

```
mkdir <directory>
```

2. Mount the StorPoint CD.

```
mount <host name>:/ <directory>
```

where <host name> is the host name assigned to the StorPoint CD during the TCP/IP configuration.

Example:

```
mkdir storpoint
```

```
mount cdserv:/ storpoint
```

AXIS StorPoint CD Quick Installation Guide

Part No: 15095

Revision: 1.3 Date: October 1997

Copyright © Axis Communications AB, 1996-1997

Axis Communications

URL: <http://www.axis.com/>

Lund

Phone: +46 46 270 18 00

Boston

Phone: +1 800 444 AXIS

Paris

Phone: +33 1 49 69 15 50

London

Phone: +44 1753 714310

Tokyo

Phone: +81 3 3545 8282

Singapore

Phone: +65 250 8077

Hong Kong

Phone: +852 2836 0813

Beijing

Phone: +86 10 6510 2705

Shanghai

Phone: +86 21 6445 4522

Taipei

Phone: +886 2 8780 5972

Seoul

Phone: +82 2 780 9636

