

# **AXIS 5800+ Mobile**

## **Quick Installation Guide**

## Regulatory Information

Tested to comply with FCC Standards FOR HOME OR OFFICE USE.

This product must be installed and used in strict accordance with the instructions given in the user documentation. The AXIS 5800+ complies with the following radio frequency and safety standards:

**Industry Canada (IC) Canada** - - This device complies with RSS 210 of Industry Canada

**EU Declaration of Conformity Europe** - This device complies with the requirements of the R&TTE Directive 1999/5/EC with essential test suites as per standards:

CE 0682 ①

EN 60950 Safety of Information Technology equipment, ETS 300 328 Technical requirements for radio equipment and ETS 300 826 General EMC requirements for radio equipment

**Electromagnetic Compatibility (EMC) USA** - This equipment generates and radiates radio frequency energy and if not installed and used in accordance with the instruction manual, may cause interference to radio communications. It has been tested and found to comply with the limits for a Class A computing device pursuant to Subpart B of Part 15 of FCC rules, which are designed to provide reasonable protection against such interference when operated in a commercial environment. Operation of this equipment in a residential area is likely to cause interference in which case the user at his own expense will be required to take whatever measures may be required to correct the interference. Shielded cables should be used with this unit to ensure compliance with the Class A limits.

**Liability** - Every care has been taken in the preparation of this manual; if you detect any inaccuracies or omissions, please inform your local Axis office, which can be found on the cover of this document. Axis Communications AB cannot be held responsible for any technical or typographical errors and reserves the right to make changes to the product and manuals without prior notice. Axis Communications AB makes no warranty of any kind with regard to the material contained within this document, including, but not limited to, the implied warranties of merchantability and fitness for a particular purpose. Axis Communications AB shall not be liable nor responsible for incidental or consequential damages in connection with the furnishing, performance or use of this material.

**Axis' Trademarks** - NetPilot, ThinWizard.

**Other Trademark Acknowledgments** - Adobe Acrobat Reader, Apple, Bluetooth, Ethernet, EtherTalk, IBM, LAN Manager, LAN Server, Macintosh, Microsoft, Novell NetWare, OS/2, OS/400, AS/400, TokenTalk, UNIX, Windows, are registered trademarks of the respective holders.

**Safety Notices** - Take some time to read through the safety notices before installing the AXIS 5800+ Mobile. Please observe all safety markings and instructions when using this product.

**Caution!** - must be observed to avoid loss of data or damage to your equipment.

**Important:** - must be observed to avoid operational impairment.

Do not proceed any of the above notices, until you have fully understood the implications.

**Support Services** - Should you require technical assistance, please contact your Axis dealer. If your questions cannot be answered immediately, your Axis dealer will forward your queries through the appropriate channels to ensure you a rapid response.

If you are connected to the Internet, you can find on-line manuals, technical support, software updates, application software, corporate information, etc. at <http://www.axis.com/techsup/>

AXIS 5800+ Quick Installation Guide

Rev 1.0

Part No: 19072

Date: March 2002

Copyright © Axis Communications AB, 2002

## Table of Contents

---

Regulatory Information . . . . .	2
Overview . . . . .	4
Connecting the Hardware . . . . .	5
Automatic IP address assignment . . . . .	6
Manual IP address assignment . . . . .	7
Setting the IP address using AXIS IP JumpStarter . . . . .	7
Setting the IP address using ARP . . . . .	8
Configuring a Printer . . . . .	9
Installing Printers in Windows 2000/XP . . . . .	9
Installing Printers in Windows 95/98/NT/Me . . . . .	10
Installing a printer in UNIX/Linux . . . . .	11
Installing a printer in Mac OS X . . . . .	12
Management and configuration . . . . .	13
Using a Standard Web Browser . . . . .	13
Using AXIS ThinWizard . . . . .	14
Wireless Printing - Technical Specifications . . . . .	15
Wireless Printing from a Laptop . . . . .	16
How to Print . . . . .	17
Wireless Printing from an Ericsson Mobile Phone . . . . .	18
Troubleshooting . . . . .	19
Resetting the Print Server . . . . .	20
Features . . . . .	21

## Overview

This guide covers Windows (95, 98, NT, Me, 2000, XP), UNIX/Linux and Macintosh over TCP/IP for cable networks and instructions for wireless printing over Bluetooth™ Wireless Technology.

For installation instructions covering NetWare, OS/2 and Windows over NetBIOS/NetBEUI and IPX/SPX, see the AXIS 5800+ User's Manual, available from the AXIS Network Product CD and the Axis web site at [www.axis.com](http://www.axis.com).

The instructions in this guide apply to AXIS 5800+ Mobile print servers with firmware version 6.30 and above.

### Note:

The instructions in this guide are based on settings found in a new and unconfigured AXIS 5800+. To establish this status in a previously configured AXIS 5800+, you can perform a factory default. See Resetting the Print Server on page 20 for instructions.

### Hardware Inventory

Unpack and check all the items using the following check list. Contact your dealer if anything is missing or damaged. All packing materials are recyclable.

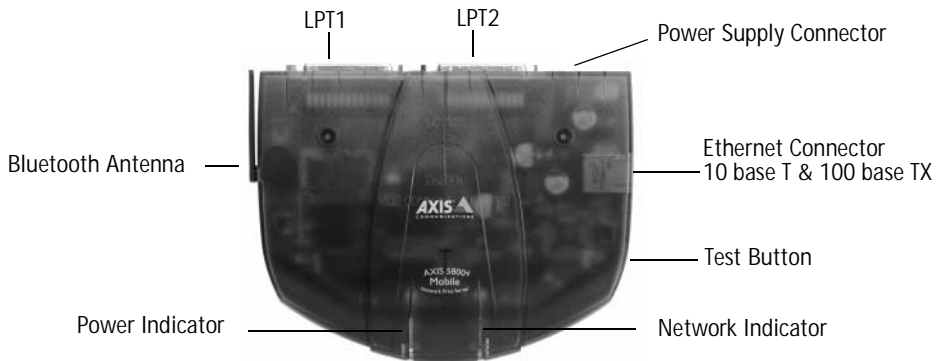
Hardware	Model	Part Number	
Print Server	AXIS 5800+ Mobile	0156-001-01	
Power Supply		PS-F	PS-H
		Country	part no.
PS-F and PS-H are interchangeable	Europe	18424	19108
	UK	18425	19109
	Australia	18428	19111
	USA / Japan	18480	19110
	Korea		19112

Media	Title	Part Number
CD	AXIS Network Product CD	19114
Printed Materials	AXIS 5800+ User's Guide	19072

Optional accessories	Description	Part Number
Cables	Parallel Printer Cable	13360
	Centronics to Mini-centronics Cable	16453
Ribbons	Self-adhesive velcro ribbons	13282 & 13283

## Connecting the Hardware

1. Make sure that the printer is switched off and that the power supply is disconnected from the AXIS 5800+ Mobile.
2. Locate the serial number, found on the underside label of the AXIS 5800+, and write it down. Example: Ser. No. 00408C1802FB
3. Connect your printer(s) to the print server's LPT1 or LPT2 port using a printer cable. Make sure the *Bluetooth* antenna is pointing upwards.
4. Connect your AXIS 5800+ to your network (Ethernet Connector), using a twisted pair category 5 cable.
5. Switch on your printer(s) and make sure it is ready for use.
6. Connect the power supply to the AXIS 5800+. The Network Indicator will start flashing when the print server is correctly connected to the network.
7. Wait 1 minute and press the test button once. A test page will be printed on the connected printer, keep it handy during the installation. The test page will show the IP address of the print server.



### AXIS Network Product CD

The AXIS Network Product CD includes AXIS Utilities Software, Product Software, White Papers, User Documentation, etc. It is compatible for use within all of the supported Axis computing environments.

### Notes:

- All documents presented on the CD are in PDF format.
- If Adobe Acrobat Reader 3.0 or higher is not installed on to your system, you can download Acrobat Reader from the AXIS Network Product CD or Adobe's web site at <http://www.adobe.com>.

## Automatic IP address assignment

If you are working in a Windows network that uses dynamic IP address assignment, your print server will obtain an IP address automatically when you connect it to the network. Follow the instructions on this page to verify the IP address:

Methods	Server Platforms			Comments
	Windows	UNIX	Mac OS X	
RARP		X	X	Downloads the IP Address to each device automatically
BOOTP		X	X	Similar to RARP, although can operate on the entire network.
DHCP	X	X	X	Automatic but temporary assignment of IP addresses.
Auto-IP	X	X	X	Automatic but temporary assignment of IP addresses.

All methods are enabled by default.

1. Open a Web browser (e.g. Internet Explorer or Netscape).
2. In the Web browser's **Location/Address** field, enter the print server's IP address (Internet address), found on the test page printed in *Connecting the Hardware* on page 5, and press **Enter**.
3. If the **Network Print Server** web page appears in your Web browser, the IP address was set automatically when you connected the AXIS 5800+ to your network. Proceed to *Configuring a Printer* on page 9.
4. If the **Network Print Server** web page does **not** appear, you need to set the print server's IP address manually using one of the methods described in *Manual IP address assignment* on page 7.

### Notes:

- Use a Web browser with JavaScript support
- The AXIS 5800+ supports WINS (Windows Internet Name Service), which is recommended when setting the IP address using DHCP in Windows environments.
- If you are working in a WINS/DDNS network, you can log in to the print server's web pages using its default host name: In the Web browser's **Location/Address** field, enter the default print server name **AXISxxxxxx** (xxxxxx are the last six digits of the serial number, found on the print server's underside label). Example: If the serial number is 00408C1802FB, type **AXIS1802FB** and press **Enter**.
- DHCP, RARP and BOOTP can be used to set the IP address in UNIX, see the *AXIS 5800+ User's Manual* for details.
- If you are working in a network that does not use dynamic IP address assignment, refer to *Manual IP address assignment* on page 7 to assign an IP address to the print server manually.
- See the *AXIS 5800+ User's Manual* for installation instructions in a NetBIOS/NetBEUI environment. The *User's Manual* is available from the *AXIS Product CD* and the *Axis web site* at [www.axis.com](http://www.axis.com)

## Manual IP address assignment

To establish communication with the TCP/IP network, an IP Address must be assigned to your AXIS 5800+. Choose an appropriate method from the table below:

Methods	Server Platforms			Comments
	Windows	UNIX	Mac OS X	
AXIS IP Jumpstarter	X			An Axis software tool that sets the IP address of each device. Refer to Configuring a Printer on page 9.
ARP	X	X	X	Requires the IP address for each new device to be downloaded individually. Cannot be used over routers. Refer to Setting the IP address using ARP on page 8

Note:

If you are using host names, you can map a unique host name to the IP address. Refer to your system manuals for instructions on how this is performed on your system.

### Setting the IP address using AXIS IP JumpStarter

Use IP JumpStarter to set the IP address. Download IP JumpStarter from the AXIS Network Product CD or the Axis web site at [www.axis.com](http://www.axis.com) and install it on your workstation.

1. Select the required server from the serial number list in the IP JumpStarter dialog window.
2. From the Server menu, select Set IP Address.
3. Click the radio button that corresponds to your choice of IP setting method.
4. Click OK to save your settings.
5. Enter the server root password (by default set to pass), and click OK.
6. The AXIS 5800+ will appear in the list with the assigned IP address.
7. To access the print server's web pages, highlight the AXIS 5800+ in the list and select Server Home Page from the Server menu.

Note:

If your print server does not appear in the serial number list, refer to the online AXIS IP JumpStarter help files or the AXIS 5800+ User's Manual which is available from the AXIS Network Product CD or the Axis web site at [www.axis.com](http://www.axis.com)

## Setting the IP address using ARP

Refer to the appropriate section below to assign an IP address to your AXIS 5800+ using ARP:

### Windows 95, 98, NT, Me, 2000, XP

Open a Command Prompt and enter the following syntax:

Syntax	Example
1. arp -s <Internet address> <Ethernet address>	arp -s 192.168.3.191 00-40-8c-10-00-86
2. ping <Internet address>	ping 192.168.3.191
3. arp -d <Internet address>	arp -d 192.168.3.191

The host will return **reply from 192.168.3.191**, or a similar message. This indicates that the address has been set and that communication is established. You are now ready to print using FTP or Reverse Telnet.

### UNIX, Mac OS X

Open a Terminal and enter the following syntax:

Syntax	Example
1. arp -s <host name> <Ethernet address> temp	arp -s psname 00:40:8c:10:00:86 temp
2. ping <host name>	ping psname

The host will return **psname is alive**, or a similar message. This indicates that the address has been set and that communication is established. You are now ready to print using FTP or Reverse Telnet.

### Notes:

- The Ethernet Address is the same as the serial number, found on the print server's underside label. Enter the Ethernet Address in the same format as in the example above.
- The ability to set the IP address with `arp` and `ping` will only be enabled the first ten minutes after re-booting the print server.
- When you execute the `ping` command for the first time, you may experience a significantly longer response time than usual.
- The `arp` command varies between different UNIX systems.
- You need root privileges on your UNIX system in order to execute the `arp` command and run *axinstall* (refer to the AXIS 5800+ User's Manual for more information).
- Some BSD type systems expect the host name and serial number in reverse order. Furthermore IBM AIX systems will require the additional argument `ether`.  
Example: `arp -s ether <host name> <Ethernet Address> temp`



## Configuring a Printer

---

Follow the instructions to make network printers ready for printing in Windows, UNIX/Linux and Macintosh. In some cases, you need to install printing software. The software is available from the AXIS Network Product CD and the Axis web site at [www.axis.com](http://www.axis.com)

Refer to the table below for the appropriate method:

Operating Systems	Methods
Windows 2000/XP	Installing Printers in Windows 2000/XP on page 9
Windows 95/98/Me/NT	Installing Printers in Windows 95/98/NT/Me on page 10
UNIX/Linux	Installing a printer in UNIX/Linux on page 11
Mac OS X	Installing a printer in Mac OS X on page 12

Before you start:

To establish communication with the TCP/IP network, you must assign an IP address to your AXIS 5800+ Mobile. Refer to Automatic IP address assignment on page 6.

### Installing Printers in Windows 2000/XP

Use the standard Windows method for adding a printer in Windows 2000/XP:

Go to Start | Settings | Printers and click the **Add Printer** icon to start the **Add Printer Wizard**. Select the appropriate radio button:

- **Local printer** - If you are connecting directly to the print server (peer-to-peer printing), select **Local Printer** and click **Next**. Click the **Create a new port** radio button and select **Standard TCP/IP Port** from the list. Follow the **Add Standard TCP/IP Port Wizard** to complete the installation (You need to know the IP address of your print server and the model of the connected printer).
- **Network printer** - If your print server has already been installed by the administrator on another computer, select **Network printer** and click **Next**. Follow the instructions in the **Add Printer Wizard** to complete the installation.

If you need additional instructions, please refer to the relevant sections in the AXIS 5800+ Mobile User's Manual which is available from the AXIS Network Product CD or the Axis web site at [www.axis.com](http://www.axis.com)

Proceed to *Management and configuration*, on page 13 for information on supported management and configuration tools.

## Installing Printers in Windows 95/98/NT/Me

**AXIS Print Monitor** is the recommended tool to use for network printing in Windows 95/98/NT/Me. It allows Axis Network Print Servers to be connected in the same simple fashion as a local printer port and once installed, it is automatically initialized upon system startup.

### Note:

For peer-to-peer printing, **AXIS Print Monitor** must be installed on all printing clients, while it is only necessary to install it on the server for client-server printing.

1. Install the **AXIS Print Monitor** software which can be downloaded from the **AXIS Network Product CD** or from the **Axis Communications** web site at <http://www.axis.com>
2. Go to **Start | Settings | Printers** and click the **Add Printer** icon to start the **Add Printer Wizard**.
3. Select **My Computer** in the first dialog and click **Next**.
4. Click **Add Port** and select **AXIS Port** from the list and click **OK**.
5. Continue to follow the instructions in the **Add Printer Wizard** to complete the installation using the **AXIS Port Monitor** online help files.

If you need additional information, refer to the **AXIS 5800+ User's Manual** which is available from the **AXIS Network Product CD** or the **Axis** web site at [www.axis.com](http://www.axis.com).

Proceed to *Management and configuration*, on page 13 for information on supported management and configuration tools.

## Installing a printer in UNIX/Linux

The *axinstall* script is an installation and management utility for Axis print servers. With this automatic installation script, the printer connected to the Axis print server will appear as though it is directly connected to the host print spooler. If you want to integrate your AXIS 5800+ Mobile into your host spooler, you can use the Axis installation script *axinstall*, or perform a manual integration.

### Download axinstall to your host:

1. Open a Terminal and log in to the AXIS 5800+ Mobile by typing:

```
ftp <host name> or ftp <IP address>
```

2. Enter **root** as the default user id and **pass** as the default Administrator password.
3. Enter the following command to download the *axinstall* script:

```
get axinstall
```

When downloading *axinstall*, make sure you use the ascii transfer mode.

4. Make the *axinstall* script executable.
5. Enter the following command to install the AXIS 5800+ Mobile using the *axinstall* script.

```
sh axinstall
```

Follow the instructions that appear when the script has started.

### Note:

```
LPRng is not supported by axinstall
```

If you need additional instructions, please refer to the relevant sections in the AXIS 5800+ Mobile User's Manual which is available from the AXIS Network Product CD or the Axis web site at [www.axis.com](http://www.axis.com)

Proceed to *Management and configuration*, on page 13 for information on supported management and configuration tools.

## Installing a printer in Mac OS X

This section describes setting up your AXIS 5800+ for printing in the Macintosh environment (Mac OS X).

Note:

For installation descriptions on older versions Mac OS, refer to the AXIS 5800+ User's Manual which is available from the AXIS Product CD or the Axis web site at <http://www.axis.com>

1. Select **Print Center** from the **Applications | Utilities** folder.
2. Click **Add Printer...**
3. From the Printer List dialog, select **LPR Printers using IP**.
4. Enter the IP address or Host name of your AXIS 5800+.
5. Select **Use Default Queue on Server** or enter LPT1 or LPT2 in the **Queue Name** field.
6. Select an appropriate printer driver for your printer or, if is not available in the list, select **Generic**. You can also browse for a printer driver on your computer or network by selecting **Other...** from the list.
7. Click **Add** to complete the installation.

If you need additional instructions, please refer to the relevant sections in the AXIS 5800+ Mobile User's Manual which is available from the AXIS Network Product CD or the Axis web site at [www.axis.com](http://www.axis.com)

Proceed to *Management and configuration*, on page 13 for information on supported management and configuration tools.

## Management and configuration

---

The following table shows the management and configuration tools that are available for the AXIS 5800+ Mobile.

Protocols	Operating Systems	Configuration/Management methods
TCP/IP	Windows 95/98/NT/Me/2000/XP UNIX, Mac OS X	Web Browser, AXIS ThinWizard, FTP, Telnet, SNMP, HP Web JetAdmin
IPX/SPX	NetWare	AXIS NetPilot, HP JetAdmin, Novell Utilities
NetBIOS/NetBEUI	Windows 95/98/NT/Me/2000/XP OS/2	AXIS NetPilot

Note:

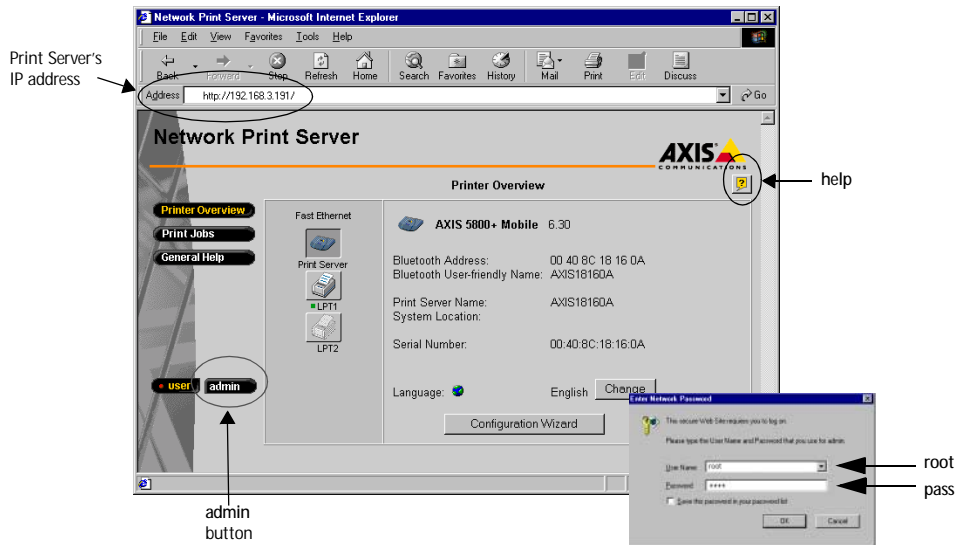
Please refer to the AXIS 5800+ Mobile User's Manual for a comprehensive description of the supported configuration and management tools.

### Using a Standard Web Browser

Axis print servers have built-in web pages that can be accessed via a standard web browser. Log in to the print server's web pages to modify the settings.

Follow the instructions below to access the web pages of your AXIS 5800+ Mobile:

1. Enter the print server's IP address (or host name) in the **Location/Address** field of your Web browser. Press **Enter**
2. The **Printer Overview** page will appear. Click the **admin** button to access the Administration Web pages. You will be prompted for a password.
3. Enter the default user name **root** and the default password **pass**. Click **OK**.



AXIS 5800+ Mobile Network Print Server - Printer Overview page

## Using AXIS ThinWizard

The AXIS ThinWizard management tool allows you to manage and upgrade multiple ThinServer products. You can find, monitor and upgrade your Axis print servers remotely in any TCP/IP network using a standard Web browser.

Install AXIS ThinWizard on a designated server in your network. The AXIS ThinWizard software is available on the AXIS Network Product CD, but can also be downloaded from the Axis web site at <http://www.axis.com/>

Follow the instructions below to use AXIS ThinWizard:

1. Start a Web browser from a client in your network.
2. Enter the IP address or the host name of the server, where you installed AXIS ThinWizard.
3. Enter the user id and the password and click the Log in button.
4. The AXIS ThinWizard interface appears. Select a network group from the list. If the list is empty, you must first create a group. In that case, just click the Network Groups button and follow the instructions.

For more information, please refer to the AXIS ThinWizard on-line help.

## Wireless Printing - Technical Specifications

---

### Windows

AXIS Wireless Printing Utility supports:

Windows 98SE, Me, NT4 (service pack 6), 2000 (service pack 2), XP

See AXIS Wireless Printing Utility on page 16 for more information.

### Other Platforms

The AXIS 5800+ Mobile supports all clients supporting any of the *Bluetooth* printing profiles (HCRP, OPP, SPP, APP) listed below.

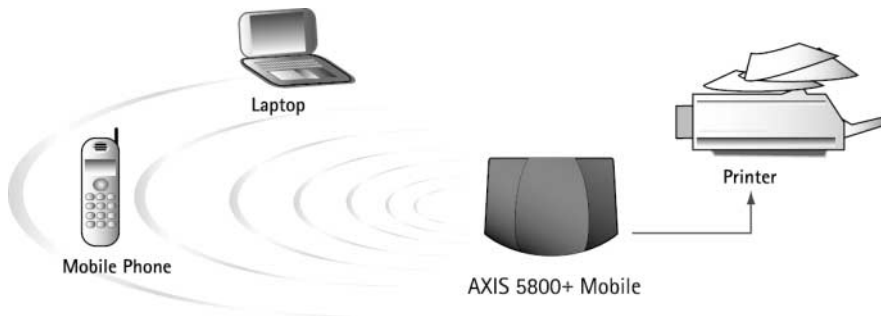
### Bluetooth

The AXIS 5800+ Mobile complies with *Bluetooth* version 1.1

### Bluetooth Profiles

The following implementations of *Bluetooth* user models are supported:

- HCRP - Hard Copy Cable Replacement Profile
- OPP - Object Push Profile
- SPP - Serial Port Profile
- APP - AXIS Print Profile (Axis proprietary)



Information is transmitted using the global *Bluetooth* 2.4 GHz ISM band

### Note:

This section describes the requirements for wireless printing from a laptop or mobile phone. Printing from HCRP, SPP or OPP *Bluetooth* 1.1 compliant clients is possible but is not described here. Refer to the user documentation of your client for information.

## Wireless Printing from a Laptop

---

### System requirements

- Windows 98SE, Me, NT SP6, 2000 SP2 or XP



### Hardware requirements

- Toshiba laptop with integrated *Bluetooth* support -or -  
Laptop with *Bluetooth* support and client software supporting the HCRP profile - or -  
Laptop with a *Bluetooth* PC Card (Motorola, Toshiba, IBM, Dell or NEC) Please refer to the *Bluetooth* PC Card manual for installation and usage instructions.

### Software requirements

- *Bluetooth* drivers from Toshiba version 1.02.09 or later - or -  
*Bluetooth* Software Suite version 1.09 or later
- **AXIS Wireless Printing Utility** version 1.20 or later  
All Axis software and upgrades are available free of charge from the AXIS Product CD or from the Axis web site at [www.axis.com](http://www.axis.com)

### Note:

As the AXIS 5800+ Mobile supports SPP (Serial Port Profile), you can also send a print job using any standard SPP client.

### AXIS Wireless Printing Utility

AXIS Wireless Printing Utility is a software tool for locating and printing to Axis wireless print servers.

1. Download AXIS Wireless Printing Utility from the AXIS Network Product CD or from the Axis web site at [www.axis.com](http://www.axis.com)
2. Install AXIS Wireless Printing Utility on your laptop.

A default printer object, **Axis Wireless Printer**, will be automatically installed on your laptop with a standard PCL 3 driver that is supported by most Laser-type printers.

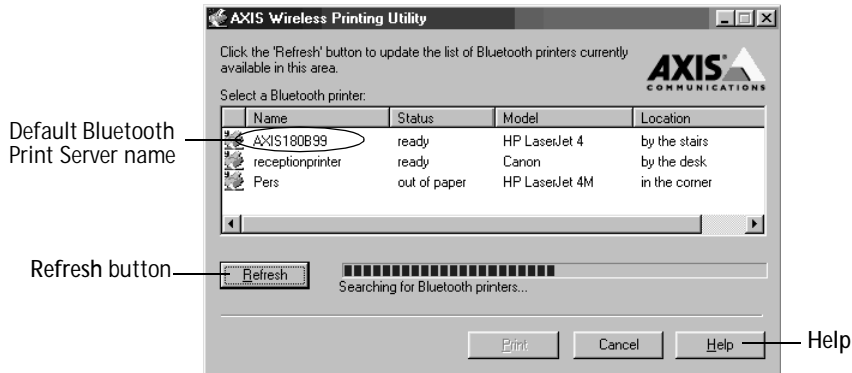
### Note:

If you have a printer that does not support PCL 3, you need to add a printer using the standard Add Printer Wizard and connect the printer to the **Axis Wireless Port**. (See the AXIS Wireless Printing Utility help file for more information)



## How to Print

1. From any Windows application (e.g. Word), select **File | Print**.
2. Select **AXIS Wireless Printer** and click **OK**.
3. AXIS Wireless Printing Utility will automatically start searching for wireless print servers. The very first time AXIS Wireless Printing Utility is used, it will search for *Bluetooth* printers and display the units that were detected in the area. These printers will then be saved and show up the next time you want to print.
4. To perform a new search (for instance in a new environment) click the **Refresh** button in the AXIS Wireless Printing Utility main window.
5. Select a printer from the list and click **Print**.



The AXIS Wireless Printing Utility main window

### Notes:

- You can always print to a selected printer during an on-going search.
- If you perform a search while a specific printer is busy printing a print job, that specific printer will not show up in the list.
- In AXIS Wireless Printing Utility, the AXIS 5800+ default name will be AXISXXXXXX (xxxxxx are the last six digits of the print server's serial number, found on its underside label).
- If Axis Wireless Printer doesn't show up in the Printer list, you need to create it. See the [AXIS Wireless Printing Utility Help](#) (from Start | Programs) for instructions.
- The print server's Administrator can assign new names to the items displayed under "Name" by logging into the print server: `admin | This Print Server | General | Print Server Name`.

### Note:

As the AXIS 5800+ Mobile supports SPP (Serial Port Profile), you can also send a print job using any standard SPP client.

## Wireless Printing from an Ericsson Mobile Phone

---

### Hardware requirements

- Ericsson mobile phone equipped with *Bluetooth*<sup>™</sup> Wireless Technology e.g. Ericsson R520, Ericsson T68, Ericsson T39



### Printer Port

- Use the print server's LPT1 port on a PCL4 printer for wireless printing from a mobile phone

### Printing

- Refer to the user documentation of your mobile phone for information on how to send print jobs wirelessly

### Note:

This section describes the requirements for wireless printing from a laptop or mobile phone. Printing from HCRP, SPP or OPP *Bluetooth* 1.1 compliant clients is possible but is not described here. Refer to the user documentation of your client for information.

## Troubleshooting

---

Check the following if you experience problems when trying to print:

- Make sure the *Bluetooth* antenna of the AXIS 5800+ Mobile print server is pointing upwards for best performance.
- *Bluetooth* Wireless Technology must be enabled on your print server - this function is enabled by default. To enable/disable - browse to the internal web pages of your AXIS 5800+ Mobile print server. Click **admin** | **Network settings** | **Detailed view** | **Bluetooth**. Make sure the *Bluetooth* Enabled "Yes" radio-button is selected.
- When printing from a mobile phone, make sure you are printing to a PCL4 printer. Refer to your printer manufacturer to check that you are using a PCL4 printer.
- When printing from a mobile phone, make sure that the printer is connected to the AXIS 5800+ Mobile LPT1 port. Refer to Connecting the Hardware on page 5 for information on the location of the LPT1 port on the print server.
- Make sure that the *Bluetooth* devices are located within 10 meters (approx. 30 feet) from each other, closer if there are solid objects in between.
- Make sure that your printer is connected to the correct printer port of the AXIS 5800+ Mobile. Go to **admin** | **Network settings** | **Detailed view** | **Bluetooth** and make sure the physical port you have chosen to print from is selected: LPT1 or LPT2 for printing from a laptop and LPT1 for printing from a mobile phone.

## Resetting the Print Server

---

Follow the instructions below to reset the AXIS 5800+ parameters to the default values (Factory Default):

Important:

A Factory Default will reset the internal settings of the print server to default and should be performed with caution. All parameters except Node Address (NODE\_ADDR), Internet Address (IP\_ADDR) and DHCP enabled or disabled (DHCP\_ENABLE.) are reset.

1. Remove the external power supply to switch off the AXIS 5800+.
2. Press and hold down the test button, while you plug the external power supply back in. Continue to hold down the test button, until the network indicator begins to flash at one second intervals. This should take at least 5 seconds.
3. Release the test button and wait until the network indicator flashes at least five times.
4. Press and hold the test button again until the network indicator remains constantly lit.
5. Restart the AXIS 5800+ by disconnecting and reconnecting the external power supply. The print server is now reset to the factory default settings.

## Features

---

The AXIS 5800+ has built-in firmware, which comprises the following new features in version 6.30:

- **Auto IP-Functionality** - the Print Server will receive a temporary IP address automatically. This method enables the host to automatically take a link-local IPv4 address in the absence of an IP address management mechanism such as DHCP. AutoIP is supported by Windows 98, Me, 2000, XP and Mac OS version 8.5 or higher
- **E-mail Notification** - the Print Server automatically notifies administrators by e-mail when the printer needs assistance (e.g. toner or paper refill)
- **NetWare Packet Signature** (NetWare Packet Signature, Level 3 = best possible) - improved security feature that makes it possible to encrypt printed material with high-security requirements, such as medical records and legal documents. This new feature enables sending confidential information across the network without the risk of interception.
- **Safe flash loading** - the AXIS 5800+ Mobile is equipped with 8 MB RAM, thus allowing a new version of firmware to be downloaded and stored in the memory before the old firmware version is deleted.
- **Flash Loading from the Web** - now even easier to upgrade, as you can do it directly over the web without client software.
- **Manual Network Speed Selection** - allows you to select network speed manually (10/100)
- **Multi-Language Support** - available in English, Spanish, French and German.
- **Automatic Printer-type Selection in AppleTalk** - the print server automatically selects binary protocol and printer type.
- All Axis print server firmware upgrades are obtainable from the Axis Communications web site. You can also download this firmware by logging in to the print server's **admin** web pages.

