



## **TECHNICAL NOTES**

---

**NETWORK CD/DVD SERVERS**

**AXIS STORPOINT CD E100**

# **CD Grouping**

**Created: January 3, 2001**  
**Last updated: January 3, 2001**  
**Rev: 1.0**

## TABLE OF CONTENTS

<b><u>INTRODUCTION</u></b>		<b><u>2</u></b>
<b><u>1</u></b>	<b><u>REQUIREMENTS</u></b>	<b><u>2</u></b>
<b><u>2</u></b>	<b><u>PURPOSE</u></b>	<b><u>3</u></b>
<b><u>3</u></b>	<b><u>MANAGING CD GROUPING</u></b>	<b><u>4</u></b>
<b>3.1</b>	<b>CREATING A GROUP FOLDER</b>	<b>4</b>
<b>3.2</b>	<b>DEFINING SHARES AND ACCESS RIGHTS</b>	<b>5</b>
<b>3.3</b>	<b>DELETING A GROUP FOLDER</b>	<b>6</b>

## Introduction

AXIS StorPoint CD E100 Release 5.32 includes support for *CD grouping*. This means that the administrator can create folders for organizing the networked discs into a hierarchy of folders.

**Note:** The Basic versions of AXIS StorPoint CD E100 do not support CD grouping.

## 1 Requirements

Group folders can be created and manipulated within the following network environments:

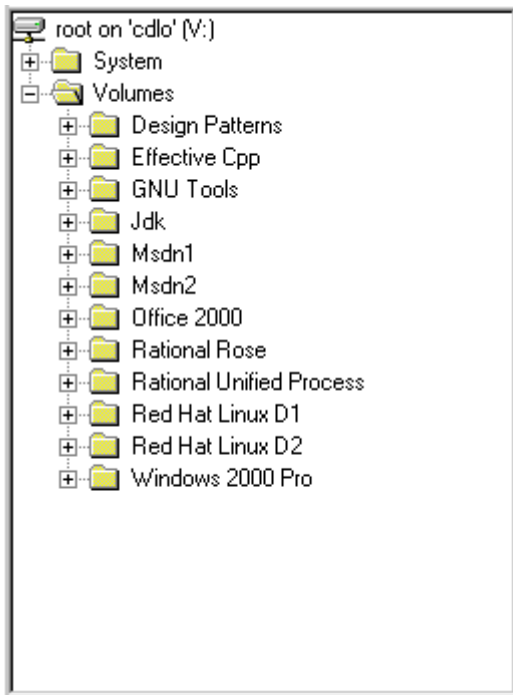
- Microsoft and IBM (SMB)
- Novell NetWare

In Web (HTTP), UNIX and Macintosh (AFP) environments, group folders will be visible but it will not be possible to manage them using these protocols.

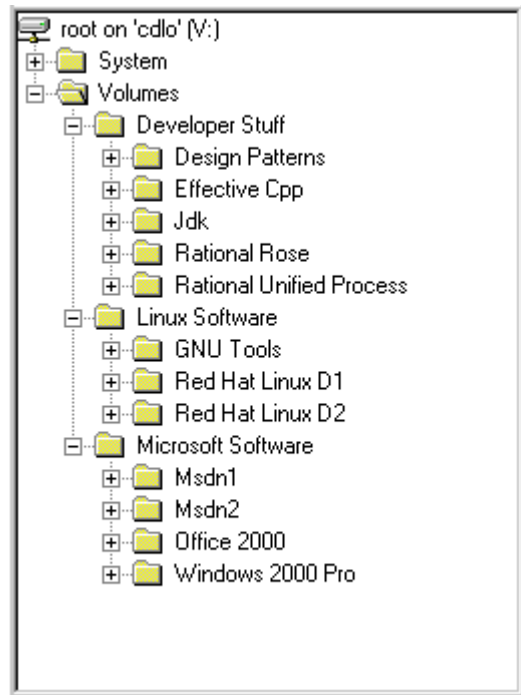
## 2 Purpose

CD grouping is useful when an organization has a large collection of discs. It is easier to find and access a disc when it is placed in a folder with a name that relates to its content.

By default, all discs are listed directly under the **Volumes** folder, see Fig 1a. In Fig 1b, the administrator has organized the discs into three different folders using CD grouping.



**Fig 1a. No group folders**



**Fig 1b. Three group folders**

**Note:** Up to 100 group folders can be used.

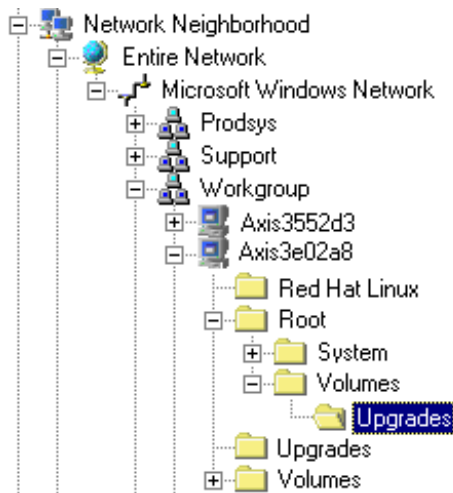
## 3 Managing CD Grouping

### 3.1 Creating a Group Folder

You use Windows Explorer to organize the networked discs into folders.

Follow these steps:

1. Locate the AXIS StorPoint CD E100 server within Windows Explorer. The default name is **Axis<nnnnnn>** where <nnnnnn> are the last six digits of the serial number.
2. Open the **root** folder. If using share-level security, enter the Server password. The default password is *pass*.
3. Open the **Volumes** folder.
4. From the **FILE** menu, select **NEW | FOLDER** and rename the group folder.
5. Move the desired discs into the new folder using the **cut-and-paste** function.



#### **Important!**

Using **copy-and-paste** when moving discs into a group folder will **not** work properly. Use **cut-and-paste** instead.

### 3.2 Defining Shares and Access Rights

**Important!**

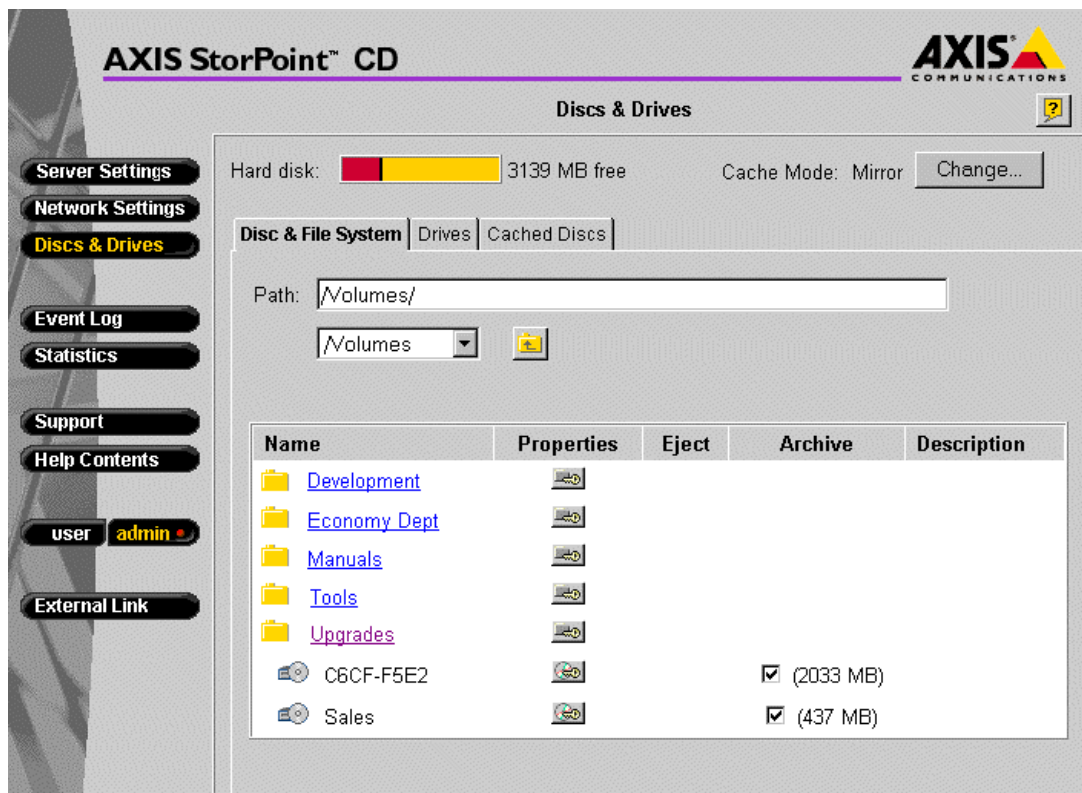
When moving a disc from the **Volumes** folder to a new group folder, shares and access rights defined for the disc will be removed. By default, new group folders are not shared.

You manage the access rights of the group folders via the StorPoint CD Web interface. Follow these steps:

1. Start a Web browser and enter the IP address or name of the AXIS StorPoint CD E100 server within the location/address field.
2. Click **ADMIN** to access the Administration pages. The default password is *pass*.
3. Open the **DISCS & DRIVE** page. The group folders created with Windows Explorer will appear in the **DISCS & FILE SYSTEM** view.
4. Click the appropriate **PROPERTIES** icon to define shares and access rights for the group folders in Windows share-level, Web (HTTP), UNIX and Macintosh (AFP).

**Notes:**

- For Windows user-level, use Windows Explorer to set access rights.
- For NetWare, use NWAdmin to set access rights.



To display the contents of a folder, simply click the name of the folder.

### 3.3 Deleting a Group Folder

You use Windows Explorer to delete a group folder. Move all the discs to the **Volumes** folder before deleting a group folder. The folder must be empty before it can be deleted.

**Important!**

Make sure that no un-finalized CD-R or CD-RW discs are accidentally left in the group folder. The data on these discs will be lost when trying to delete the group folder.