

# **Integration Guide AXIS Camera Station and AXIS C3003-E**

**Created: May 12, 2015**

**Last updated: June 08, 2015**

**Rev: 1.2**

- 
- 1** Please note that AXIS does not take any responsibility for how this configuration may affect your system. If the modification fails or if you get other unexpected results, you may have to restore the factory default settings as described in the User's manual.

## Introduction

The following document highlights how to add a door station to Axis Camera Station and then complete further configurations that can be made to meet an operator’s need:

The document explains how to:

- Add a horn speaker to Axis Camera Station.
- Associate a horn speaker to a camera.
- Create a button to play messages from within the horn speakers.

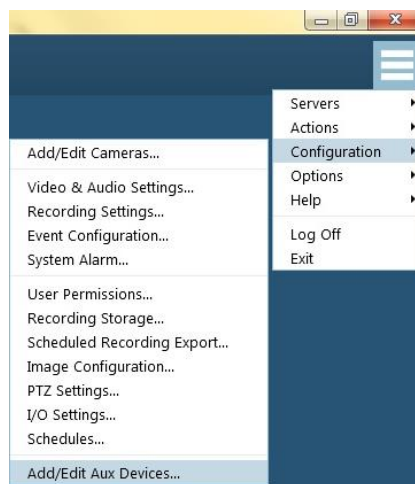
This following configuration has been tested with the following products and firmware:

AXIS C3003-E, firmware 1.15.0 and Axis Camera Station 4.2.

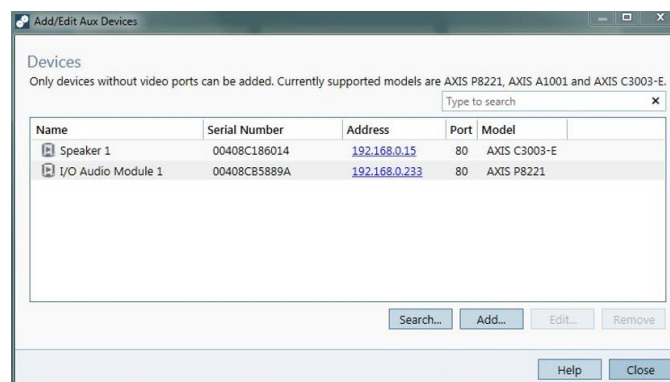
### Step 1 – Adding a horn speaker

To add a horn speaker you must add an auxiliary device:

- 1) Select the configuration tab (top right corner)
- 2) Select “Configuration” / “Add/Edit Aux Devices...”



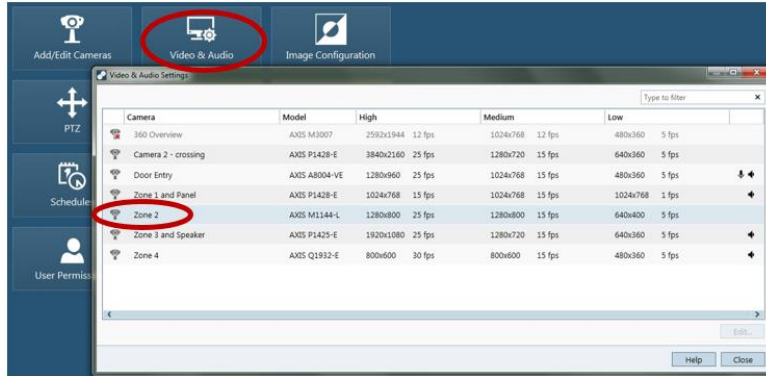
- 3) Select the horn speaker when it is found by the search to add the device to the system.



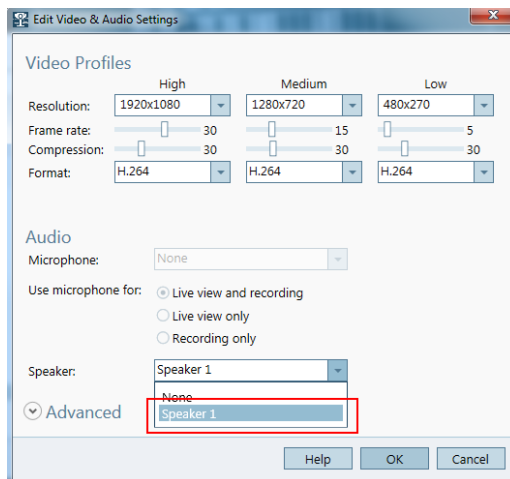
## Step 2 – Associate a horn speaker with a camera

To associate a horn speaker with a camera:

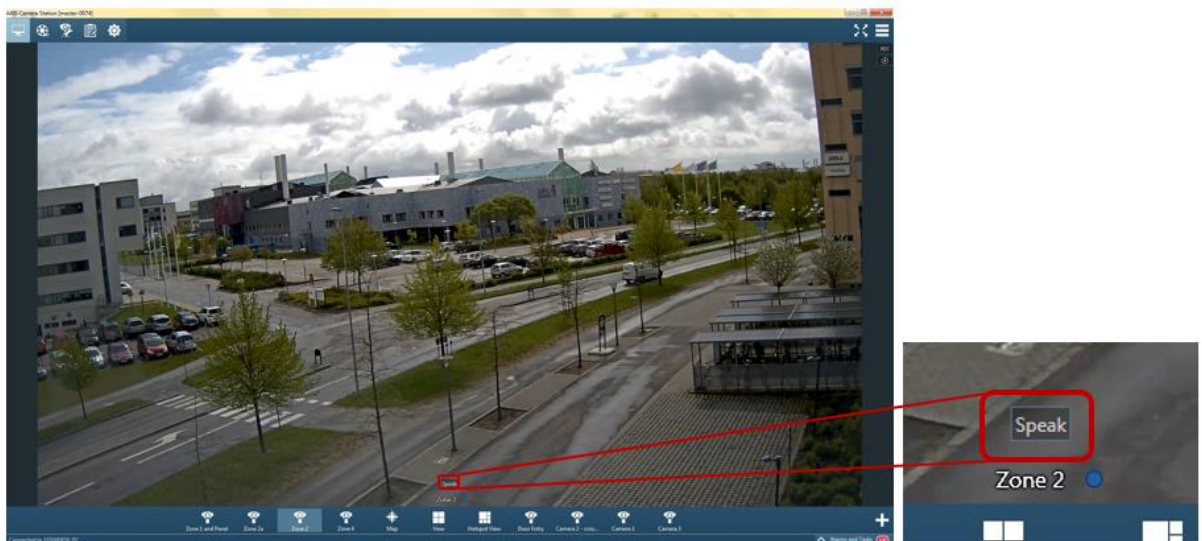
- 1) Select the “Video & Audio” configuration setting and Select the camera the horn speaker is to be associated with.



- 2) Within the “Edit Video & Audio Settings” tab you can select the horn speaker to be associated with the camera.



- 3) Return to the live view window and you will now have a “Speak” button when the mouse is placed on the video pane.



*Notes:*

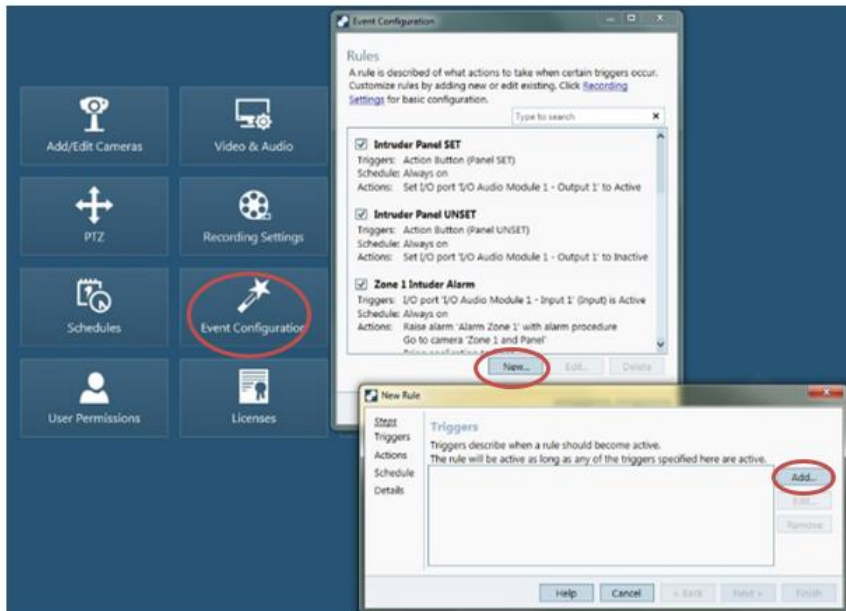
The following describes some of the current limitations:

- Audio sent from AXIS Camera Station to a horn speaker cannot be recorded.
- The C3003-E microphone is not available as audio source in AXIS Camera Station.
- No speaker support for live view maps.
- Only one speaker per camera.
- No volume control for computer microphone in AXIS Camera Station client.

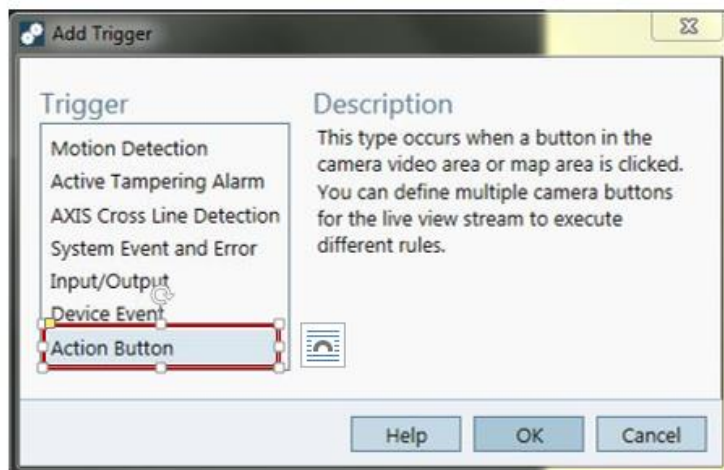
*Step 3 – Triggering a message stored within the speaker*

To configure a button to trigger a message stored in the speaker:

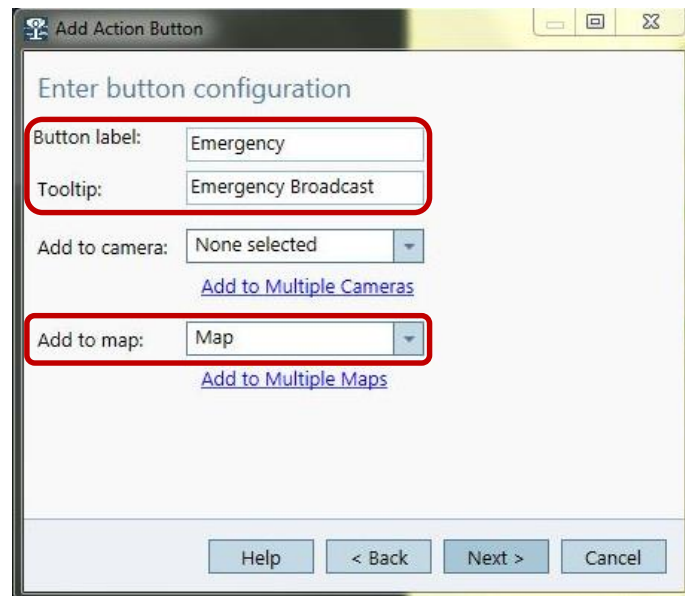
- 1) Select “Configuration”/ “Event Configuration”. Select “New” and then select “Add”.



Within the “Add Trigger” menu select “Action Button”. Then select “Create new button” and select “Command button” when the options are presented.



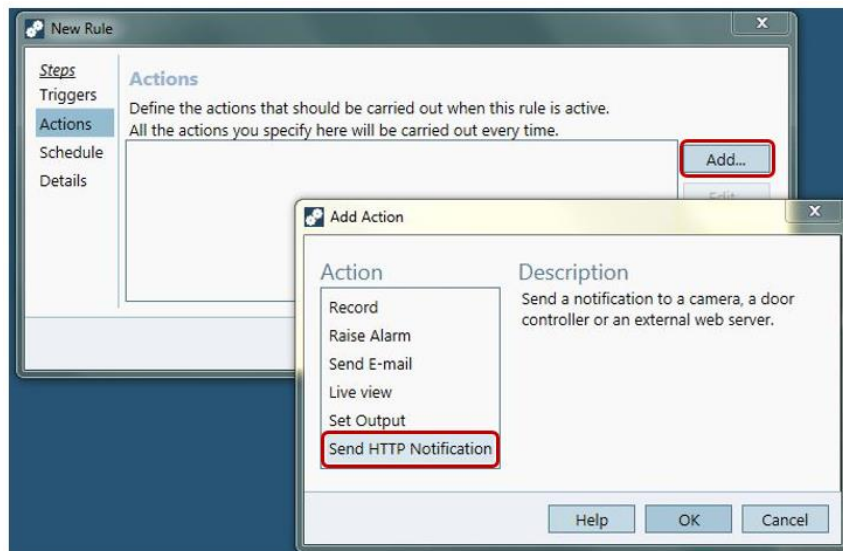
The next step is to enter the button details. The example below shows will create a button that will be labelled “Emergency” and will be added to the map called “Map”.



Note: The button can also be associated with multiple maps or cameras.

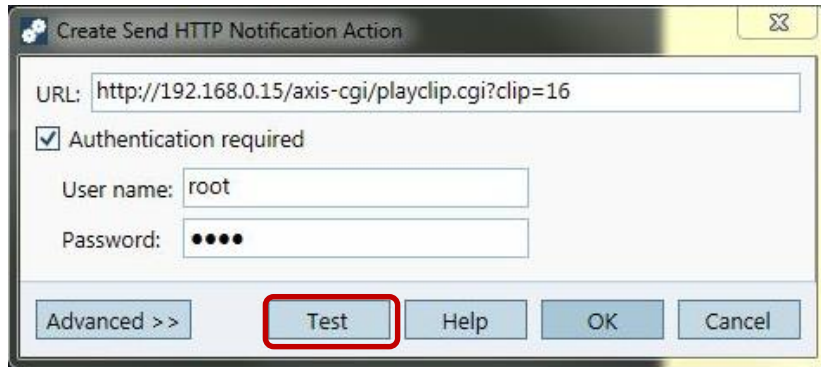
The next step is to add the actions to the button. Press Next.

- 2) Press “Add...”Select “Send HTTP Notification” as the action.



You then have to add the following VAPIX command in the URL bar:

**http://<IP Address of the C3003-E>/axis-cgi/playclip.cgi?clip=<Message ID>**



The example above shows that “clip 16” will be triggered on the C3003-E speaker with the IP address of 192.168.0.15.

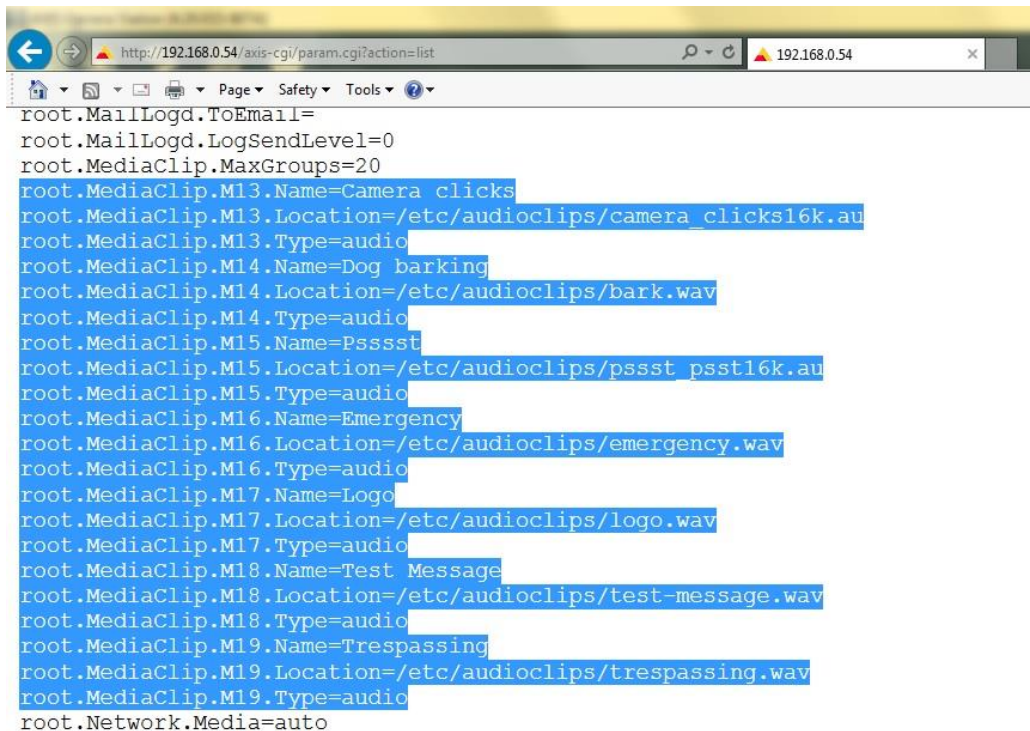
You must enter the user name and password of the C3003-E if authentication is required and then you can test the action. When the Test button is pressed the desired speaker should play the selected clip. If the connection fails or the clip does not play check the URL and the message number is correct.

Please refer to the user manual of the C3003-E documentation for guides to adding new clips.

- 3) To check the message ID (clip number) of the clips stored in the C3003-E type the following into a browser.

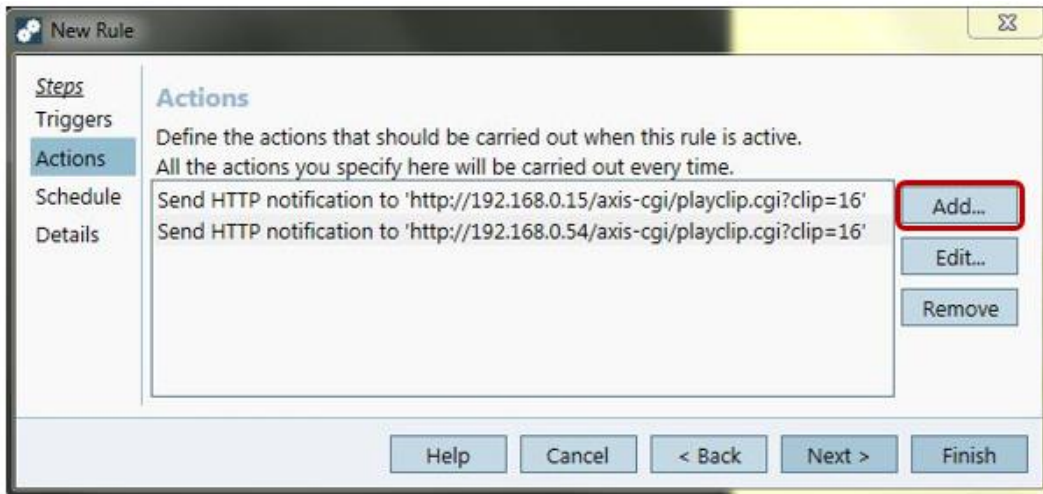
**http://<IP Address of the C3003-E>/axis-cgi/param.cgi?action=list**

You will then see a view of the device parameters:



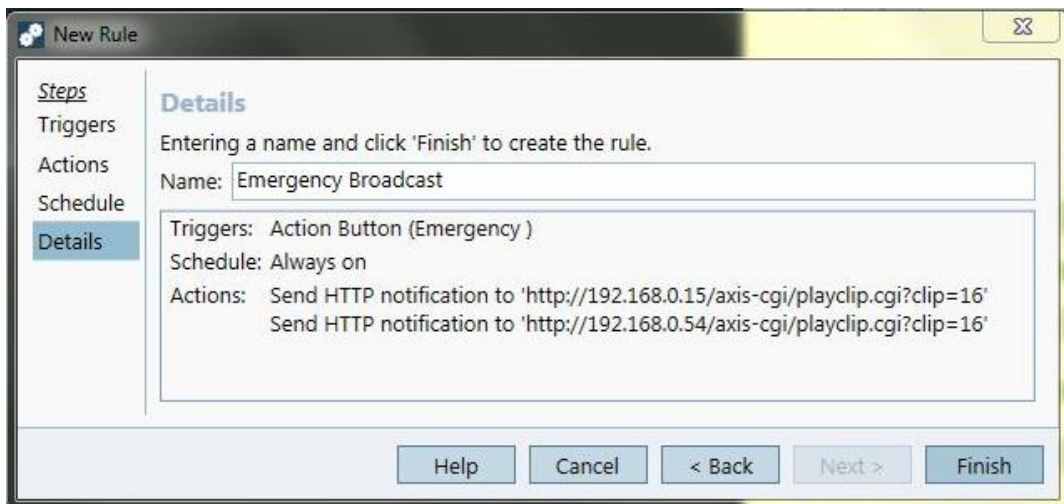
The above example shows that Clip 13 is “Camera clicks”, Clip 14 is “Dog barking” etc. The example used earlier in this document was clip 16 which is “Emergency”.

- 4) To create a broadcast rule that will trigger the same message in multiple C3003-E speakers when the button is pressed simply add another by press the “Add...” button and follow the same steps.



The example above shows two speakers will play the same message when the action button is pressed. Note that different messages could be triggered in different speakers if required.

- 5) Once all of the speakers have been added press next. A “Schedule” can be configured if needed.
- 6) Name the Rule “Emergency” or similar and press finish.



In the above example a button will have been created on the map page and when it is pressed the same message will be broadcast to two speakers.

**Notes:**

This system approach is suitable for non-life critical systems (e.g. intruder alarm, staff and customer address etc). Specific guidelines and standards (local to the installation) will have to be met for implementation in critical systems (e.g. fire evacuation).