



HOW TO

Integration Guide AXIS Camera Station and 2N IP Intercom

Created: October 16, 2017

Last updated: October 16, 2017

Rev: 1.0

-
- 1 Please note that AXIS does not take any responsibility for how this configuration may affect your system. If the modification fails or if you get other unexpected results, you may have to restore the factory default settings as described in the User's manual.

Introduction

The following document highlights how to use a 2N IP intercom in Axis Camera Station. Please note:

- *The product should have been verified to be compatible with AXIS Camera Station using AXIS Camera Station Device Compatibility Tool. One of the prerequisites is the 2N IP intercom must be ONVIF Profile S conformant.*
- *In order to enable ONVIF functionalities on an ONVIF Profile S conformant 2N product, a dedicated “HD Video License” is required.*

The document explains how to:

- *Add a 2N IP intercom to Axis Camera Station and get video & audio*
- *Send an ONVIF event notification from a 2N IP intercom*
- *Configure event rules in AXIS Camera Station to receive ONVIF event notification*

The instructions have been tested with the following products and firmware: 2N Helios IP Verso (firmware 2.20.0.29.5) and Axis Camera Station 5.13.028.

Step 1 Configurations before the device can be used in AXIS Camera Station

A series of configurations need to be done on a fresh new 2N IP intercom before it can be used in AXIS Camera Station. Please follow instructions in interoperability manual for each individual product model provided by 2N. In the case of 2N Helios IP product, the instructions can be found in the Interoperability Manual for 2N Helios IP under section “Requirements for 2N Helios IP”:

<https://wiki.2n.cz/hip/inte/1.8/en/8-vms/axis-camera-station>

Step 2 Add the device to AXIS Camera Station

If the device passes “WS-Discovery” test with AXIS Camera Station Device Compatibility Tool, it should be discovered automatically by AXIS Camera

Station the same way as any other supported device. If “WS-Discovery” test fails, it should be possible to add the device manually by entering its IP address.

Step 3 Video & Audio

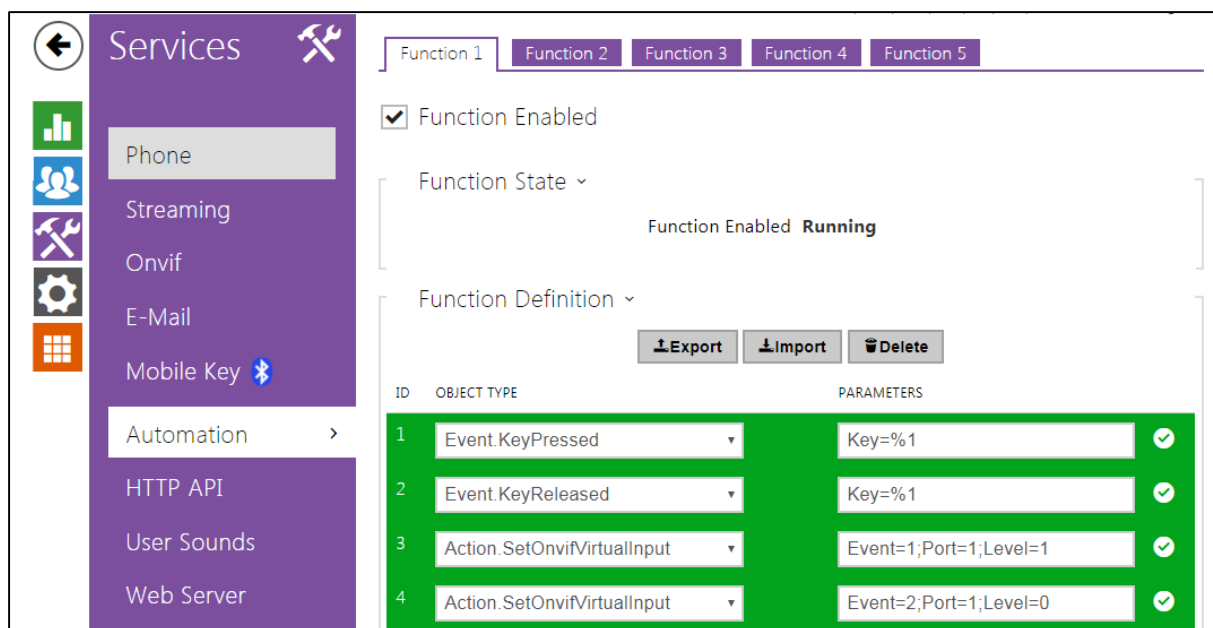
In AXIS Camera Station, go to Configuration workspace > Devices > Streaming profiles > Select the 2N device. One ONVIF video stream profile is available and can be modified the same way as other Axis devices. Audio is not enabled by default but can be easily enabled by specifying “Built-in microphone or line in” as microphone. See screenshot below:

Video profiles		Audio	
Resolution:	Medium 640x480	Microphone:	Built-in microphone or line in
Format:	H.264	Speaker:	None
Encoder:	VIDEO_ENCODER_CI	Use microphone for:	<input checked="" type="radio"/> Live view and recording
Frame rate:	15		<input type="radio"/> Live view only
Compression:	30		<input type="radio"/> Recording only
		Apply	

Step 4 Send ONVIF digital input event notification from the device

In this example, an ONVIF input event notification is triggered when the quick dial button on Helios IP Verso is pressed.

This requires the following configurations be done on the device. Go to the device’s web interface > Services > Automation > Enter function definition as shown in the screenshot below:



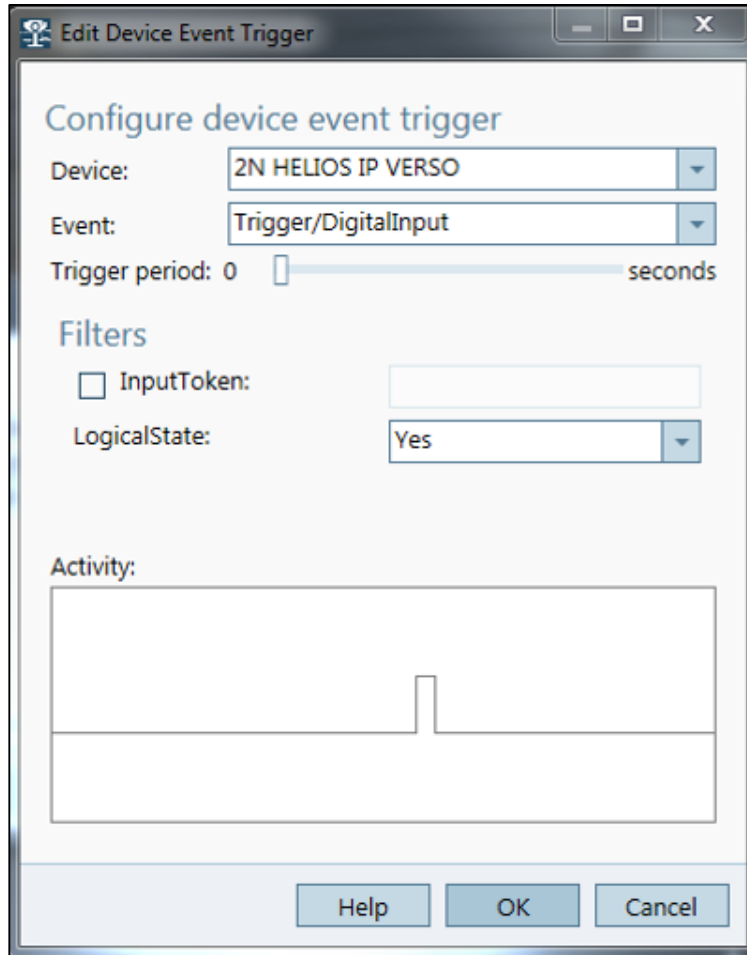
The function definition means the status of digital input "onvif_port_01" will be changed if the quick dial button (key %1) is pressed/released. More information about events and actions available on Helios IP Verso can be found in its Automation Manual below:

- <https://wiki.2n.cz/hip/auto/latest/en/3-udalosti-events>(Section KeyPressed and KeyReleased)
- <https://wiki.2n.cz/hip/auto/latest/en/4-akce-action>(Section SetOnvifVirtualInput)

Step 5 Event rule configuration in AXIS Camera Station

In this example, an event rule is created in AXIS Camera Station so that an audio alarm will be triggered, the live view will switch to Helios IP Verso and a recording will be started when the ONVIF digital input event notification is received.

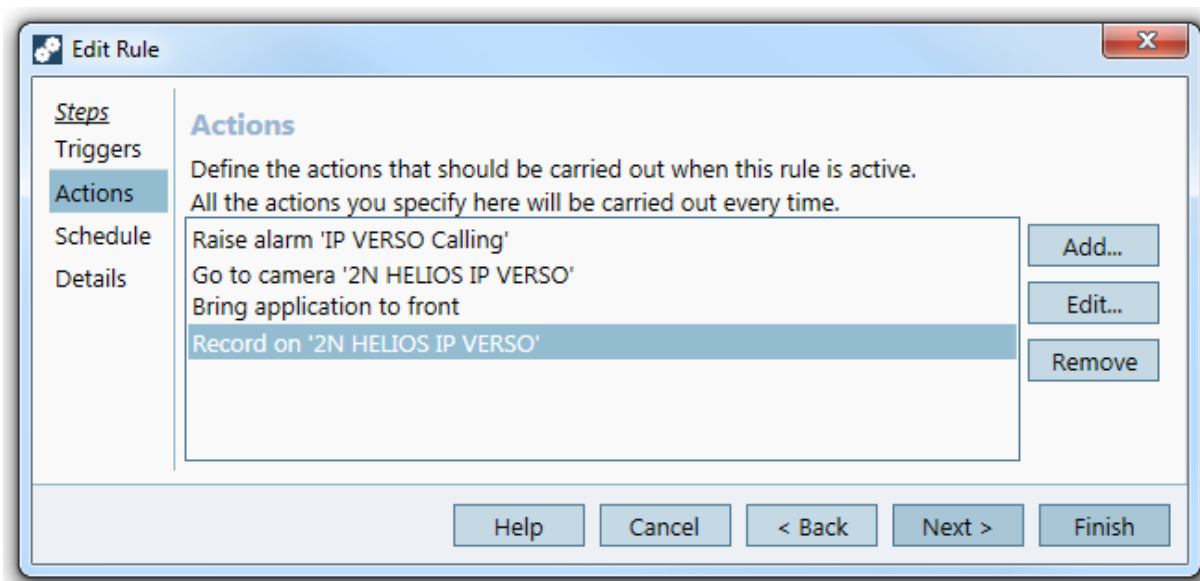
In Axis Camera Station, go to Configuration workspace > Recording and events > Action rules > New > Add > Device Event > Choose event “Trigger/DigitalInput” in Event field > Choose “Yes” in LogicalState field as shown in the screenshot below.



Test by pressing the quick dial button on Helios IP Verso. If everything is configured correctly, the activity window in the same dialog should show a pulse in the step function.

Continue to specify the following actions one by one as shown in the screenshot below.

- Record
- Raise Alarm
- Live view > On trigger go to Camera “2N HELIOS IP VERSO”



To make the alarm audible, go to Client > Customize > Sound on alarm > Choose “Beep” or specify a sound file to play when the alarm is raised.



Step 6 Add a button to open a door connected to the device

It’s also possible to create a button on the device’s live view and open a door connected to the device by sending a HTTP notification to the device. Detailed instructions can be found in the Interoperability Manual for 2N Helios IP under section “Switch Control” (Note: Some screenshots on the page are outdated due to software update):

<https://wiki.2n.cz/hip/inte/1.8/en/8-vms/axis-camera-station>