

AXIS Q6000-E Mk II

Guidelines on how to use AXIS Q6000-E Mk II Revit family

Table of Contents

INTRODUCTION	3
1.1 Insert the family	3
1.2 Combine AXIS Q6000-E Mk II with any of the AXIS Q60-E series	4

Introduction

The aim of this document is to guide the use of the AXIS Q6000-E Mk II Revit family, since the product can be combined with any of the AXIS Q60-E PTZ dome cameras.

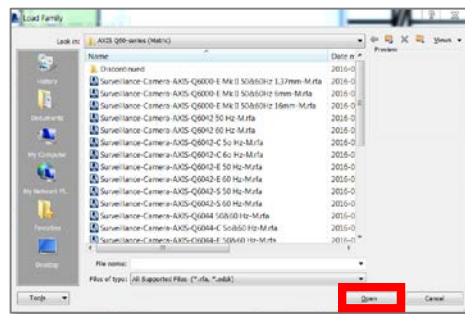
We've created the examples in this document with the standard sample from Autodesk Revit 2014. It might look slightly different in other versions of Revit.

1.1 Insert the family

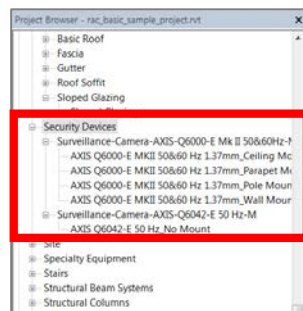
1. Open your Project in Revit.
2. Click "Load Family" from the Ribbon under "Insert".



3. Select the folder where AXIS Q6000-E Mk II is placed.
4. Select the model with the desired lens, then open.



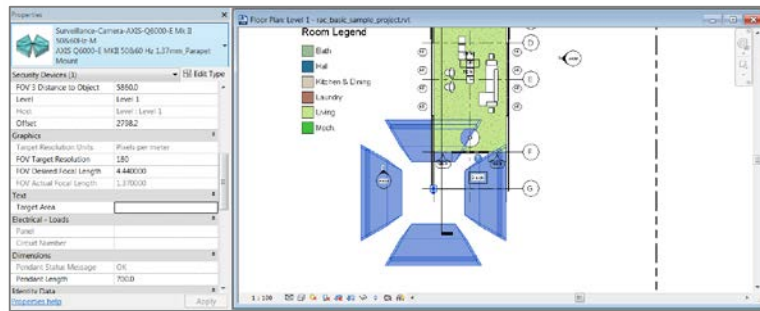
5. Repeat steps 2-4 to load the selected PTZ dome camera from the Q60-E series.
6. The families shows up in your "Project Browser" under "Security Devices".



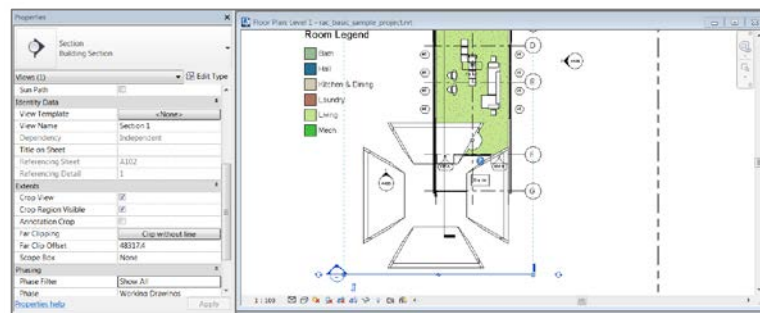
1.2 Combine AXIS Q6000-E Mk II with any of the AXIS Q60-E PTZ dome cameras

Note! The AXIS Q6000-E Mk II is compatible only with the outdoor (-E) variants of the AXIS Q60 Series.

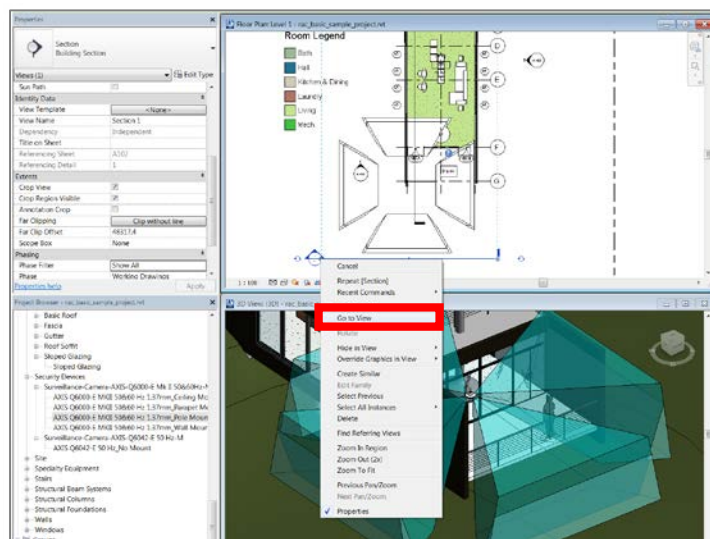
1. Drag and drop the AXIS Q6000-E Mk II family with the required mount into your selected level.



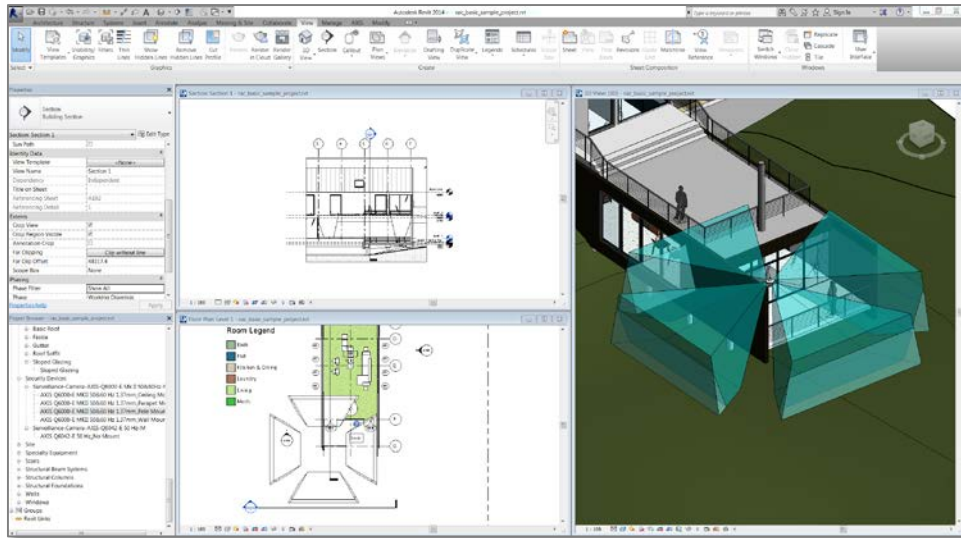
2. Create a Section.



3. Select Go to view.

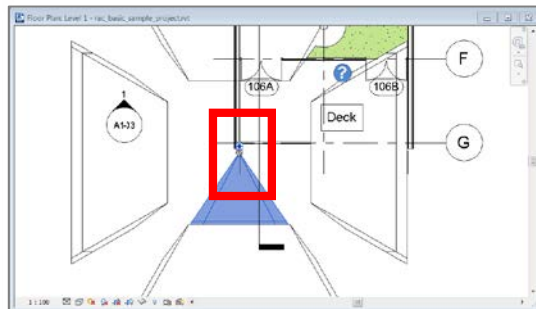


- A new window will appear with the section made.



Recommendation: Press “Tile” in the Ribbon under “View” to help you rearrange the open windows in your project.

- Drag and drop the selected AXIS Q60-E PTZ dome camera family. In this case we used AXIS Q6042-E 50 Hz, and place it in your plan view above AXIS Q6000-E Mk II.



- Use the section view, the 3D view, and the plan view to move your AXIS Q60-E camera until it is correctly placed on the AXIS Q6000-E Mk II camera.

