

AXIS Scan Server and ZyImage

Introduction

ZyImage is a program that enables OCR (Optical Character Recognition) on TIFF-files. The words are automatically stored in correct order. OCR creates an index in which keywords can be sought. If a keyword is found, documents containing the word will be displayed. By double clicking on a document, the TIFF-image will be displayed with highlighted keywords. This is what **ZyLab** calls WYHIWYG (What You Had Is What You Get).

ZyImage 98 consists of three programs:

1. **ZyScan** is used for OCR on TIFF-files. The TIFF-files can be scanned from paper within ZyScan or imported from the hard drive.
2. **ZyIndex** is used for creating an index (or updating an already existing index).
3. **ZyFind** can locate indexed documents containing a certain word.

This document describes how to use your AXIS Scan Server together with **ZyImage** from **ZyLabs** (<http://www.zylab.com>). The document contains the following information:

- Setting up the AXIS Scan Server for use with **ZyImage**
- Setting up **ZyImage** for use with AXIS Scan Server
- Using **ZyImage** with AXIS Scan Server

Any comments or suggestions regarding this document can be sent to products@axis.com

Axis Communications AB (www.axis.com)

August 13th, 1999

Table of Contents

Introduction.....	1
Required Environment	3
Setting up your AXIS Scan Server for Scan-to-File	3
Setting up Zylmage.....	4
Using Zylmage with AXIS Scan Server	5

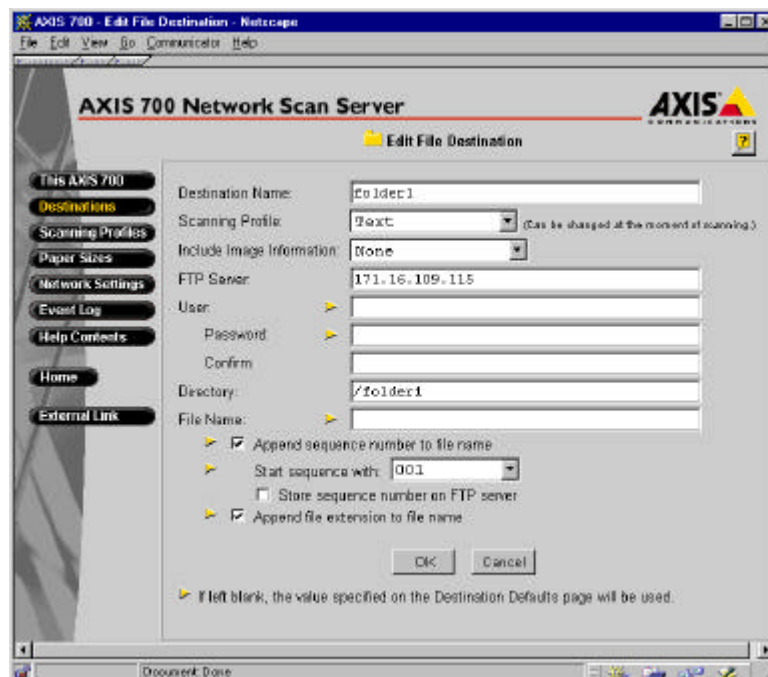
Required Environment

- Axis Scan Server
- PC running Windows 95/98/NT (preferably NT)
- An FTP server for scan-to-file, in which directories can be reached as a local or shared drive. The directories used as targets must be available for reading and writing.
- ZyImage 98

Setting up your AXIS Scan Server for Scan-to-File

The method used is scan-to-file.

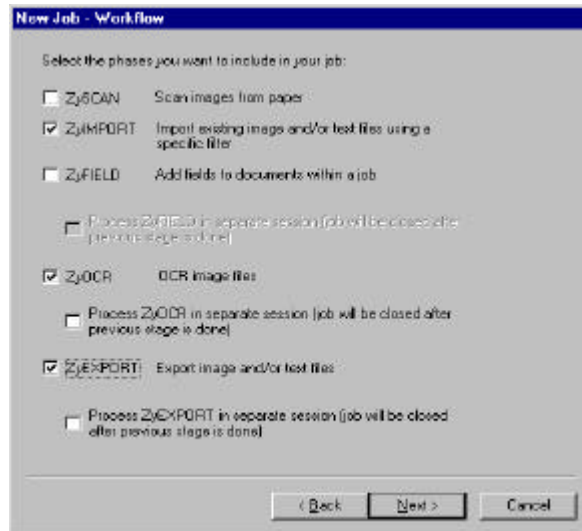
1. Create a **New File Destination**. Specify a default **Scanning Profile**. (The **Text** profile should work with most documents). ZyIndex 98 can index text and TIFF files that are generated by ZyScan 98, but it can also automatically recognize and perform full-text indexing of 250 different digital file formats. For further information, see the ZyImage 98 Manual.
2. Set **Include Image Information** to **None**.
3. Specify the name/IP address of the FTP Server used in the **FTP Server** field.
4. Add **User** and **Password**.
5. Specify the **Directory** to be used on the FTP Server (the destination for the scanned images) here called folder1. This directory must exist (create a new directory if needed).
6. The default settings can be used for the remaining fields. "Append sequence number to file name" and "Append file extension to file name" are default settings.



Setting up ZyImage

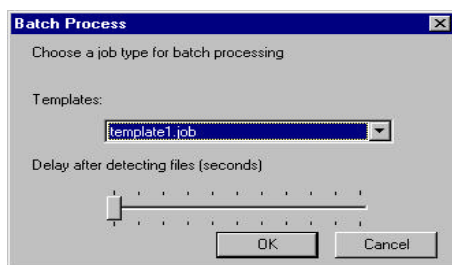
This section describes how to automatically import, perform OCR and index documents that have been scanned with the AXIS Scan Server.

1. Start ZyScan, click **New Job**, and then click **New Job Wizard**. Mark the radio button “Define New Job” and click **Next>**.
2. Mark the check-boxes for ZyIMPORT, ZyOCR and ZyEXPORT, to make the ZyImage perform OCR on the imported documents and put them in export files, see below.

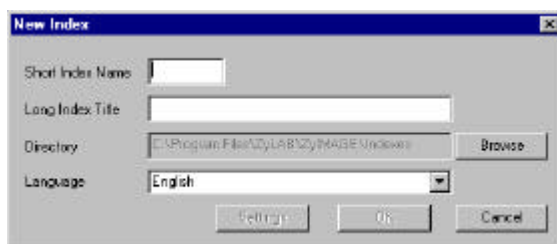


Click **Next>**.

3. Choose folder1 as the import directory. An automatic OCR will be performed on all items placed in folder1. Choose **Multi-page TIFF Filter** as the import filter. Mark the check-box for “Delete original files after import” and click **Next>**.
4. Choose OCR settings according to the type of documents that will be scanned (See ZyImage User Manual). Click **Next>**.
5. Open MS Explorer and create two folders; one for the text files (here referred to as the foldertext) and one for the TIFF files (referred to as the foldertiff). Return to ZyExport. Set the foldertext as the directory to which the text files will be exported and the foldertiff as the directory to which the image files will be exported. Click **Next>**.
6. Mark the check-box “Save as job template” and enter the name of the template (here referred to as template1). Click **Finish**.
7. Choose “Entire job...” from the File->Run Unattended... menu. Fill in the newly created template1 as template. Click **OK**.



8. Start ZyIndex and click **New**.



Enter a Short Index Name and a Long Index Title. The Short Index Name may only contain eight characters. These characters can not be changed once they have been defined. The Long Index Title can hold up to 80 characters and is used to describe the contents of an index. The Long Index Title can be changed at will. Select a directory where the index will be stored. Be sure that the directory you choose exists (create one if necessary). This directory can, for example, be shared over the network. Click **OK**.

9. Find the foldertext in MS Explorer. Drag the foldertext into the white space under “Text Files”. Click on the “Tiff Files” tab. Find the foldertiff in MS Windows Explorer. Drag the foldertiff into the white space under “Tiff Files”.
10. Click on the ZyTIMER tab. Click **Add**, and then click **Select**. Choose the index file click on **Open Index**. Double-click on your index. Set the frequency for updating the index. Click **Add Now** and then **Start Now!** The information received from ZyScan will be indexed.

Using ZyImage with AXIS Scan Server

Select the ZyImage destination file (folder1) on the AXIS Scan Server control panel and scan a document. Every time you scan to this destination, an OCR will automatically be performed of the scanned document, followed by an indexation. ZyFIND is used to search the scanned documents.