

Instant uP & Running

AXIS StorPoint™ NAS 100

AXIS StorPoint™ CD E100

CD inside



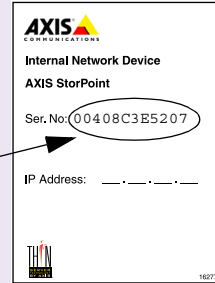
Getting Your AXIS StorPoint™ Up & Running

- 1) Connect your AXIS StorPoint Server to the network and turn it on.

- 2) **Ethernet Address - Serial Number**

You will need to know the Ethernet address of your AXIS StorPoint Server. The Ethernet address is the same as the serial number which you will find on the labels at the underside of the server unit and at the back of the tower.

You can note the serial number here:

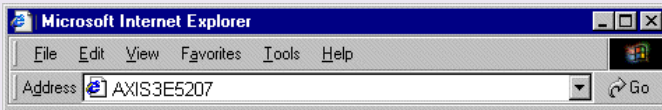


- 3) **Automatic IP Setting (DHCP)**

Try accessing your AXIS StorPoint Server via your standard Web browser. Use the default server name *AXIS<nnnnnn>* where *<nnnnnn>* are the last six digits of the serial number.

Example

The serial number of your AXIS StorPoint Server is 00408C3E5207. Enter *AXIS3E5207* in the address/location field:



- If the **File View** page appears in your Web browser, the IP address has been set automatically when you connected the AXIS StorPoint Server to your network. You can skip directly to step 6.
- If the connection cannot be established, set the IP address manually using one of the methods described in step 4.

Note: *This will not work in NetWare environments.*

- 4) **Setting the IP Address Manually**

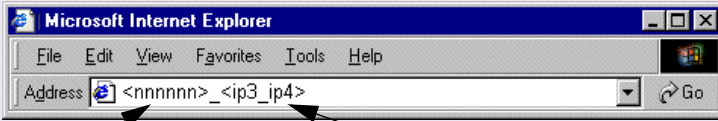
Ask your Network Administrator for an unused IP address for your AXIS StorPoint Server. Use one of the following methods to set the IP address.

Note: *The new IP address must be set within 30 minutes after restarting your AXIS StorPoint Server.*

4a)

Windows Networks - Web Browser

In most Windows environments, you can use a standard Web browser to set the IP address. Enter the following in the address/location field:



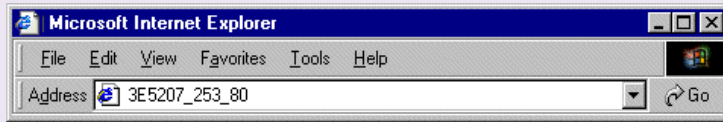
<nnnnnn> are the last six digits of the **serial number**, e.g. 3E5207 for the serial number 00408C3E5207

<ip3_ip4> the last two groups of the **desired IP address**, e.g. 253_80 for the IP address 192.16.253.80

The AXIS StorPoint Server retrieves the first two groups of the new IP address from the subnet.

Example

The serial number of your AXIS StorPoint Server is 00408C3E5207 and you want to assign it the IP address 192.16.253.80. Your Windows client has the IP address 192.16.6.40. Enter 3E5207_253_80 in the location/address field.



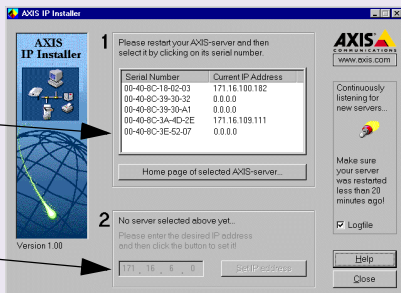
Note: If the connection cannot be established, set the IP address using *AXIS IP Installer* described in 4b.

4b)

NetWare, All Windows Platforms - AXIS IP Installer

In NetWare and on all Windows platforms, you can set the IP address using the **AXIS IP Installer** software utility which is available on the "AXIS Storage Online CD" and on the Axis Web site www.axis.com

1. Select the serial number of your AXIS StorPoint server in this list.
2. Enter the desired IP address in this field.

A screenshot of the "AXIS IP Installer" software utility. The window has a title bar "AXIS IP Installer" and a logo for "AXIS STORAGE ONLINE" with the website "www.axis.com". The main area is divided into two steps:
Step 1: "Please restart your AXIS-server and then select it by clicking on its serial number." Below this is a table with two columns: "Serial Number" and "Current IP Address".

Serial Number	Current IP Address
00-40-8C-18-62-03	171.16.100.182
00-40-8C-39-39-32	0.0.0.0
00-40-8C-39-39-A1	0.0.0.0
00-40-8C-3A-4D-2E	171.16.109.111
00-40-8C-9E-62-07	0.0.0.0

Below the table is a button labeled "Home page of selected AXIS-server...".
Step 2: "No server selected above yet. Please enter the desired IP address and then click the button to set it!" Below this is a text input field containing "171.16.100.182" and a button labeled "Set IP Address".
On the right side of the window, there is a "Logfile" checkbox which is checked, and a "Close" button. A status bar at the bottom left says "Version 1.00".

4c)

UNIX and OS/2 - ARP

In UNIX and OS/2, you can set the IP address using the `arp -s` command:

```
arp -s <IP address> <Ethernet address> temp
ping <IP address>
```

Example

```
arp -s 192.16.253.80 00:40:8C:3E:52:07 temp
ping 192.16.253.80
```

Note: *The `arp -s` command may vary from system to system.*

4d)

Macintosh - Text Editor (AXIS StorPoint CD E100 only)

In Macintosh, you set the IP address using a text editor:

1. Open the **Chooser** from the **Apple** menu.
2. Click the **AppleShare** icon.
3. From the **Select a file server** list, select `AXIS<nnnnnn>_AT` where `<nnnnnn>` are the last six digits of the serial number, e.g. `3E5207`.
4. Select **Registered User** and click **Connect**. By default, the Name is set to `root` and the Password is set to `pass`.

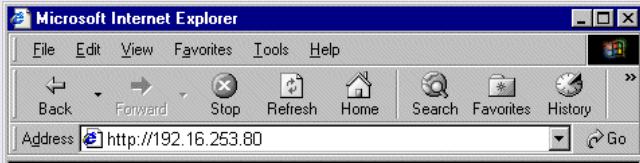


5. Select the **System** folder and click **OK**. Open the **System** icon created on the desktop and select the **Server Properties** folder.
6. Open the `config.ini` file.
7. In the **[IP]** section, set **InternetAddress** = `<the desired IP address>`.
8. In the **[Server]** section, set **Restart** = `yes` to restart the server.
9. Select **Save** from the **File** menu.

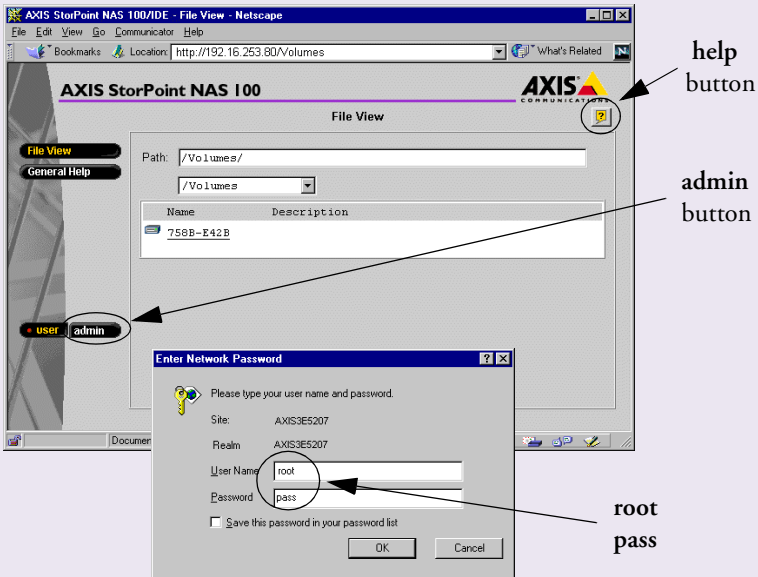
Note: *The AppleTalk protocol must be enabled on your client.*

5) Accessing Your AXIS StorPoint Server

Access the Web interface of your AXIS StorPoint Server by entering the IP address of your AXIS StorPoint server in the location/address field of your Web browser.



- 6) The File View page appears. Click the **admin** button to access the Administration Web pages. You will be prompted for the Server password the first time during a session.



Note: The default user name and password are *root* and *pass*.

- 7) For more information about setting up your AXIS StorPoint Server, refer to the "User's Manual" and other online information available on the "AXIS Storage Online CD".