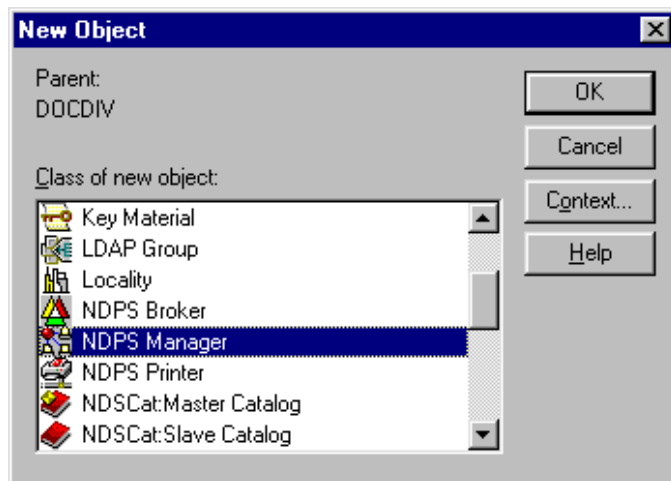


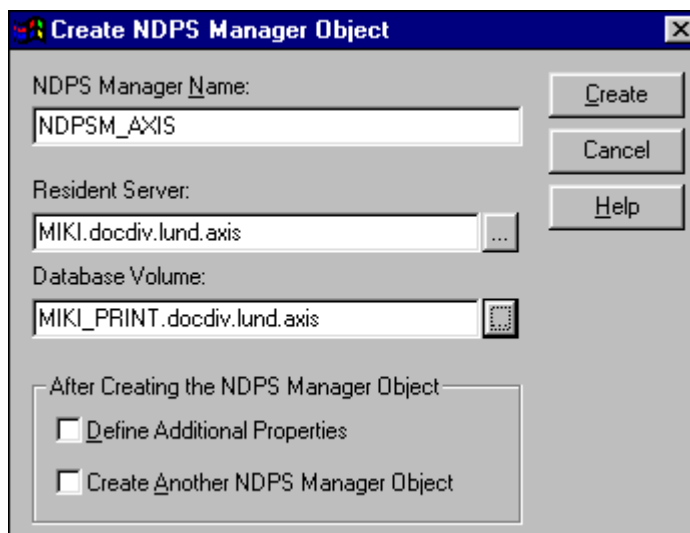
## Creating and configuring an NDPS printer utilising the Axis Gateway Configuration.

### *Step I. Creating a NDPS Printer in the NetWare Administrator with the Axis Gateway.*

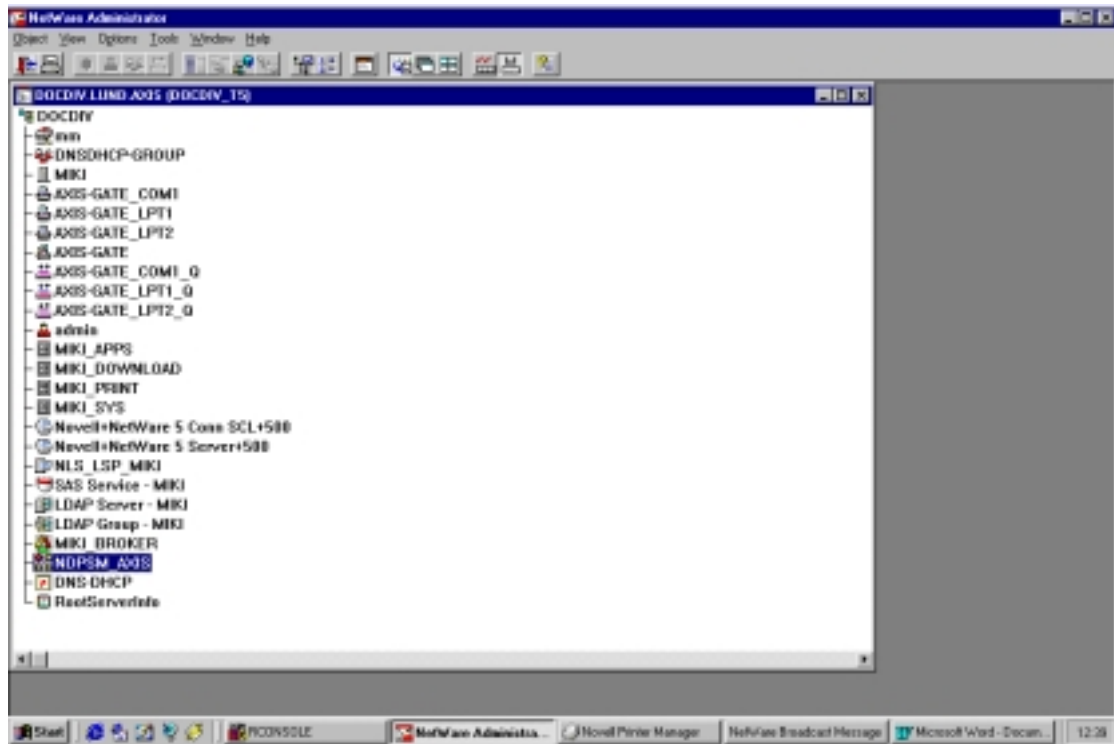
1. Start the NetWare Administrator, select the context where you would like to create your new objects.
2. Mark the context, right-click on it and press **Insert**. Alternatively, select **Object** and choose **Create**.



3. From **Class of New Object** chose **NDSP Manager**.
4. Press **OK**.
5. Enter the NDPS Manager name in the **NDPS Manager Name** field.
6. Browse and select **Resident Server** for the NDPS Manager.
7. Browse and select **Database Volume** for the NDPS Manger



8. Click **Create**. The NDPS Manager is created on the NDS tree.

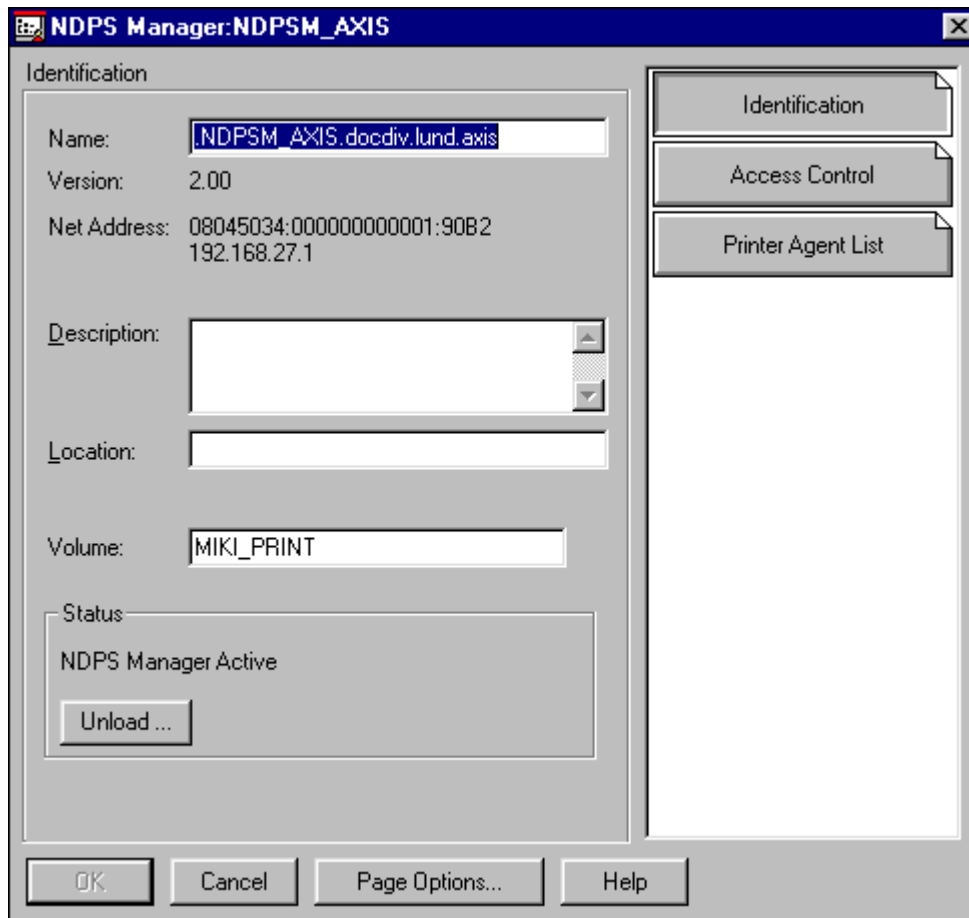


In order to view the NDPS Manager object's details proceed with the following two steps:

- a) Mark the object (NDPSM\_AXIS)
- b) Press **Enter**, double click on the selected object or select **Object /Details** from the menu.

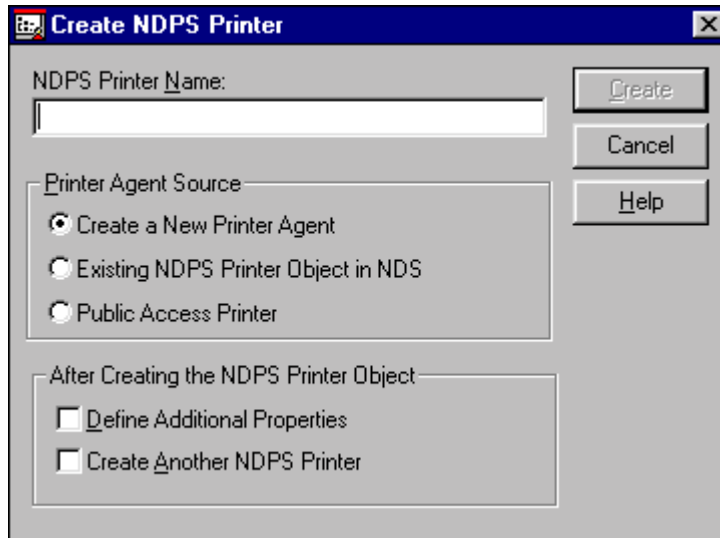
From the object's detailed view, you can see the following:

- **Identification**
- **Access Control** (add or delete users or user groups)
- **Printer Agent** List (add new delete Printer Agents)

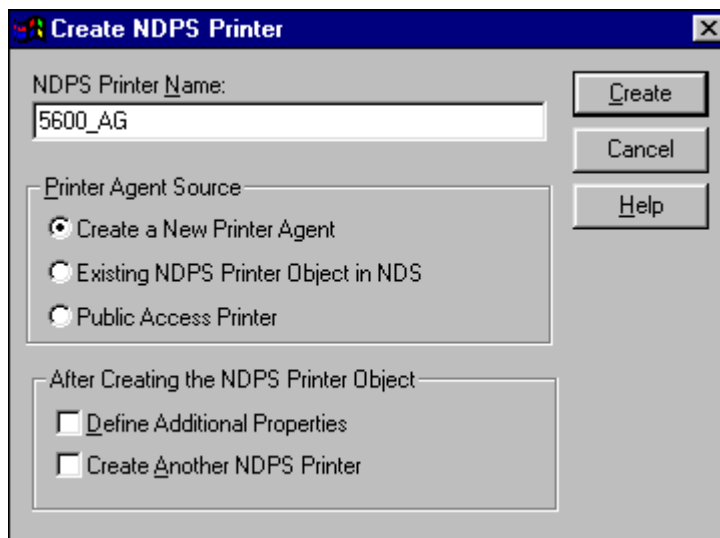


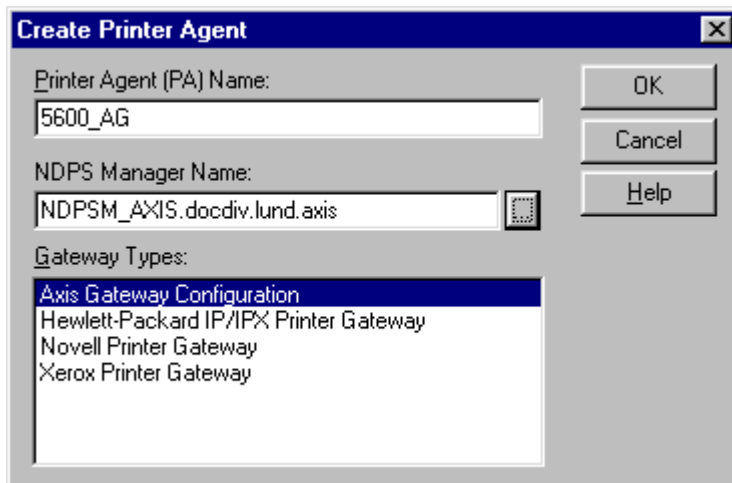
You are now ready to create a NDPS printer in the NetWare Administrator. Proceed with the following steps:

9. Mark the container (context) where you would like to have the NDPS printer located.
10. Mark the container, right click on it and press **Insert**. Alternatively, select **Object** and chose **Create**.
11. From **Class of New Object** chose NDPS Printer
12. Click **OK**

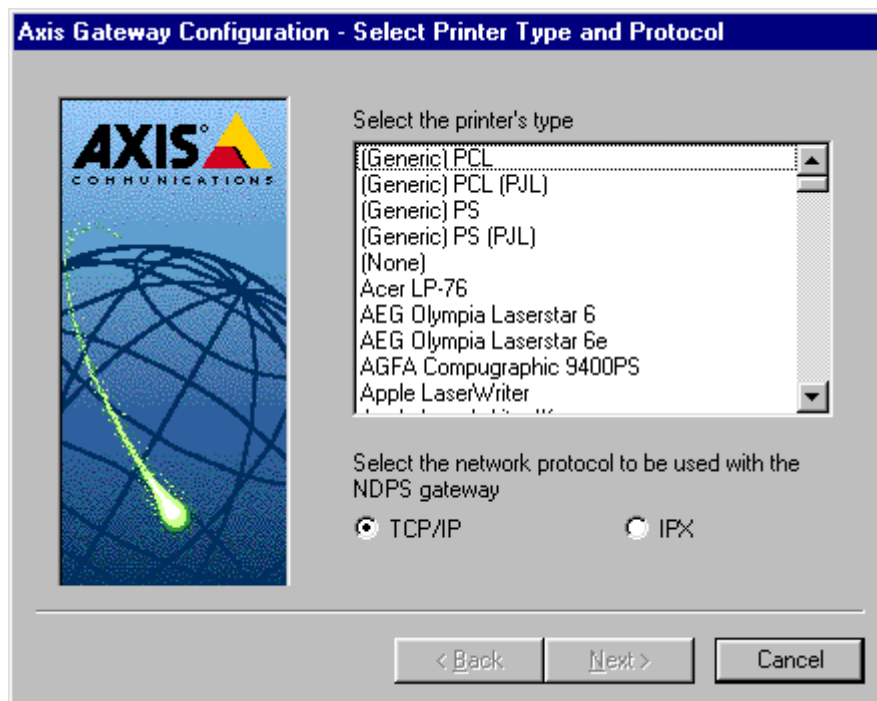


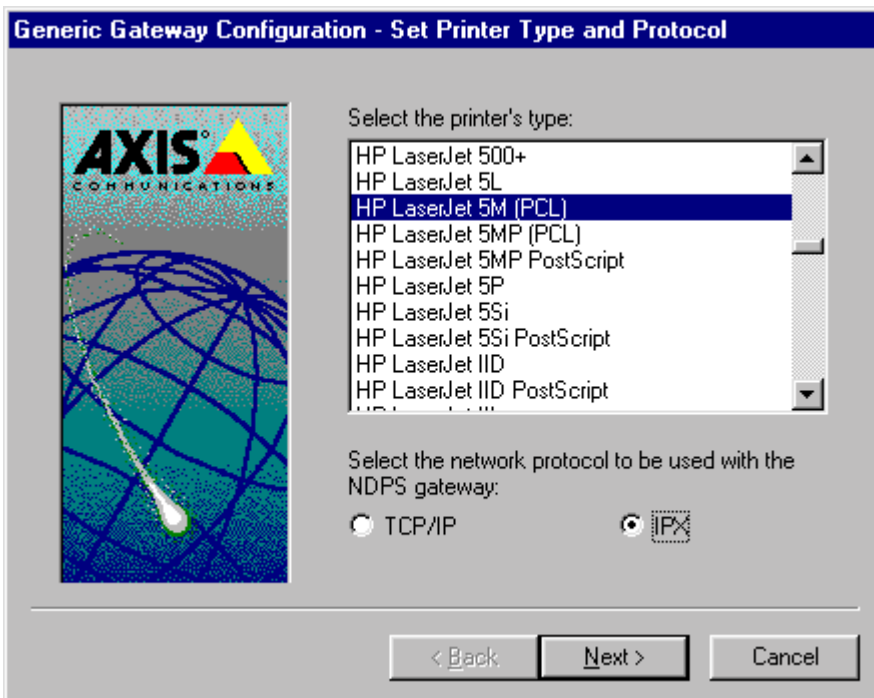
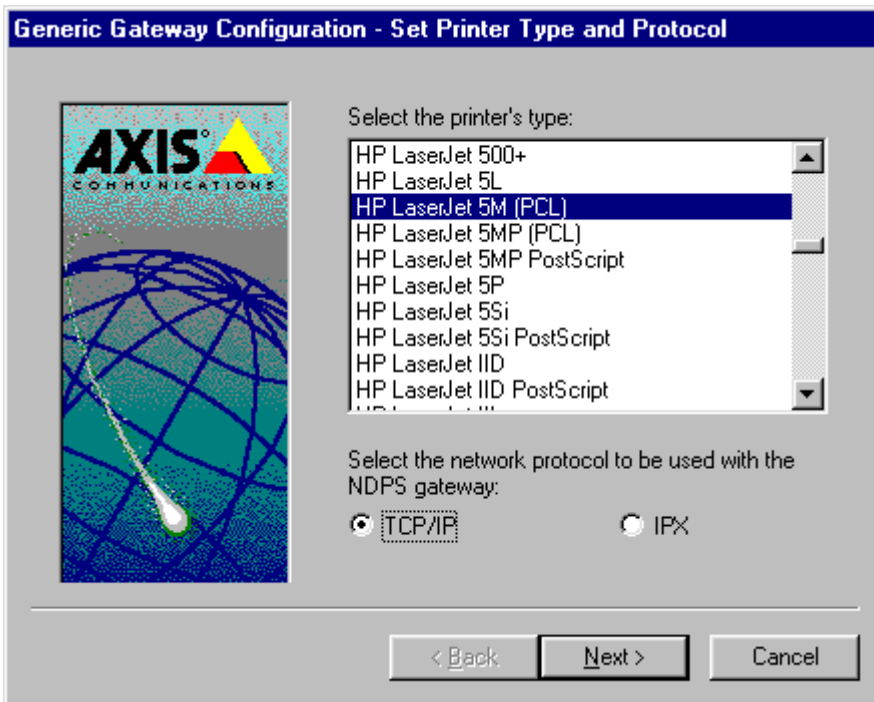
13. Type the NDPS Printer Name (5600\_AG)
14. Click **Create**.





15. Browse and select NDPS Manager Name (NDPS\_AXIS.docdiv.lund.axis)
16. Select Gateway Types – Axis Gateway Configuration
17. Click **OK**.
18. Next, select the printer's type and network protocol to be used with the NDPS gateway (TCP/IP or IPX).





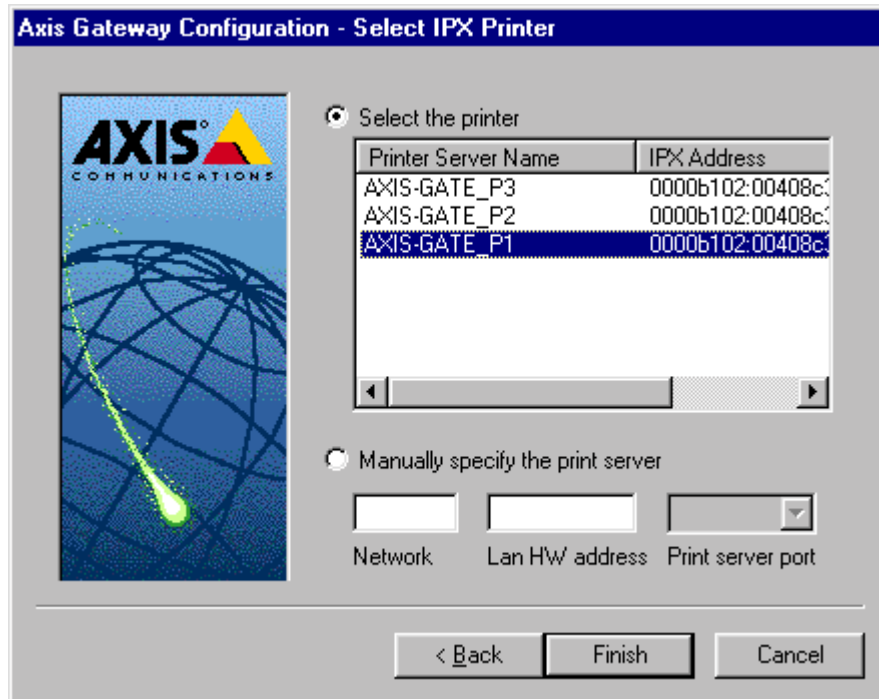
19. Continue with selecting the printer type and network protocol of your choice. Click **Next** when done



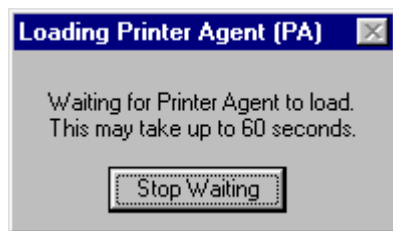
20. An automatic database search will be launched by your operating system to locate the printer and printer driver you have just chosen. Click **Next** to continue.



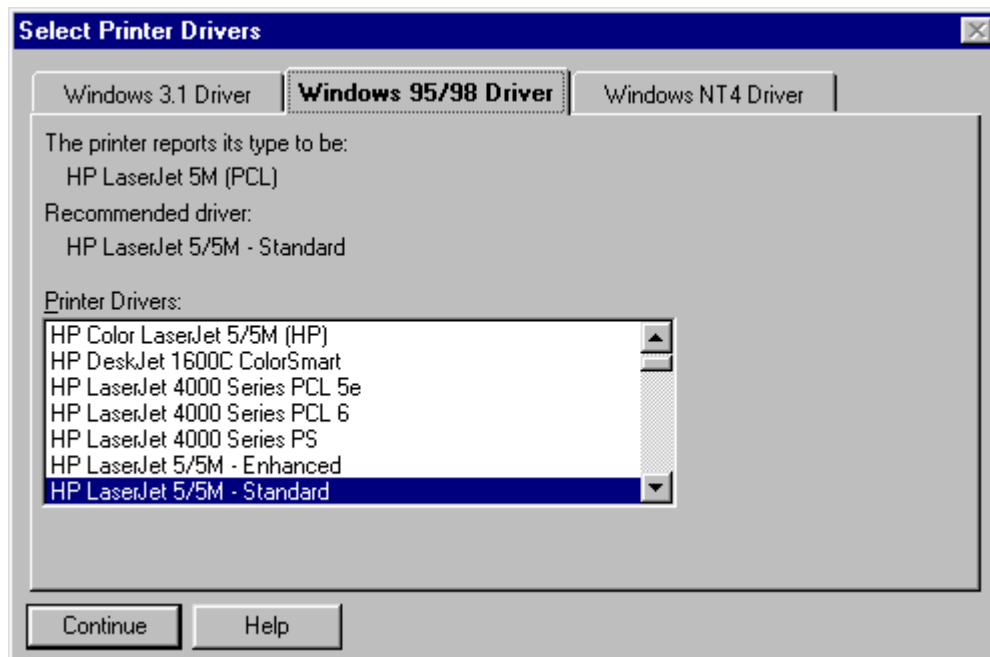




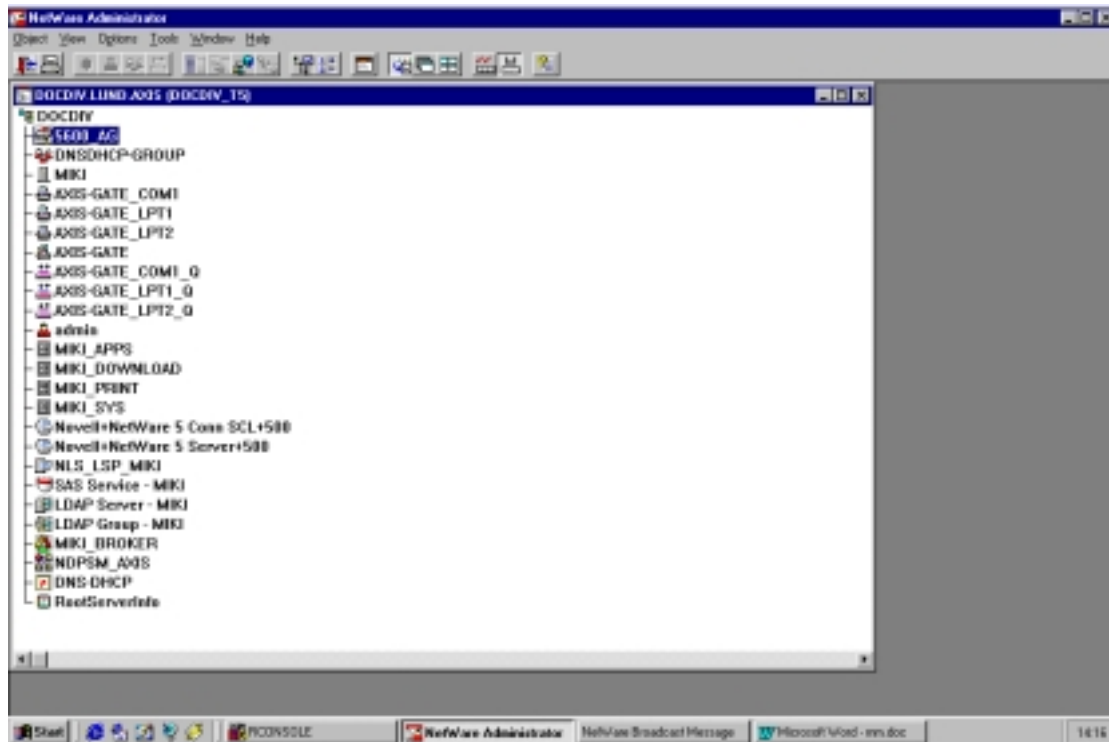
22. Select the printer of your choice and click **Finish** to continue.



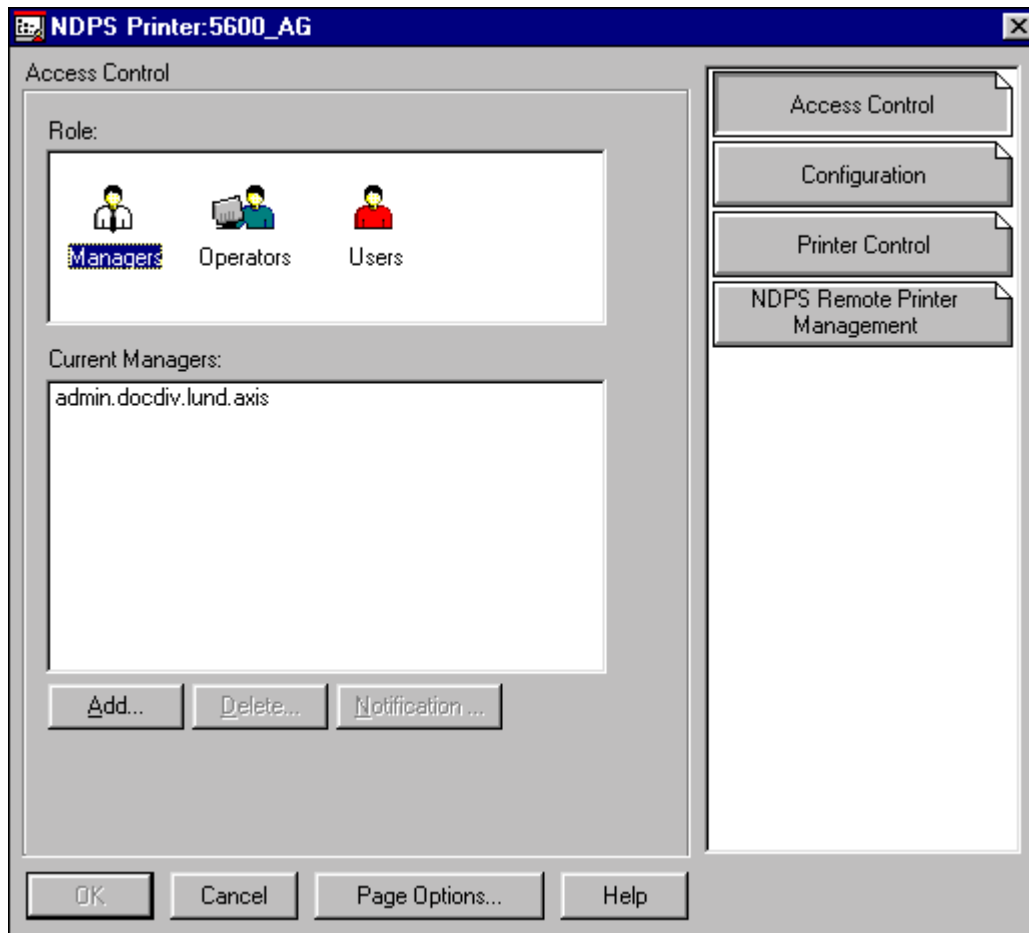
23. After approximately 60 seconds the next window will appear:



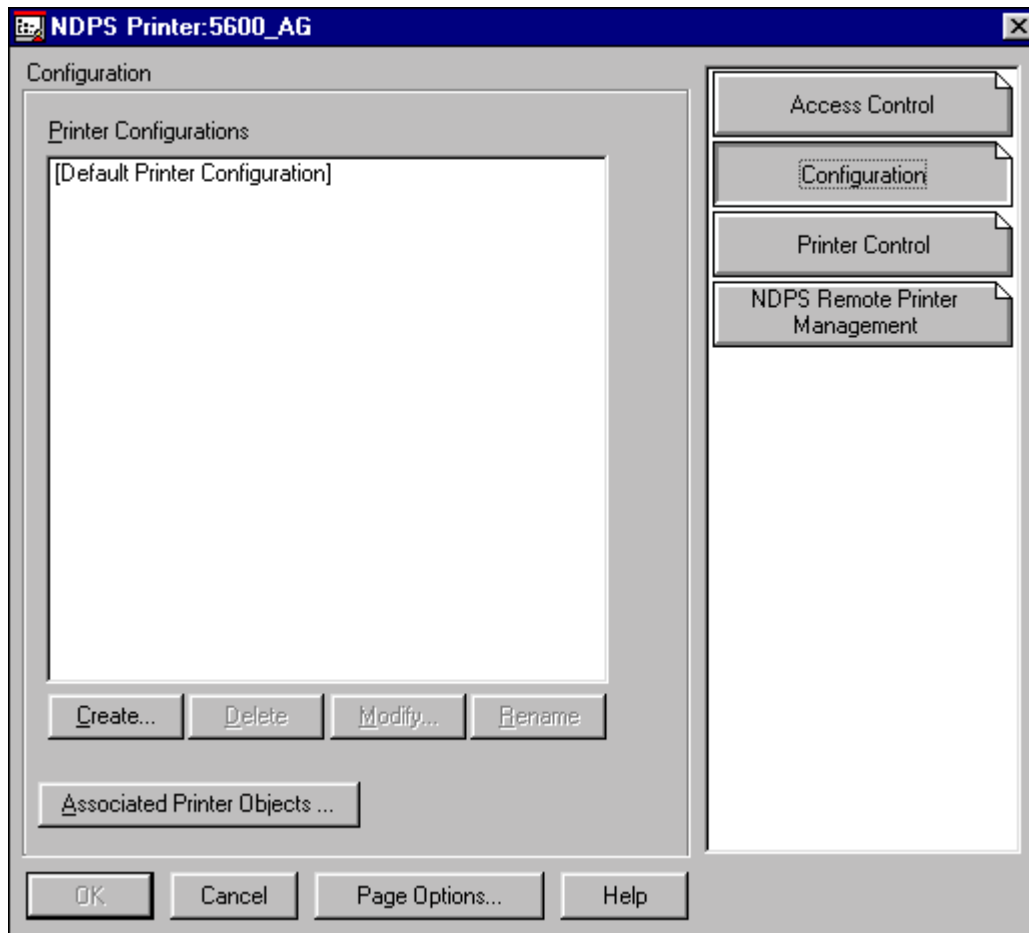
24. Select the appropriate printer drivers for Windows 3.1, Windows 95/98 and Windows NT and click **Continue**. The creation of the NDPS printer (5600\_AG) is now completed.



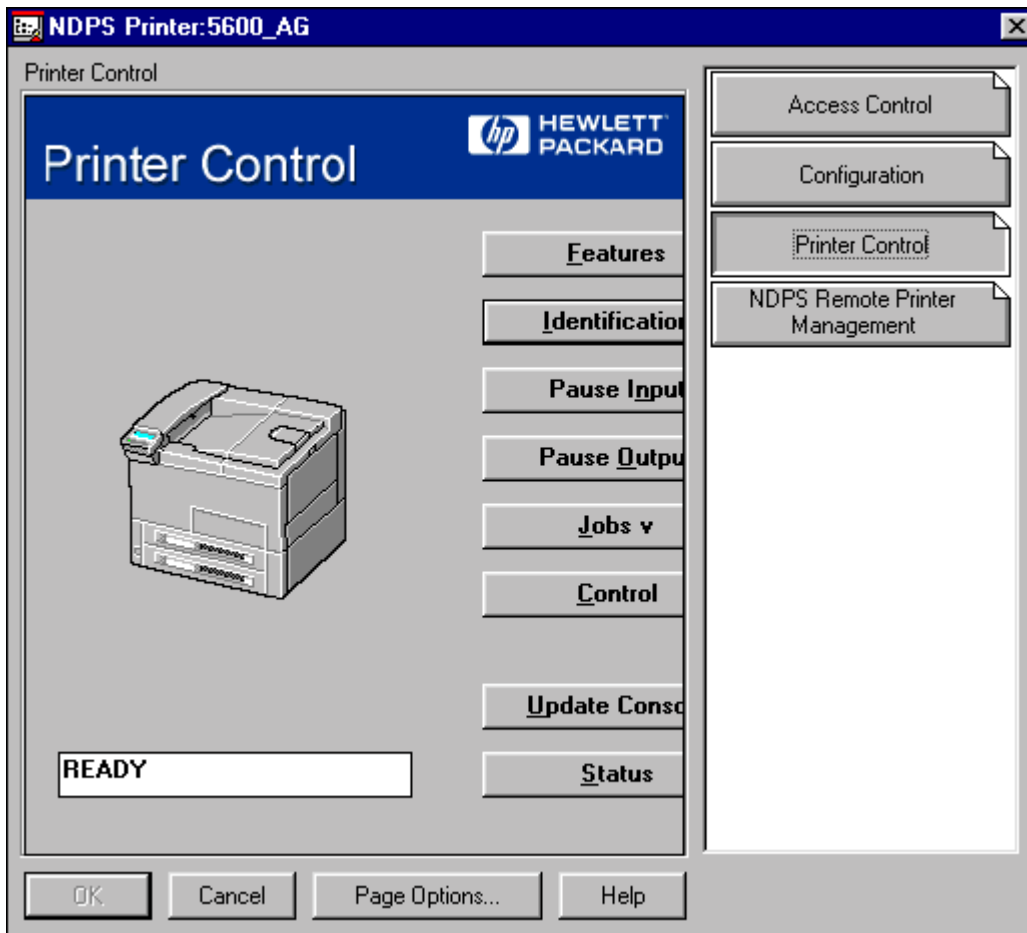
If you wish to view details on this object, proceed as you would with any other NDS object.



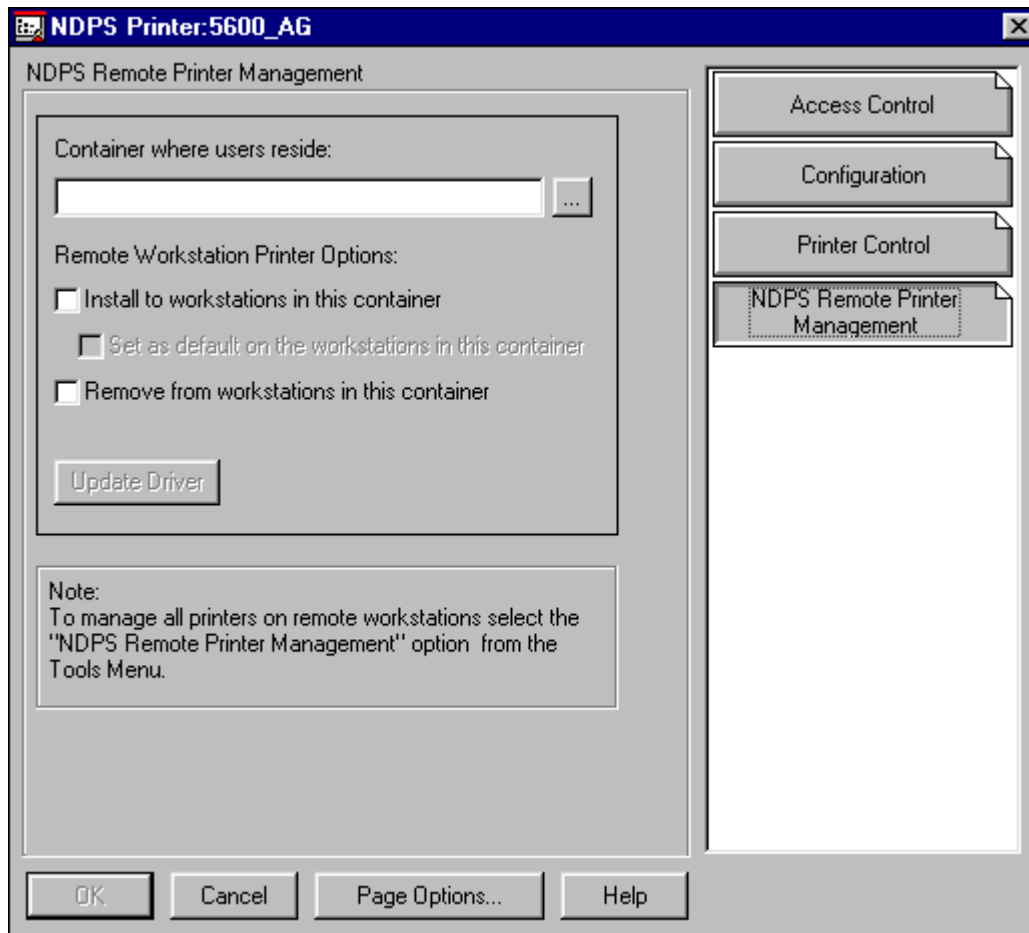
From the object's detailed view you can manage **Access Control**, Configuration, Printer Control and **NDPS Remote Printer Management**. (See below)



### Configuration



**Printer Control**

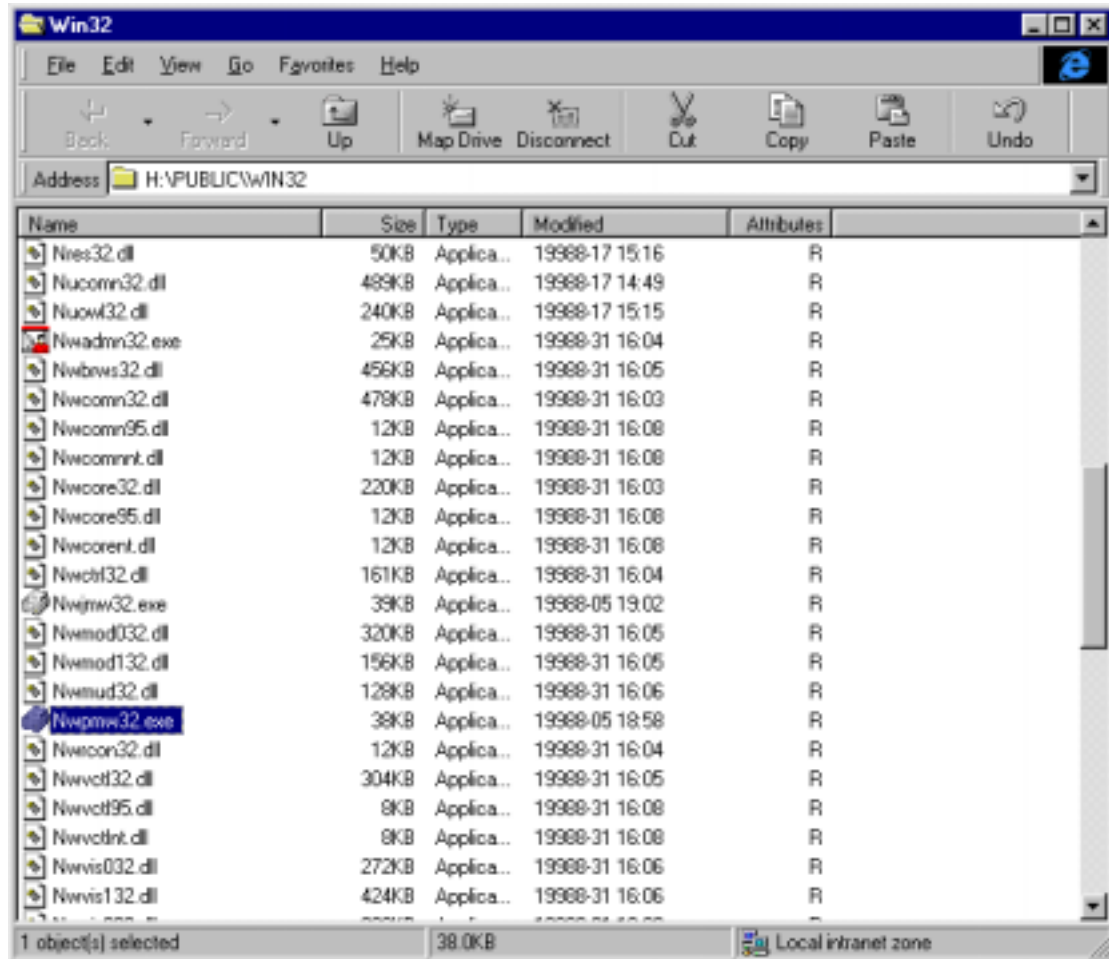


### Printer Control

## Step II. Installing a NDPS printer on a work station

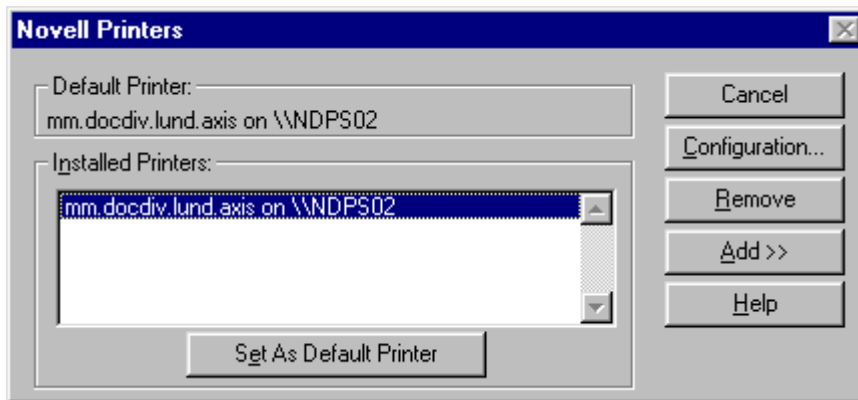
In order to install a NDPS printer on a work station, proceed with the following steps:

1. Log in on a workstation e.g. Windows 95
2. Map a driver to SYS\PUBLIC on file server e.g. [\\Miki\SYS\PUBLIC](#)
3. Browse and select Nwpmw32.exe



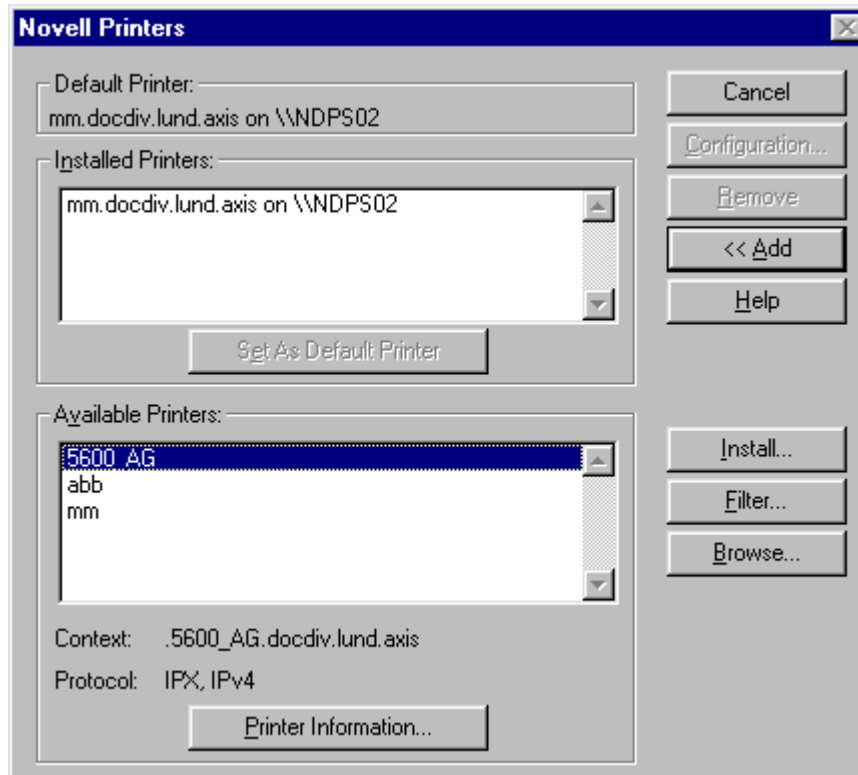


4. Select **Printer /New**.

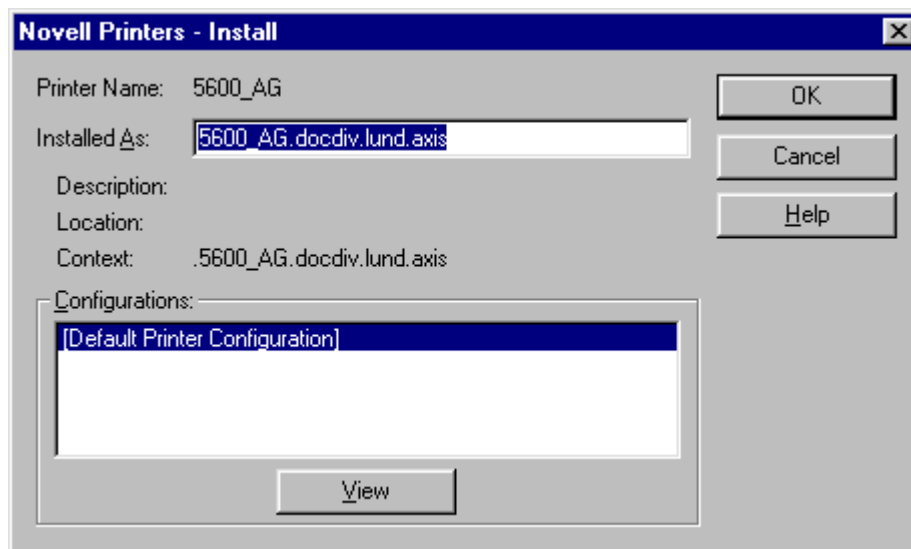


5. Select **Add**.

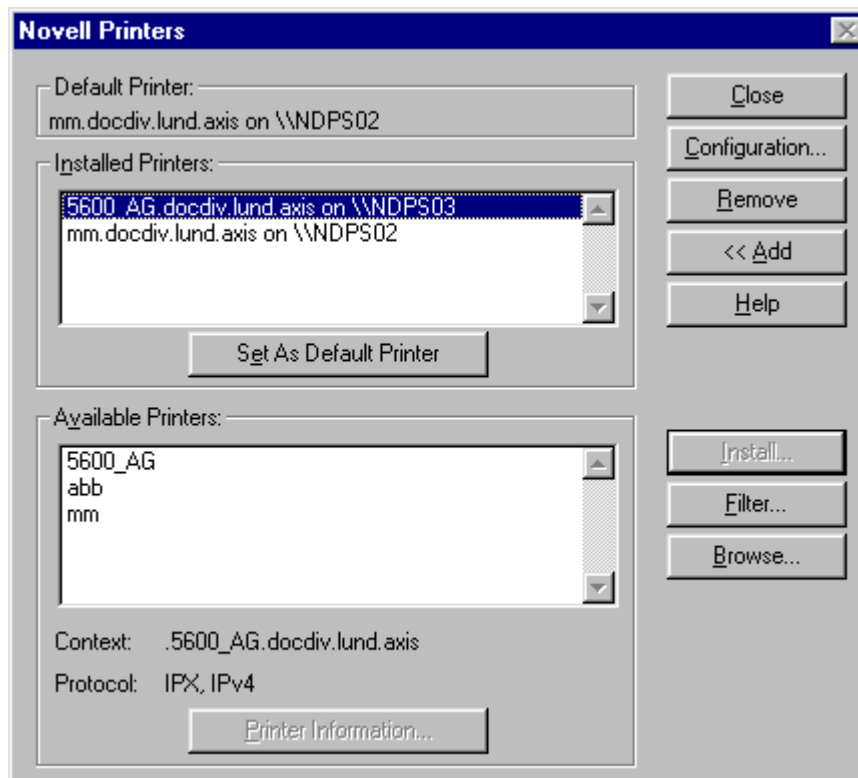




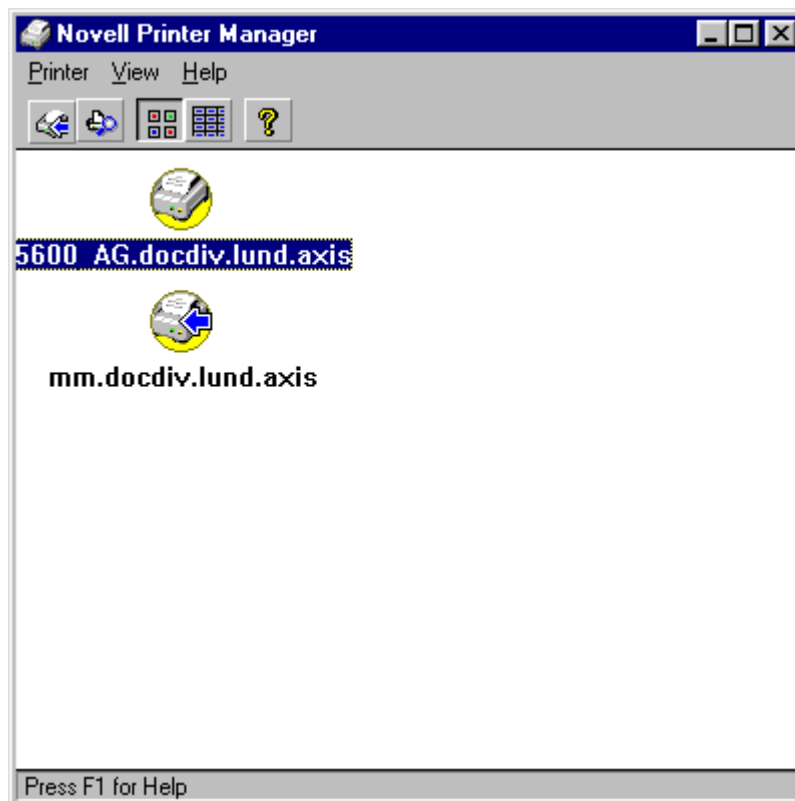
6. A list of **Available Printers** will appear.
7. Select the printer which you wish to install (e.g. 5600\_AG)
8. Click **Install**.



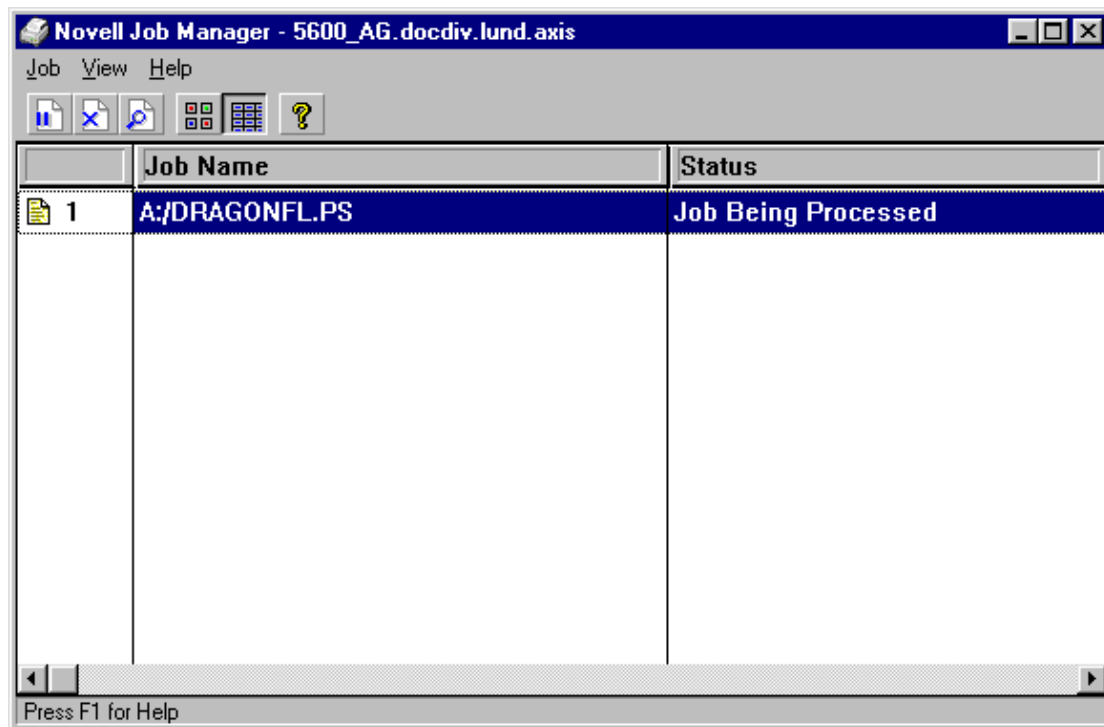
9. Click **OK**.



10. Click **Close**.



11. The printer is now installed on the workstation and you are ready to start using the printers.



**Note:**

*Make sure the following configuration parameters are set on the print server:*

- The firmware on the print server must support Axis Gateway 6.00.1 or above.
- The HP JetAdmin Support parameter must be set to YES
- The transport protocol has to be DUAL\_STACK (if you want to use Gateway protocol IPX and IP).

*Make sure the following configuration parameters are set on the workstation:*

- The workstation must have IPX installed as well as an IP NetWare Client
- The NetWare file server has to be dual stack if you intend to use IPX and IP protocols on the gateway.