

HOW TO.

Configure AXIS P3807-PVE with AXIS Camera Station

Contents

Introduction	3
About dewarped and client dewarp capture modes	4
Using the 7.5MP (16:9) forensic WDR (dewarped) @ 12.5/15 fps capture mode	4
How to configure AXIS P3807-PVE	4
How to add AXIS P3807-PVE to AXIS Camera Station	5
How to configure streaming profiles in AXIS Camera Station	7
Recommended setup	8
Using the 8.3MP (9:4) forensic WDR (client dewarp) @ 25/30 fps capture mode	9
How to configure AXIS P3807-PVE	9
How to add AXIS P3807-PVE and configure in AXIS Camera Station	9
Recommended setup	9
Considerations and limitations	10

Introduction

This document will focus on what to consider when using the AXIS P3807-PVE Network Camera with the AXIS Camera Station, as well as, how to configure the camera and the VMS to obtain the best optimal performance for the two supported capture modes:

- 7.5MP (16:9) forensic WDR (dewarped) @ 12.5/15 fps
- 8.3MP (9:4) forensic WDR (client dewarp) @ 25/30 fps

Prerequisites

AXIS P3807-PVE

AXIS Camera Station 5.20 or later

Please note that Axis doesn't take any responsibility for how this configuration may affect your system. If the modification fails or if you get other unexpected results, you may have to restore the settings to default.

About dewarped and client dewarp capture modes

To get one panoramic image from the AXIS P3807-PVE multi-sensor camera, the images from the four individual sensors are stitched.

To get the final image, the image needs to be dewarped. The dewarping is done either directly in the camera or on the client.

AXIS P3807-PVE support two different capture modes:

- 7.5MP (16:9) forensic WDR (dewarped) @ 12.5/15 fps
- 8.3MP (9:4) forensic WDR (client dewarp) @ 25/30 fps

With the 7.5MP capture mode, the image is dewarped directly in the camera.

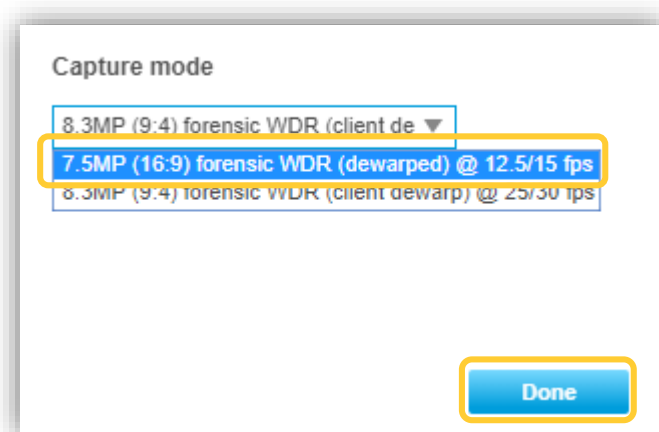
With the 8.3MP capture mode, the image is dewarped in the client.

Using the 7.5MP (16:9) forensic WDR (dewarped) @ 12.5/15 fps capture mode

How to configure AXIS P3807-PVE

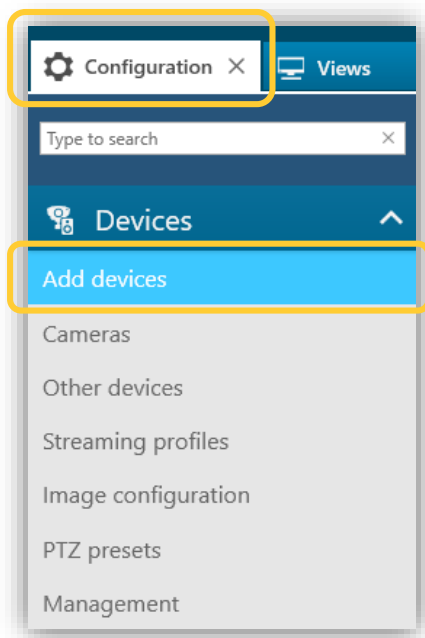
NOTE The camera is by default set to *7.5MP (16:9) forensic WDR (dewarped) @ 12.5/15 fps* capture mode. If the camera is configured for the first time or if a factory default has been made, follow the startup wizard and skip the steps below.

1. In the camera web interface, go to **Settings -> Image -> Capture mode**
2. Select **7.5MP (16:9) forensic WDR (dewarped) @ 12.5/15 fps** capture mode and click **Done**

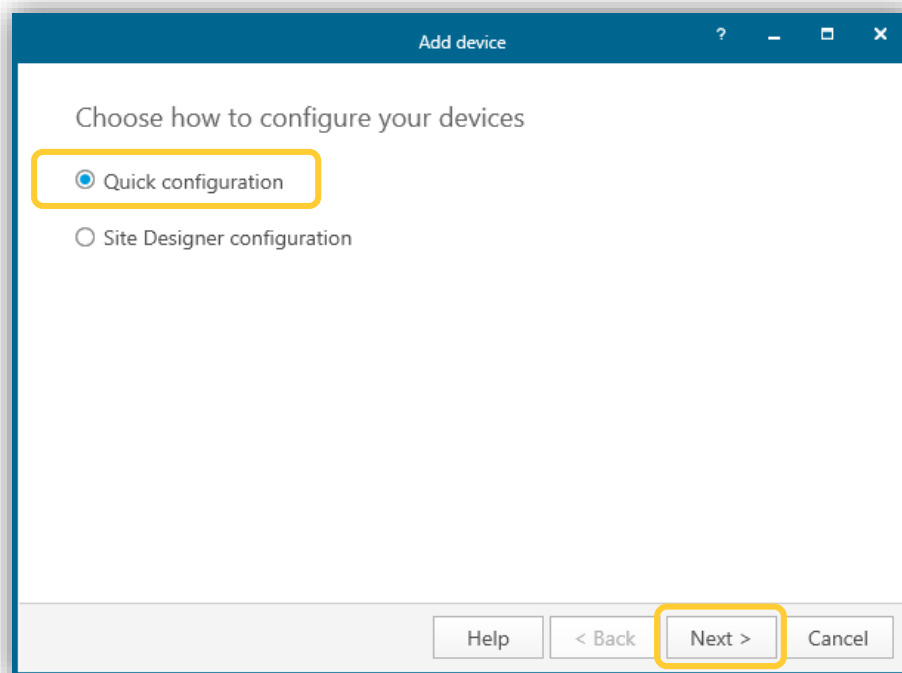


How to add AXIS P3807-PVE to AXIS Camera Station

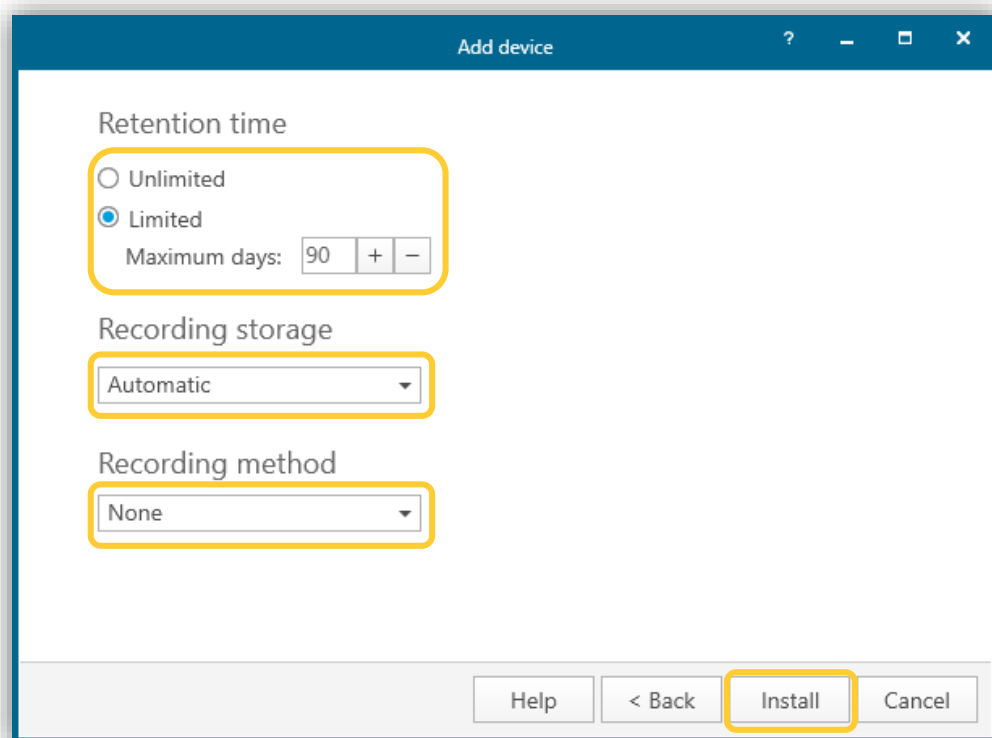
1. Log in to AXIS Camera Station client.
2. Go to **Configuration** -> **Add devices**



3. Enter the name of the camera in the **Type to search** field or click **Find by IP** and enter the IP address of the camera.
4. Click OK
5. Select the camera from the list and click **Add**
6. Select **Quick configuration** and click **Next**



7. Select the **Retention time** of the recordings, define the **Recording storage** and the **Recording method**.
8. Click **Install**.




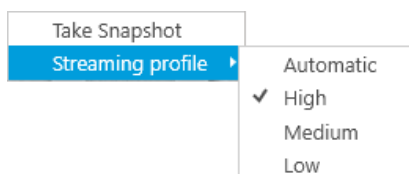
How to configure streaming profiles in AXIS Camera Station

To get the best performance from a camera, it is recommended to reuse the same streaming profiles. Since AXIS P3807-PVE doesn't use standard resolutions, it's especially important to follow this recommendation.

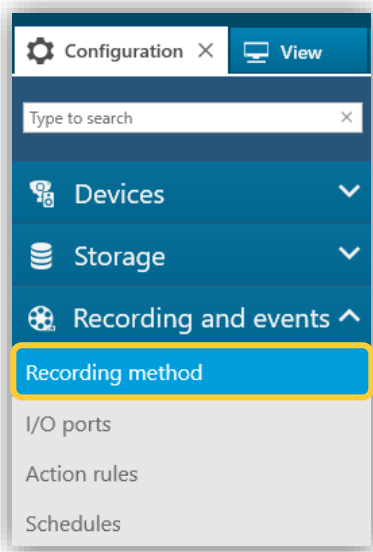
AXIS Camera Station uses three predefined streaming profiles: High, Medium and Low, which are automatically set for a device depending on the split view and the screen resolution used.

To control the profiles used by AXIS Camera Station and the streams pulled from the camera, do these steps:

1. Go to  **View** and define the split view in which the AXIS P3807-PVE should be used for in the live viewing.
2. Right-click on the AXIS P3807-PVE live view and select the desired streaming profile.



3. Go to **Configuration** -> **Recording and event** -> **Recording method**



4. Select the AXIS P3807-PVE from the list and define the same streaming profile for the recording option as is used in the live view.

The screenshot shows the configuration interface for an AXIS P3807-PVE camera. The top navigation bar includes the camera icon, name 'AXIS P3807-PVE', IP address '172.25.154.72', serial number 'ACCC8E692D93', manufacturer 'Axis', and model 'AXIS P3807-PVE'. On the right, it shows the current streaming profile 'Medium (864x384, 15 fps, H.264)'. The main configuration area is divided into three sections: 'Motion detection', 'Continuous', and 'Manual'. Each section has an 'Enabled' checkbox and 'Video settings' (Profile, Prebuffer, Postbuffer). The 'Motion detection' section also includes a 'Raise alarm' checkbox, 'Schedule setting' (Always, Edit..., New...), and an 'Advanced' section with a 'Trigger period' (5 seconds) and a 'Motion settings...' button. The 'Continuous' section has a 'Schedule setting' (Always, Edit..., New...). The 'Manual' section has 'Video settings' (Profile, Prebuffer, Postbuffer). An 'Apply' button is located at the bottom right of the configuration area.

When the steps above are performed, make sure that all the clients accessing the camera uses the same streaming profile in the live view.

NOTE The configuration of the streaming profile assure that the AXIS Camera Station reuses the same streams for the different clients, recording methods and live views. With this setup the camera will keep its performance.

Recommended setup

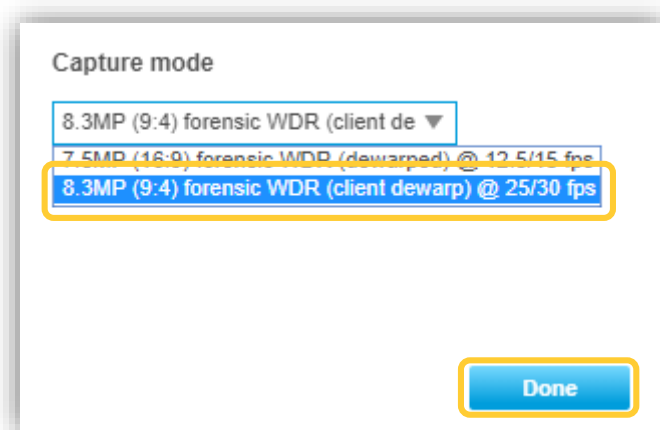
A common and recommended setup when using the 7.5MP capture mode is to pull one unique stream of the highest resolution (3648x2052) used for continuous recording and one unique stream of 1080p or 720p used for live view.

- NOTE**
- Any extra unique streams or ACAP might have an impact on the camera performance.
 - To ensure that only the desired streams are used, configure the streaming profile from Axis Camera Station accordingly.

Using the 8.3MP (9:4) forensic WDR (client dewarp) @ 25/30 fps capture mode

How to configure AXIS P3807-PVE

1. In the camera web interface, go to **Settings -> Image -> Capture mode**
2. Select the **8.3MP (9:4) forensic WDR (client dewarp) @ 25/30 fps** capture mode and click **Done**



How to add AXIS P3807-PVE and configure in AXIS Camera Station

To add and configure the camera to AXIS Camera Station, follow the same steps and recommendation as for **7.5MP (16:9) forensic WDR (dewarped) @ 12.5/15 fps capture mode**.

Recommended setup

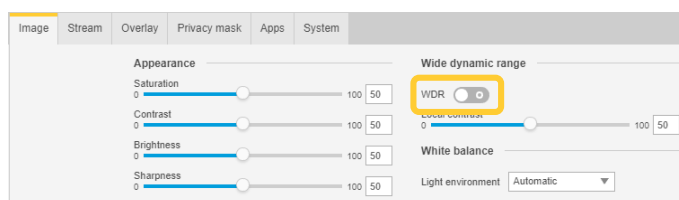
A recommended setup when using the 8.3MP capture mode is to pull one unique stream of the highest resolution (4320x1920) used for continuous recording and one stream of 2016x896 or 864x348 used for live view.

NOTE

- For the 8.3MP capture mode, WDR option has a major influence on the camera performance. If a high frame rate is required, turn off the WDR option.
- When the WDR option is turned off, the camera continues to provide a more limited WDR solution, based on the dual sensitivity pixels method. For more information on WDR methods, check out the white paper [White dynamic range](#) on axis.com.
- To ensure that only the desired streams are used, configure the streaming profile from Axis Camera Station accordingly.

Considerations and limitations

- To get 25/30 fps, turn off the WDR option in the camera web interface and pull one unique stream only from the camera.



- When using the 8.3MP capture mode the dewarped image is not supported in the AXIS Camera Station mobile app.
- The streaming profile in AXIS Camera Station is by default set to Automatic. To minimize the risk of using unnecessary unique streams, set the same parameters for the low and the medium streaming profiles.