



CONFIGURATION

AXIS PTZ Cameras

CONFIGURE AUTOTRACKING

Created: January 16, 2014
Last updated: February 1, 2016
Rev: 2.0

-
- 1** Please note that AXIS does not take any responsibility for how this configuration may affect your system. If the modification fails or if you get other unexpected results, you may have to restore the factory default settings as described in the User's manual.

Autotracking in AXIS PTZ cameras

If Autotracking is supported in a specific PTZ product, please see the datasheet.

Autotracking detects movement in the camera's field of view and will follow the motion, e.g. a person or vehicle, until it disappears from the monitored area. The camera will automatically pan and tilt to follow the motion and, if there is a lot of movement simultaneously in the view, the area with the most amount of motion will be monitored.

When there are no moving objects in the field of view, the camera will return to the 'home' position, if this feature is enabled under PTZ > Preset positions.

Note: The Autotracking feature is designed for areas where there is a limited amount of movement.

Autotracking may be very sensitive and trigger on as example shadows and wind in trees, it is recommended to configure the feature with following factors in mind;

- [Exclude areas / privacy masks](#)
- [Sensitivity](#)
- [Max limits for the feature \(pan/tilt\)](#)
- [Return to home](#)
- [PTZ Control Queue](#)

There are no general guidelines on configuration of the feature, basically due to the fact that each configuration must be done under the circumstances to match the purpose and priorities for each particular case.

1. Exclude areas

Autotracking will not trigger on movement within an area blocked by a Privacy Mask or **Exclude Area**.

The exclude areas are easy to configure and they are virtually placed in the image.

AXIS Q6044 Network Camera Live View | Setup | Help

Exclude Areas

Name	Enabled
Exclude Area 1	yes

Add / Edit Exclude Area

Area name:

AXIS Q6044 Zoom 1.9X

Exclude Area 1

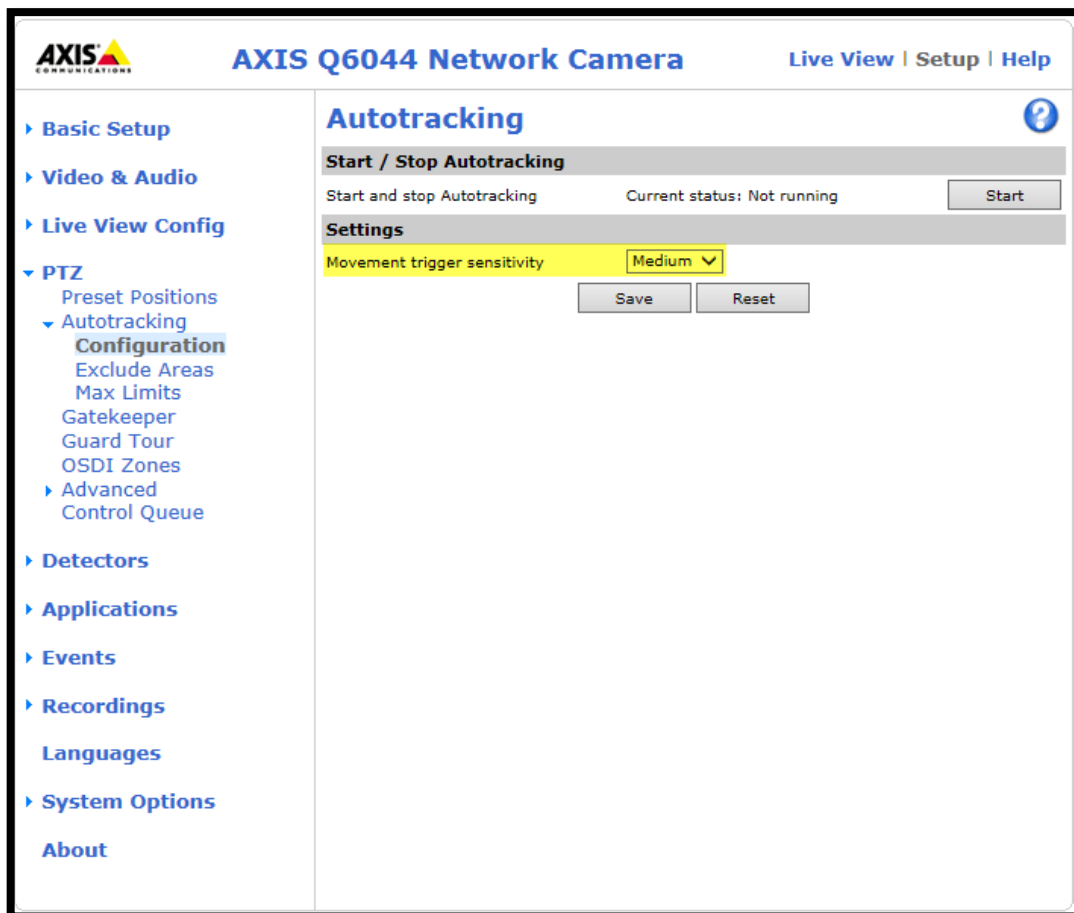
TILT: Up, Down

PAN: Left, Right
ZOOM: Wide, Tele
FOCUS: Near, Far Auto
IRIS: Close, Open Auto
BRIGHTNESS

2. Sensitivity

Movement trigger sensitivity - Select High, Medium, or Low to define the sensitivity level for Autotracking.

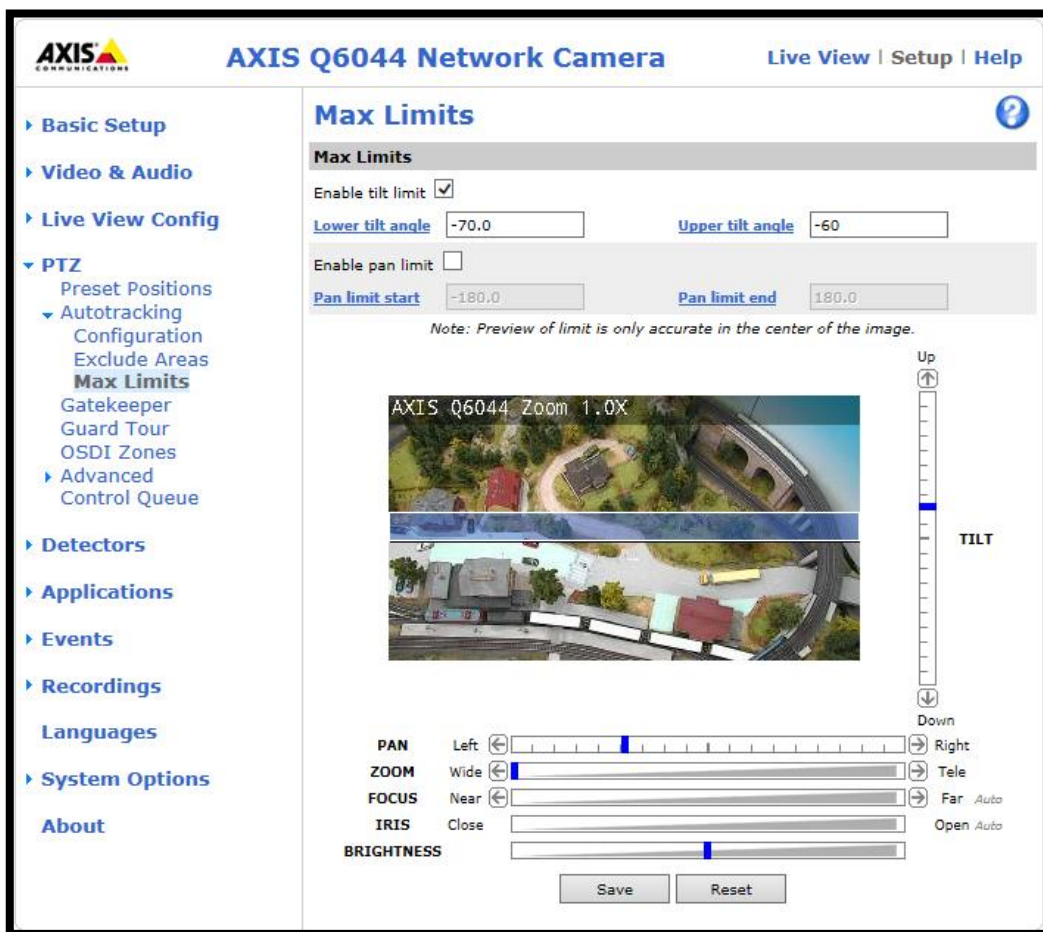
Medium sensitivity is the recommended setting, but high or low may suit certain areas better depending on the image contrast and size of the moving objects in the monitored area.



3. Max Limits

Autotracking will not follow movement beyond the limits of a Privacy Mask or **Autotracking Max Limits**.

Set the values (in degrees) to define the pan and tilt limits for the area where Autotracking is allowed. Any movement in the field of view beyond the set limits will be ignored, for example in outdoor surveillance; birds in the sky may not be of interest and could be excluded using this function. In the preview window, the max limits will be highlighted by blue horizontal and vertical bars.



4. Return to home

It is recommended to configure the “**Return to home when inactive**”, so that the camera returns to its original position after Autotracking has stopped. Return to home is configured under **Setup->PTZ->Preset Positions**.

“**Start/Stop Autotrack**” - Click the Start button to manually start Auto Tracking and click the Stop button to manually stop Auto Tracking.

The screenshot displays the web interface for an Axis Q6044 Network Camera. The page title is "AXIS Q6044 Network Camera" and it includes "Live View | Setup | Help" links. The left sidebar contains a navigation menu with categories like Basic Setup, Video & Audio, Live View Config, PTZ (with Preset Positions selected), Detectors, Applications, Events, Recordings, Languages, System Options, and About.

The main content area is titled "Preset Positions" and contains the following sections:

- Preset Position Setup:** Includes a "Current position:" field, a checkbox for "Use current position as Home", and an "Add" button.
- Available positions:** Shows a dropdown menu with "Home (H)" selected, and "Go to" and "Remove" buttons.
- Return to home when inactive:** A highlighted section with a text input field containing "180 [0..300] seconds, 0 = disabled" and a "Save" button.
- Set new Pan 0°:** A button to reset the pan position.

The central part of the interface features a live video feed showing an aerial view of a residential area. Above the feed, it says "AXIS Q6044 Zoom 1.0X". To the right of the feed is a vertical "TILT" control with "Up" and "Down" arrows. Below the feed are icons for "Playing, Motion JPEG", "Full Screen", and "Refresh".

At the bottom, there is a control panel with sliders and buttons for:

- PAN:** Left and Right arrows with a slider.
- ZOOM:** Wide and Tele arrows with a slider.
- FOCUS:** Near and Far arrows with a slider.
- IRIS:** Close and Open Auto arrows with a slider.
- BRIGHTNESS:** A slider.
- Buttons for "Home", "Ctrl panel", and "Start Autotrack".

5. PTZ Control Queue

It is strongly recommended to enable the PTZ control queue if Autotracking and the Guard tour (recorded or preset) are simultaneously enabled. Since the Guard tour has lower priority than Autotracking, the PTZ control queue prevents the camera from abandoning Autotracking to start a Guard tour.

