

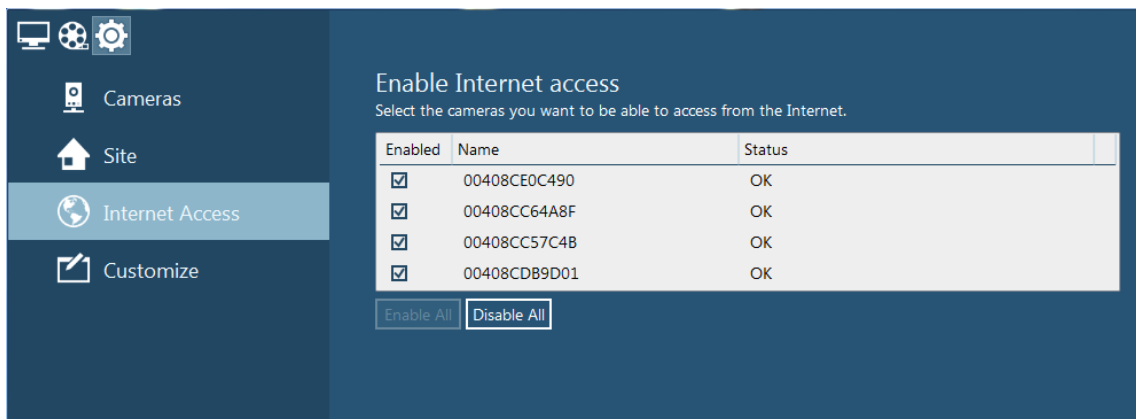


AXIS Camera Companion

AXIS Camera Companion – Internet access

AXIS Camera Companion 2.0 introduces a new way to access sites and cameras remotely. When installing AXIS Camera Companion on a PC with internet connection you will be asked to login with your MyAxis account. This is the same account as you would use when you login to www.axis.com to download product firmware or software updates. If you do not already have a MyAxis account, click *Register new user* to create a new account.

Once a site has been created it is possible to enable Internet access on one or multiple cameras belonging to the site. This is done by clicking on the Configuration icon on the top left hand corner of the window. In the Configuration workspace click on Internet access in the left hand menu.



Tick the box for the cameras you want to access remotely or click Enable all and wait for the Status to show OK. Internet access is now enabled.

To access your site from a remote location open up AXIS Camera Companion 2.0 and log in with the same MyAxis account as used on the local site. Select the remote site, type in the site password and press Enter. You should now be connected to the site.

Manually setting up Internet access

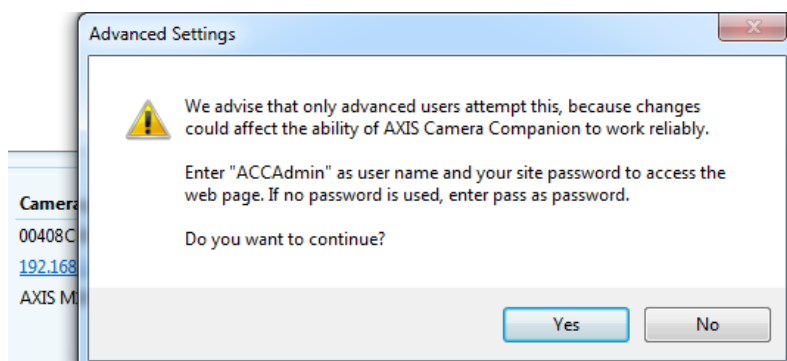
Not all routers support UPnP and in some routers UPnP has been disabled by choice. If you have tried enabling internet access in AXIS Camera Companion and get the message “unable to configure Internet Access” or similar it should be possible to set your cameras and router up manually. This guide can also be used if you want to specify which external ports your cameras should use for internet access.

Step 1: Set static IP addresses

Before you start, please make sure the cameras have been configured with a static IP address. In our example we will use 4 Axis cameras with the following settings:

| IP address: | Internal HTTP port: | External HTTP port: |
|---------------|---------------------|---------------------|
| 192.168.1.101 | 80 | 8001 |
| 192.168.1.102 | 80 | 8002 |
| 192.168.1.103 | 80 | 8003 |
| 192.168.1.104 | 80 | 8004 |

Open the AXIS Camera Companion client and click on the Configuration icon in the top left hand corner. In the camera list mark the first camera and then click on the cameras IP address that appears under Camera Properties. If the following prompt appears, click yes and a browser window will open asking you to log in to the camera.



Type in the username “ACCAdmin” and the password that you set for you AXIS Camera Companion site and click OK to enter the Basic Setup page in the camera. To set a static IP address for the camera click on System options – Network in the left hand menu.

Basic TCP/IP Settings

Network Settings

View current network settings:

IPv4 Address Configuration

Enable IPv4

Obtain IP address via DHCP

Use the following IP address:

IP address:

Subnet mask:

Default router:

IPv6 Address Configuration

Enable IPv6

Services

Enable ARP/Ping setting of IP Address

Enable AVHS

One-click enabled Always

Proxy:

Proxy port:

Proxy login:

Proxy password:

Proxy authentication method: Basic Digest Auto

AXIS Internet Dynamic DNS Service

Select “Use the following IP address” and enter the static IP address you want to set for the camera. Also set subnet mask (255.255.255.0) and Default router address (in our example 192.168.1.1). Click the Save button at the bottom of the page to save the changes.

Step 2: Manually select NAT router

Next step is to go to Advanced under System options – Network – TCP/IP.

- ▼ System Options
 - ▶ Security
 - Date & Time
 - ▼ Network
 - ▼ TCP/IP
 - Basic
 - Advanced**
 - SOCKS
 - QoS
 - SMTP (email)
 - SNMP
 - UPnP™
 - RTP
 - Bonjour
 - ▶ Storage
 - Maintenance
 - ▶ Support
 - ▶ Advanced
- About

Use the following NTP server address:

Network address: (host name or IP address)

Host Name Configuration

Use the host name:

Enable dynamic DNS updates

Register DNS name: (Axisproduct.example.com)

TTL:

Link-Local IPv4 Address

Auto-Configure Link-Local Address

HTTP

HTTP port:

HTTPS

HTTPS port:

NAT traversal (port mapping) for IPv4

NAT traversal is disabled.

Use manually selected NAT router: (LAN IP address)

Alternative HTTP port: *

* If set to blank or 0, a port number will be set automatically upon enable.

FTP

Enable FTP server

RTSP

Enable RTSP server*

RTSP port:

*H.264 video streams will be unavailable if this is disabled.

On the Advanced TCP/IP settings page make sure the HTTP port is set to default value 80. Under NAT traversal (port mapping) for IPv4, tick the bow for “Use manually selected NAT router” and enter the routers local IP address in the box.

In the box next to “Alternative HTTP port” enter the external port number that the camera will use for internet access. In our example we have used 8001. Click the Save box at the bottom of the page to save the changes.

Repeat the above steps for every camera but use a different IP address and Alternative port number for each.

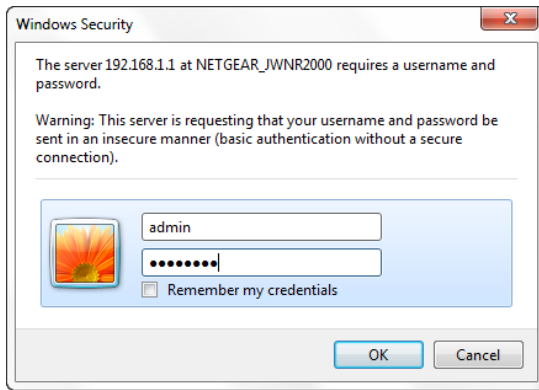
Step 3: Setup port forwarding rules

Once the cameras have been configured it is time to set the Port forwarding rules in the router. The following information is an example on how to setup port forwarding rules in a Netgear WNR2000v3. For information on how to setup your specific router please check the routers User manual.

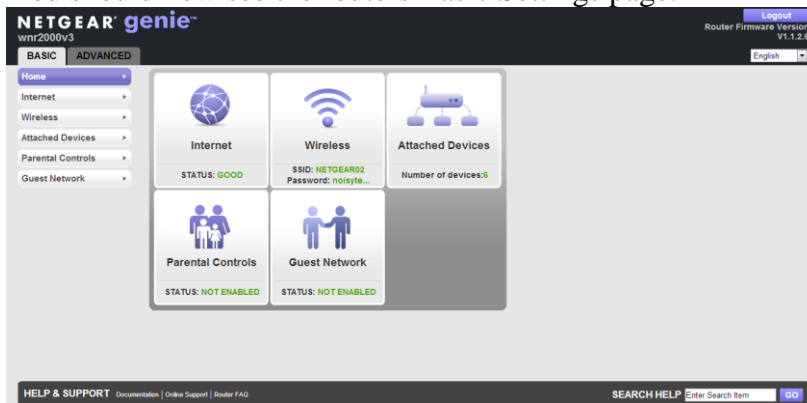
Open a web browser like Internet Explorer, Safari, Chrome or Firefox and type in the routers local IP address in the address field.



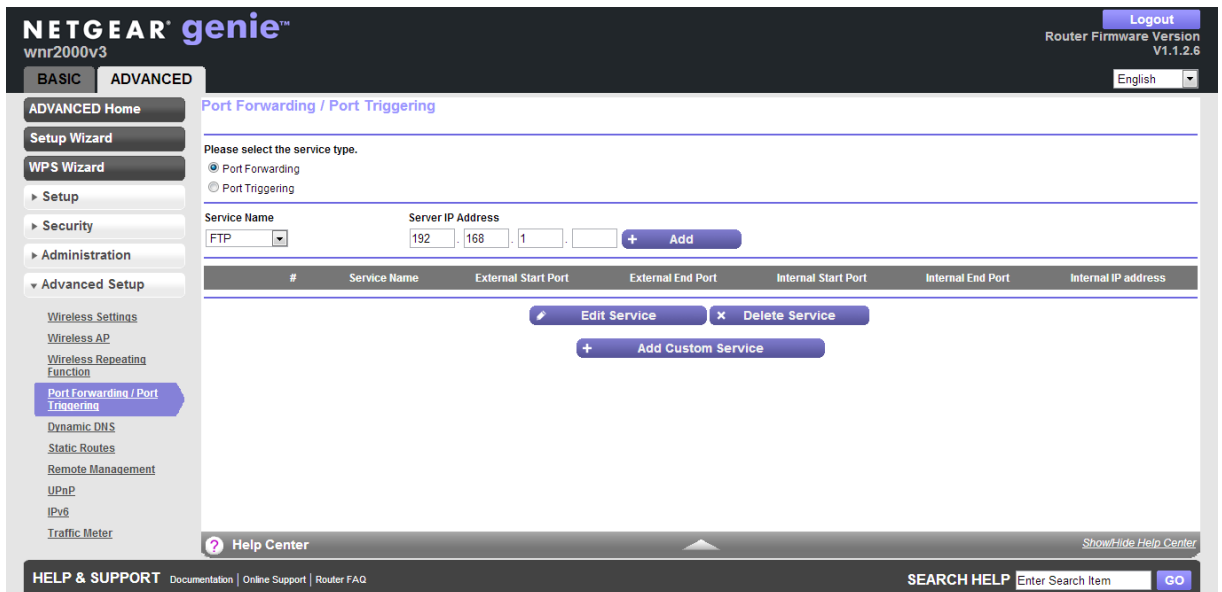
Enter you username and password in the Login box that appears and click OK.



You should now see the routers Basic Settings page.



Click on Advanced at the top and in the new menu that appears on the left click Advanced setup - Port forwarding/Port triggering to reach the Port Forwarding page.



This is the section in the router where we will specify which local IP address belongs to which External port number. Make sure there is a dot in the radio button for “Port forwarding” and click on “Add Custom Service”.

NETGEAR genie™
wnr2000v3

BASIC **ADVANCED**

Ports - Custom Services Cancel Apply

ADVANCED Home
Setup Wizard
WPS Wizard
▶ **Setup**
▶ **Security**
▶ **Administration**
▼ **Advanced Setup**

Wireless Settings
Wireless AP
Wireless Repeating Function
Port Forwarding / Port Triggering
Dynamic DNS
Static Routes
Remote Management
UPnP

Service Name: M1014
Protocol: TCP/UDP
External Starting Port: 8001 (1-65534)
External Ending Port: 8001 (1-65534)
 Use the same port range for Internal port
Internal Starting Port: 80 (1-65534)
Internal Ending Port: 80
Internal IP address: 192 . 168 . 1 . 101

Or select from currently attached devices

| | IP Address |
|----------------------------------|---------------|
| <input type="radio"/> | 192.168.1.142 |
| <input type="radio"/> | 192.168.1.103 |
| <input type="radio"/> | 192.168.1.104 |
| <input checked="" type="radio"/> | 192.168.1.101 |
| <input type="radio"/> | 192.168.1.102 |
| <input type="radio"/> | 192.168.1.114 |

For the first camera enter the settings as shown in the screenshot above. Remember to use the same local IP address and external port number as was set in the camera earlier. Click the Apply button to save the changes and repeat the same steps for each camera.

When the settings have been saved you can access the cameras over the internet using the cameras external IP address and port number.

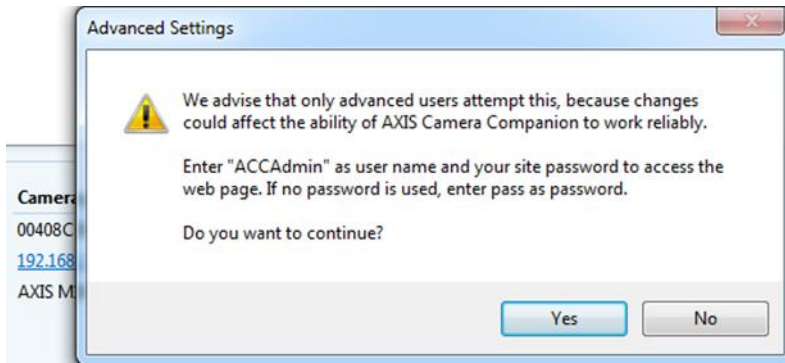
Example: <http://123.123.123.123:8001>

Step 4: Register the camera with AXIS Dynamic DNS Service

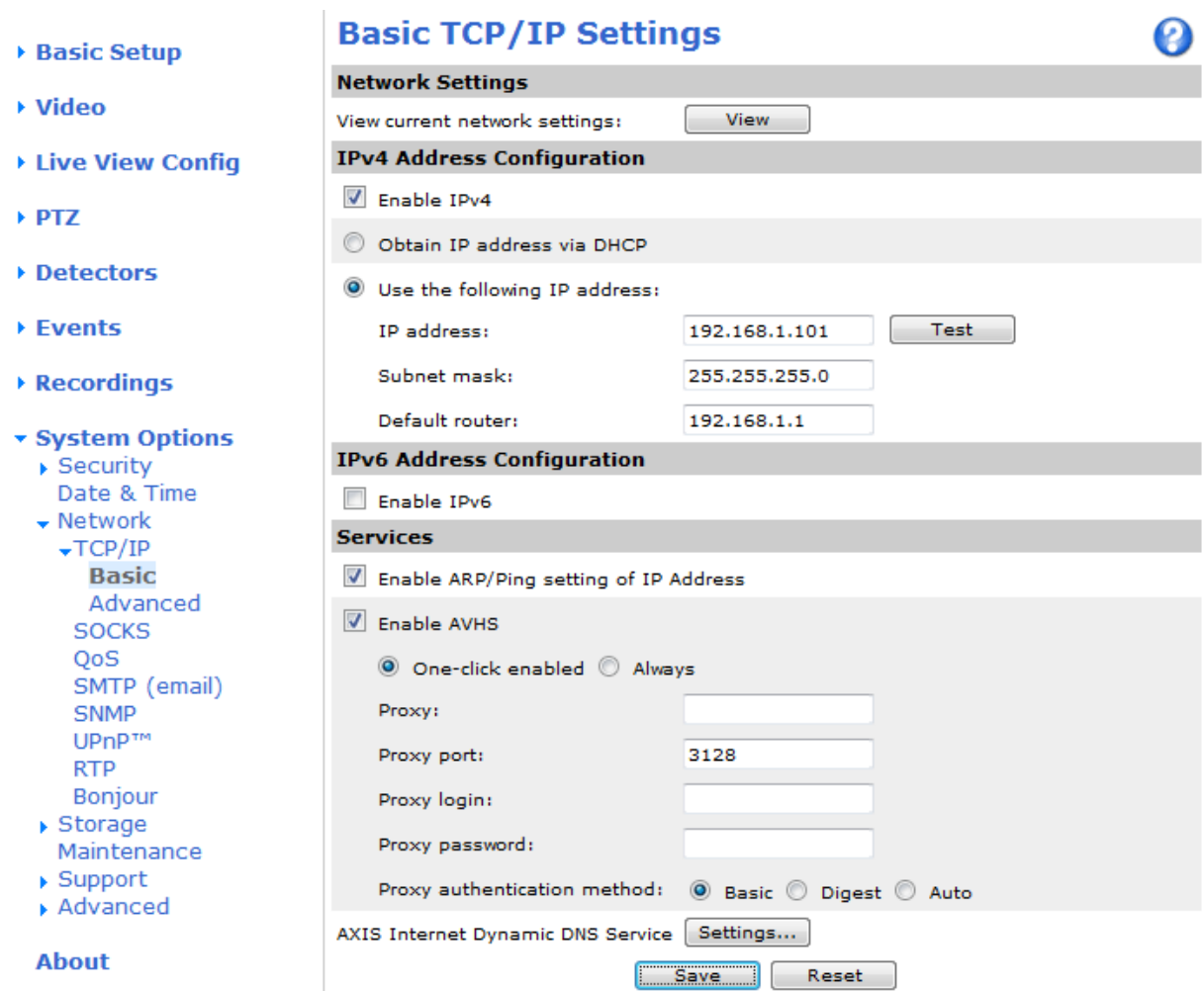
Next we show you how to manually configure your camera with the free AXIS Dynamic DNS service. This service gives your camera an easy to remember host name so that you do not have to keep track of your cameras external IP address every time your ISP changes it.

Important: Please make sure you have followed the steps above to manually configure port forwarding for your camera before you proceed.

Open the AXIS Camera Companion client and click on the Configuration icon in the top left hand corner. In the camera list mark the first camera and then click on the cameras IP address that appears under Camera Properties. If the following prompt appears, click yes and a browser window will open asking you to log in to the camera.

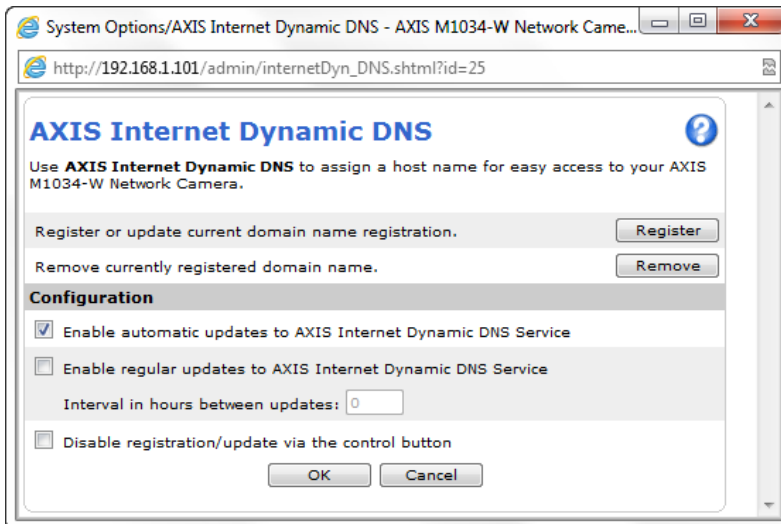


Type in the username “ACCAdmin” and the password that you set for you AXIS Camera Companion site and click OK to enter the Basic Setup page in the camera. To setup Axis dyndns service for the camera click on System options – Network in the left hand menu to enter the Basic TCP/IP setup page.

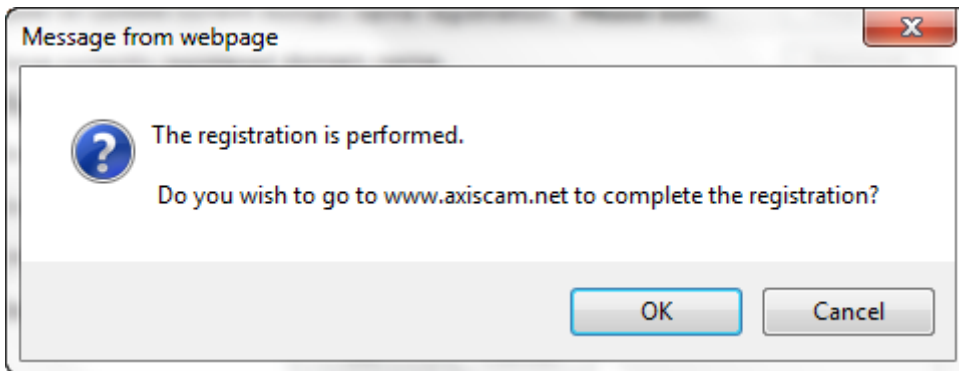


Near the bottom of the page click on Settings next to AXIS Internet Dynamic DNS Service.

In the pop-up window that appears click on Register:



A new window will inform you the registration has been performed. Click on OK to go to the www.axiscam.net website and complete the registration.



At the bottom of the [axiscam.net](http://www.axiscam.net) website make sure the cameras serial number has been entered correctly and click Proceed.

Step 5: Permanently register the camera on [axiscam.net](http://www.axiscam.net)

Enter the serial number of your Axis product
(See label on the underside of the product):

Serial number:

Example: 00408C123456

Read through the **Terms of service** agreement on the next page and click on *I agree* to continue the registration.

Your camera will now be accessible on your local network using the address shown. To enable access to the camera over the internet click on the button *Permanently register my product*.



Please click on the **Permanently register my product** button below if you want to:

1. keep your domain name for permanent use. Currently, your product's domain name will expire in *14 days*.
2. follow guidelines on how to enable access to your product over the Internet.
3. create your own subdomain name for use in accessing your Axis product over the Internet.







Permanently register my product

PLEASE NOTE:

Your Axis product's current IP address is:

**If the domain name does not work when you click on it, please wait a few minutes and then try again. The domain name takes a few minutes from the time you click the button at the back of the product to be operational.*

To permanently register your product enter your MyAxis credentials to login or click the *new user* link to set up a new account.


LANGUAGES:     

AXIS Internet Dynamic DNS Service

Please enter your login information

- If you have previously registered your contact information on Axis' Web site, please use the form below using the same e-mail address and password so that you can permanently register your product's domain name or change the settings for your product.
- If you have not previously registered on Axis' Web site, or have forgotten the e-mail address you registered with, please click on [new user](#).

For users with pre-registered contact details at Axis, please enter:

Your e-mail address or username

Password

Forgot your password? [Click here](#) if you have forgotten your current password and want to set a new one.

New user:
 By registering your information on the Axis Web site, you will have permanent access to your product's domain name, as well as free access to Axis' firmware, software, myCases - Online Helpdesk, newsletters and other personalized Axis services.

Camera IP-address:
 This Axis network camera's internal IP-address is: **192.168.1.101**

Once you have logged in and registration is complete you will see this message:

Your permanent registration has been successful.

You may now do any of the following:



Click [Advanced settings](#)

1. to follow the guidelines on how to enable access to your product over the Internet
2. to create your own subdomain name (i.e. myname.axiscam.net) for accessing your product over the Internet



Access your Axis product using the following domain name: <http://axis-00408cdc138d.axiscam.net>



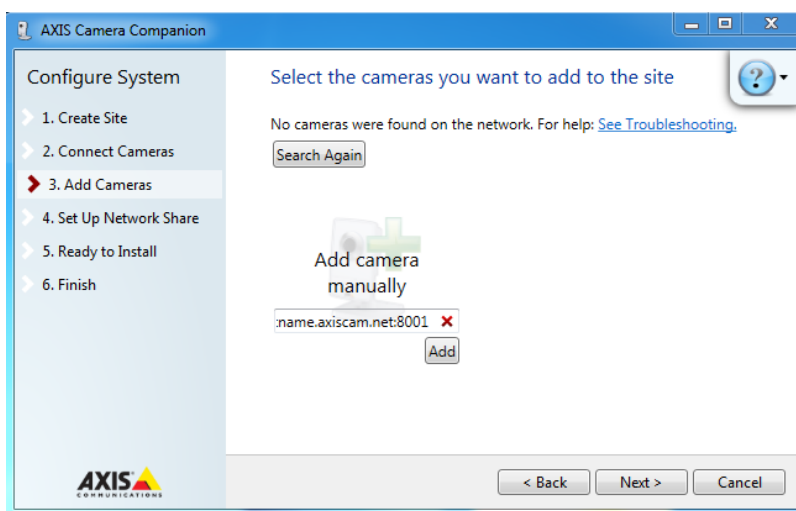
[Exit this service](#)

You can now access your camera using the address shown. Remember to specify your cameras external port number after the address i.e.

<http://mycamerahostname.axiscam.net:8001>

Step 6: Add the camera to AXIS Camera Companion at the remote location

To add cameras to AXIS Camera Companion at the remote location, install and run AXIS Camera Companion. Create a new site using the same site password as before on the local site. In the “Add cameras” step, manually add all cameras using their external IP address followed by the port number that has been assigned to them.



Useful links:

http://en.wikipedia.org/wiki/Port_forwarding

http://en.wikipedia.org/wiki/NAT_traversal

<http://portforward.com/>

http://en.wikipedia.org/wiki/Dynamic_DNS

<http://axiscam.net/>