

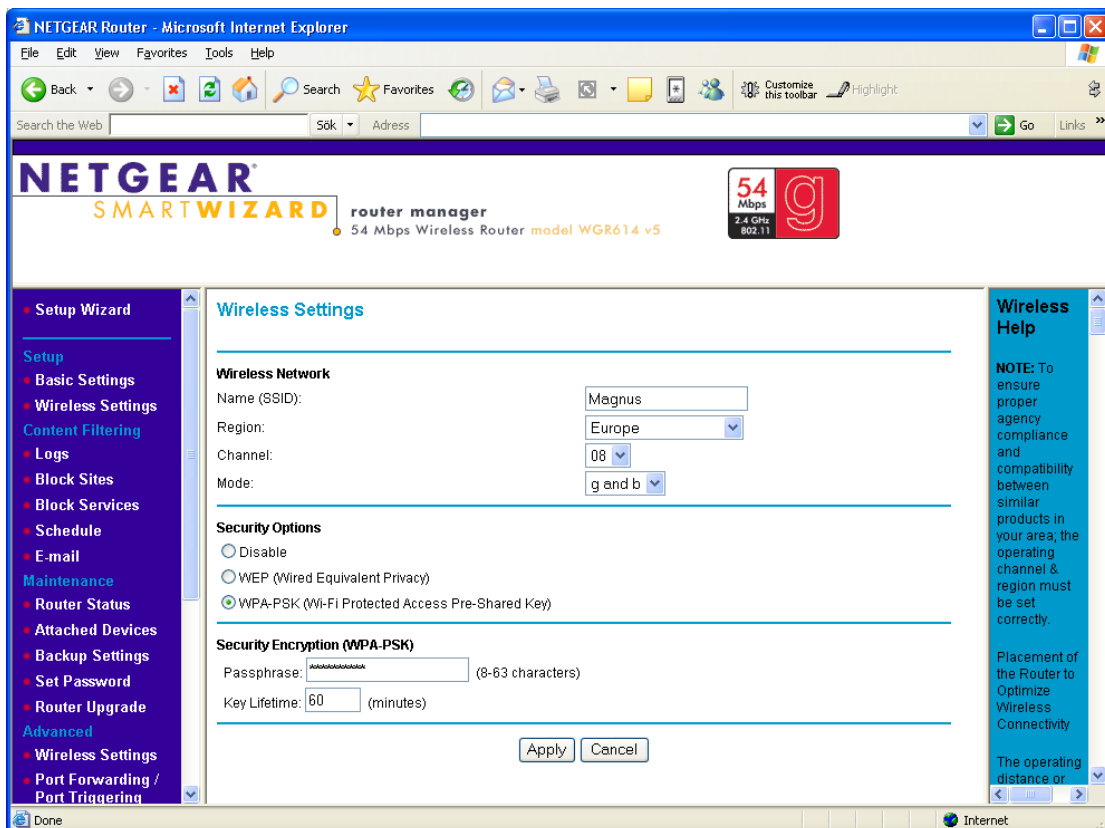
A few things that should help you get the AXIS 207W connected to your network.

It's not always easy to install new products on your network and this document describes some of the things you may need to configure to get your AXIS 207W connected to your Wireless network.

Access Point/ Routers

The AXIS 207W has been tested with a lot of different Access Points and Routers from different manufacturers. If you're having problems with connecting your camera to the network first make sure that the Access Point/ Router you are using is upgraded with the latest Firmware. Also make sure that there are no settings in the Access Point/Router preventing the camera to connect. The best thing is to use the default settings and then add more security features when you know that the connection is working. A few things to control in the Access Point/Router:

1. ESSID
2. MAC address filtering (don't forget to add the camera if used)
3. IP address filtering (don't forget to add the camera if used)
4. Encryption (use the same encryption setting as in the camera)



Picture is taken from the web interface in Netgear WGR 614.

Signal strength

It's important to have good signal strength. In the AXIS 207W web interface you can find info about the signal strength between the Axis 207W and the Access Point/Router:

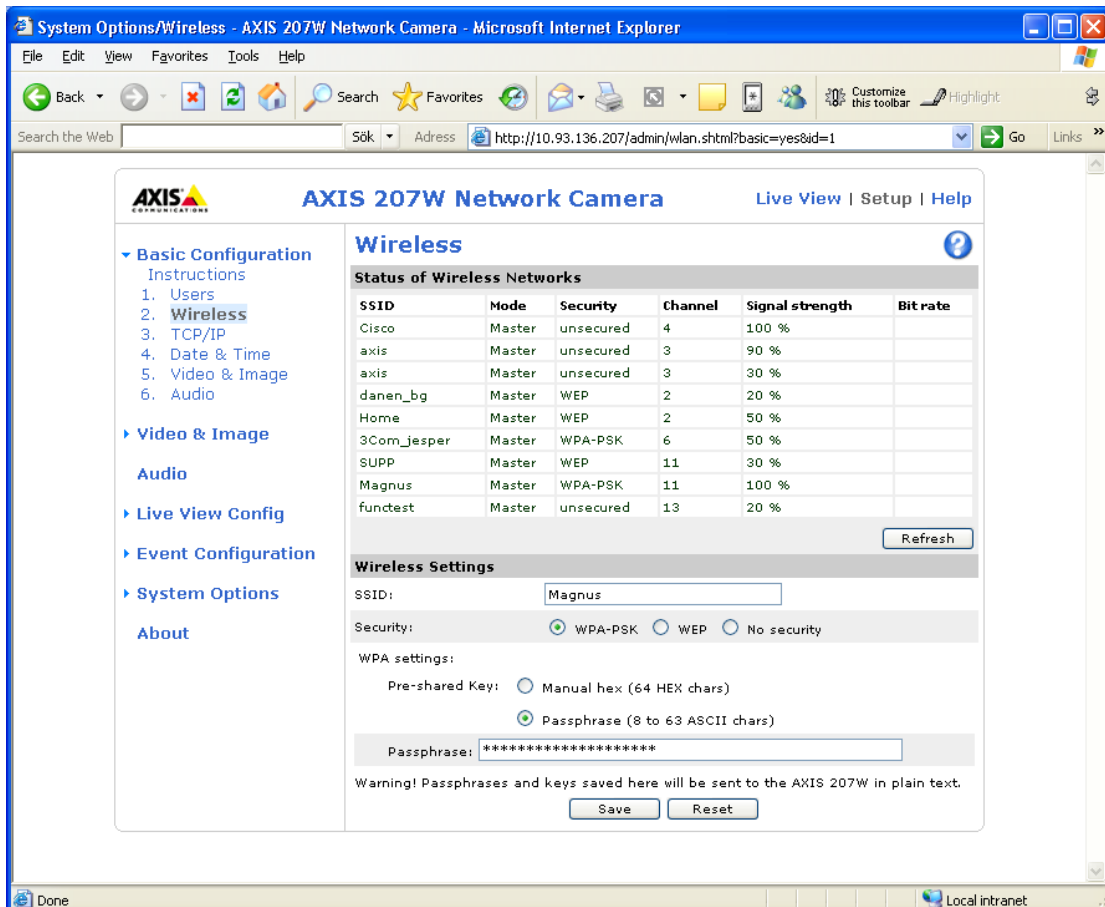
<http://IP-address/admin/wlan.shtml?id=9>

You can see the signal strength to Access Point/Router both if you're connected to the camera Wirelessly or through a network cable. The recommendation is to have signal strength at 70% or above and the minimum should be 50%.

If you would like to get better signal strength there are a few options of what you can do to improve these figures:

1. Move the AXIS 207W closer to the Access Point/Router.
2. Rotate the antennas.
3. Change position of the camera or the Access Point/Router if they are placed behind any obstacle.
4. Change Wireless channel that are used in the Access Points/Router.
5. Turn off other equipment that might interfere the signal

If many Access Points/Routers are placed in the same environment they will interfere with each other if they are using the same or nearby channels. By using channel 1, 6 and 11 you can place the devices in the same area without any interference.



AXIS 207W Network Camera Live View | Setup | Help

Basic Configuration

- Instructions
- 1. Users
- 2. **Wireless**
- 3. TCP/IP
- 4. Date & Time
- 5. Video & Image
- 6. Audio

Video & Image

Audio

Live View Config

Event Configuration

System Options

About

Wireless

Status of Wireless Networks

SSID	Mode	Security	Channel	Signal strength	Bit rate
Cisco	Master	unsecured	4	100 %	
axis	Master	unsecured	3	90 %	
axis	Master	unsecured	3	30 %	
danen_bg	Master	WEP	2	20 %	
Home	Master	WEP	2	50 %	
3Com_jesper	Master	WPA-PSK	6	50 %	
SUPP	Master	WEP	11	30 %	
Magnus	Master	WPA-PSK	11	100 %	
functest	Master	unsecured	13	20 %	

Refresh

Wireless Settings

SSID:

Security: WPA-PSK WEP No security

WPA settings:

Pre-shared Key: Manual hex (64 HEX chars) Passphrase (8 to 63 ASCII chars)

Passphrase:

Warning! Passphrases and keys saved here will be sent to the AXIS 207W in plain text.

Save Reset

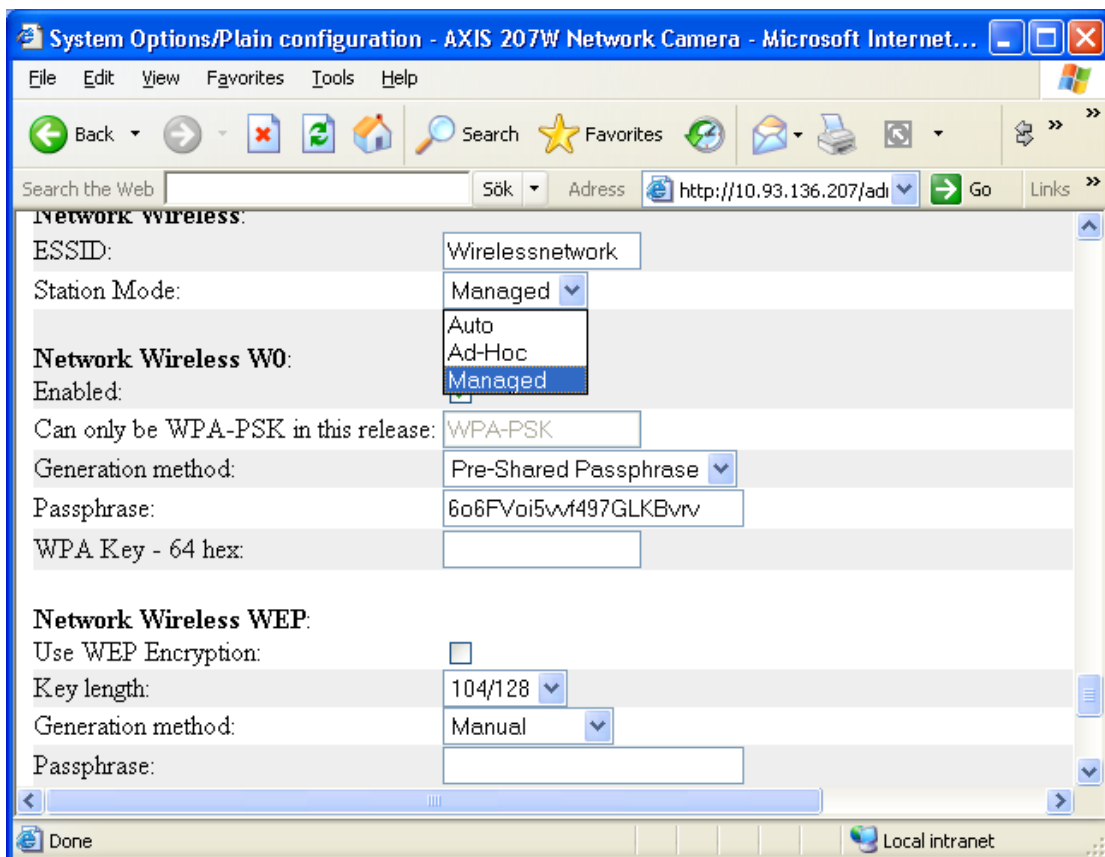
Managed mode/Ad-Hoc mode

The AXIS 207Ws station mode is default configured to Auto, which means that it will connect to both Access Points/Router in managed mode and other devices in Ad-Hoc mode. This means that if you have more wireless equipment such as other wireless cameras or Laptops with the same ESSID as the AXIS 207W, the camera might connect to them instead of the Access Point/Router.

Note: *If the camera is connected to the Access Point/Router and then loses the connection for a short second it might connect to another device on the network in Ad-Hoc mode and the other network devices will then lose the connection to it!*

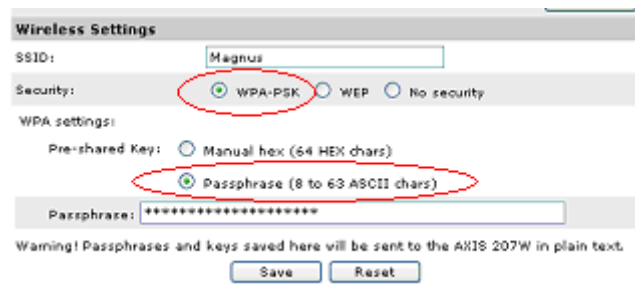
Changing the station mode in the AXIS 207W from Auto to Managed mode can prevent this. Go to Plain Configuration in the web interface and set the correct value and press the save button.

<http://IP-address/admin/config.shtml?group=Network>



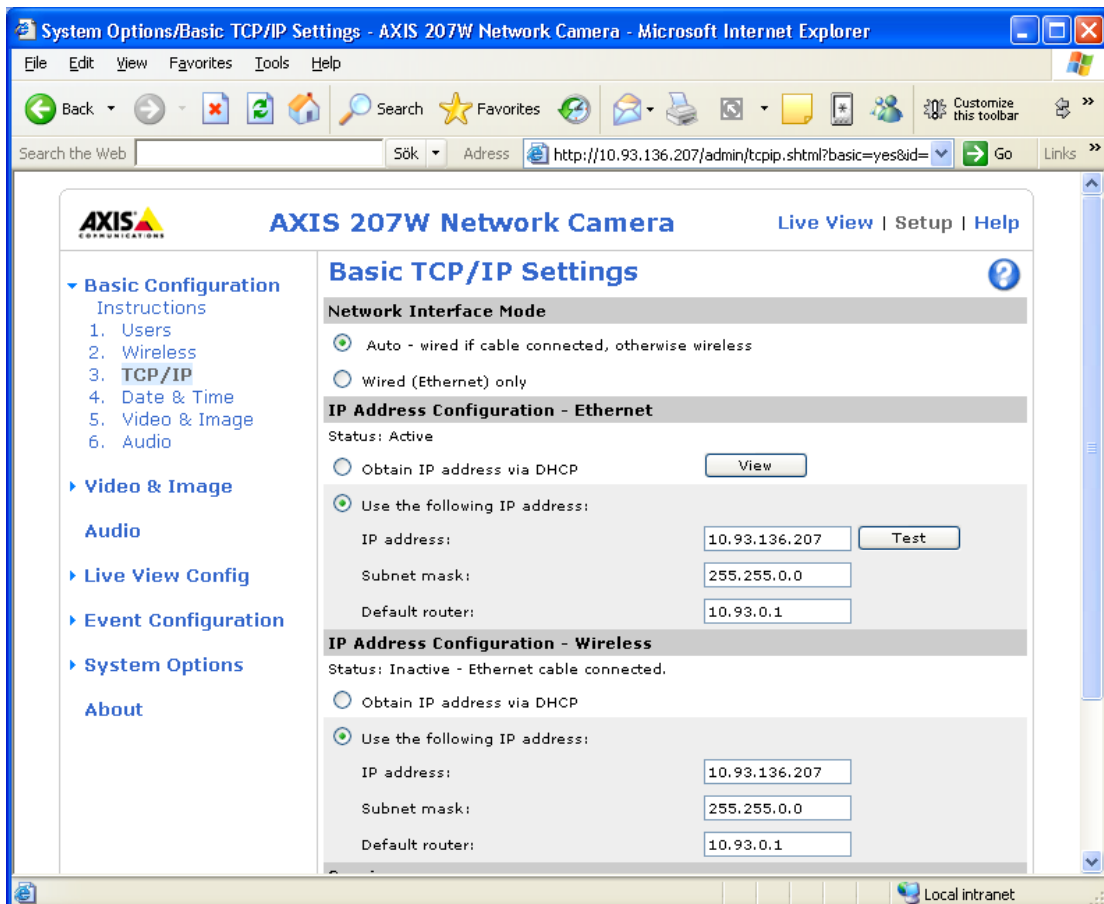
Encryption

It's of course extremely important to set up the same configuration in the AXIS 207W as in the Access Point/Router. If they are not using the same encryption type and key there will be no communication. First select if you would like to use WEP or WPA/WPA2. If WEP is used it's recommended to use open mode since shared key is not secure to use. The best choice would be to use WPA/WPA2 with a Passphrase though since this method is more secure. Use a Passphrase that can't be guessed by anyone and double check that you use the same key in all devices that you would like to connect.



Network settings

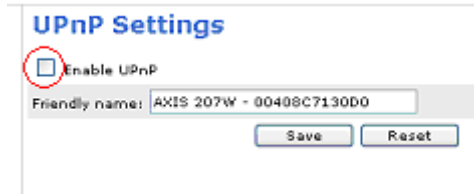
If you're switching between wired and wireless connection it's easier if the IP address configuration is set up with the same IP address in both cases.



UPnP

In some cases UPnP affects the Wireless connection and in these cases it's recommended to switch this feature off. This is done from this page:

<http://IP-address/admin/UPnP.shtml>



UPnP Settings

Enable UPnP

Friendly name: