

Axis plugin for Autodesk® Revit®

Frequently Asked Questions

If you discover any issues with the plugin that is not listed in the FAQ or in the User Guide, please send us an error report using the Report an Issue option within the plugin. Don't forget to add all the necessary information about your issue, including models where you encounter the issue. Please send your report in English.

Axis plugin for Autodesk Revit

Q: What is Axis plugin for Autodesk® Revit®?

A: The Axis plugin adds functionality to Autodesk Revit. Once it has been installed, Revit users have access to an AXIS menu. The plugin contains almost all of Axis product and has some functions to make the simple to work with. This makes it a lot easier to get an impression of what the product will actually "sees".

The Revit users only needs this plugin, the rest is handled by the plugin, for example added, updated, corrected, removed products are automatically updated to the plugin so the user always has the latest updates and offerings.

Support

Q: How can I get support for my use of Axis plugin for Autodesk® Revit®?

A: If the support is regarding the use and functionality of Revit, not the Axis plugin for Revit, it needs to be handled by an Autodesk Revit reseller.

Make sure you have read through the User Guide for Axis plugin in Autodesk Revit, as well as all topics in this FAQ, before contacting Axis. For experienced Revit users, this guide should provide enough information on how to load and use of the Axis plugin for Revit.

Revit license & experiences

Q: Do I need to get a Revit license and have Revit experiences?

A: Yes, you will need a Revit license and Revit experiences. Because the software is complex, requiring substantial training to master.

We recommend that having a Revit license only makes sense for anyone working daily with projects in Revit and have experiences in Revit.

The Revit demo license runs for 30 days without restrictions, and after that it can still be used to open and view Revit projects, to support customers.

BIM (Building Information Modelling)

Q: What is BIM?

A: Building Information Modelling (BIM) is a concept where all components in a building, such as walls, doors, plumbing etc., have BIM information added to the components.

BIM information is not only used in planning and erecting the building, but also throughout the entire lifespan of the building to plan building maintenance and management.

The Axis models within the plugin are BIM compatible models, with full visual functionalities similar to their real-life counterparts.

Axis Camera Families

Q: What is the (polygon) size of Axis Camera Families?

A: Most of the Axis product families are below 1 MB and each family includes all products in a product series and their mounting details. In worst case is slightly above 1 MB per family, for example Axis Q60 series.

Axis product families have been designed to be as lightweight as possible to work smoothly even in large Revit projects.

Product icon with a blue dot

Q: Why does my product icon have a blue dot next to the image?

A: This indicates that the device is newly added/adjusted or hasn't been downloaded to the local folder.

If you're connected to the internet, this will not affect your ability to use this model as it will immediately download from Axis servers and be available for use.

Grey "Place" button

Q: I've selected a product which I would like to add to my project, but the place button is greyed out. Why is that?

A: It's most likely caused by having multiple devices selected, so please use "Clear all filters" and try again, see the User Guide Axis plugin for more information.

New or updated models

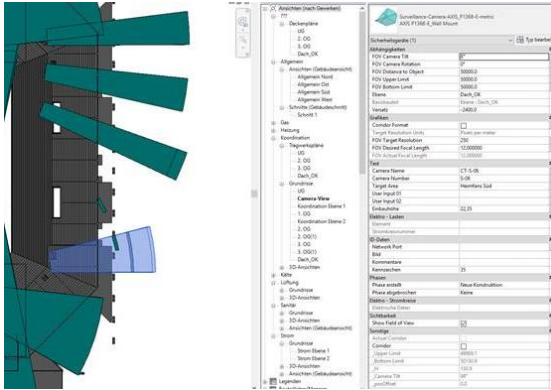
Q: How do I know when a new model is available?

A: We recommend you to run the Update tool inside the plugin to ensure that your Revit plan only include cameras that are still available at our resellers.

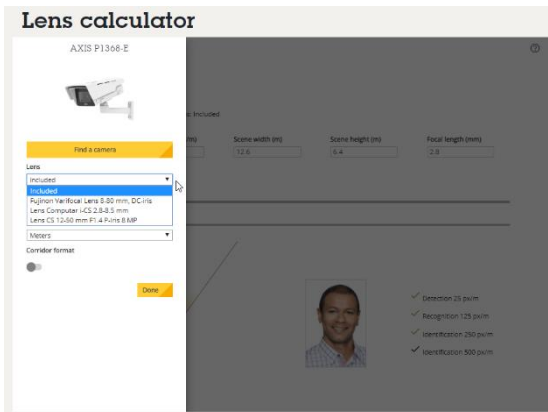
The Product Selector in the plugin will indicate if the existing models are updated with new features or if there are new models available to select.

Accessories on Revit models

Q: I've found an accessory on Axis lens calculator that I want to use in Revit. But when I put in the values for this accessory in Revit something isn't correct. What went wrong? Why is the target area in the entry screen general not shown correctly?

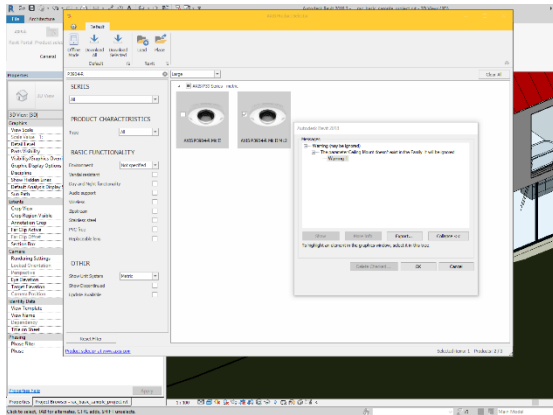


A: The Revit plugin isn't supporting accessories from the accessory selector and therefore not other lens then the "included" lens in the lens calculator.



Error message loading model into project

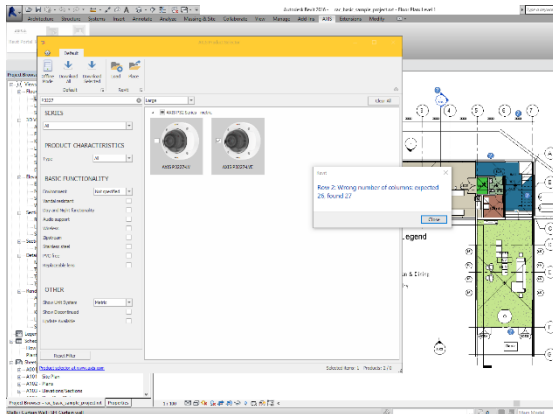
- Q:** When loading the model into the project, after choosing mount, I get this error message: "Autodesk Revit 2018. Warning - can be ignored. The parameter Ceiling Mount doesn't exist in the Family. It will be ignored.". What is the problem?



- A:** If you encounter an issue like that, please send us an error report using the Report an Issue option within the plugin. Don't forget to add all the necessary information about your issue, including models where you encounter the issue. Please send your report in English.

Error message after choosing mount

- Q:** When loading the model into the project, after choosing mount, I get this error message: "Revit 2: Wrong number of columns: expected 26, found 27". What is the problem?



- A:** If you encounter an issue like that, please send us an error report using the Report an Issue option within the plugin. Don't forget to add all the necessary information about your issue, including models where you encounter the issue. Please send your report in English.

Product properties

Q: Which parameters are listed in RFA file/model for our cameras? Information like resolution, power consumption and dimensions.

4.1.2 Camera Properties

The following camera properties are available for use inside the families.

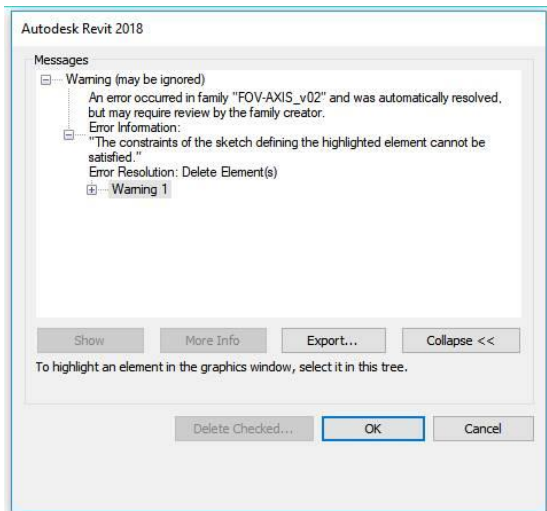
Properties	
Surveillance-Camera-AXIS_Q3515-LVE_9mm-Imperial AXIS Q3515-LVE 9mm_Wall Mount	
Security Devices (1) Edit Type	
Constraints	
FOV Tilt	28.00°
FOV Pan	-25.00°
FOV Distance to Object	40' 0"
FOV Upper Limit	0' 11 13/16"
FOV Bottom Limit	14' 0"
Level	01 - Entry Level
Host	Floor : Standard Timber-W...
Offset	14' 0"
Graphics	
Corridor Format	<input type="checkbox"/>
Target Resolution Units	Pixels per foot
FOV Target Resolution	60
FOV Desired Focal Length	6.000000
FOV Actual Focal Length	6.000000
Text	
Camera Name	Front Entrance Camera
Camera Number	Camera 12
Target Area	Exterior Lobby
User Input 01	
User Input 02	
Electrical - Loads	
Dimensions	
Identity Data	
Phasing	
Electrical - Circuiting	
Visibility	
Show Field of View	<input checked="" type="checkbox"/>
Other	
Actual Corridor	<input type="checkbox"/>
Corridor	<input checked="" type="checkbox"/>
_Upper Limit	1' 7 95/256"
_Bottom Limit	13' 4 113/256"
_posOffset	0' 4 1/64"
_negOffset	0' 0"
_Origin Vertical	0' 4 1/64"

- Change the tilt (up-down) of the camera
- Change the Pan (left-right) of the camera
- Choose distance to show Field-of-View from camera
- Used to set the FoV to the bottom limit of the desired scene
- Change the Field-of-View to Corridor Format (9:16)
- Choose the reflected PPM/PPF in the Field-of-view
- Choose the desired focal length of the camera (mm)
- Camera Name – User-definable field
- Camera Number – User-definable field
- Target Name – User-definable field
- User-definable Input 01
- User-definable Input 02
- Turns the Field-of-View projection on or off

A: To find that information who you're asking about you need to click on the "Edit type" button in the upper right corner, as the image to the right illustrated (top), see the User Guide Axis plugin for more information.

Error message

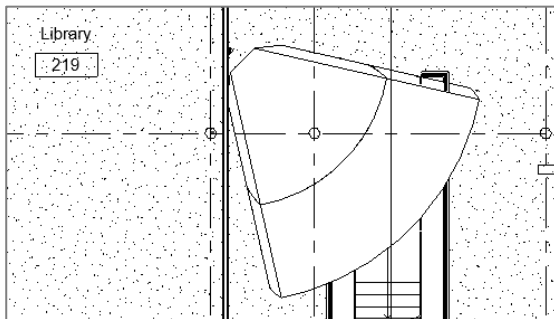
Q: When I set the FoV parameter to 110mm I get this error messages. What is the problem?



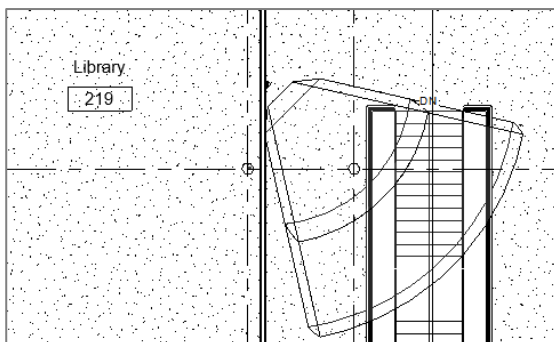
A: If you encounter an issue like that, please send us an error report using the Report an Issue option within the plugin. Don't forget to add all the necessary information about your issue, including models where you encounter the issue. Please send your report in English.

FoV blocking building attributes

Q: Behind the FoV (Field of View) there are some building attributes that needs to be seen through the FOV, can it be adjusted?



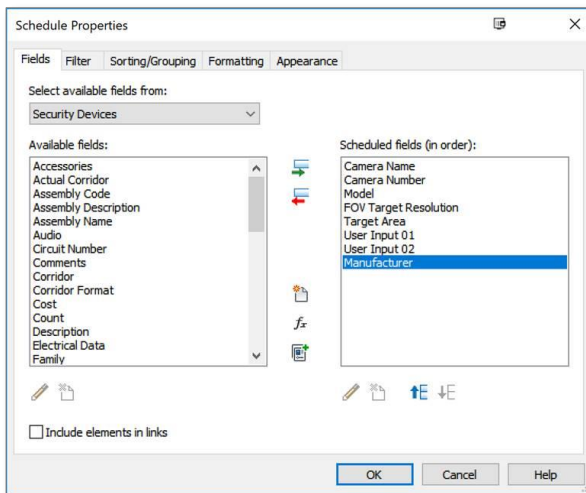
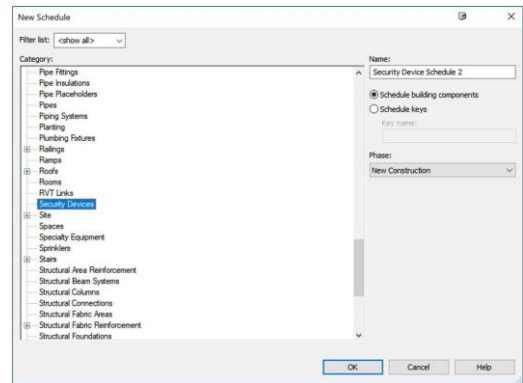
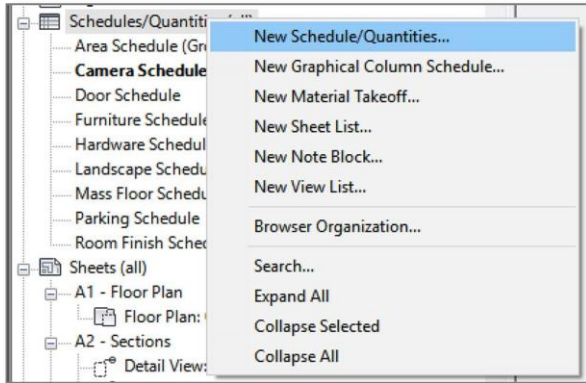
A: The FoV (Field of View) for current Axis families aren't transparent and hides the building attributes behind the FoV coverage. To visualize the camera's actual field of view, considering objects that might affect the coverage area, we recommend you to use the Collision Detection feature inside the plugin. Read more about this feature in the latest version of the User guide for the Axis plugin.



Exporting objects and parameters

Q: Can we export camera objects and associated parameters from the model into a CSV-file?

A: Yes, this can be accomplished by creating a Security Device schedule:



Sample output:

<Security Device Schedule 2>							
A	B	C	D	E	F	G	H
Camera Name	Camera Number	Model	FOV Target Resolu	Target Area	User Input 01	User Input 02	Manufacturer
		AXIS P3384-V	80				Axis Communications AB
		AXIS P1405-LE	60				Axis Communications AB
1st Floor East	Camera 06	AXIS Q3505-VE 22mm	60	Ground Exit			Axis Communications AB
		AXIS P3215-V	60				Axis Communications AB
		AXIS P1355-E	80				Axis Communications AB
		AXIS Q6045-E	40				Axis Communications AB
		AXIS P3364-LV 12mm	60				Axis Communications AB
		AXIS P3707-FE	180				Axis Communications AB
Lobby Entrance	Camera 03	AXIS P3215-V	60	Interior Lobby			Axis Communications AB
		AXIS P3227-LV	80				Axis Communications AB
		AXIS P3215-V	80				Axis Communications AB
		AXIS P3214-V	60				Axis Communications AB
		AXIS Q1615	80				Axis Communications AB
		AXIS M3014	60				Axis Communications AB
		AXIS P1425-LE	60				Axis Communications AB
		AXIS P1425-LE	60				Axis Communications AB
		AXIS M3014	60				Axis Communications AB
2nd Floor Stair - Up	Camera 04	AXIS P3365-VE	60	Top of Stairs			Axis Communications AB
3rd Floor Open Area	Camera 07	AXIS P3365-V	60	3rd Floor	Mount on Wall		Axis Communications AB
SW Corner Roof	Camera 01	AXIS Q6045-E Mk II 60 Hz	60	West Building			Axis Communications AB
Stair 114	Camera 08	AXIS P3224-V Mk II	60	Stairs			Axis Communications AB

Once the chart is formed to meet the requirements, go to **File > Export > Reports > Schedule** and follow the prompts.

