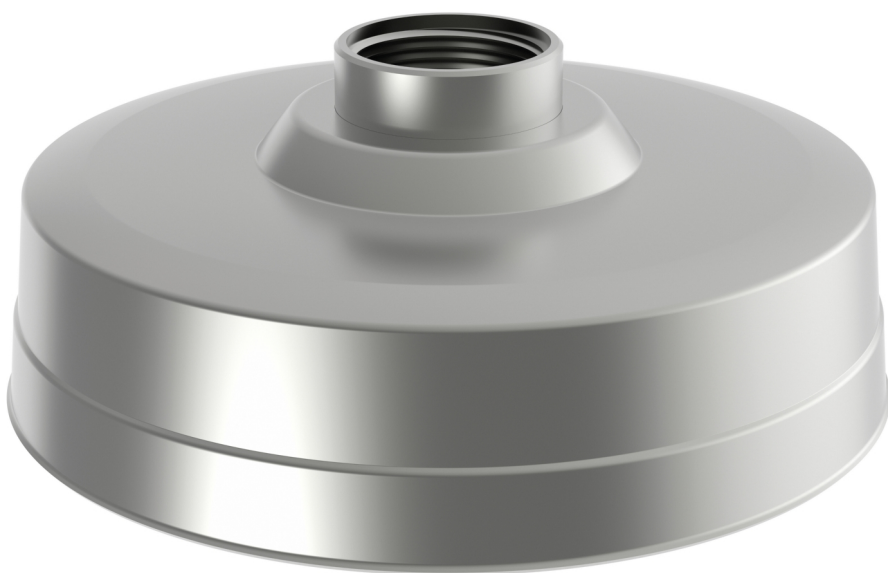


AXIS T94U02D Pendant Kit

Made in marine-grade stainless steel

AXIS T94U02D Pendant Kit is specially designed using marine-grade, electropolished and coated stainless steel (SS 316L) material. Thanks to its protective design with weather shield, its impact-resistant and proven, outdoor-ready material, the pendant mount is best suited for outdoor environments. It offers high corrosion resistance against salt water and chemicals. The mount is ideal for stainless steel fixed dome cameras.

- > [Marine-grade stainless steel \(SS 316L\)](#)
- > [High corrosion resistance against salt water and chemicals](#)
- > [Outdoor pendant mounting](#)
- > [Suitable for stainless steel fixed domes cameras](#)



AXIS T94U02D Pendant Kit

General

Supported products	AXIS Q3505-SVE Mk II
Casing	Coated electropolished stainless steel (V4A, SAE 316L/UNS S31603/EN 1.4404)
Dimensions	219 x 219 x 87 mm (8.7 x 8.7 x 8.7 in)
Weight	1.1 kg (2.5 lb)
Environment	Indoor Outdoor
Approvals	IEC/EN/UL 60950-1 IEC/EN/UL 60950-22 EN 50581 NEMA 250 Type 4X

IEC 62262 IK10+
IEC 60068-2-6 (Sinus)
IEC 60068-2-27 (Shock)
MIL-STD 810G 509.5
EN-ISO 12944 C4H (coating)

Included accessories	Installation Guide Stainless steel screws
Optional accessories	AXIS T91F61 Wall Mount
Warranty	Axis 3-year warranty, see www.axis.com/warranty

Environmental responsibility:

www.axis.com/environmental-responsibility