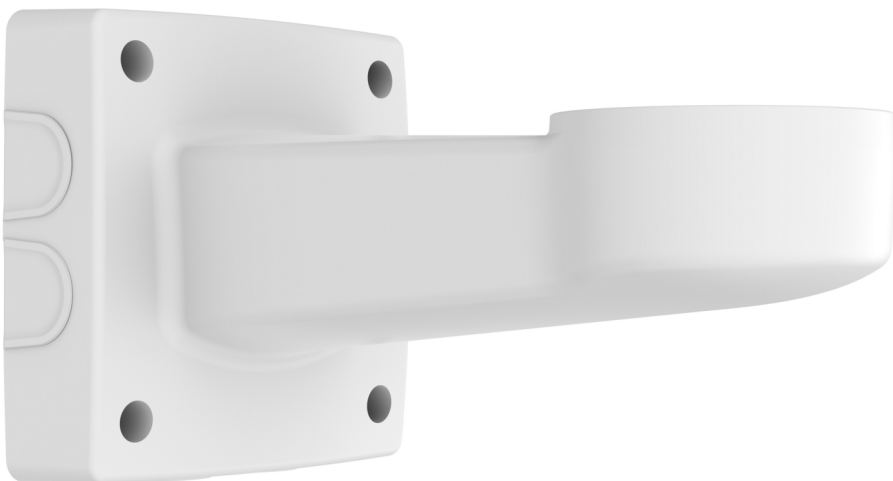


AXIS T94J01A Wall Mount

Robust design with cable protection

AXIS T94J01A is an aluminum wall mount suitable for Axis positioning cameras and positioning units. It is compatible with Axis ACI 3/4" conduit adapters, and offers six cable entries. Cables can be routed through the back or, by using a conduit connection, from each side or from the bottom.

- > For indoor and outdoor use
- > Impact-resistant (IK10)
- > Robust and safe
- > Suitable for Axis positioning cameras and positioning units



AXIS T94J01A Wall Mount

General		Weight	4.5 kg (9.9 lb)
Supported products	AXIS Q8685-E/-LE PTZ Network Cameras AXIS Q8641-E/Q8642-E PT Thermal Network Cameras AXIS T99A Positioning Units	Maximum load	20 kg (44 lb)
Casing	Powder coated aluminum Color: White NCS S 1002-B	Cable routing	Back: cable hole Bottom, sides: 3/4" Conduit entrance
Sustainability	PVC free	Included accessories	Installation Guide
Environment	Indoor Outdoor	Optional accessories	AXIS T94N01G Pole Mount AXIS T95A64 Corner Bracket AXIS ACI Conduit Adapter 3/4" NPS AXIS ACI Conduit Adapter 3/4" U-Shape 30 mm (1 in) For more accessories, see www.axis.com
Storage conditions	-45 °C to 70 °C (-49 °F to 158 °F)	Warranty	Axis 3-year warranty, see www.axis.com/warranty
Approvals	Safety IEC/EN/UL 62368-1, IEC/EN/UL 60950-22 Environment NEMA 250 Type 4x, IEC 62262 IK10, RoHS, REACH, WEEE	Environmental responsibility: axis.com/environmental-responsibility	
Dimensions	394 x 222 x 217 mm (15.5 x 8.7 x 8.5 in)		