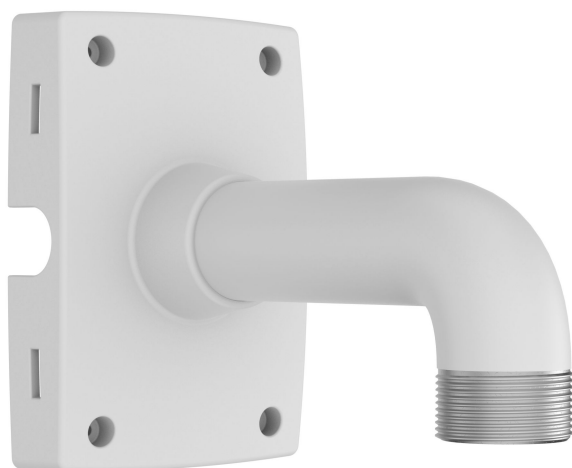


AXIS T91D67 Pole Mount

For fixed dome cameras

AXIS T91D67 Pole Mount is suitable for all Axis fixed dome cameras compatible with 1.5" NPS threaded Axis pendant kits. Thanks to its impact-resistant and outdoor-proven material, the mount can be used in both indoor and outdoor environments. AXIS T91D67 is intended for poles between 60–400 mm (2.4–15.7 in) in diameter, and also for beams. It features a closed back and a cable gasket for protection against insect infestation.

- > **Robust and safe pole installation**
- > **Suitable for indoor and outdoor use**
- > **Impact-resistant to prevent vandalism**
- > **Cable gasket to prevent insect infestation**
- > **Support for 1.5" NPS threaded Axis pendant kits**



AXIS T91D67 Pole Mount

General	
Supported products	Axis fixed dome cameras compatible with 1.5" NPS threaded Axis pendant kits
Casing	Material: powder-coated aluminum casing Color: white NCS S 1002-B Interface: 1.5" NPS
Sustainability	PVC free
Dimensions	252 x 134 x 194 mm (9.9 x 5.3 x 7.6 in)
Weight	1.2 kg (2.6 lb)
Maximum load	15 kg (33 lb)
Cable routing	Back: cable hole Sides: 3/4" Conduit entrance
Environment	Indoor Outdoor
Approvals	Safety IEC/EN/UL 60950-1, IEC/EN/UL 60950-22
	Environment IEC 60721, IEC 60721-4 Class 4M3, MIL-STD 810G 509.5, NEMA 250 Type 4X, RoHS, WEEE Impact IEC 62262 IK10
Included accessories	Installation Guide Stainless steel straps 1450 mm (57 in), 1 pair Insect-proof cable gasket
Required accessories	1.5" NPS threaded Axis pendant kit
Optional accessories	Stainless steel straps 700 mm (28 in), 1 pair
Warranty	Axis 3-year warranty, see www.axis.com/warranty

Environmental responsibility:
www.axis.com/environmental-responsibility