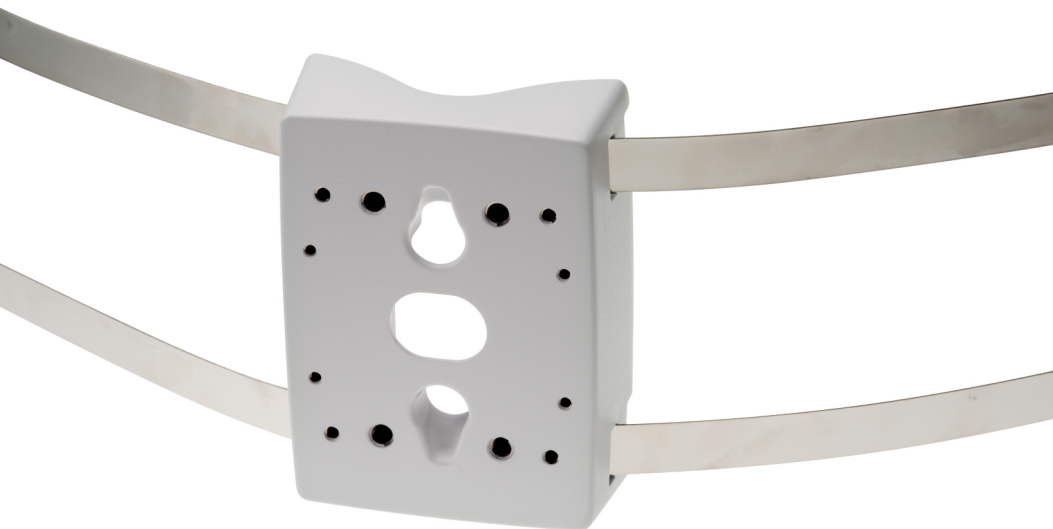


AXIS T91A47 Pole Mount

For small and large poles

AXIS T91A47 Pole Mount is designed for both indoor and outdoor use. It is available in two versions, one with steel straps for poles between 60–110 mm (2 3/8–4 5/16 in) in diameter and one with steel straps for poles between 110–400 mm (4 5/16–15 3/4 in) in diameter. Additionally, it can be used for attaching cameras to beams. When AXIS T91A47 is used for a fixed dome camera, no additional accessories such as pendant kits is required, ensuring a cost-efficient solution.

- > **Indoor and outdoor**
- > **Robust and safe installation**
- > **Ease of installation**
- > **Vandal resistance with IK10**
- > **Corrosion protected**



AXIS T91A47 Pole Mount

Models	AXIS T91A47 Pole Mount 60–110 mm AXIS T91A47 Pole Mount 110–400 mm	EN 50581 IEC 62262 IK10 NEMA 250 Type 4X ^a										
General												
Supported products	AXIS M11-E cameras AXIS P13-E cameras AXIS Q16-E cameras AXIS Q17-E cameras AXIS Q19-E cameras AXIS M30 Series (except for AXIS M3004/M3005) AXIS P32 Series Outdoor cameras of AXIS P33 Series AXIS Q35 Series AXIS Q36 Series AXIS T92E Series, AXIS T93E05, AXIS T93F Series, AXIS T93G05	<table border="1"> <tr> <td>Dimensions</td> <td>111 x 42 x 147 mm (4 3/8 x 1 5/8 x 5 13/16 in)</td> </tr> <tr> <td>Weight</td> <td>0.3 kg (0.7 lb) without steel straps</td> </tr> <tr> <td>Included accessories</td> <td>Installation Guide Cable ties, Screws AXIS T91A47 60–110 mm (2 3/8–4 5/16 in): Steel straps 700 mm (28 in) AXIS T91A47 110–400 mm (4 5/16–15 3/4 in): Steel straps 1450 mm (57 in)</td> </tr> <tr> <td>Required accessories</td> <td>Mounting tool for pole bracket straps</td> </tr> <tr> <td>Warranty</td> <td>Axis 3-year warranty, see www.axis.com/warranty</td> </tr> </table> <p>a. <i>Corrosion protected only</i></p> <p>Environmental responsibility: www.axis.com/environmental-responsibility</p>	Dimensions	111 x 42 x 147 mm (4 3/8 x 1 5/8 x 5 13/16 in)	Weight	0.3 kg (0.7 lb) without steel straps	Included accessories	Installation Guide Cable ties, Screws AXIS T91A47 60–110 mm (2 3/8–4 5/16 in): Steel straps 700 mm (28 in) AXIS T91A47 110–400 mm (4 5/16–15 3/4 in): Steel straps 1450 mm (57 in)	Required accessories	Mounting tool for pole bracket straps	Warranty	Axis 3-year warranty, see www.axis.com/warranty
Dimensions	111 x 42 x 147 mm (4 3/8 x 1 5/8 x 5 13/16 in)											
Weight	0.3 kg (0.7 lb) without steel straps											
Included accessories	Installation Guide Cable ties, Screws AXIS T91A47 60–110 mm (2 3/8–4 5/16 in): Steel straps 700 mm (28 in) AXIS T91A47 110–400 mm (4 5/16–15 3/4 in): Steel straps 1450 mm (57 in)											
Required accessories	Mounting tool for pole bracket straps											
Warranty	Axis 3-year warranty, see www.axis.com/warranty											
Maximum load	15 kg (33 lb)											
Cable routing	Back: Cable hole Side: U-shape cable hole (26 mm/1 in)											
Environment	Indoor Outdoor											
Approvals	IEC/EN/UL 60950-1 IEC/EN/UL 60950-22											