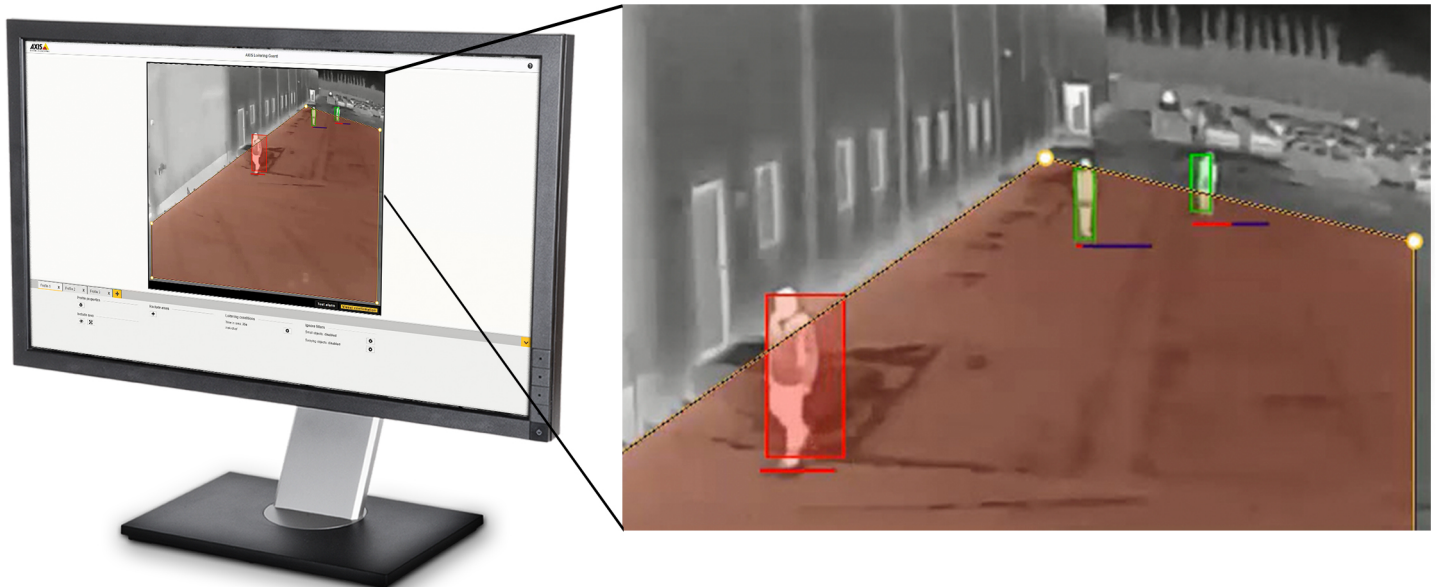


# AXIS Loitering Guard

## For detecting loiterers

AXIS Loitering Guard tracks moving objects such as people and vehicles, and triggers an alarm if they have been in a predefined area for too long. The application is ideal for detecting loiterers, particularly during after business hours, on semi-public properties such as office parking lots, school yards, and areas near fences. It can help prevent crime such as vandalism and break-ins. The application supports multiple profiles for different loitering conditions. Exclude areas, filters, and perspective configuration help reduce false alarms. Alarm overlays in live or recorded video highlight the object or area that is triggering the alarm.

- > **Motion- and time-based triggers**
- > **Edge-based video analytics**
- > **Multiple conditions and profiles**
- > **Perspective tool for fewer false alarms**
- > **Bounding box alarm overlay**



# AXIS Loitering Guard

## General

<b>Typical use cases</b>	General low-traffic areas where loitering might pose a security issue, such as parking lots, school yards, and fenced-off areas
<b>Supported devices</b>	Axis video products with firmware 7.10 or higher.
<b>Compute platform</b>	Edge
<b>Configuration</b>	Web configuration included
<b>Languages</b>	English, German, French, Polish, Spanish, Italian, Russian, Simplified Chinese, Traditional Chinese, Japanese, Korean, Portuguese

## Capabilities

<b>Scenarios</b>	Multiple profiles can be configured to adapt for different scenarios. Up to 10 profiles for all cameras except multichannel products which have up to 3 concurrent profiles. One include area and 3 exclude areas per profile (10-point polygons) Visual confirmation to verify setup Filters for small or swaying objects Perspective configuration
<b>Trigger conditions</b>	One loitering condition per profile. <b>Individual:</b> tracks the time of each moving object detected in a predefined area <b>Group:</b> tracks the time when there is any moving objects in a predefined area
<b>Limitations</b>	Conditions such as heavy rain, snow, or low contrast, might affect detection accuracy. For more information, see the user manual at <a href="http://axis.com">axis.com</a> . The resolution of video streams with alarm overlay enabled is limited to 1920 pixels in width and the corresponding height for the current aspect ratio.

## System integration

<b>Application Programming Interface</b>	Open API for software integration, including VAPIX® and AXIS Camera Application Platform; specifications at <a href="http://axis.com">axis.com</a>
<b>Event management</b>	Integrates with the camera to enable event streaming to a video management system (VMS) and event actions such as I/O control, notification, and edge storage. ONVIF® motion alarm event (Ref: ONVIF Service Imaging Specification)
<b>Metadata</b>	Alarm overlay in one selected video resolution. In individual mode, overlay displays bounding boxes around alarm-triggering objects. In group mode, overlay highlights include area.

Environmental responsibility:

[axis.com/environmental-responsibility](http://axis.com/environmental-responsibility)