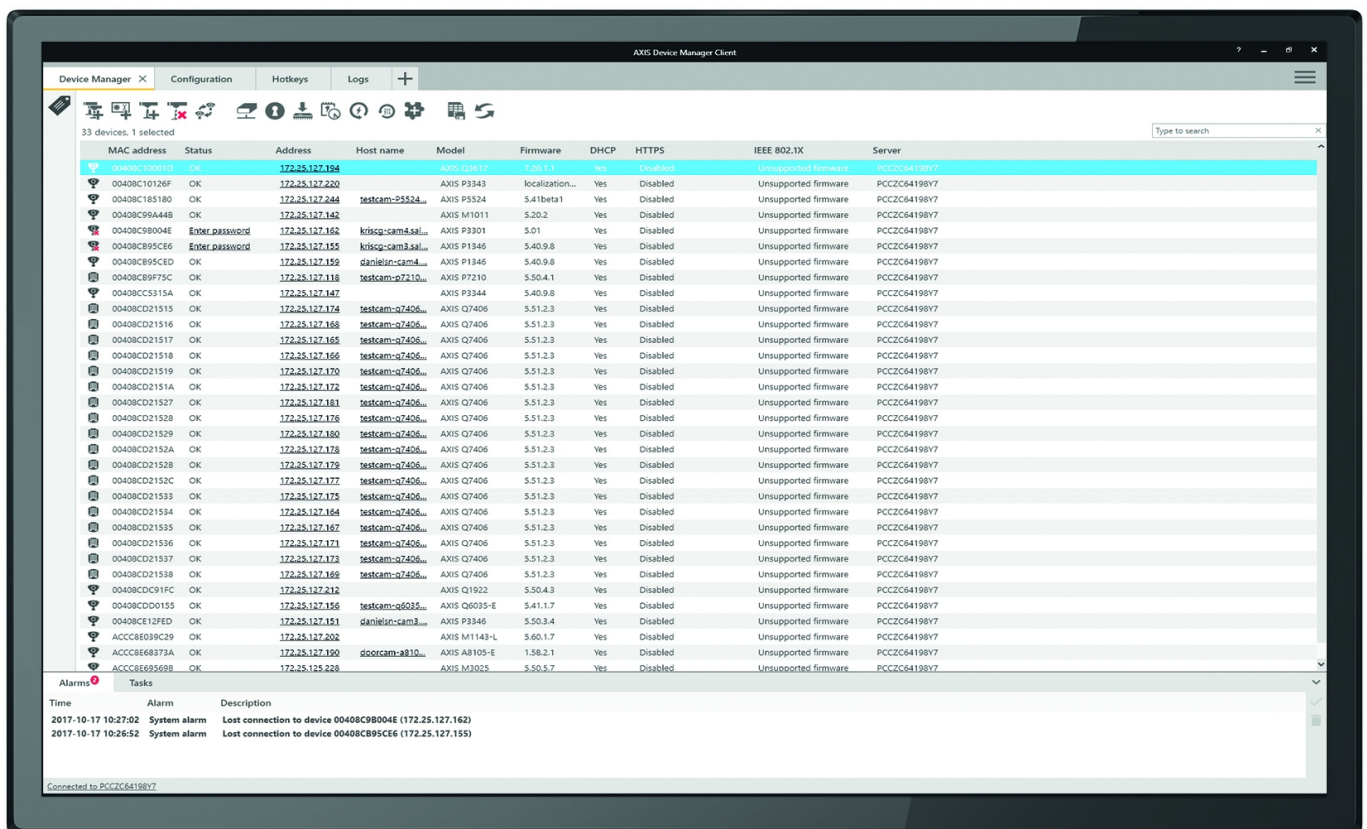


# AXIS Device Manager

Easy, cost-effective and secure management of Axis devices

AXIS Device Manager is an on-premise tool that delivers easy, cost-effective device management. It is suitable for managing up to a couple thousand Axis devices on one site – or several thousand devices in a multiple site solution. Install, configure, replace and upgrade any single device, as well as copy configurations between thousands of devices automatically. Apply improved security controls to mitigate security threats by managing HTTPS or 802.1x certificates and update accounts and passwords. AXIS Device Manager enables users to manage all major installation, security and maintenance tasks for the majority of Axis network cameras, access-control and audio devices.

- > Manage all major installation, security and maintenance tasks — all major Axis devices
- > Suitable for site installations of all sizes
- > Proactively manage cybersecurity
- > Fast and easy configuration of new devices — backup and restore settings
- > Efficient installation of firmware upgrades and applications



# Technical Specifications - AXIS Device Manager

## Compatible products

<b>Models</b>	Axis network products: Axis network cameras and encoders, Pan Tilt Zoom and thermal cameras with firmware 4.40 or later. Audio system products Network door controllers Network door stations Network I/O relay modules Network switches
---------------	--

## Device management features

<b>Assign IP address</b>	Assign an IP address to any device or range of devices.
<b>Export device list and keep track of assets</b>	Export device list as a CSV file.
<b>User and password management</b>	Manage user accounts and set passwords.
<b>ACAP management</b>	Support for AXIS Camera Application Platform. Installation of Axis-compatible applications, including license files to multiple devices.
<b>Upgrade firmware</b>	Upgrade multiple devices sequentially or in parallel. Automatic download of latest available firmware from Axis.
<b>HTTPS certificate management</b>	Deploy HTTPS certificates on devices. Renew HTTPS certificates. Management of HTTPS certificates requires 5.70 firmware version or higher.
<b>IEEE 802.1x certificate management</b>	Manage IEEE 802.1x certificates on devices. Management of IEEE 802.1x certificates requires 5.50 firmware version or higher.
<b>Device tagging</b>	User-defined tags for improved operational efficiency.
<b>Device status</b>	Device status monitoring indicating accessible devices.
<b>Collect device data</b>	Send HTTP requests to devices and get results for each device in one zip file.
<b>Configure devices and copy configurations to multiple devices</b>	Configure standard parameters to several devices, including action rules, stream profiles, device time and IP settings. Duplicate configurations from already configured devices to multiple devices.

## Device management features

<b>Connect to multiple servers/systems</b>	The AXIS Device Manager client can simultaneously connect to multiple servers or systems.
<b>Restore points</b>	Backup and restore device settings.
<b>Restore factory default settings</b>	Set device setting back to factory default.
<b>Replace device</b>	Replace a broken device with a new one and import existing settings to the new device.
<b>Cybersecurity hardening</b>	Harden your devices according to Axis hardening guide.

## General

<b>Logging</b>	Activity log with sort and search functions showing performed actions and changed device status.
<b>Capacity</b>	One site installations: suitable for managing up to a couple thousand Axis devices. Multiple site installations: suitable for managing up to several thousand Axis devices.
<b>Languages</b>	Arabic, Czech, Chinese (Simplified), Chinese (Traditional), Dutch, English, Finnish, French, German, Italian, Japanese, Korean, Persian, Polish, Portuguese (Brazil), Russian, Spanish, Swedish, Thai, Turkish, Vietnamese
<b>Minimum system requirements</b>	Intel i5 or equivalent AMD RAM: 4GB (8 GB recommended for larger systems) Operating system: 64-bit operating system
<b>System recommendations</b>	For a list of all supported operating systems, see the release notes available on <a href="http://www.axis.com/techsup">www.axis.com/techsup</a> Always use the latest service packs. Microsoft .NET runtime environment (included in installation package).