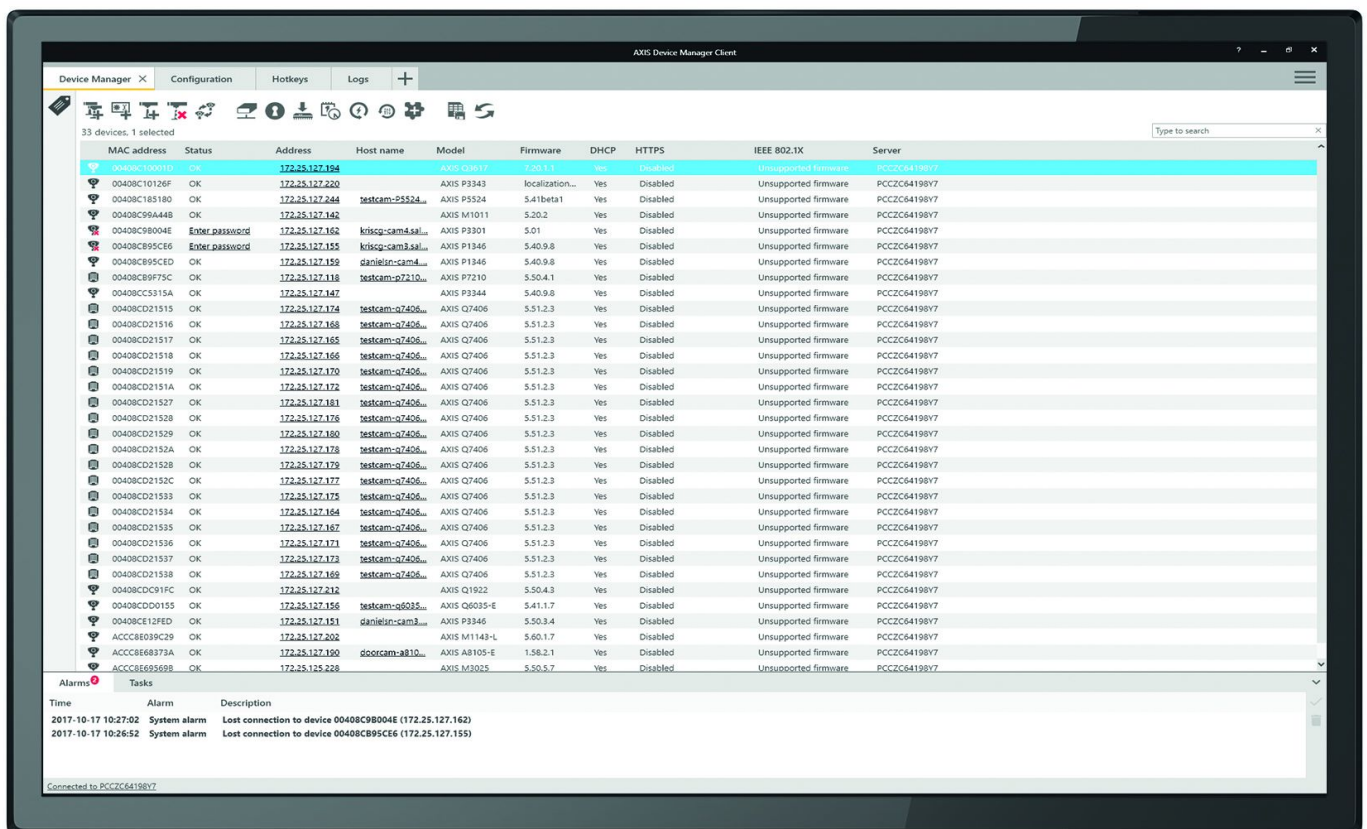


AXIS Device Manager

Easy, cost-effective and secure management of Axis devices

AXIS Device Manager is an on-premise tool that delivers easy, cost-effective device management. It is suitable for managing up to a couple thousand Axis devices on one site – or several thousand devices in a multiple site solution. Install, configure, replace and upgrade any single device, as well as copy configurations between thousands of devices automatically. Apply improved security controls to mitigate security threats by managing HTTPS or 802.1x certificates and update accounts and passwords. AXIS Device Manager enables users to manage all major installation, security and maintenance tasks for the majority of Axis network cameras, access-control and audio devices.

- > Manage all major installation, security and maintenance tasks — all major Axis devices
- > Suitable for site installations of all sizes
- > Proactively manage cybersecurity
- > Fast and easy configuration of new devices — backup and restore settings
- > Efficient installation of firmware upgrades and applications



AXIS Device Manager

System features

Supported products	Axis network products: Axis network cameras and encoders, PTZ and thermal cameras with firmware 4.40 or later Audio system products Network door controllers Network door stations Network I/O relay modules Network switches
Device management	Assign an IP address to any device or range of devices Collect device data by sending HTTP requests to devices and get results for each device Monitoring device status User-defined tags for improved operational efficiency Manage user accounts and set passwords Export device list as a CSV file
Configuration	Configure standard parameters to several devices, including action rules, stream profiles, device time and IP settings. Duplicate configurations from already configured devices to multiple devices
Security	Harden your devices according to Axis hardening guide Deploy HTTPS certificates on devices. Renew HTTPS certificates. Management of HTTPS certificates requires 5.70 firmware version or higher Manage IEEE 802.1x certificates on devices. Management of IEEE 802.1x certificates requires 5.50 firmware version or higher
Backup	Backup and restore device settings Set device settings back to factory default
Maintenance	Replace a broken device with a new one and import existing settings to the new device

Upgrade multiple devices sequentially or in parallel. Automatic download of latest available firmware from Axis

Event log	Event log with sort and search functions showing performed actions and changed device status
Scalability	Suitable for managing up to several thousand Axis devices The AXIS Device Manager client can simultaneously connect to multiple servers or systems
Languages	Arabic, Czech, Chinese (Simplified), Chinese (Traditional), Dutch, English, Finnish, French, German, Italian, Japanese, Korean, Persian, Polish, Portuguese (Brazil), Russian, Spanish, Swedish, Thai, Turkish, Vietnamese

System requirements

Software	Firmware 4.40 or later Microsoft .NET runtime environment Always use the latest service packs For a list of all supported operating systems, see the release notes available at axis.com/techsup
Minimum requirements	Intel i5 or equivalent AMD RAM: 4 GB (8 GB recommended for larger systems) Operating system: 64-bit operating system

Connected services

Applications	Support for AXIS Camera Application Platform. Installation of Axis-compatible applications, including license files to multiple devices
---------------------	---

Environmental responsibility:

www.axis.com/environmental-responsibility