

# AXIS 231D/AXIS 232D Network Dome Cameras

*For professional video surveillance applications*

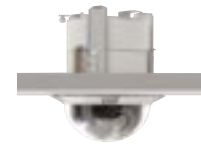
For demanding security surveillance and remote monitoring applications, the AXIS 231D/232D Network Dome Cameras deliver superior quality Motion JPEG and MPEG-4 video in all light conditions over IP networks. As with all true domes, the AXIS Network Dome Cameras enable a continuous 360-degree pan operation and support 20 preset positions and guard tour. They also provide a complete set of network security features such as HTTPS and IP address filtering and an 18x optical zoom, autofocus lens, with a fast and accurate pan/tilt function.

The AXIS 231D/232D can capture color video in light conditions down to 0.3 lux, and AXIS 232D, with its automatic or manually removable IR-cut filter, is able to capture black and white video in dark conditions as low as 0.005 lux.

The AXIS 231D/AXIS232D is perfect for professional security installations at airports, railway stations and prisons, as well as at warehouses, manufacturing facilities, shopping centers and school campuses.



- Full frame rate: up to 30/25 frames per second for all resolutions
- Support simultaneous streams of Motion JPEG and MPEG-4
- Built-in 18x optical + 12x digital zoom lens with auto focus
- Day/night functionality with images down to 0.005 lux (AXIS 232D)
- Preset positions and Guard tour
- HTTPS for encrypted communication



Specifications	
<b>Models</b>	AXIS 231D 50 Hz/PAL AXIS 231D 60 Hz/NTSC AXIS 232D 50 Hz/PAL (Automatic day/night functionality) AXIS 232D 60 Hz/NTSC (Automatic day/night functionality)
<b>Image Sensor</b>	1/4" Sony EXview HAD CCD
<b>Lens</b>	Autofocus with 18x optical zoom f=4.1mm wide to 73.8mm tele. F1.4-3.0 Focus range: 35mm (wide) or 800mm (tele) to infinity
<b>Angle of view</b>	48° (wide end) to 2.8° (tele end)
<b>Zoom</b>	18x optical and 12x digital, total 216x
<b>Minimum illumination</b>	Color: 0.3 lux at 30IRE B/w: 0.005 lux at 30IRE (Only AXIS 232D)
<b>Shutter time</b>	1 sec to 1/10.000sec
<b>Pan Range</b>	360° endless
<b>Tilt Range</b>	0° - 90°
<b>Max speed</b>	Pan 360°/s Tilt 360°/s
<b>Video compression</b>	Motion JPEG MPEG-4 Part 2 (ISO/IEC 14496-2), Profiles: ASP and SP
<b>Resolution</b>	Resolutions 4CIF, 2CIFExp, 2CIF, CIF, QCIF Max 704x480 (NTSC) 768x575 (PAL) Min 160x120 (NTSC) 176x144 (PAL)
<b>Frame rate (NTSC/PAL)</b>	Motion JPEG: Up to 30/25fps at 4CIF MPEG-4: Up to 30/25 fps at 2CIF
<b>Video streaming</b>	Simultaneous Motion JPEG and MPEG-4 Controllable frame rate and bandwidth Constant and variable bit rate (MPEG-4)
<b>Image settings</b>	Compression levels: 11 (Motion JPEG)/23 (MPEG-4) Configurable brightness, sharpness, white balance, exposure control, backlight compensation Overlay capabilities: time, date, text, custom logo or image De-interlacing (4CIF resolution)
<b>PTZ Control</b>	20 preset positions Guard tour Control queue
<b>Security</b>	Multiple user access levels with password protection IP address filtering, HTTPS encryption
<b>Alarm and event management</b>	Events triggered by built-in motion detection, external inputs or according to a schedule Image upload over FTP, email and HTTP Notification over TCP, email, HTTP and external outputs Pre- and post-alarm buffer of 9 MB per channel (approx. 4 min. of CIF resolution video at 4 frames per second)
<b>Connectors</b>	Ethernet 10BaseT/100BaseTX, RJ-45 D-sub for RS-232 port 4 alarm inputs, 4 outputs
<b>Processors and memory</b>	CPU: ETRAX 100LX 32bit Video processing and compression: ARTPEC-2 Memory: 32 MB RAM, 8 MB Flash Battery backed up real-time clock
<b>Power</b>	24V AC or DC, max 25W
<b>Operating conditions</b>	5 - 50 °C (41 - 122 °F) Humidity 20 - 80% RH (non-condensing)
<b>Installation, management and maintenance</b>	Installation tool on CD and web-based configuration Support for configuration backup and restore Support for firmware upgrades over HTTP or FTP, firmware available at <a href="http://www.axis.com">www.axis.com</a>
<b>Video access from Web browser</b>	Camera live view, sequence tour capability for up to 20 Axis cameras, customizable HTML pages, complete remote control of pan, tilt and zoom
<b>Minimum Web browsing requirements</b>	Pentium III CPU 500 MHz or higher, or equivalent AMD 128 MB RAM AGP graphic card, Direct Draw, 32 MB RAM Windows XP, 2000, NT4.0*, ME* or 98*, DirectX 9.0 or later Internet Explorer 5.x or later For other operating systems and browsers see <a href="http://www.axis.com/techsup">www.axis.com/techsup</a>  <i>*Motion JPEG only</i>
<b>System integration support</b>	Powerful API for software integration available at <a href="http://www.axis.com">www.axis.com</a> , event trigger data in video stream, AXIS Media Control SDK, embedded scripting support, embedded operating system: Linux 2.4
<b>Supported protocols</b>	HTTP, HTTPS, SSL/TLS*, TCP, SNMPv1/v2cv/v3 (MIB-II), RTSP, RTP, UDP, IGMP, RTCP, SMTP, FTP, DHCP, UPnP, ARP, DNS, DynDNS, SOCKS. More information on protocol usage available at <a href="http://www.axis.com">www.axis.com</a>  <i>*This product includes software developed by the Open SSL Project for use in the Open SSL Tool kit (<a href="http://www.openssl.org">www.openssl.org</a>)</i>
<b>Applications (not incl.)</b>	AXIS Camera Station - Surveillance application for viewing, recording and archiving up to 25 cameras AXIS Camera Recorder - Surveillance application for viewing and recording up to 16 cameras AXIS Camera Explorer - Basic software for viewing and manual recording  See <a href="http://www.axis.com/partner/adp_partners.htm">www.axis.com/partner/adp_partners.htm</a> for more software applications via partners
<b>Included Accessories</b>	Power supply 24V AC Hard ceiling mounting bracket Drop ceiling mounting bracket CD with installation tool, software, User manual, MPEG-4 licenses (1 encoder, 1 decoder) MPEG-4 decoder (Windows) Quick installation guide Connection module for power and alarm in/out
<b>Accessories (not incl.)</b>	Videotek DBH24K Dome Housing IP65 rated <sup>1)</sup> Various mounting brackets for outdoor housing Smoked and transparent bubble Outdoor IP66 rated power supply AXIS PS24 <sup>2)</sup> IR Illumination (Only AXIS 232D)
<b>Approvals</b>	EMC: CE: EN 55022:1994+A1+A2 Class A; EN 61000-3-2:2000; EN 61000-3-3:1995+A1; EN 55024:1998+A1; EN 61000-6-1:2001; EN 61000-6-2:2001; FCC: Part 15 Subpart B Class A; VCCI: Class A; C-tick AS/NZS 3548. ICES-003 Safety: UL and CSA (power supply), EN 60950 (power supply)
<b>Weight</b>	1.93 kg (4.3 lbs) excl. power supply



<sup>1)</sup>Videotek DBH24K Dome Housing IP65 rated

### Optional accessories



<sup>2)</sup>Outdoor IP66 rated power supply AXIS PS24

[www.axis.com](http://www.axis.com)



Make your network smarter