

## AXIS 216FD/216FD-V Network Cameras

Discreet cameras for demanding indoor video surveillance.



- > Discreet and compact design
- > Simultaneous MPEG-4 and Motion JPEG
- > Two-way audio
- > Power over Ethernet
- > Powerful event management

The AXIS 216FD family offers a choice of professional networked fixed dome solutions for exposed indoor locations. Compact and discreet, they are ideal for the indoor surveillance of retail stores, schools, prisons, banks and other office buildings.

AXIS 216FD-V is a discreet fixed dome network camera specifically adapted for indoor environments potentially exposed to vandalism. AXIS 216FD has a lighter, tamper-resistant casing and is also suitable for indoor video surveillance. AXIS 216FD Network Cameras are easy to install, allowing flexible mounting on wall or ceiling.

Simultaneous MPEG-4 and Motion JPEG video streams allow for optimization of image quality and bandwidth efficiency.

With two-way audio support, AXIS 216FD and AXIS 216FD-V allow remote users to not only view but also listen to and communicate with visitors and intruders.

The event management capabilities ensure efficient use of the cameras in the network video system. This includes video motion detection, audio detection, active tampering alarm and alarm buffering.

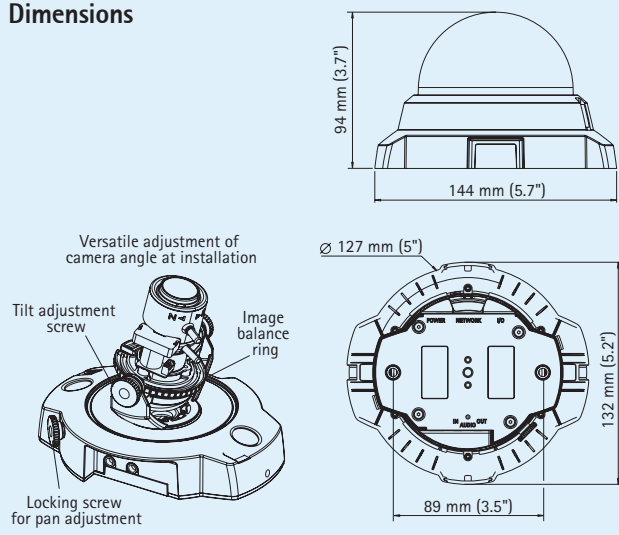


## Technical specifications – AXIS 216FD/216FD-V Network Cameras

Camera		Network	
<b>Models</b>	<b>AXIS 216FD:</b> Tamper-resistant casing <b>AXIS 216FD-V:</b> Vandal-resistant casing	<b>Security</b>	Password protection, IP address filtering, HTTPS encryption, IEEE 802.1X network access control, user access log
<b>Image sensor</b>	1/4" Progressive scan RGB CMOS	<b>Supported protocols</b>	IPv4/v6, HTTP, HTTPS, QoS Layer 3 DiffServ, FTP, SMTP, Bonjour, UPnP, SNMPv1/v2c/v3 (MIB-II), DNS, DynDNS, NTP, RTSP, RTP, TCP, UDP, IGMP, RTCP, ICMP, DHCP, ARP, SOCKS
<b>Lens</b>	Varifocal 2.8 – 10 mm, F1.3, DC-iris Angle of view: 20° – 73° horizontal	<b>System integration</b>	
<b>Minimum illumination</b>	1 lux, F1.3	<b>Application Programming Interface</b>	Open API for software integration, including VAPIX® from Axis Communications available at <a href="http://www.axis.com">www.axis.com</a>
<b>Shutter time</b>	1/15000 s to 1/4 s	<b>Intelligent video</b>	Video motion detection, active tampering alarm, audio detection
<b>Camera angle adjustment</b>	Pan 360°, tilt 170°, rotation 340°	<b>Alarm triggers</b>	Intelligent video and external input
<b>Video</b>		<b>Alarm events</b>	File upload via FTP, HTTP and email Notification via email, HTTP and TCP External output activation
<b>Video compression</b>	MPEG-4 Part 2 (ISO/IEC 14496-2) Motion JPEG	<b>Video buffer</b>	9 MB pre- and post alarm
<b>Resolutions</b>	160x120 – 640x480	<b>General</b>	
<b>Frame rate MPEG-4</b>	Up to 30 fps in VGA	<b>Casing</b>	<b>AXIS 216FD:</b> Tamper-resistant casing <b>AXIS 216FD-V:</b> 1000 kg (2200 lb.) impact-resistant casing
<b>Frame rate Motion JPEG</b>	Up to 30 fps in VGA	<b>Processors and memory</b>	ARTPEC-A, 32MB RAM, 8MB Flash
<b>Video streaming</b>	Simultaneous MPEG-4 and Motion JPEG Controllable frame rate and bandwidth VBR/CBR MPEG-4	<b>Power</b>	4.9 – 5.1 V DC max 3.6 W Power over Ethernet IEEE 802.3af Class 1
<b>Image settings</b>	Compression, color, brightness, sharpness, white balance, exposure control, rotation, fine tuning of behavior at low light Text and image overlay Privacy mask	<b>Connectors</b>	RJ-45 10BASE-T/100BASE-TX PoE, DC jack Terminal block for 1 alarm input and 1 output 3.5 mm mic/line in, 3.5 mm line out
<b>Audio</b>		<b>Operating conditions</b>	0 – 50 °C (32 – 122 °F) Humidity 20 – 80% RH (non-condensing)
<b>Audio streaming</b>	Two-way, half-duplex	<b>Approvals</b>	EN 55022 Class B, EN 55024, EN 61000-3-2, EN 61000-3-3, FCC Part 15 Subpart B Class B, VCCI Class B, ICES-003 Class B, C-tick AS/NZS CISPR 22, EN 60950-1 Power supply: EN 60950-1, UL, CSA
<b>Audio compression</b>	AAC LC 8 kHz G.711 PCM 8 kHz G.726 ADPCM 8 kHz Configurable bit rate	<b>Weight</b>	<b>AXIS 216FD:</b> 425 g (0.94 lb.) <b>AXIS 216FD-V:</b> 580 g (1.28 lb.)
<b>Audio input/output</b>	Built-in microphone, external microphone input or line input, line level output	<b>Included accessories</b>	Power supply, mounting and connector kits, Installation Guide, CD with installation tools, recording software and User's Manual, Windows decoder 1-user license

More information is available at [www.axis.com](http://www.axis.com)

### Dimensions



### Optional accessories

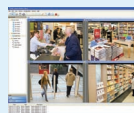
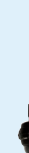
Drop-ceiling mount kit, transparent or smoked cover



Optional casings with smoked cover or black casing



Various mounting kits



For information on AXIS Camera Station and video management software from Axis' Application Development Partners, see [www.axis.com/products/video/software/](http://www.axis.com/products/video/software/)