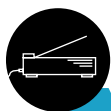


AXIS 700 Network Scan Server

The Plug-and-Play Solution for Distributing Scanned Information Across Networks



N

etwork Scan Servers

The AXIS 700 Network Scan Server is the ideal way to distribute paper-based information across workgroups and the enterprise. Simply attach the Network Scan Server to any supported document scanner and plug it into your network. Your users can then effortlessly scan documents, photographs, reports and other information directly into the network and send them anywhere in the enterprise environment — from individual users to corporate distribution lists across the building or around the world. Easy to install and intuitive to use, the AXIS 700 Network Scan Server is a practical way to reduce the cost, inefficiencies and duplication of effort required by photocopying, mailing, faxing, and other conventional paper-based communication.

The First True Network Scan Server

Designed as an HTTP (Web) server with file (FTP) and e-mail (SMTP) clients, the AXIS 700 Network Scan Server is optimized for intranets and the Internet. It includes an embedded Web server enabling you to configure and manage the Scan Server through easy-to-understand Web pages. It works within any Windows, UNIX or IntranetWare environment and complements enterprise information solutions such as groupware, workflow, and document management applications.

Installs in Minutes

Network administrators can have the Scan Server up and running in just minutes. You just attach the Scan Server to the network and assign an IP address. The Scan Server even auto-detects attached scanner brands and models. Pre-set scanning profiles (which can be easily modified and extended) are included to relieve the installer and the user from having to set up scanning characteristics manually.

Supports Wide Range of Scanners

The AXIS 700 Network Scan Server supports HP and Fujitsu scanners at all levels of price and functionality, as well as the Canon DR-3020 duplex sheetfed scanner. It also supports all of the major imaging and OCR applications available on the market. This allows you to easily meet your organization's exact scanning requirements, while having the flexibility to quickly adapt to new demands in the future.

File Server Independent

The AXIS 700 Network Scan Server uses Axis Communications' ThinServer™ Technology to operate completely independent of any file server or PC. This approach allows peer-to-peer communication between clients and the Scan Server, keeping network traffic to a minimum and offloading your file servers.

Easy to Use

The Scan Server is completely intuitive to use and requires no special training. It looks and behaves like a basic copier or fax, with very few buttons and operation steps to deal with. Viewing scanned files is easy too, since they can be accessed from standard Web browsers and free-of-charge image viewers.



Now you can easily attach scanners directly to the network, eliminating the cost of paper distribution

AXIS 700 Network Scan Server



Network Scan Servers

Technical Specifications

SUPPORTED SCANNERS

Attached scanner brand and model is automatically sensed by the Scan Server, eliminating user intervention in setting up connected scanner. Supported scanners include:

All current SCSI-models of Fujitsu's scanners up to and including 3097G Plus, with optional compression (CMP) and image-processing (IPC) modules

Non-current (as well as future) Fujitsu scanners are supported via a generic Fujitsu driver

All current and legacy HP SCSI scanners, with optional Automatic Document Feeder (ADF) or Transparency Adapter

Canon DR-3020 duplex sheetfed scanner, utilizing the duplex and compression features

SUPPORTED IMAGE FILE FORMATS

TIFF 6.0; CCITT G.3 and G.4 for bilevel images, PackBits for grayscale images; both single- and multi-page TIFF are supported

JPEG File Interchange Format (JFIF) for single-page color or grayscale images

USER INTERFACE

Alphanumeric LCD display with 2 rows by 16 characters

4 LEDs signaling Status, Busy, Network, and Power

7 keys for Menu, Up, Down, Enter, Send, Scan, and Cancel

Menu functionality for selecting Destination, Scanning profile, Paper size, and Double-sided

Multiple selection of destination possible

SUPPORTED SYSTEMS

Any system supporting TCP/IP and optionally:

HyperText Transfer Protocol (HTTP) client (Web browser)

File Transfer Protocol (FTP) server

Simple Mail Transfer Protocol (SMTP) server

Web-browsers supported:

Netscape Navigator 2.0 and higher

Netscape Communicator 4.0

Microsoft Internet Explorer 3.0 and higher also other HTTP 1.0 and HTML 3.0 compatible browsers

INSTALLATION

Set IP-address via user interface or via DHCP, BOOTP, RARP or ARP

For scan-to-file and scan-to-e-mail: Configure destinations via Web browser

SUPPORTED PROTOCOLS

HTTP, FTP, SMTP, TCP, IP, BOOTP, DHCP, ARP, RARP, ICMP

NETWORK MANAGEMENT

Configuration and administration via standard Web browser

SNMP MIB II

NETWORK ATTACHMENTS

Ethernet, RJ-45 connector (10baseT) and BNC (10base2)

SECURITY

Administrator's log-in for configuration and administration

Administrator specifies what destinations should be accessible

Possible to set a default destination (and optionally no other) for fixed application use

SOFTWARE UPDATES

Flash memory allows central and remote software updates over the network using FTP over TCP/IP.

HARDWARE

CPU: 32-bit RISC processor (AXIS ETRAX)

Flash memory: 2 Mbytes

RAM: 2 Mbytes

User storage: 8 kbytes

SCANNER ATTACHMENT

SCSI-2, 50-pin female micro-D connector

OPTIONAL ACCESSORIES

SCSI-2 cable: 50-pin high-density shielded to 50-pin shielded low-density (Centronics)

SCSI-2 cable: 50-pin high-density shielded to 50-pin shielded high density (micro-D)

POWER SUPPLY

12V DC, 36VA, via external power unit (PS-C) or

12V DC, 13.6VA, via external power unit (PS-E)

DIMENSIONS

Height 1.7" (4.3 cm)

Width 5.9" (14.9 cm)

Depth 8.8" (22.4 cm)

Weight 1.5 lbs (0.7 kg).

ENVIRONMENTAL

Temperature: 40-105°F (5-40°C)

Humidity: 20-80% RHG, non-condensing

APPROVALS

EMC: FCC Subpart B, Class A

EN 55022/1994,
EN 50082-1/1992

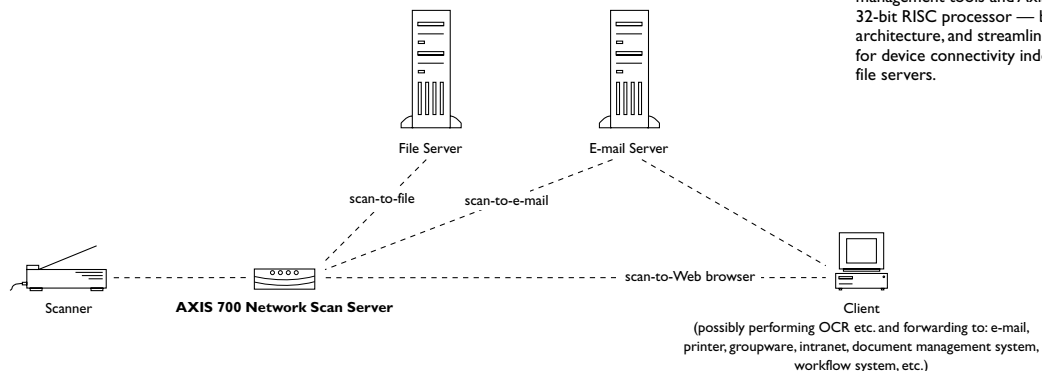
Safety: EN 60950, UL, CSA

WARRANTY

3 years; 5 years if joining Axis User Group

THINSERVER™ TECHNOLOGY

The AXIS 700 Network Scan Server incorporates ThinServer Technology from Axis Communications. This technology is comprised of "thin" versions of the most popular network operating systems, Web management tools and Axis's own ETRAX 32-bit RISC processor — based on open architecture, and streamlined and optimized for device connectivity independent of any file servers.



Axis Communications

URL: <http://www.axis.com>

Lund +46 46 270 18 00

Boston +1 800-444-AXIS (2947)

Paris +33 1 49 69 15 50

London +44 1753 714310

Tokyo +81 3 3545 8282

Singapore +65 250 8077

Hong Kong +852 2836 0813

Beijing +86 10 6510 2705

Shanghai +86 21 6445 4522

Taipei +886 2 8780 5972

Seoul +82 2 780 9636

GSA pricing available in U.S. Call for more information. Axis is a registered trademark, and ThinServer is a trademark of Axis Communications AB. All other trademarks belong to their respective holders. We reserve the right to introduce modifications without notice.

