



AXIS 2120 Network Camera

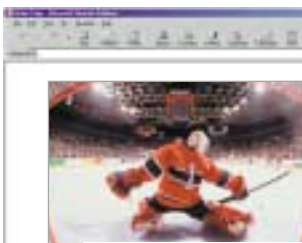
Catch it, web it, watch it...

Complete with built-in Web server and motion detection, the AXIS 2120 Network Camera is all you need to keep a visual track of events both at home, and in the office. And of course – it is the perfect tool for any web attraction application!

With no PC required for transmitting your images over the WAN/LAN or the Internet – you're just a network plug away from live remote monitoring from any convenient desktop.

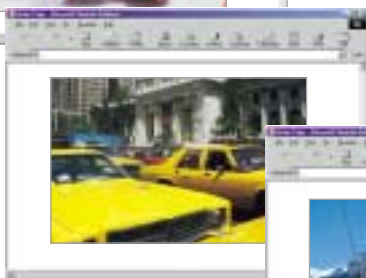


Show the local sport games on the web!



Watch the building grow!

Get the tourists coming!



Keep track of traffic!



- DC-Iris lens for optimal image quality in outdoor light conditions
- Built-in motion detection
- Up to 30 frames per second
- Built-in Web Server and network connection
- View live images from any network-connected PC
- Audio functionality available in combination with the AXIS 2191 Audio Module

AXIS[®]
COMMUNICATIONS

Technical Specification - AXIS 2120 Network Camera

General

- Built-in Web Server and network interface. No PC needed for operation.
- Powerful video motion detection with multiple sensitivity windows.
- Linux-based operating system.

Installation

- Quick and easy installation – connect to your network, assign an IP address or use the included null-modem cable for modem installation.

Camera

- Digital, 24-bit color.

Image sensor

- 1/3 inch Sony super HAD interlaced CCD.
- HxV: 768x495 (NTSC), 752x582 (PAL).
- Resolution (pixels): 704x480 (NTSC) 704x576 (PAL).

Exposure

- Backlight compensation.
- Automatic AGC.
- Automatic and fixed White Balance.
- Electronic shutter: 1/60s (1/50s)-1/10.000 sec. NTSC (PAL).

Sensitivity

- Illumination range: 1 – 200,000 Lux with F1.0 DC-Iris lens. About 1 to 5,000 Lux with fixed iris lens.

Lens

- Standard CS mount lens fitting.
- DC-Iris vari-focal (zoom) lens 3.5–8.0mm eqv. to 25–55mm on a 35mm camera. Ideal for outdoor monitoring (in outdoor housing).

Image

- Image frame rate: up to 30 (25) frames/s at 352x240 (352x288) resolution. Up to 12 (10) frames/s at 704x480 (704x576) resolution. NTSC (PAL).
- JPEG still images and Motion-JPEG video.
- High-speed hardware-based image compression, generating high quality JPEG images.
- 5 levels of compression are available. The file size of a JPEG compressed image depends on the actual content of the image. Images containing a lot of detail will generate larger files. Image quality is controlled through the level of compression. High compression yields smaller files at the expense of image quality, while low compression results in larger files, but maintains image quality. The table below shows average file sizes, derived from real life tests.

Resolution	Compression level		
	Low	Medium	High
PAL, 352x288	12 Kb	8 Kb	4 Kb
PAL, 704x576	52 Kb	34 Kb	20 Kb
NTSC, 352x240	10 Kb	7 Kb	3 Kb
NTSC, 704x480	43 Kb	28 Kb	13 Kb

- Configurable maximum bandwidth limitation to prevent network saturation. 30 (25) frames/s typically requires about 1.5 Mbit/s.

General I/O

- Accepts dial-in and dial-out via external modem (not included).
- Event triggered remote image storage via e-mail and FTP.

System Requirements

- Compatible with operating systems such as Windows 98, Windows 2000, Windows XP, Windows NT, Windows ME, Linux, Mac OS and Mac OS X.
- Internet Explorer 4.x, 5.x, 6.x or Netscape Navigator 4.x.
- Non-network, i.e. modem installation requires Windows PC with Dial-up networking.

Supported Protocols

- TCP/IP, HTTP, FTP, SMTP, ARP, BOOTP, PPP, CHAP, PAP, DHCP and more.

Security

- Password/username protection for restricted camera access.

Hardware

- ARTPEC-1 compression chip.
- ETRAX 100 processor, 32 bit RISC, 100 MIPS CPU for high performance.
- 16 Mbyte RAM.
- 4 Mbyte FLASH PROM.

Firmware Updates

- Flash memory for simple upgrades and storage of user designed html files.

Connections

- RJ45 twisted pair direct network connection for 100baseTX Fast and 10baseT Ethernet.
- RS-232 port for modem connection or control of RS-232 devices.



- Input/Output connector to trigger the camera on external events, e.g. a door sensor with a solenoid.
- DC-Iris lens connector.
- Control button for factory defaults.

Power Supply

- External power supply connector 9-15V AC, min 10VA or 9-15V DC, min 8W.

Operating Environment

- Requires proper environmental housing for outdoor use.
- Operating temperature: 40–122° F (5–50° C).
- Humidity: 20–80% RHG, non-condensing.
- The DC-Iris lens must be used and correctly configured for use in environments where strong light conditions prevail. Avoid aiming the camera directly towards extremely bright objects such as the sun, as this may damage the CCD image sensor.

Dimensions / Weight

- Height: 2.24" (5.7 cm)
- Width: 3.39" (8.6 cm)
- Length: 5.43"+1.78"(lens) (13.8 + 4.5 cm)
- Weight: 0.25 kg (excl. power supply and tripod)

Approvals

- EMC : FCC Class A, Part 15 subpart B
- CE : EN 55022 Class B, EN55024
- Safety: EN 60950, UL, CSA

Accessories Included

- DC-Iris variable focal length lens (3.5–8.0mm).
- Camera mini-tripod, using standard 1/4" nut.
- Null modem cable for modem installation.
- Power cord extension cable.
- Power supply: 12V AC, 9.6 VA.
- I/O connectors.
- Rugged metal tripod.

For more information visit our website: www.axis.com