

## AXIS TP3908-E Extension Pipe

Com rosca NPS de 1,5 "

Aumente a distância entre uma câmera de monitoramento e sua superfície de montagem (teto, parede ou poste) com esse acessório de montagem com tubo de extensão. Disponível em três comprimentos, 15 cm (6"), 30 cm (12") e 100 cm (39"), e pode ser montado tanto na horizontal como na vertical. Com uma rosca NPS de 1,5", pode ser conectado com segurança a outros componentes, como suportes de montagem ou caixas de derivação. Fabricado em alumínio com revestimento eletrostático, tem proteção contra corrosão e arranhões. Além disso, está disponível em preto ou branco para combinar com diversos ambientes.

- > Disponível em três comprimentos
- > Disponível em preto e branco
- > Montagem vertical ou horizontal
- > Alumínio pintado a pó
- > Ambientes internos e externos



## AXIS TP3908–E Extension Pipe

### Variantes

AXIS TP3908–E Extension Pipe Black 15 cm  
AXIS TP3908–E Extension Pipe Black 30 cm  
AXIS TP3908–E Extension Pipe Black 100 cm  
AXIS TP3908–E Extension Pipe White 15 cm  
AXIS TP3908–E Extension Pipe White 30 cm  
AXIS TP3908–E Extension Pipe White 100 cm

### Suporte

AXIS T91B50 Telescopic Ceiling Mount  
AXIS T91B51 Ceiling Mount  
Suporte para montagem no teto AXIS T91B63  
AXIS T91B67 Pole Mount  
Suporte para montagem em parede AXIS T91D61 com NPS de 1,5 pol.  
AXIS T91D62 Telescopic Parapet Mount  
AXIS TP3004–E Wall Mount Black  
AXIS TP3301–E Pole Mount Black

### Aprovações

#### Ambiente

IEC 60721–3–3 Classe 3M3, IEC/EN 62262 IK10,  
NEMA 250 Type 4X (apenas parte protegida contra corrosão)

### Geral

#### Caixa de proteção

Classificação IK10 e NEMA 4X (apenas parte protegida contra corrosão)  
Cor: branco NCS S 1002–B (para a versão branca)  
Cor: preto NCS S 9000–N (para a versão em preto)  
Caixa de proteção de alumínio

#### Ambiente

Ambientes internos  
Ambientes externos

#### Carga máxima

Válido para montagem horizontal  
AXIS TP3908–E Extension Pipe 15 cm: 10 kg (22 lb)  
AXIS TP3908–E Extension Pipe 30 cm: 6 kg (13,2 lb)  
AXIS TP3908–E Extension Pipe 100 cm: 3 kg (6,6 lb)

#### Peso

AXIS TP3908–E Extension Pipe 15 cm: 460 g (1,0 lb)  
AXIS TP3908–E Extension Pipe 30 cm: 756 g (1,7 lb)  
AXIS TP3908–E Extension Pipe 100 cm: 2.150 g (4,7 lb)

### Conteúdo da embalagem

Tubo, Guia de Instalação

### Acessórios opcionais

Kit de Suporte AXIS T94A01D  
Kit de Suporte AXIS T94M01D  
AXIS TP3105–E Pendant Kit Black  
AXIS TP3106–E Pendant Kit Black  
Para obter informações adicionais sobre acessórios, consulte [www.axis.com](http://www.axis.com)

### Números de peças

Disponível em [axis.com/products/axis-tp3908-e-extension-pipe#part-numbers](http://axis.com/products/axis-tp3908-e-extension-pipe#part-numbers)

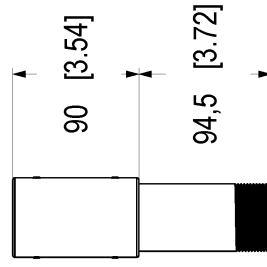
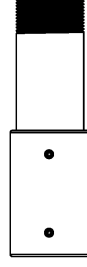
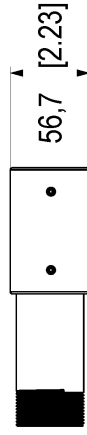
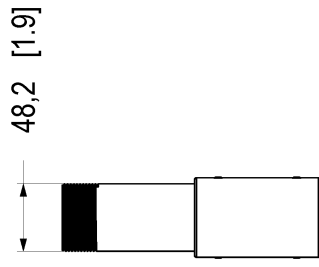
### Garantia:

Garantia de 3 anos, consulte [axis.com/warranty](http://axis.com/warranty)

### Sustentabilidade

#### Responsabilidade ambiental

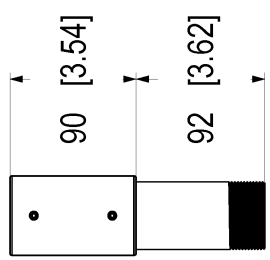
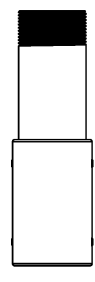
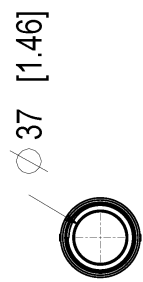
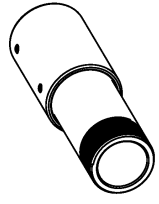
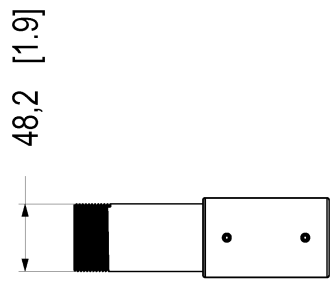
[axis.com/environmental-responsibility](http://axis.com/environmental-responsibility)  
A Axis Communications é signatária do Pacto Global da ONU, leia mais em [unglobalcompact.org](http://unglobalcompact.org)



© 2025 Axis Communications AB. All rights reserved.

## AXIS TP3908-E Extension Pipe White 15 cm

Dimensions in mm [inch]			
Date	Version	Scale	
2025 Jun-30	MT.1	T3	
Drawing Number	Size	Sheet	
3382066	A3	1(1)	

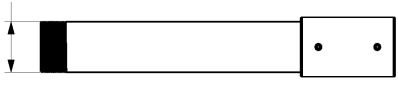


Dimensions in mm [inch]			
Date	Version	Scale	Sheet
2025 Jun-26	M1.1		13
Drawing Number	Size		Sheet
3380105	A3		1(1)

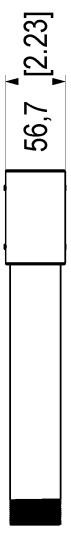
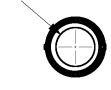


# AXIS TP3908-E Extension Pipe Black 15 cm

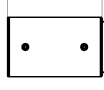
48,2 [1.9]



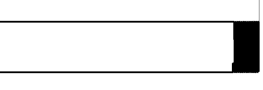
Ø 37 [1.46]



90 [3.54]



247,4 [9.74]

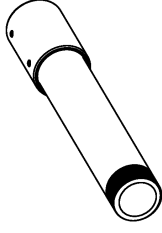
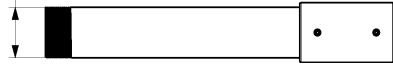


Dimensions in mm [inch]			
Date	Version	Scale	Sheet
2025 Jun-30	M1.1	1:4	1 of 1
Drawing Number		Size	Sheet
3382173		A3	1(1)



# AXIS TP3908-E Extension White 30 cm

48,2 [1.9]



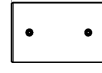
Ø 37 [1.46]



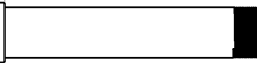
56,7 [2.23]



90 [3.54]



242 [9.53]

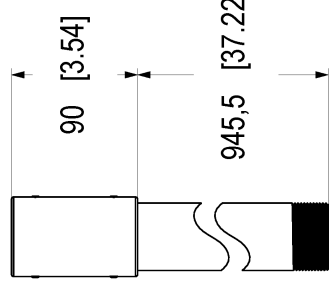
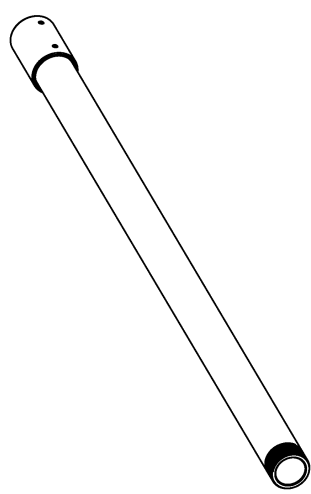
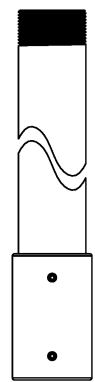
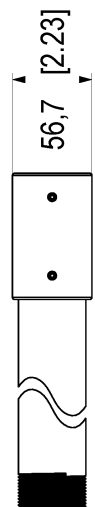
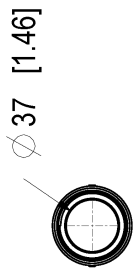
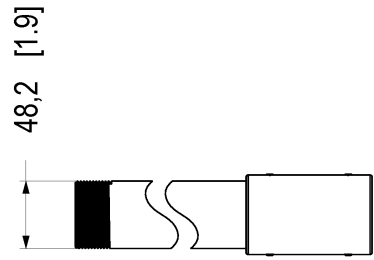


Dimensions in mm [inch]			
Date	Version	Scale	Sheet
2025 Jun-26	M1.1	1:4	1.4
Drawing Number	Size	Sheet	1(1)
3380347	A3		

## AXIS TP3908-E Extension Pipe Black 30 cm



© 2025 Axis Communications AB. All rights reserved.



Dimensions in mm [inch]			
Date	Version	Scale	Sheet
2025 Jun-30	M1.1	1:3	1(1)
Drawing Number	Size		
3382231	A3		



# AXIS TP3908-E Extension White 100 cm

