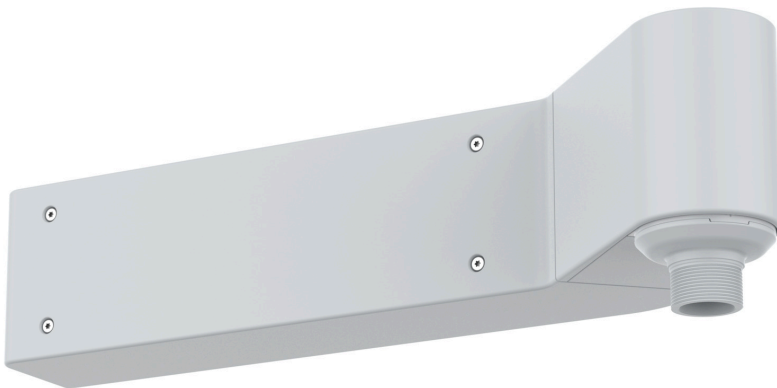


## AXIS TP3302-E Corner Mount

Corner mount for dome and panoramic cameras

With a stylish design, this compact, all-in-one, outdoor-ready mount blends seamlessly into most indoor and outdoor environments. It offers flexible installation and can be mounted on either the left or right side to suit specific needs.

- > **Aesthetically appealing design**
- > **Mountable on either left or right side**
- > **Spacious compartment for connectivity devices**
- > **Robust, IK10-rated**
- > **Outdoor and indoor-ready**



# AXIS TP3302-E Corner Mount

## Approvals

### Environment

IEC 60068-2-1, IEC 60068-2-2, IEC 60068-2-6,  
IEC 60068-2-14, IEC 60068-2-27, IEC 60068-2-78,  
IEC/EN 60529 IP66, IEC/EN 62262 IK10

## General

### Supported products

Cameras compatible with specific pendant kits with  
1.5" NPS thread mount, such as:

AXIS T94K01D Pendant Kit

AXIS T94M01D Pendant Kit

AXIS T94N01D Pendant Kit

AXIS T94N02D Pendant Kit

AXIS T94T02D Pendant Kit

AXIS TP3103-E Pendant Kit

AXIS TQ3103-E Pendant Kit

For a complete list of compatible cameras, go to [axis.com/products/axis-tp3302-e-corner-mount#compatible-products](https://axis.com/products/axis-tp3302-e-corner-mount#compatible-products)

### Casing

IP66- and IK10-rated

Plastic casing

Color: white NCS S 1002-B

For repainting instructions, go to the product's support page. For information about the impact on warranty, go to [axis.com/warranty-implication-when-repainting](https://axis.com/warranty-implication-when-repainting). This product can be repainted.

### Mounting

Back: Cable hole

Side: 3/4" (M25) conduit side entries

### Connectors

Output: IP66, RJ45 Ethernet (male)

Input: RJ45 Ethernet (female), IDC

### Operating conditions

Temperature: -40 °C to 65 °C (-40 °F to 149 °F)

Humidity: 10–100% RH (condensing)

### Storage conditions

Temperature: -40 °C to 65 °C (-40 °F to 149 °F)

Humidity: 5–95% RH (non-condensing)

### Dimensions

For the overall product dimensions, see the dimension drawing in this datasheet.

Effective Projected Area (EPA): 0.35 m<sup>2</sup> (1.15 ft<sup>2</sup>)

### Weight

4823 g (10.6 lb)

### Box content

Mount, installation guide, wall bracket, connector guard, cable ties

### Languages

English, German, French, Spanish, Italian, Russian, Simplified Chinese, Japanese, Korean, Portuguese, Polish, Traditional Chinese, Dutch, Czech, Swedish, Finnish, Turkish, Thai, Vietnamese

### Warranty

3-year warranty, see [axis.com/warranty](https://axis.com/warranty)

### Part numbers

Available at [axis.com/products/axis-tp3302-e-corner-mount#part-numbers](https://axis.com/products/axis-tp3302-e-corner-mount#part-numbers)

## Optional accessories

### Mounting

AXIS T94 Pendant Kit, AXIS TQ31 Pendant Kit,

AXIS TP3103-E Pendant Kit

For more accessories, go to [axis.com/products/axis-tp3302-e-corner-mount#compatible-products](https://axis.com/products/axis-tp3302-e-corner-mount#compatible-products)

## Sustainability

### Substance control

PVC free, BFR/CFR free in accordance with JEDEC/ECA Standard JS709

RoHS in accordance with EU RoHS Directive 2011/65/EU and 2015/863, and standard EN IEC 63000:2018

REACH in accordance with (EC) No 1907/2006. For SCIP UUID, see [echa.europa.eu](https://echa.europa.eu)

### Materials

Renewable carbon-based plastic content: 70% (biobased)

Screened for conflict minerals in accordance with OECD guidelines

To read more about sustainability at Axis, go to [axis.com/about-axis/sustainability](https://axis.com/about-axis/sustainability)

**Environmental responsibility**

*[axis.com/environmental-responsibility](https://axis.com/environmental-responsibility)*

Axis Communications is a signatory of the UN Global Compact, read more at *[unglobalcompact.org](https://unglobalcompact.org)*

