

A woman with long dark hair, wearing a light-colored blazer, is sitting at a desk and working on a laptop. She is looking down at the screen with a slight smile. The background is a blurred city skyline at dusk or dawn, with warm lights from the buildings. A large, semi-transparent yellow diagonal shape cuts across the right side of the image.

AXIS DEVICE MANAGER EDGE

Easy device management from anywhere

Enter >

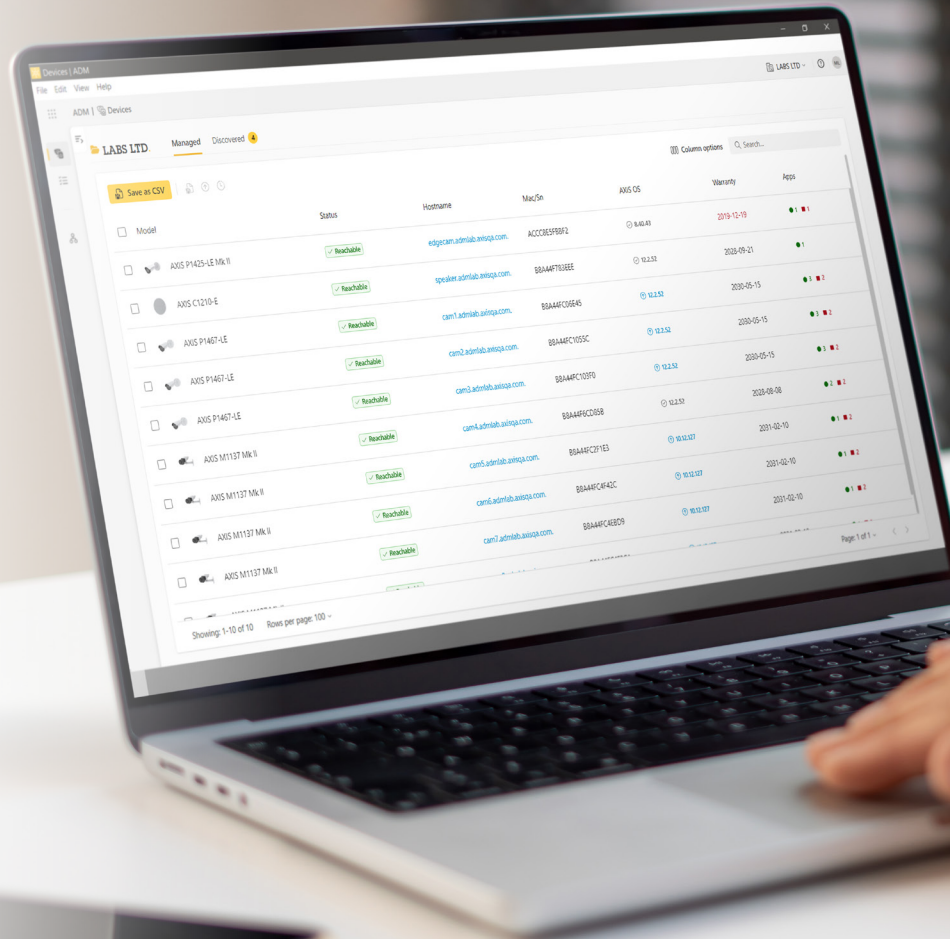
AXIS[®]
COMMUNICATIONS

Easy device management from anywhere

AXIS Device Manager Edge is an always-accessible device management software that helps ensure your devices are kept up to date with the latest software and cybersecurity patches.

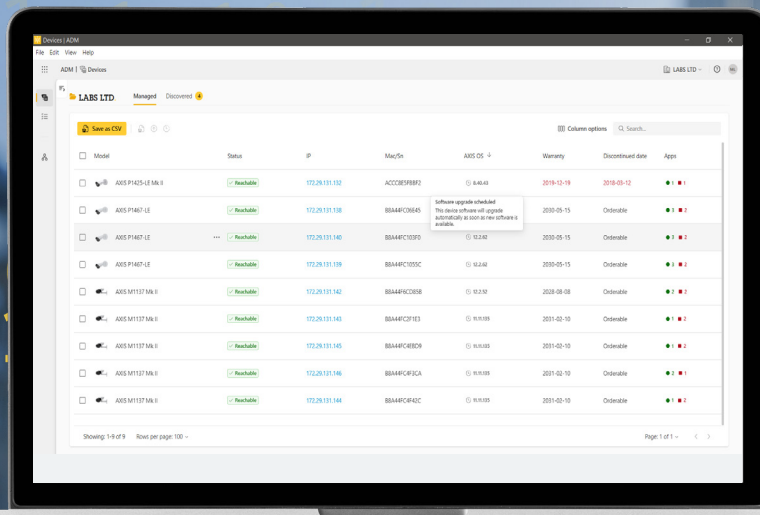
With instant access to key device information, it's easy to get an overview of the status of devices and maintain your system. You can monitor all your Axis devices and remotely perform any management tasks, saving time and effort and ensuring you get maximum value from your investment. This cloud-based application is accessible from anywhere on any device. What's more, AXIS Device Manager Edge licenses are included with Axis devices at no extra cost.

- > **Remotely manage all your devices**
- > **Upgrade device software automatically**
- > **Configure edge analytics**
- > **Ensure security and data confidentiality**
- > **Access and navigate easily and intuitively**



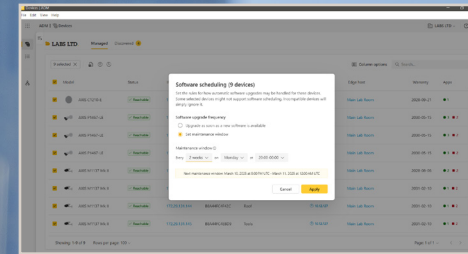
Ensure your products are always up to date and protected

This intuitive device management software is simple to use. It makes it easy to keep your Axis products up to date and protected throughout their lifetime. Remote access also means you can manage your devices at any time, from anywhere.



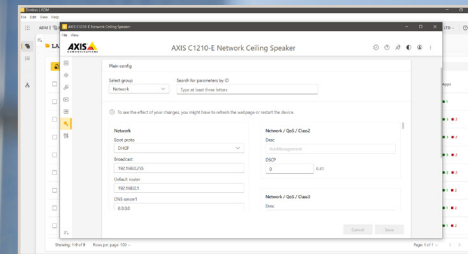
Schedule automatic upgrades

Ensure your devices always use the latest software release for consistent security, improved performance, and reduced downtime. Automatic upgrades save time and effort and minimize human error.



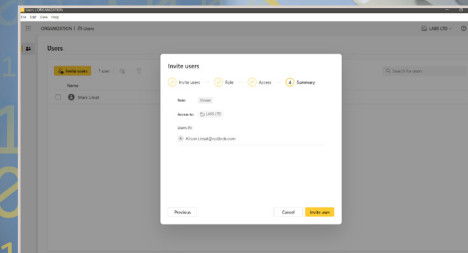
Remotely configure, upgrade, and troubleshoot devices

Enhance efficiency, reduce downtime, lower operational costs, and ensure consistent performance and security. You can easily manage devices site by site without the need for costly on-site visits.



Easy user management with pre-defined roles

Simplify user access control, reduce setup time, and enhance security through role-specific permissions. This helps ensure consistency and streamlines operations for efficient and trouble-free user management.



Instant overview

Get an instant status overview on a site-by-site basis with this easy-to-use software. You can quickly see connectivity and status information, so you'll know if there are any issues or if a device needs to be upgraded or replaced.

It's also easy to track warranty status for all devices in the system, including product discontinuation and end-of-support information. So, you can proactively plan hardware replacements, simplify strategic budget planning, and eliminate the risk of having unsupported devices in your system.

Monitor device performance

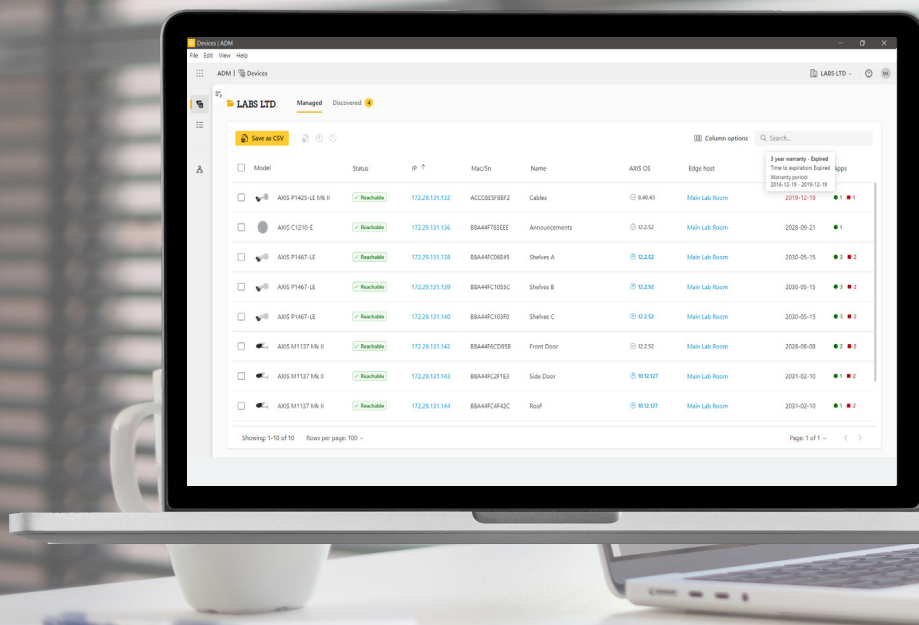
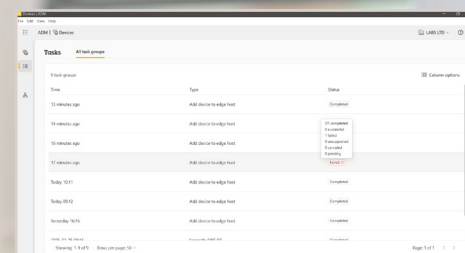
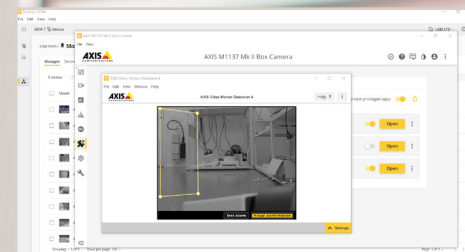
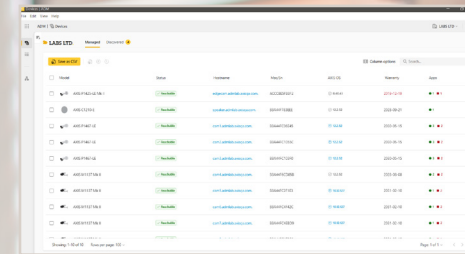
Ensure optimal functionality and identify issues early on. By monitoring device performance, it's possible to enhance security, reduce downtime, and improve efficiency. The software also enables proactive maintenance and helps ensure your devices can be used to their full potential throughout their expected lifetime.

Configure edge analytics

Easily configure your video and audio analytics to enable real-time data processing for faster insights, smarter decision-making, and increased operational efficiency. By streamlining analytics setup, you can quickly start benefiting from enhanced situational awareness and improved response times.

Get full control over each site

Gain valuable insights and a clear overview of the status of each site. This helps ensure efficient control, streamlined troubleshooting, and proactive decision-making.



Apply and maintain safeguards

This cloud-based software helps ensure the security of your system and makes it easy to apply and maintain safeguards throughout a device's lifetime.

Get the latest security updates automatically

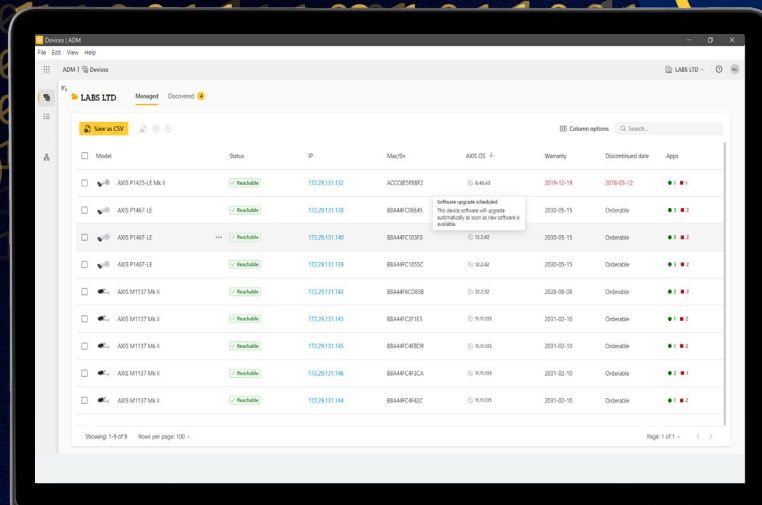
Trust Axis to always provide the latest patches and features through automatic upgrades, either scheduled or immediate.

Install software

Upgrade multiple devices at once or select specific devices for manual upgrades – giving you the flexibility to manage your deployments according to your needs, while keeping your systems secure with the latest bug fixes and vulnerability patches.

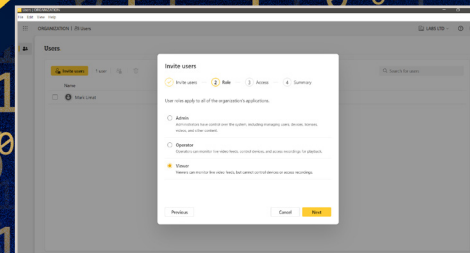
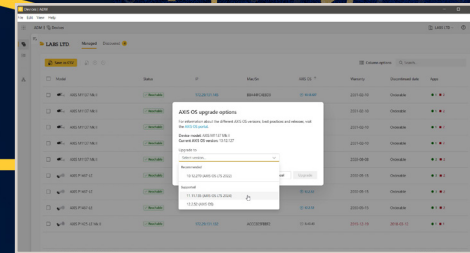
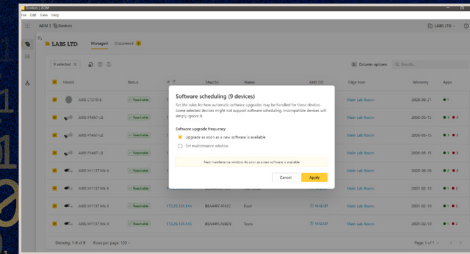
Manage users and permissions

With Identity and Access Management, it's possible to control user access and permissions and ensure data confidentiality.



The screenshot shows the 'Devices' page in the Axis Device Manager Edge interface. It displays a table of devices with columns for Model, Status, IP, MAC, AXOS OS, Warranty, Discontinued date, and Apps. A tooltip for the first device indicates that a software upgrade is scheduled.

Model	Status	IP	MAC	AXOS OS	Warranty	Discontinued date	Apps
AXIS P1435-LE M/L	Ready to upgrade	192.28.131.132	ACC0B5F8F2	6.40.0	2019-12-19	2019-05-12	1
AXIS P1467-LE	Ready to upgrade	192.28.131.138	BB44FC0E45	6.40.0	2020-05-15	Orderable	1
AXIS P1467-LE	Ready to upgrade	192.28.131.140	BB44FC0E0F	6.40.0	2020-05-15	Orderable	1
AXIS P1467-LE	Ready to upgrade	192.28.131.139	BB44FC0E0C	6.40.0	2020-05-15	Orderable	1
AXIS M1137 M/L	Ready to upgrade	192.28.131.142	BB44FC0E08	6.40.0	2020-05-15	Orderable	1
AXIS M1137 M/L	Ready to upgrade	192.28.131.143	BB44FC0E03	6.40.0	2020-05-15	Orderable	1
AXIS M1137 M/L	Ready to upgrade	192.28.131.145	BB44FC0E09	6.40.0	2020-05-15	Orderable	1
AXIS M1137 M/L	Ready to upgrade	192.28.131.146	BB44FC0E0A	6.40.0	2020-05-15	Orderable	1
AXIS M1137 M/L	Ready to upgrade	192.28.131.144	BB44FC0E0C	6.40.0	2020-05-15	Orderable	1



How to access AXIS Device Manager Edge

AXIS Device Manager Edge is easily accessible from My Systems web portal using any browser

With simple and convenient single sign-on via My Systems web portal, you can quickly sign in with your My Axis account and remotely access, maintain, and manage your Axis devices and online applications at any time, from anywhere. And thanks to secure remote access, you can remotely access your system without compromising security.

How to access AXIS Device Manager Edge:

- > via [My Systems web portal](#)
- > via AXIS Device Manager Edge [desktop application](#)

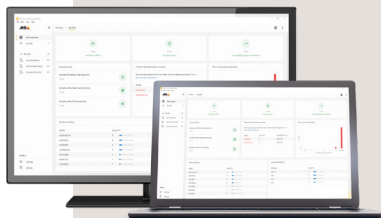
For more information, please visit:

www.axis.com/products/axis-device-manager-edge

Do you need to efficiently manage, monitor, and maintain your Axis devices across multiple sites?

AXIS Device Manager Extend is an advanced device management software offering an aggregated dashboard for total system awareness and complete control.

www.axis.com/products/axis-device-manager-extend



About Axis Communications

Axis enables a smarter and safer world by improving security, safety, operational efficiency, and business intelligence. As a network technology company and industry leader, Axis offers video surveillance, access control, intercoms, and audio solutions. These are enhanced by intelligent analytics applications and supported by high-quality training.

Axis has around 5,000 dedicated employees in over 50 countries and collaborates with technology and system integration partners worldwide to deliver customer solutions. Axis was founded in 1984, and the headquarters are in Lund, Sweden.