

AXIS Optimizer for XProtect[®]

December 2025

Metadata dashboards



AI-powered data analysis

Contents

INTRODUCTION	3
1. STEP-BY-STEP INSTRUCTIONS	4
1.1. Open Axis Insights dashboards	4
1.2. Create your own dashboard	5
1.3. Deep dive into chart statistics	8
1.4. Charts tool tips	9
1.5. Configure your dashboard	9
1.6. Shorten loading times	10
1.7. Auto update live data	10
1.8. Set permissions for the security groups	10
1.9. Add license plate metadata	10
2. VALUABLE INSIGHTS FOR ADMINISTRATORS AND OPERATORS	11
2.1. Administrator insights	11
2.2. Operator insights	12
3. SUPPORT TO GET YOU STARTED	13
3.1. About AXIS Optimizer for XProtect	13

Introduction

AXIS Optimizer Data Insights metadata dashboards provide an efficient way for XProtect users to gain an overview of data produced from connected Axis devices. It turns device metadata into actionable insights about the site in the form of graphs showing statistics, trends, and anomalies.

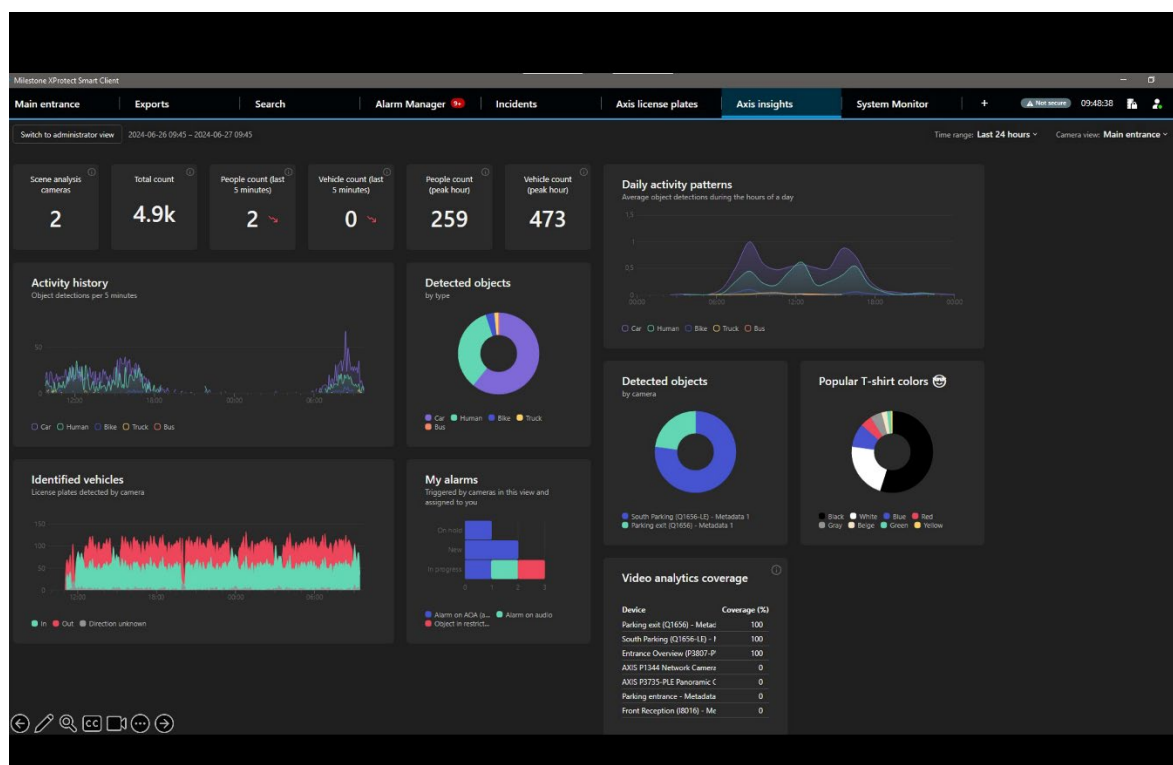
Separate Smart Client dashboards are available for both administrator and operator roles, and it's also possible to create your own dashboards with customized charts to visualize the data you want from your system. Operators get actionable information from aggregated data visualized in the form of detailed graphs from a range of data sources*. Administrators gain system-wide device online/offline status as well as active system alarms and events.

Requirements

- Axis devices running AXIS OS 10.6 with either an MLPU or DLPU can generate object classification metadata. Please refer to the device for details about its supported object classes and attributes.
- Axis device with scene analysis enabled
- Camera time must be synchronized with NTP
- Install your choice of XProtect 2022 R2 or later:
 - XProtect Express+
 - XProtect Professional+
 - XProtect Expert
 - XProtect Corporate
 - XProtect Essential+
- Install the latest version of AXIS Optimizer on the Management Client

*Data sources include AXIS OS, supported analytic applications, and native VMS alarms.

1. Step-by-step instructions

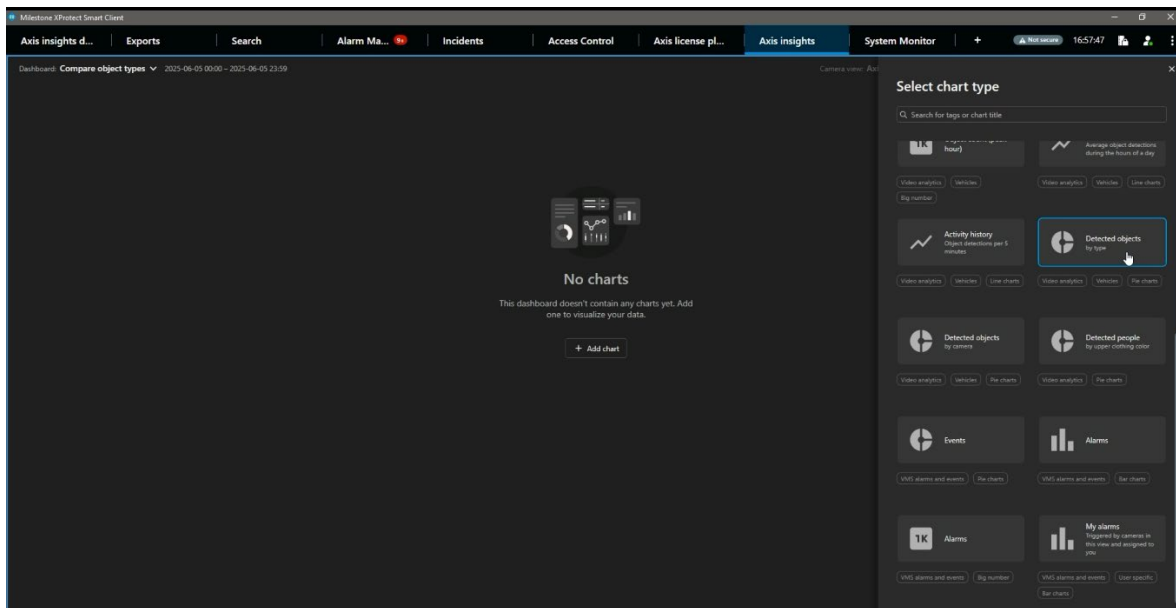


1.1. Open Axis Insights dashboards

Go to **Smart Client** and click **Axis Insights**.

Axis insights dashboard opens and starts loading live data and creating charts and graphs. There are two dashboard views available- one for operators and one for admins. Or you can select **Add dashboard** from the drop-down list to create your own dashboard view.

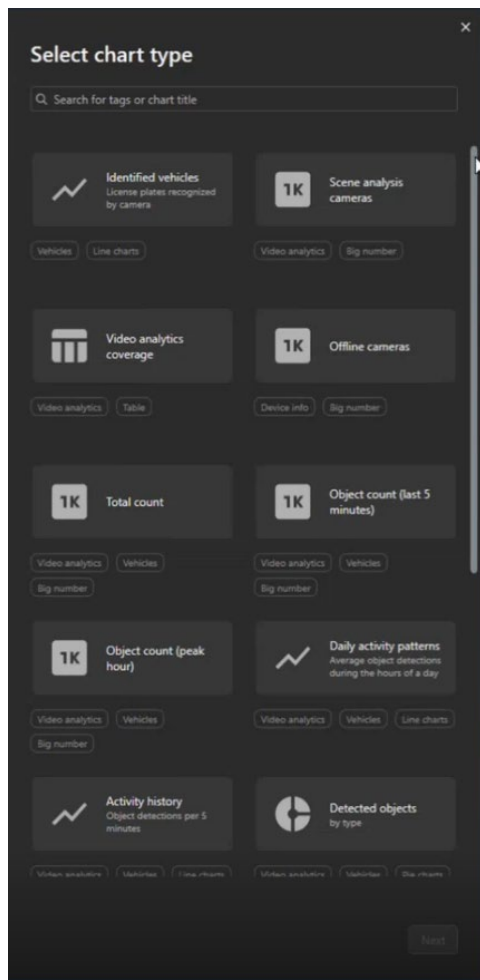
Note: Data loading can take some time- the progress bar at the top shows the loading status of the data. The progress bar circle stops spinning when the chart data is finished loading. It's possible to shorten loading times by enabling consolidated metadata ([see section 1.6](#)).



1.2. Create your own dashboard

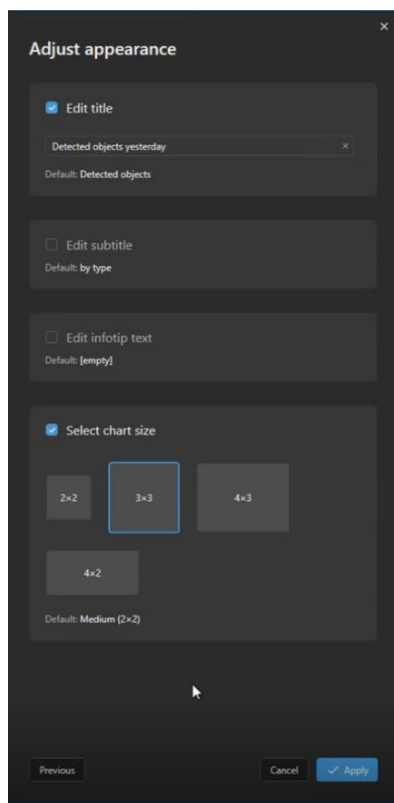
1. Select **Add dashboard**. The new dashboard window opens.
2. Enter a name for your dashboard and click **Apply**. A blank dashboard view opens. You can now add charts one-by-one and customize them according to your needs.

Axis Insights includes a library of different charts to help you get started including bar, line, and pie charts as well as big number charts. Each chart includes descriptive tags to help you easily find a chart to meet your needs. For instance, there's charts for detected objects, VMS alarms and events, activity patterns, and more. You can add all available charts to your dashboard, but data is displayed based on your permission and user rights, as defined in XProtect. This means, for example, you can add and customize the chart for offline cameras, but if you don't have administrator right, the chart will appear empty.

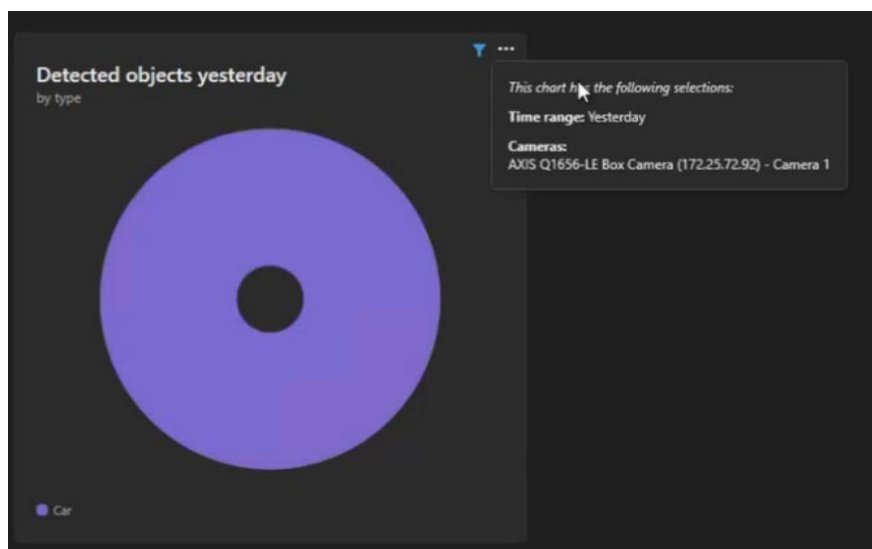


3. Select a chart and customize it. For instance, if you select the chart “Detected Objects by type”, you can select **vehicles** as the object type, set a specific time range (e.g. **today** or **yesterday**), and select what cameras to source the data from.
4. Select either individual cameras or a camera group from where to source the data. If you don’t customize the chart, it will use the main dashboard’s global settings for the object type, time range, and camera.

5. Change the appearance of the chart including chart title, subtitle, tooltip, and size:



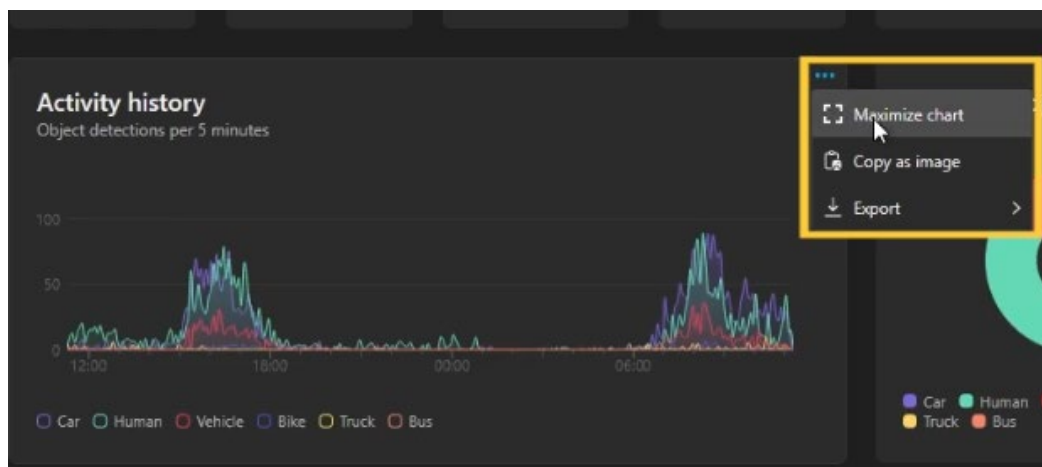
6. Click **Apply** and the chart is now added to your dashboard. **Note:** A blue filter icon at the top right of the chart denotes that the chart's settings are different to your dashboard's default selections.



7. You can add as many charts to your dashboard as you need. For instance, you might want to compare object data from yesterday and today. Or you can add a chart for objects detected by different cameras on different sites or different entrances to your premises.
8. When you finish customizing your dashboard, click **OK**. Your dashboard now appears in the drop-down list, and you can switch between the different dashboards.

1.3. Deep dive into chart statistics

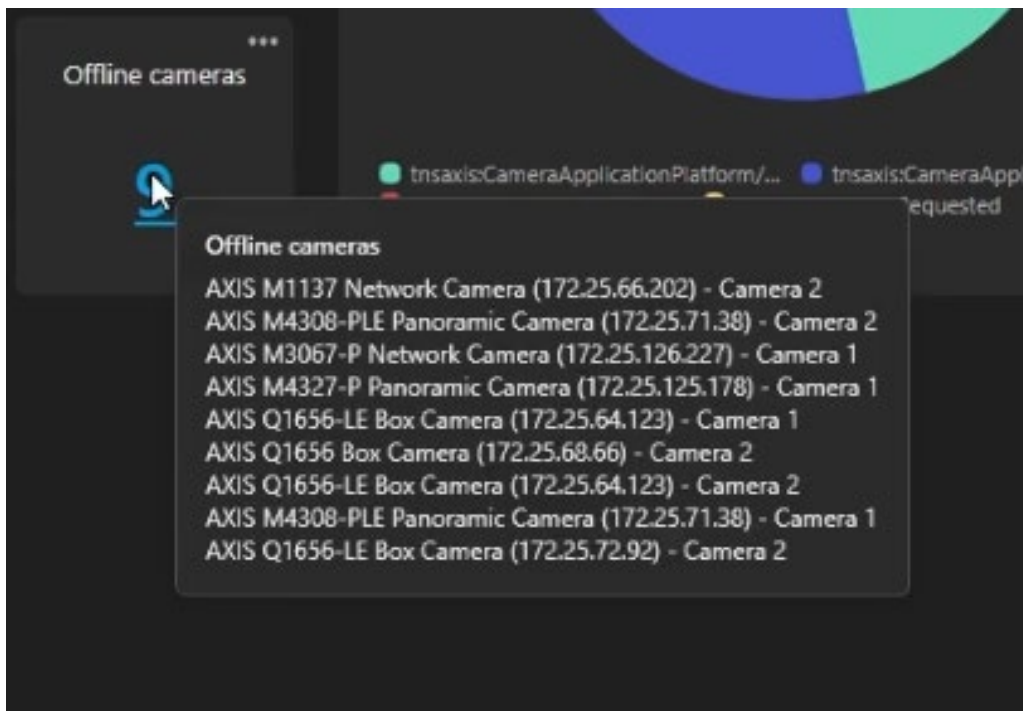
1. Click the 3 dots at the top right of a chart. A menu opens with 3 options:



- a. Click **Maximize** to back to the full dashboard
 - b. Click **Copy as Image** to copy a single chart to the computer's clipboard and paste it into a document, presentation, or email
 - c. Click **Export** and select either PNG image or CSV file
2. A PNG image can be copied and pasted into other programs. A CSV file can be opened in a spreadsheet program allowing users to analyze dashboard data and compare it with data from other systems
 3. Click **Reset** to return to the chart's original state

1.4. Charts tool tips

1. Hover the mouse cursor over the number. The color of the number changes to blue indicating that more information is available in a tool tip.
2. Click on the number to see the additional information. For example, if a chart shows there's offline cameras, click on the number to drill down and find out which cameras are offline.



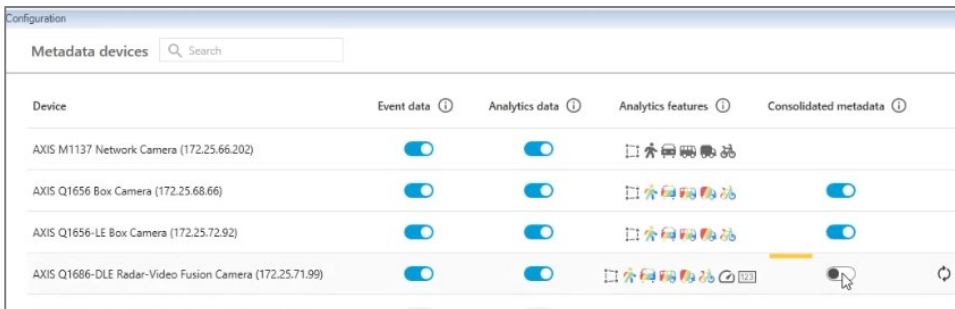
1.5. Configure your dashboard

1. Check that the camera supports AXIS Object Analytics. See analytics in Axis Product Selector: www.axis.com/support/tools/product-selector
2. Check that the camera's date and time are set correctly.
3. Ensure metadata is enabled for the camera in the Management Client.
 - a. Go to **Devices > Metadata** and select your device.
 - Click **Record** and ensure Recording is enabled.
 - Click **Settings** and ensure **Analytics data** is enabled.

1.6. Shorten loading times

It's possible to shorten loading times by enabling consolidated metadata on the cameras populating the dashboards.

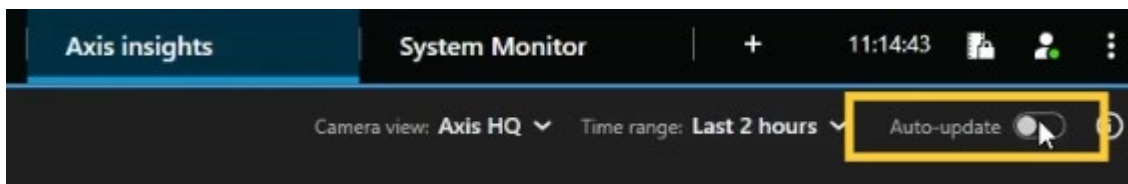
1. In the management client, go to the AXIS Optimizer Metadata and search Control Panel: <https://help.axis.com/en-us/axis-optimizer-for-xprotect#metadata-and-search>
2. Enable consolidated metadata for each camera for faster loading time.



Device	Event data ⓘ	Analytics data ⓘ	Analytics features ⓘ	Consolidated metadata ⓘ
AXIS M1137 Network Camera (172.25.66.202)	<input type="checkbox"/>	<input type="checkbox"/>	<input type="checkbox"/>	<input type="checkbox"/>
AXIS Q1656 Box Camera (172.25.68.66)	<input type="checkbox"/>	<input type="checkbox"/>	<input type="checkbox"/>	<input type="checkbox"/>
AXIS Q1656-LE Box Camera (172.25.72.92)	<input type="checkbox"/>	<input type="checkbox"/>	<input type="checkbox"/>	<input type="checkbox"/>
AXIS Q1686-DLE Radar-Video Fusion Camera (172.25.71.99)	<input type="checkbox"/>	<input type="checkbox"/>	<input type="checkbox"/>	<input type="checkbox"/>

1.7. Auto update live data

Use the auto-update toggle to continuously load data and display it in charts. This is ideal when displaying the dashboard on a separate monitor.



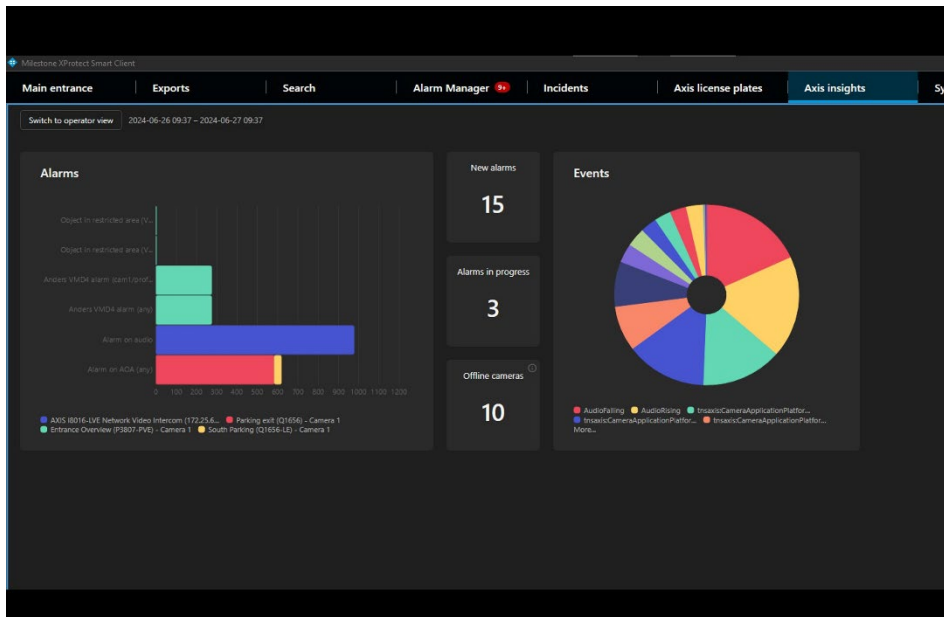
1.8. Set permissions for the security groups

1. Go to Site **Navigation** > **Security** > **Roles**.
2. Select a role.
3. Go to **Cameras**. Select **Read**.
4. Go to **Metadata**. Select **Read**, **Live**, and **Playback**.

1.9. Add license plate metadata

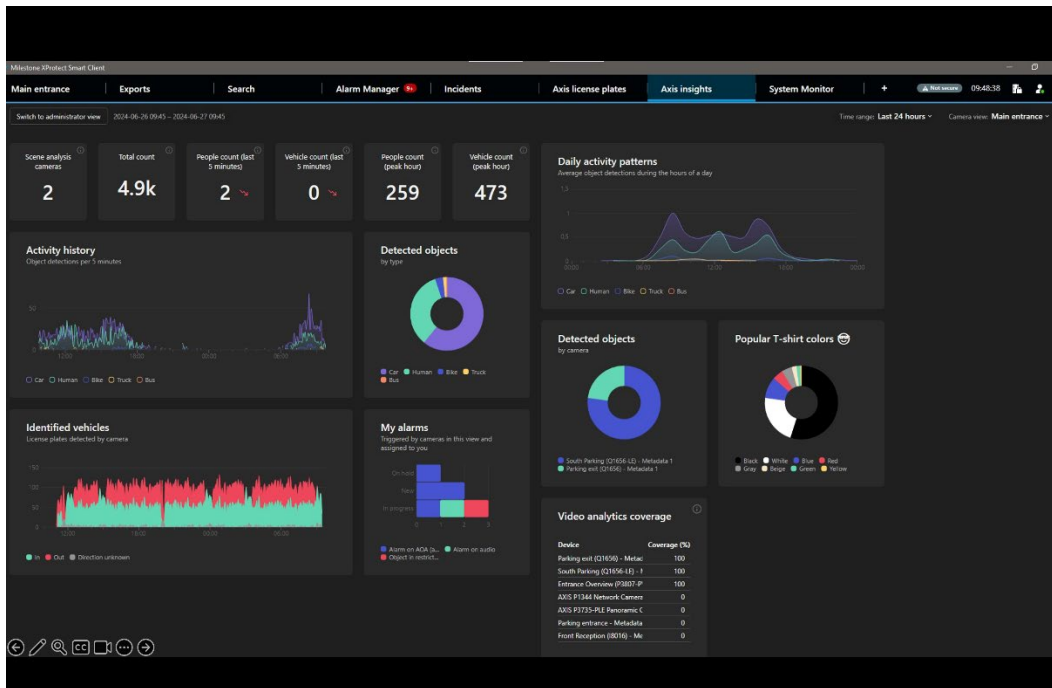
Note: To add license plate metadata from supported analytics, see Configure Axis license plates: <https://help.axis.com/en-us/axis-optimizer-for-xprotect#configure-license-plate-search-tab>

2. Valuable insights for administrators and operators



2.1. Administrator insights

System administrator roles gain a system-wide overview of their device online/offline status, as well as all active system alarms and events. This helps them improve their situational awareness, so they can ensure everything is up and running. For instance, they'll be notified if cameras in the system require attention.



2.2. Operator insights

Operator roles gain visualized, aggregated data from their existing device views. This data is presented as graphs showing alarms, statistics, trends, and anomalies. So, operators can easily analyze data, gain deeper insights, and take necessary actions like responding to real-time events or using statistics to help optimize operations.

3. Support to get you started

Watch AXIS Optimizer how to videos

www.axis.com/dam/public/permalink/244212/overview-of-axis-optimizer-insights-dashboards-en-US_244212.mp4

See online user manual

<https://help.axis.com/en-us/axis-optimizer-for-xprotect>

Download more how to guides

www.axis.com/products/axis-optimizer-for-milestone-xprotect/savings

Step-by-step workflows for specific jobs-to-be-done may change over time. Please refer to the online user manual for the latest descriptions.

<https://help.axis.com/en-us/axis-optimizer-for-milestone-xprotect>

3.1. About AXIS Optimizer for XProtect

AXIS Optimizer is a suite of integrations that optimizes and unites Axis-XProtect systems. It ensures all users save considerable time and effort while getting the most out of their system. Continuously updated to cover new Axis offerings, this suite is available for free as a manual download from Axis.com or via XProtect Update Manager for one-click deployment across multiple systems. This application offers one optimized and united Axis-XProtect system that's easy to install, deploy, use, and update. It's also possible to add on new capabilities such as uniting video surveillance with access control, audio, AI-based automation, forensic search and data analysis, and much more. And everything is available in and optimized for XProtect.