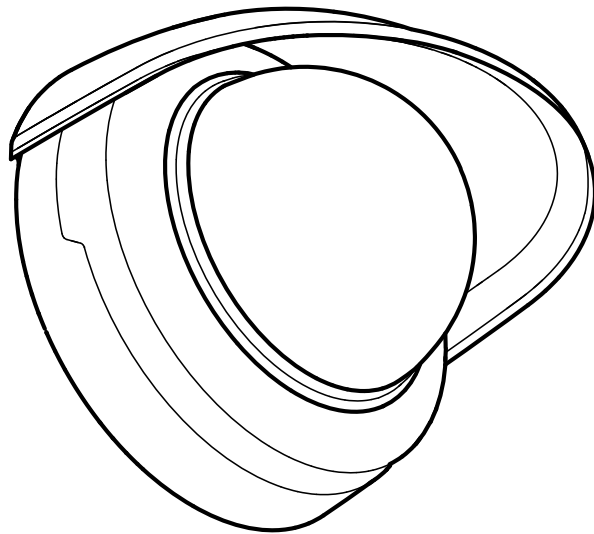


AXIS M42-LVE series

AXIS M4225-LVE Dome Camera

AXIS M4227-LVE Dome Camera

AXIS M4228-LVE Dome Camera



Repainting instructions

AXIS M42-LVE series

Impact on warranty

Impact on warranty

This product is approved for repaint by Axis, provided that you follow the instructions in this document and at axis.com/warranty-implication-when-repainting.

Risks with repainting

There are several risks when disassembling or assembling an Axis product. There is always a certain yield loss during assembly. Training of operators and the use of correct tools mediates some of the problems but they can never be fully avoided. Some of the risks include:

ESD Damage – Always handle the product in an ESD safe environment. Even if precautions are taken there is always a risk of ESD damage. The damage can remain undetected and cause problems during the lifetime of the equipment.

Dust contamination – Opening a camera may expose the lens and sensor to dust or paint. Dust will affect the optical performance. Lenses need to be disassembled in a dust-free environment, preferably a cleanroom.

Paint overspray – Masking the different components of the equipment is critical. Failure to mask sensitive areas can cause problems with assembling the equipment. Any areas that are not painted at factory or have a different surface treatment than the rest of the parts (threads, ground and electrical contact surfaces) must also be masked to ensure function.

AXIS M42-LVE series

Repaint the product

Repaint the product

Preparations

- If applicable, disassemble the device according to the instructions in this document.
- Clean all parts that will be repainted thoroughly to remove grease, dust, or oil.
- To ensure reassembly and functionality of the product, mask any openings (for example for screws, LED indicators, or microphones) before you paint.
- To avoid unwanted reflections, mask the inside of the weathershield before you paint.

Pretreatment of parts

Before you apply a new coating, we recommend the following pretreatment:

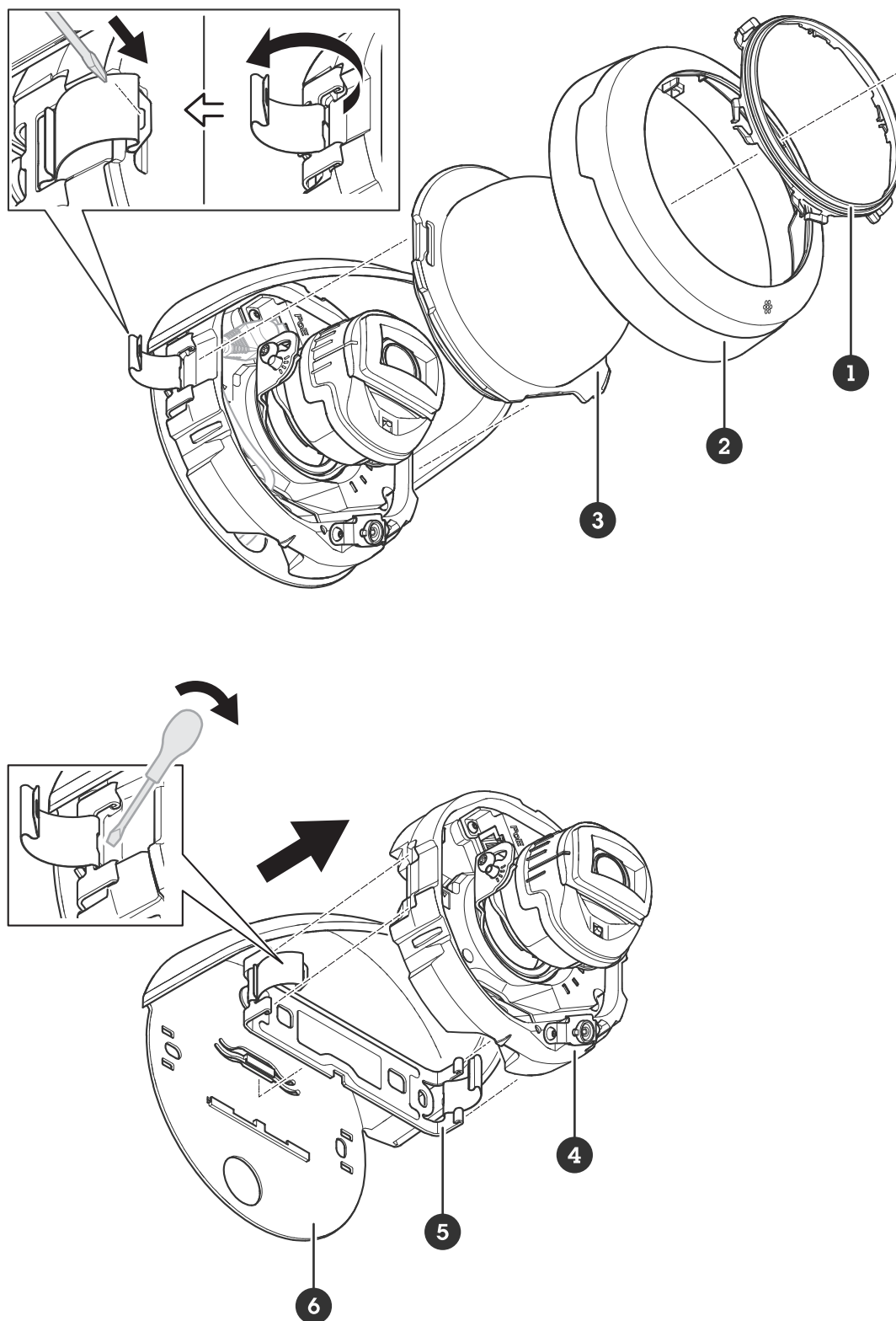
- Apply a primer layer suitable for the specific material, to increase adhesion to the parts.

The material used in the product is PC Makrolon 6487RE 700190.

AXIS M42-LVE series

Repaint the product

Disassembly



AXIS M42-LVE series

Repaint the product

- 2 Cover top
- 3 Dome
- 4 Camera unit
- 5 Mounting bracket
- 6 Weathershield

1. Turn the cover top counterclockwise and remove it.
2. Use a flat screwdriver to release the clamp brackets from the camera and the dome.
3. Remove the camera unit with the dome attached.
4. Remove the dome from the camera unit.

Note

Be careful with the dome gasket, it's important that this is intact, clean, and in place when you assemble the camera unit and dome.

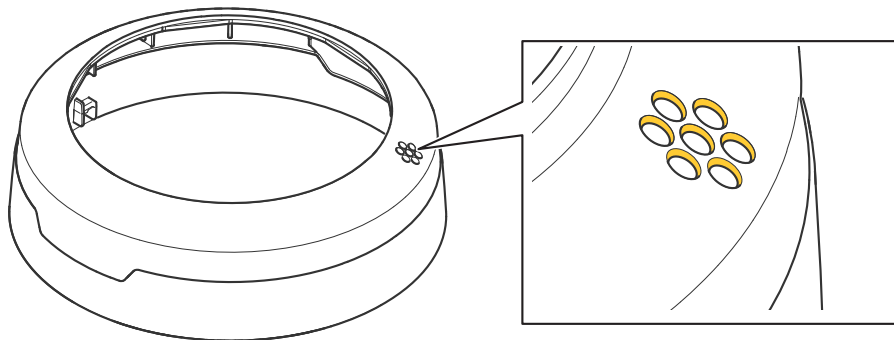
5. Disconnect the POE cable from the camera.
6. Remove the ring dome from the cover top.
7. To remove the weathershield, remove the screws from the bracket and weathershield.
8. Remove the bracket from the weathershield.

Repainting

1. Make sure you have done all necessary preparations of the weathershield and cover top, see *Preparations on page 3*.

Important

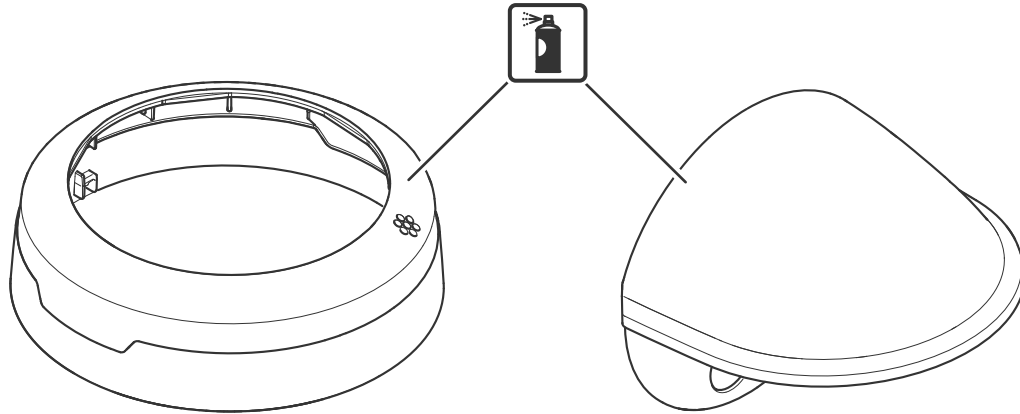
Mask the holes for the acoustic sensor.



2. Apply a thin and even layer of spray paint according to the instructions of the paint manufacturer.

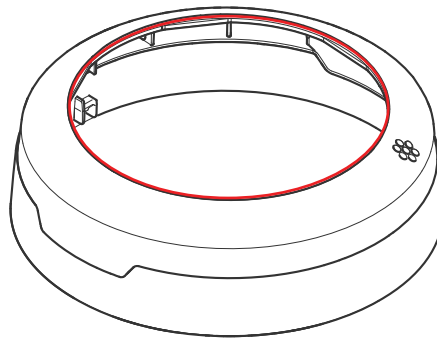
AXIS M42-LVE series

Repaint the product



Important

Avoid paint build-up in the area marked with red color.



3. Let the paint dry.
4. To get better coverage and clearer color, apply a second layer of spray paint.
5. When the paint is dry, remove the masking and reassemble the product.

Reassembly

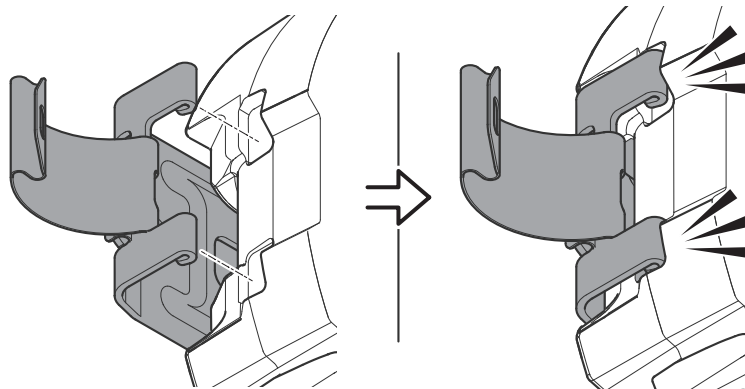
1. If you use a weathershield, fasten the bracket to the weathershield and screw back in place.
2. Connect the POE cable to the camera.
3. Attach the dome to the camera unit.
4. Attach the camera unit to the bracket.

Note

The camera must be attached with all 4 clamps. The 2 clamp brackets attach the dome to the camera unit.

AXIS M42-LVE series

Repaint the product



5. Put the cover top in place on the camera and push until you hear a click.

Important

Make sure that the holes for the sensor on the cover top goes over the acoustic sensor.

