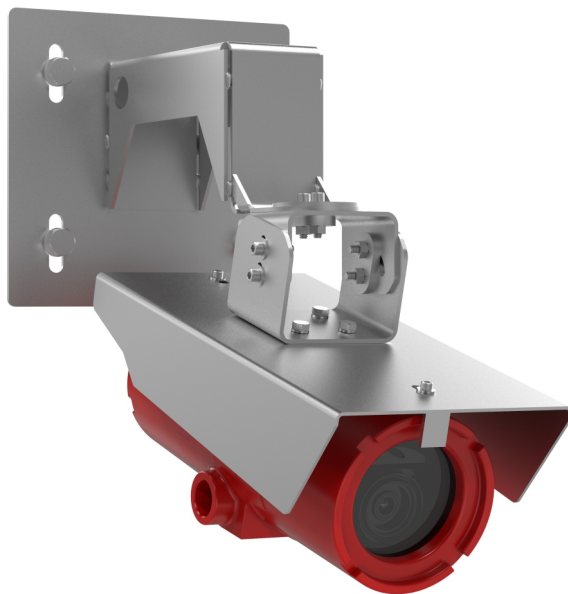


F101-A XF Q1785 Explosion-Protected Network Camera

First-class fixed box for hazardous areas

F101-A XF Q1785 features a 32x optical zoom for 2 MP/HDTV 1080p image quality up to 60 fps. It's certified worldwide with Class I/II/III, Division 1 and Zone 1 for use in explosion-prone applications. It's enclosed in an IP66 rated aluminum red housing and can withstand extreme temperatures from -40 °C to 60 °C (-40 °F to 140 °F). It comes with AXIS Guard Suite pre-installed and Active Gatekeeper. It includes Electronic Image Stabilization, Forensic WDR, Lightfinder, barrel distortion correction and scene profiles. Plus, built-in PoE support and Zipstream for simplified installation and lower bandwidth and storage requirements.

- > **Certified for Class I/II/III, Division 1 and Zone 1**
- > **32x optical zoom**
- > **2 MP, HDTV 1080p at up to 60 fps**
- > **Forensic WDR and Lightfinder**
- > **-40 °C to 60 °C (-40 °F to 140 °F)**



F101-A XF Q.1785 Explosion-Protected Network Camera

Support for AXIS Camera Application Platform enabling installation of third-party applications, see axis.com/acap

| | |
|-----------------------------------|--|
| Camera | |
| Image sensor | 1/2.8" progressive scan RGB CMOS |
| Lens | Varifocal 4.3–137 mm, F1.4–4.0 Horizontal field of view: 60°–2.3° Vertical field of view: 39°–1.3° Autofocus |
| Minimum illumination | Color: 0.16 lux at 50 IRE F1.4 B/W: 0.03 lux at 50 IRE F1.4 |
| Shutter speed | 1/66500 s to 1 s |
| System on chip (SoC) | |
| Model | ARTPEC-6 |
| Memory | 1 GB RAM, 512 MB Flash |
| Video | |
| Video compression | H.264 (MPEG-4 Part 10/AVC) Baseline, Main and High Profiles Motion JPEG |
| Resolution | 1920x1080 HDTV 1080p (16:9) to 160x120 (4:3) Maximum pixel density with 32x optical zoom: 25 m (82 ft): 1912 px/m 50 m (164 ft): 956 px/m 250 m (820 ft): 191 px/m |
| Frame rate | With WDR: Up to 30/25 fps (60/50 Hz) in all resolutions Without WDR: Up to 60/50 fps (60/50 Hz) in all resolutions |
| Video streaming | Multiple, individually configurable streams in H.264 and Motion JPEG Ziptream technology in H.264 Controllable frame rate and bandwidth VBR/MBR H.264 |
| Image settings | Saturation, contrast, brightness, sharpness, Forensic WDR, defogging, white balance, exposure mode, exposure zones, compression, mirroring of images, electronic image stabilization, barrel distortion correction, text and image overlay, dynamic text and image overlay, privacy masks Rotation: auto, 0°, 90°, 180°, 270° including Corridor Format Scene profiles: forensic, vivid, traffic overview, backlight entrance |
| Pan/Tilt/Zoom | Digital ptz, 32x optical zoom, 12x digital zoom, preset positions |
| Network | |
| Security | Password protection, IP address filtering, HTTPS ^a encryption, IEEE 802.1X ^a network access control, digest authentication, user access log, centralized certificate management, brute force delay protection |
| Network protocols | IPv4, IPv6 USGv6, ICMPv4/ICMPv6, HTTP, HTTP/2, HTTPS ^a , TLS ^a , QoS Layer 3 DiffServ, FTP, SFTP, CIFS/SMB, SMTP, mDNS (Bonjour), UPnP [®] , SNMP v1/v2c/v3 (MIB-II), DNS/DNSv6, DDNS, NTP, NTS, RTSP, RTP, SRTP, TCP, UDP, IGMPv1/v2/v3, RTCP, ICMP, DHCPv4/v6, ARP, SSH, LLDP, CDP, MQTT v3.1.1, Secure syslog (RFC 3164/5424, UDP/TCP/TLS), Link-Local address (ZeroConf) |
| System integration | |
| Application Programming Interface | Open API for software integration, including VAPIX [®] and AXIS Camera Application Platform; specifications at axis.com One-click cloud connection ONVIF [®] Profile G, ONVIF [®] Profile S, and ONVIF [®] Profile T, specification at onvif.org |
| Event triggers | Analytics, supervised external input, edge storage events, virtual inputs through API, shock detection MQTT subscribe |
| Event actions | Pre- and post-alarm video buffering File upload: FTP, SFTP, HTTP, HTTPS, network share and email MQTT publish Notification: email, HTTP, HTTPS, TCP and SNMP trap |
| Data streaming | Event data |
| Built-in installation aids | Remote zoom, pixel counter, leveling assistant, autorotation |
| Analytics | |
| Applications | Included AXIS Motion Guard, AXIS Fence Guard, AXIS Loitering Guard, autotracking 2, active gatekeeper Basic analytics (not to be compared with third-party analytics): object removed, enter/exit detector, object counter |
| General | |
| Casing | IP66-rated, powdercoated aluminum chassis De-icing control ^b Casing manufactured and certified by Spectrum Camera Solutions, LLC |
| Sustainability | PVC free |
| Power | Camera: Power over Ethernet (PoE) IEEE 802.3af/802.3at Type 1 Class 3, typical 7.7 W, max 8.7 W Heater: 12–30 V AC/DC, 25 W 12–30 V AC/DC for heaters is required for operating temperatures below 0 °C (32 °F). |
| Connectors | 2 x 3/4" NPT cable entries RJ45 10BASE-T/100BASE-TX PoE 2-pin terminal block connector for heater |
| Storage | Pre-installed AXIS Surveillance microSDXC Card 128 GB Support for SD card encryption (AES-XTS-Plain64 256bit) Support for recording to network-attached storage (NAS) For SD card and NAS recommendations see axis.com |
| Operating conditions | Hazardous location operating temperature: Zone system: -50 °C to 60 °C (-58 °F to 140 °F) Class/Division system: -40 °C to 60 °C (-40 °F to 140 °F) Humidity 10–100% RH (condensing) See section Power for requirements in temperatures below 0 °C (32 °F). |
| Storage conditions | -40 °C to 65 °C (-40 °F to 149 °F) |
| Approvals | EMC EN 55032 Class A, FCC Part 15 Subpart B Class A, ICES-003 Class A, VCCI Class A, RCM AS/NZS CISPR 32 Class A, EN 55024, EN 61000-6-1, EN 61000-6-2 Environment ANSI/NEMA 250 4X, ANSI/IEC/EN/CAN/CSA-C22.2 60529 IP66, CSA-C22.2 No. 0.5, CSA-C22.2 No. 25, CSA-C22.2 No. 30, CSA-C22.2 No. 94.2 Explosion FM Class 3600:2018, FM Class 3615:2018, FM Class 3616:2011, ANSI/ISA/EN/IEC/CAN/CSA-C22.2 60079-0, ANSI/UL/EN/IEC/CAN/CSA-C22.2 60079-1, ANSI/UL/EN/IEC/CAN/CSA-C22.2 60079-31 Network NIST SP500-267 |
| Certifications | USA: Class I Division 1 Groups BCD T6 Ta = -40°C to 60°C, Type 4X, IP66 Class II/III Division 1 Groups EFG Ta = -40°C to 60°C, Type 4X, IP66 Class I, Zone 1, AEx db IIB+H2 Gb Ta = -50°C to 60°C, Type 4X, IP66 Zone 21, AEx tb IIIC Db Ta = -50°C to 60°C, Type 4X, IP66 Certificate: FM18US0262X Canada: Class I Division 1 Groups BCD T6 Ta = -50°C to 60°C, Type 4X, IP66 Class II/III Division 1 Groups EFG Ta = -50°C to 60°C, Type 4X, IP66 Class I, Zone 1, Ex db IIB+H2 T5 Gb Ta = -50°C to 60°C, Type 4X, IP66 Zone 21, Ex tb IIIC T85°C Db Ta = -50°C to 60°C, Type 4X, IP66 Certificate: FM18CA0126X ATEX: II 2 G Ex db IIB+H2 T5 Gb Ta = -50°C to 60°C, IP66 II 2 D Ex tb IIIC T85°C Db Ta = -50°C to 60°C, IP66 Certificate: FM18ATEX0073X IECEx: Ex db IIB+H2 T5 Gb Ta = -50°C to 60°C, IP66 Ex tb IIIC T85°C Db Ta = -50°C to 60°C, IP66 Certificate: IECEx FMG 18.0029X |
| Dimensions | 13.85 x 7.20 x 6.01 in (352 x 183 x 153 mm) |
| Weight | 14 lb (6.2 kg) |
| Included accessories | Installation Guide, Windows [®] decoder 1-user license, Weathershield, AXIS Surveillance microSDXC Card 128 GB, 3/4" NPT to M20x1.5 thread adapter |

| | | | |
|----------------------------------|--|--|---|
| Optional accessories | Wall Mount, Pole Mount, Corner Mount For more accessories, see axis.com | Warranty | 5-year warranty, see axis.com/warranty |
| Video management software | AXIS Companion, AXIS Camera Station, video management software from Axis Application Development Partners available on axis.com/vms | a. <i>This product includes software developed by the OpenSSL Project for use in the OpenSSL Toolkit. (openssl.org), and cryptographic software written by Eric Young (eay@cryptsoft.com).</i> b. <i>Internal heaters to defrost ice build-up, activated by HTTP API (VAPIX).</i> | |
| Languages | English, German, French, Spanish, Italian, Russian, Simplified Chinese, Japanese, Korean, Portuguese, Traditional Chinese, Dutch, Czech, Swedish, Finnish, Turkish, Thai, Vietnamese | | |