

AXIS Q60 PTZ Network Camera Series

Repainting Instructions

AXIS Q60 PTZ Network Camera Series

Impact on warranty

Impact on warranty

This product is approved for repaint by Axis, provided that you follow the instructions in this document and at www.axis.com/warranty-implication-when-repainting

Risks with repainting

There are several risks when disassembling or assembling an Axis product. There is always a certain yield loss during assembly. Training of operators and the use of correct tools mediates some of the problems but they can never be fully avoided. Some of the risks include:

ESD Damage – Always handle the product in an ESD safe environment. Even if precautions are taken there is always a risk of ESD damage. The damage can remain undetected and cause problems during the lifetime of the equipment.

Dust contamination – Opening a camera may expose the lens and sensor to dust or paint. Dust will affect the optical performance. Lenses need to be disassembled in a dust-free environment, preferably a cleanroom.

Paint overspray – Masking the different components of the equipment is critical. Failure to mask sensitive areas can cause problems with assembling the equipment. Any areas that are not painted at factory or have a different surface treatment than the rest of the parts (threads, ground and electrical contact surfaces) must also be masked to ensure function.

AXIS Q60 PTZ Network Camera Series

Repaint the product

Repaint the product

Preparations

- Disassemble the device according to the instructions in this document.
- Clean all parts to be repainted thoroughly to remove grease, dust, or oil.
- To ensure reassembly and functionality of the product, mask any openings before you paint.

Pretreatment of parts

Depending on the part material and type of paint applied at factory, different pretreatment should be done for the new paint to adhere as well as possible. Clean the parts properly to remove oil, grease and dust.

For more information on the materials used in the product, see its datasheet at www.axis.com

Powder coated parts – Use a primer. Alternatively, remove the original powder coating down to the base material, using fine sandpaper, and clean the parts before painting.

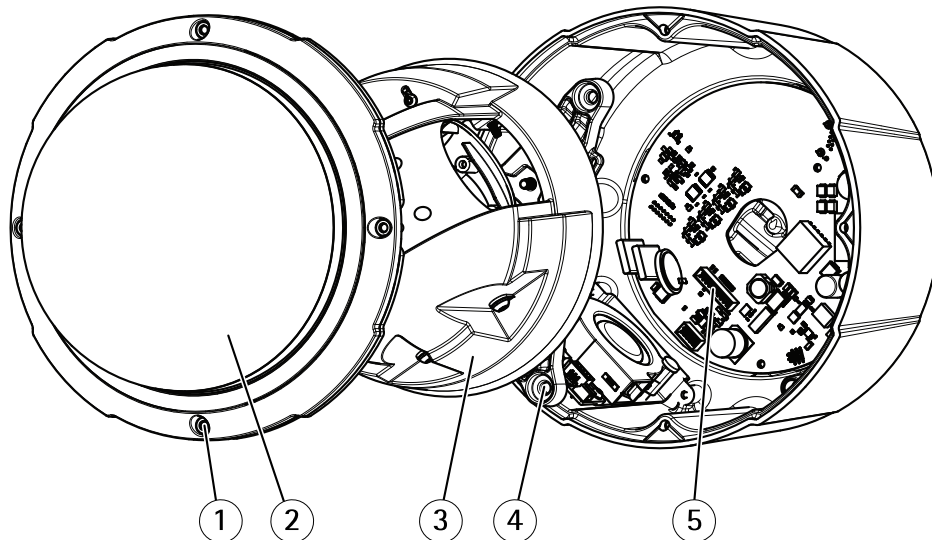
Anodised and chromated parts – Use a primer.

Uncoated stainless steel – No special pretreatment is needed, but make sure that the surface is clean before painting.

Plastic – Use a primer.

Disassembly

Chassis



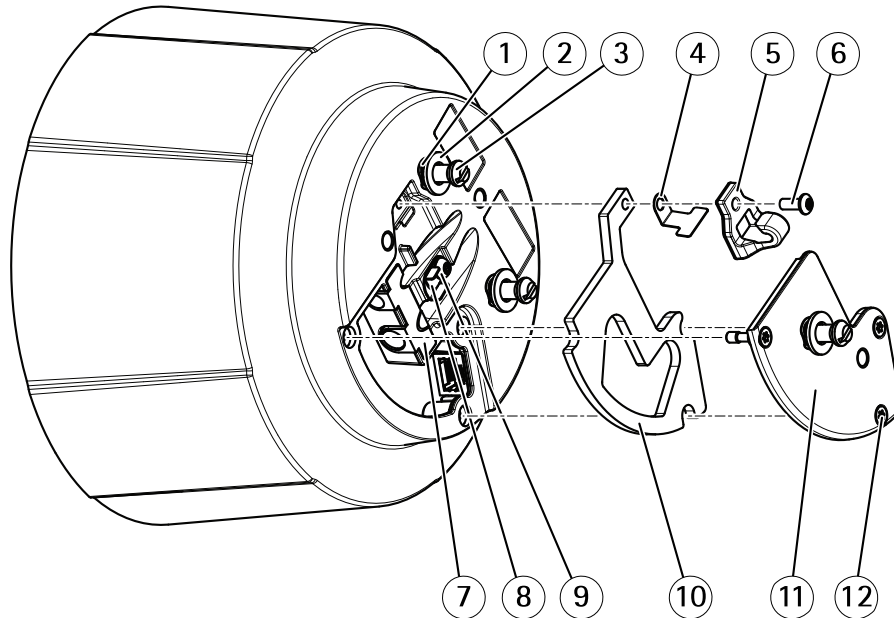
- 1 *Anti loss screw*
- 2 *Dome assembly*
- 3 *Camera assembly*
- 4 *Screw*
- 5 *Power connector*

1. Loosen the four anti loss screws and remove the dome assembly from the camera.

AXIS Q60 PTZ Network Camera Series

Repaint the product

2. Loosen the three screws that hold the camera assembly.
3. Lift up the camera assembly and remove the connector from the power circuit board.



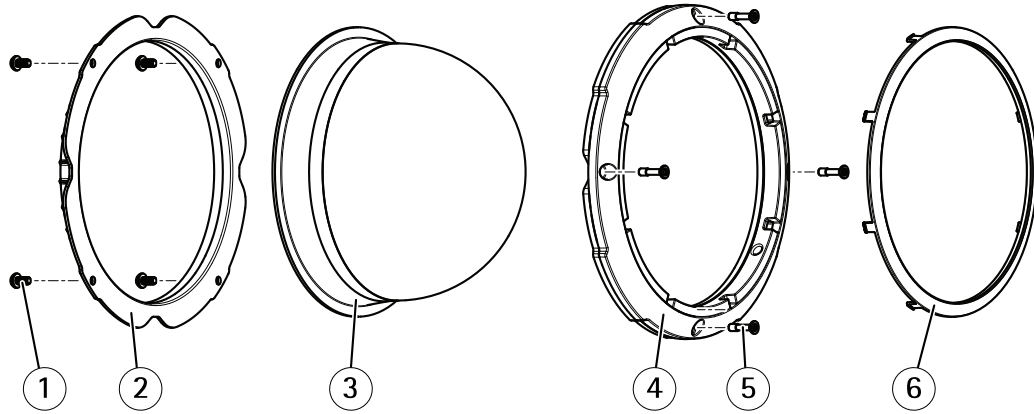
- 1 *Wave spring*
- 2 *Washer*
- 3 *Bayonet screw*
- 4 *Spring*
- 5 *Safety hook*
- 6 *Screw*
- 7 *Cable gasket*
- 8 *Cable holder*
- 9 *Screw*
- 10 *Gasket*
- 11 *Lid assembly*
- 12 *Anti loss screw*

4. Remove the two bayonet screws with washers and wave springs.
5. Remove the screw, the safety hook, and the spring.
6. Remove the screw and the two cable holders.
7. Loosen the three anti loss screws and remove the lid assembly and the gasket.
8. Remove the cable gasket.

AXIS Q60 PTZ Network Camera Series

Repaint the product

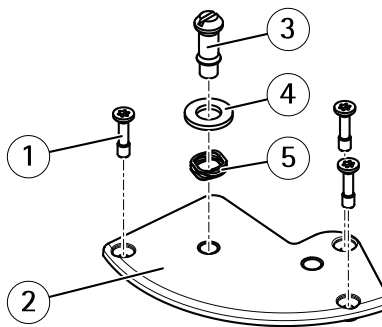
Dome



- 1 Screw
- 2 Dome bracket
- 3 Dome
- 4 Dome ring
- 5 Anti loss screw
- 6 Compass ring

1. Remove the four anti loss screws from the dome ring.
2. Remove the four screws, the dome bracket and the dome.
3. Snap the compass ring of the dome ring.

Lid



- 1 Screw
- 2 Lid
- 3 Bayonet screw
- 4 Washer
- 5 Wave spring

1. Remove the three screws from the lid.
2. Remove the bayonet screw with washer and wave spring.

AXIS Q60 PTZ Network Camera Series

Repaint the product

Masking

Chassis

1. Mask all screw holes.
2. Mask the opening that was covered by the lid assembly.
3. Mask the entire opening in the bottom of the chassis. No paint is allowed inside the chassis.

Dome

1. Mask the dome gasket.
2. Mask all screw holes.

Lid

1. Mask all screw holes.
2. Mask the bottom side of the lid.

Repainting

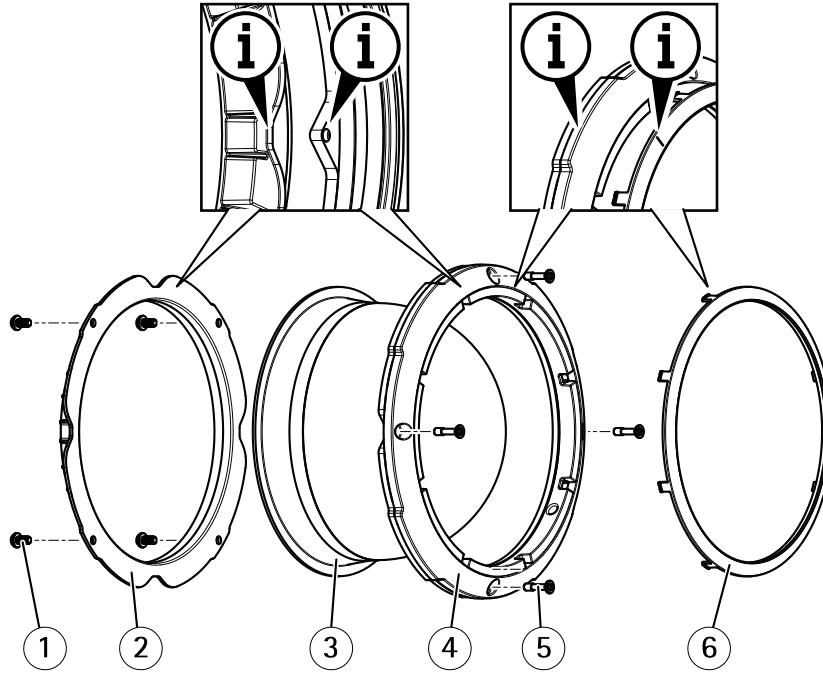
1. Make sure all necessary preparations of the chassis, the dome, and the lid have been made, see *Preparations on page 3*.
2. Apply a thin and even layer of spray paint according to the instructions of the paint manufacturer.
3. Let the paint dry.
4. To get a better coverage and clearer color, apply a second layer of spray paint.
5. When the paint is dry, remove the masking.

AXIS Q60 PTZ Network Camera Series

Repaint the product

Reassembly

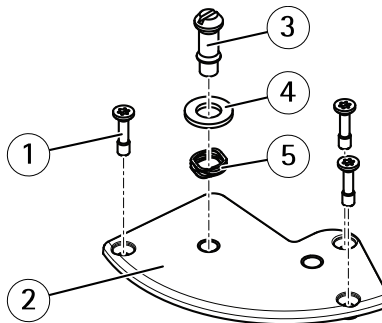
Dome



- 1 Screw
- 2 Dome bracket
- 3 Dome
- 4 Dome ring
- 5 Anti loss screw
- 6 Compass ring

1. Orient the compass ring as shown below and snap it onto the dome ring.
2. Orient the dome bracket as shown below and assemble the dome bracket and the dome with the four screws. Tighten the screws with 0.5 Nm (0.4 lb ft) torque.
3. Fit the four anti loss screws back in the dome ring.

Lid



- 1 Screw

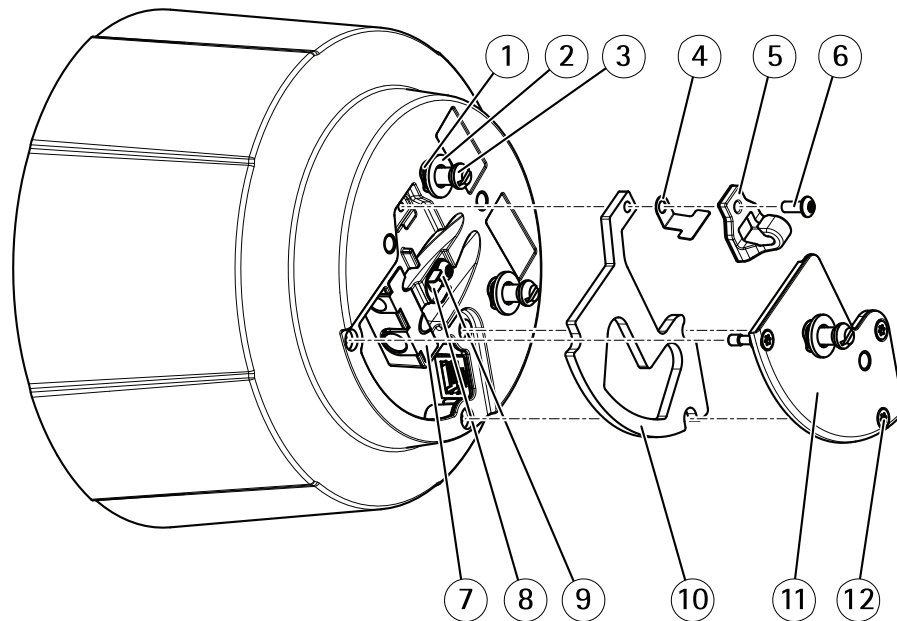
AXIS Q60 PTZ Network Camera Series

Repaint the product

- 2 *Lid*
- 3 *Bayonet screw*
- 4 *Washer*
- 5 *Wave spring*

1. Assemble the bayonet screw with washer and wave spring. Tighten the screws with 1.8 Nm (1.3 lb ft) torque.
2. Fit the three screws back in the lid assembly.

Chassis

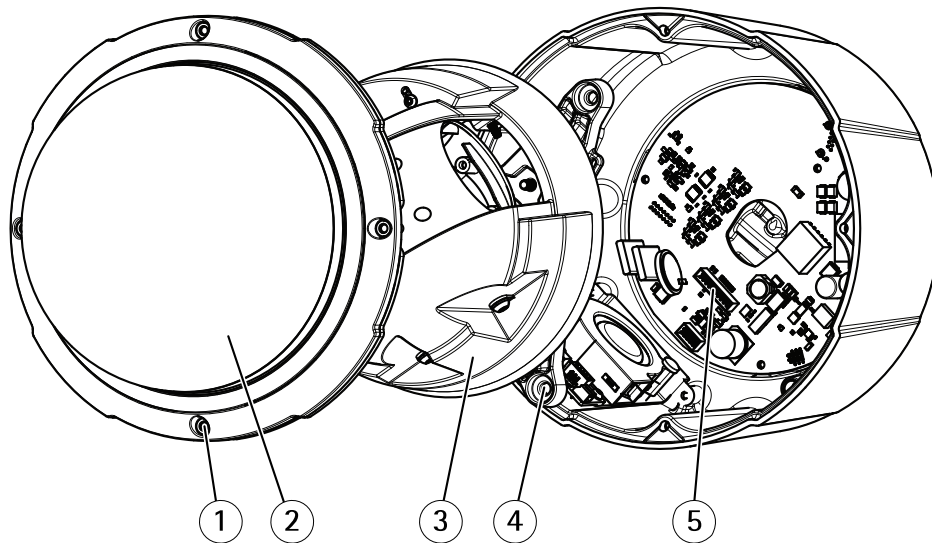


- 1 *Wave spring*
- 2 *Washer*
- 3 *Bayonet screw*
- 4 *Spring*
- 5 *Safety hook*
- 6 *Screw*
- 7 *Cable gasket*
- 8 *Cable holder*
- 9 *Screw*
- 10 *Gasket*
- 11 *Lid assembly*
- 12 *Anti loss screw*

1. Push the cable gasket into the slot.
2. Put back the cable holders and the screw.
3. Put back the gasket and the lid assembly. Tighten the anti loss screws with 0.4 Nm (0.3 lb ft) torque.
4. Put back the spring, the safety hook, and the screw.
5. Screw in the two bayonet screws with washers and wave springs. Tighten the screws with 1.8 Nm (1.3 lb ft) torque.

AXIS Q60 PTZ Network Camera Series

Repaint the product



- 1 *Anti loss screw*
- 2 *Dome assembly*
- 3 *Camera assembly*
- 4 *Screw*
- 5 *Power connector*

6. Connect the camera assembly to the power circuit board.
7. Put back the camera assembly and the three screws. Tighten the screws with 4 Nm (3 lb ft) torque.
8. Put back the dome assembly. Tighten the anti loss screws with 4 Nm (3 lb ft) torque.

