

HOW TO.

Use the AXIS Q2901-E with AXIS Camera Station

Contents

Introduction	3
Use the spot measurement tool within AXIS Camera Station	3
How to display the spot temperature as a text overlay	5
Alarms triggered by temperature	6
Considerations and limitations	10

Introduction

The following document highlights how to use AXIS Q2901-E with AXIS Camera Station in different scenarios:

The document explains how to:

- Use the spot measurement tool within AXIS Camera Station
- How to display the spot temperature as a text overlay
- Create alarms triggered by temperature

Prerequisites

AXIS Camera Station 5.20.007

AXIS Q2901 firmware 6.50.1.3

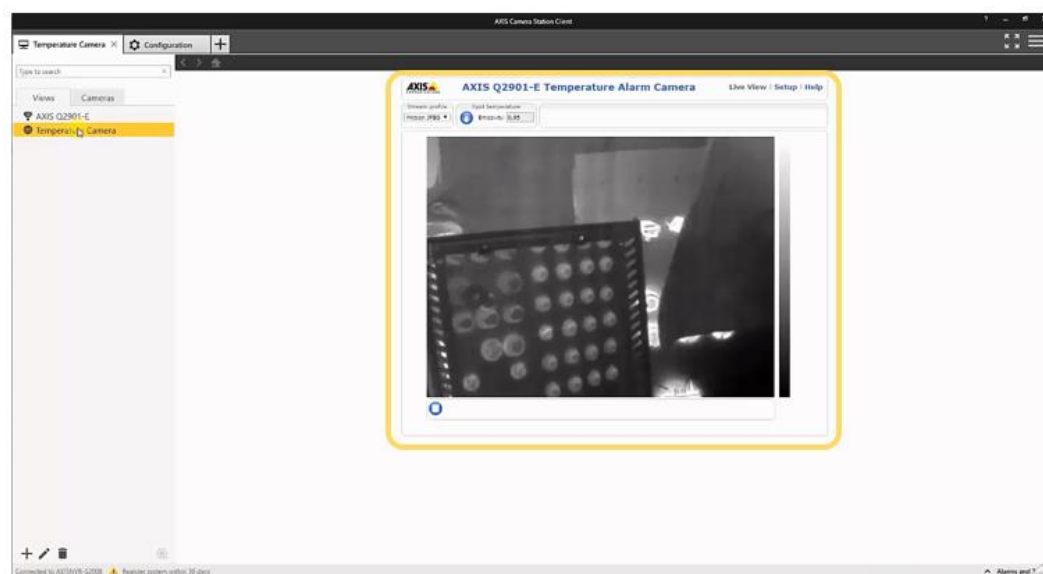
Please note that Axis doesn't take any responsibility for how this configuration may affect your system. If the modification fails or if you get other unexpected results, you may have to restore the settings to default.

Use the spot measurement tool within AXIS Camera Station

In the following example we will add the web page of the AXIS Q2901-E into AXIS Camera Station to enable the operator to use the spot measurement tool.

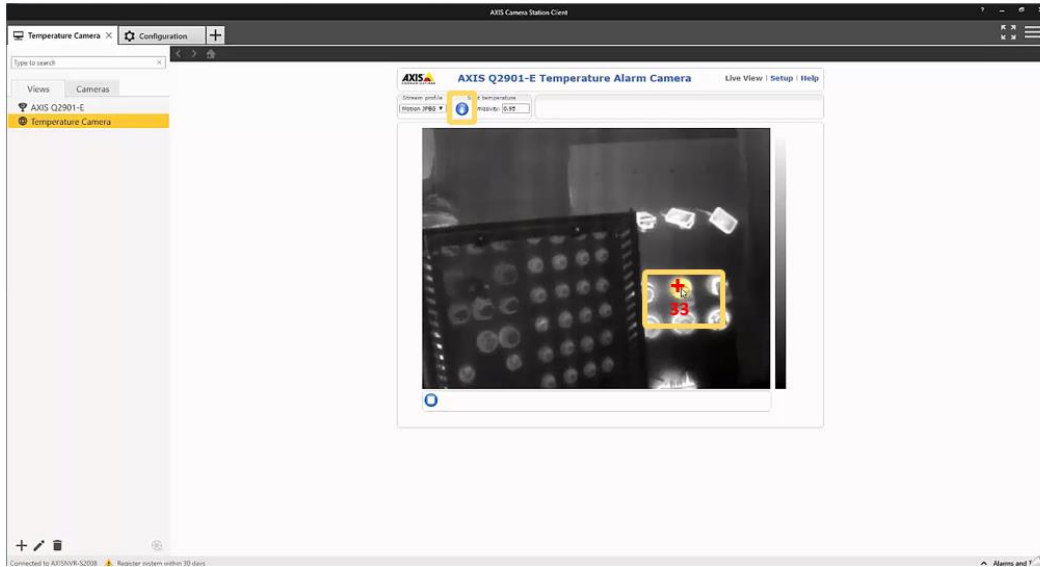


1. Select New View(+ icon) at the bottom right of the page.
2. Select New Web Page and insert the URL of the Live View of the AXIS Q2901-E.



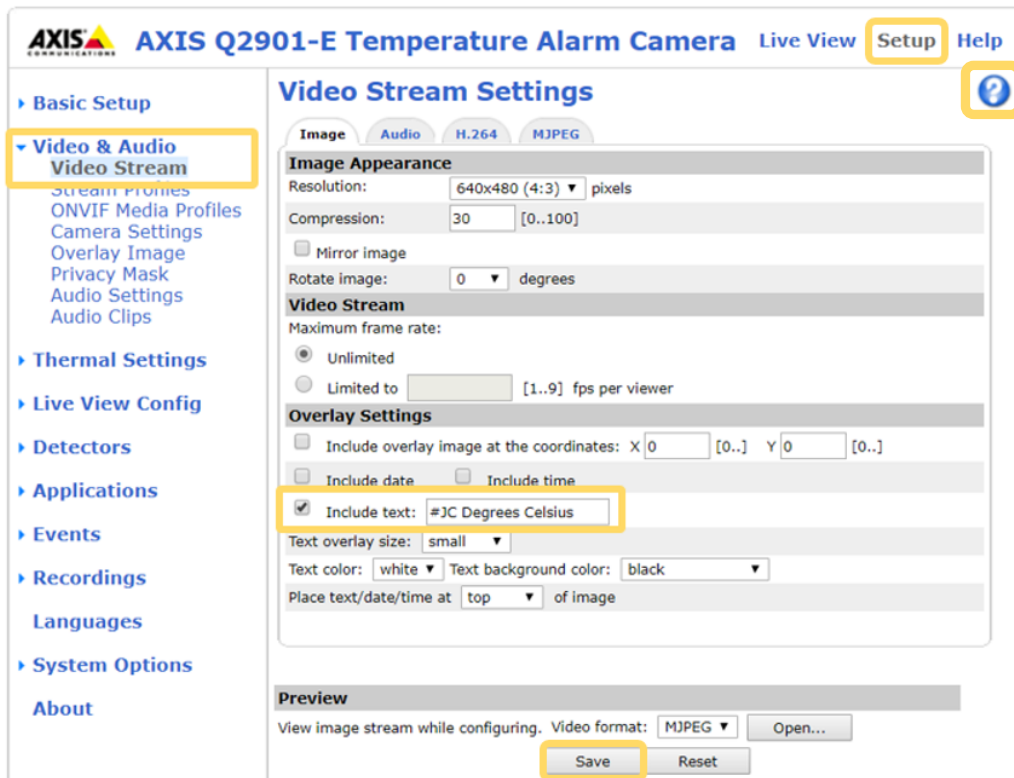
3. You can then view the Live View of the camera within AXIS Camera Station.

4. Select the spot measurement tool and then you can click within the image to view the temperature.



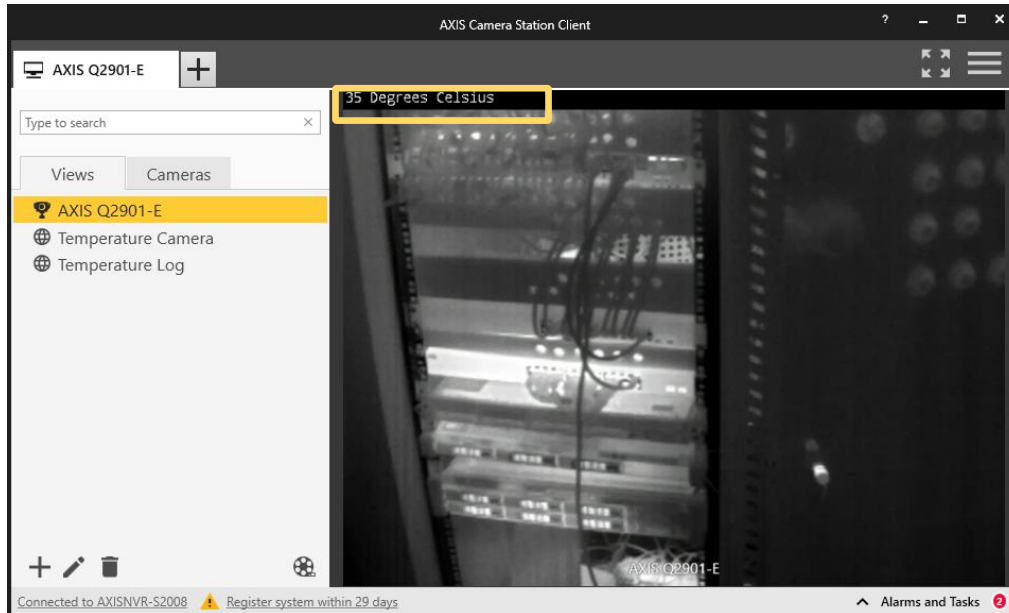
How to display the spot temperature as a text overlay

You can configure the spot temperature to be displayed as a text overlay.



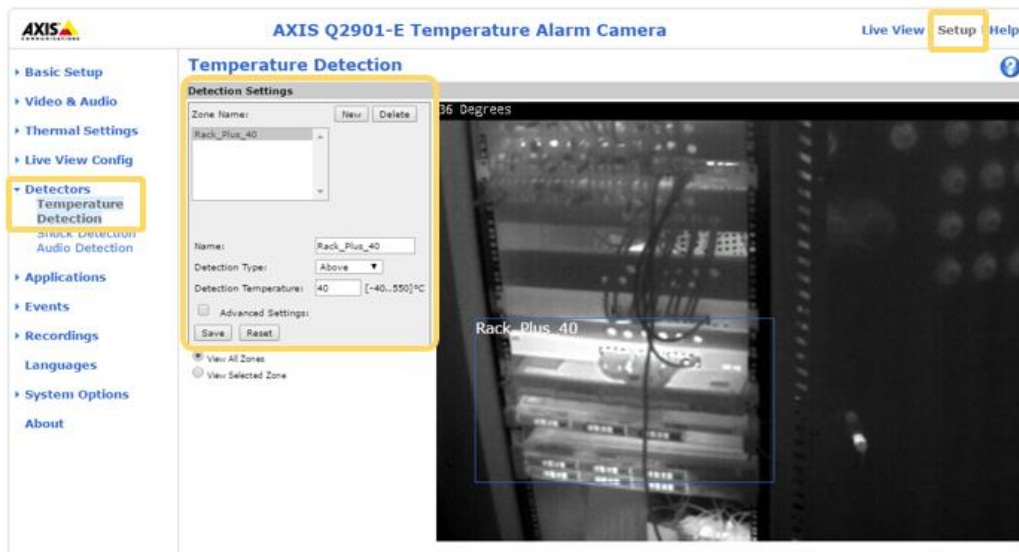
1. Enter the web interface of the AXIS Q2901-E, select Setup and then select Video Stream from the Video & Audio menu.
2. Tick the include text box and insert **#JC Degrees Celsius** and press Save. Note that other overlay options are available, click on the help icon to find out more.

- Now the temperature of the spot measurement will be displayed in the top of the video image.



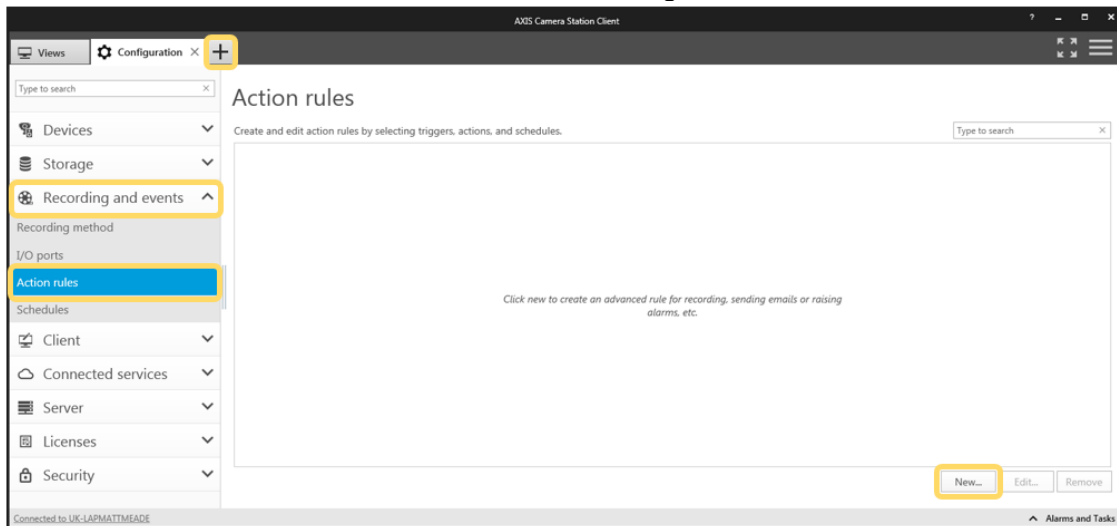
Alarms triggered by temperature

You can configure an alarm to be triggered when a zone rises above or falls below a certain temperature.

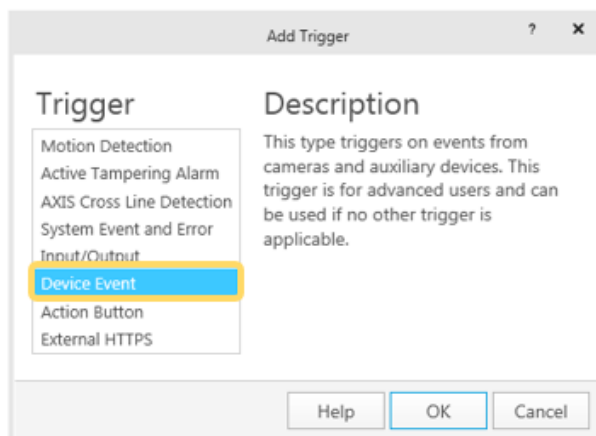


- Enter the web interface of the camera, select set up and then Temperature Detection within the Detectors menu.
- Give the alarm a descriptive name and select the detection type – above or below a specific temperature or an increase in temperature.
- Specify the detection temperature.
- Position the detection box to the desired position and press Save.

- The next step is to create an Action rule in AXIS Camera Station. Open the Configuration tab and select action rules from the Recording and events menu. Select New....

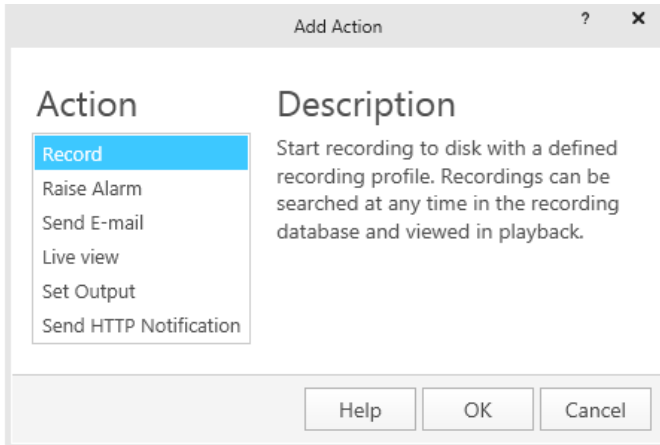


- Select Add a trigger and select Device Event.

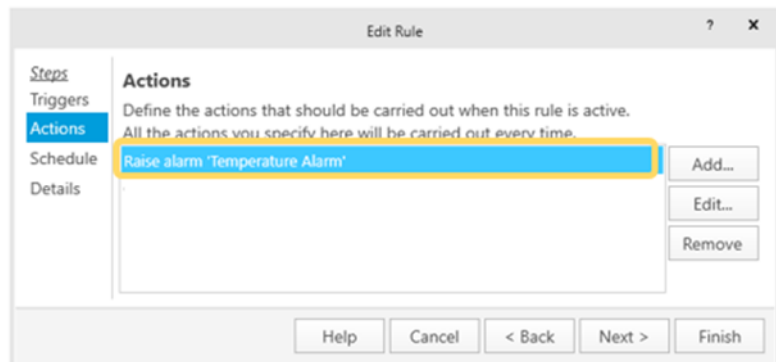
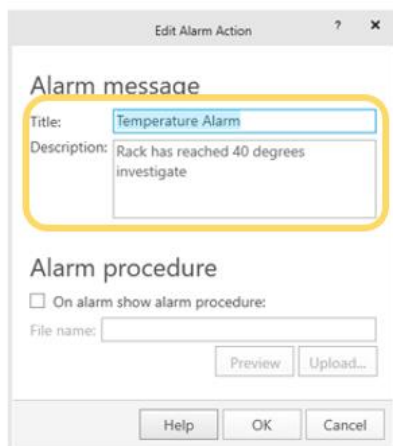


- Select the AXIS Q2901-E as the device.
- Select Temperature Detection as the Event.
- Select the Temperature Zone that was configured in the AXIS Q2901-E web interface.
- Select Yes to activate the alarm. Once activated you can see activations in the activity window.
- Click OK.

12. The next step is to define the Actions, this is what happens when an alarm has been activated. Several options are available such as recording the event with pre-event recording to observe what occurred before the activation, sending an email, triggering a contact closure output to turn on a warning lamp or similar and Http triggers which can be used to activate audio messages on an Axis speaker such as the AXIS C3003-E. The example below will create an alarm alert message which is sent to the operator and the view will automatically change to the temperature alarm camera when the alarm temperature is reached.

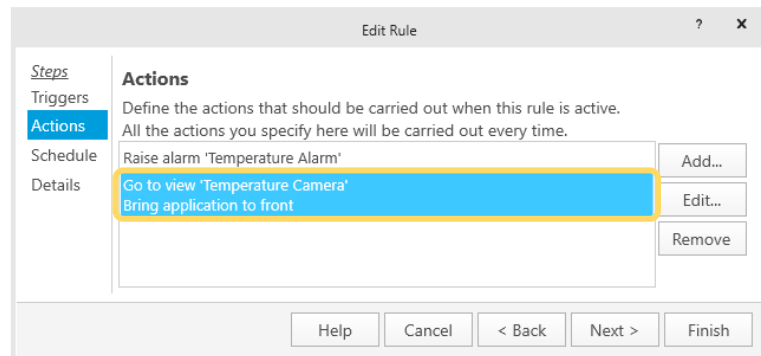
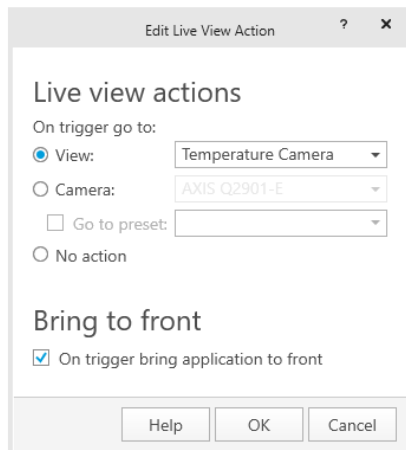


- 13.
14. To create an alarm event, Select Raise Alarm. Enter a message that will be shown to the AXIS Camera Station operator to inform them of the temperature alarm.

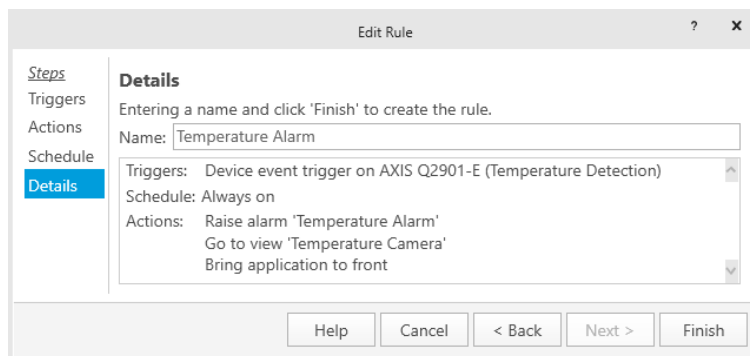


15. Click Add... to add additional Actions.

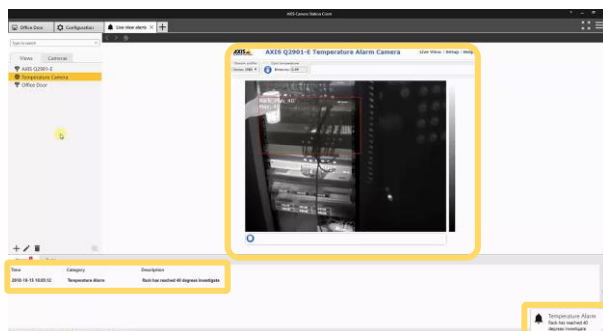
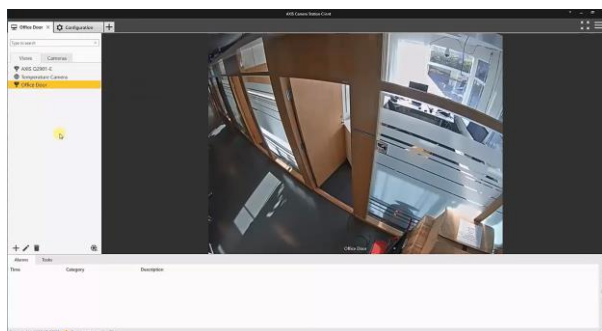
16. To automatically change the operators view select Live view. Choose the camera view to be shown when the alarm is activated.



17. Multiple action can be associated with the alarm, click Next when complete. The next option is to add a schedule, configure this if it is required.
18. The final step is to name the Action Rule. This is important especially if multiple rules are used.



19. You can then test your configuration. In this case the view has changed and alarm message is presented to the operator.



Considerations and limitations

If you use the “Go to view” function then the views of all of the connected clients will change.

For more information:

<https://www.axis.com/products/axis-q2901-e>

<https://www.axis.com/products/axis-camera-station/overview>