

AXIS Q60–E Network Dome Camera Series

Repainting Instructions

AXIS Q60-E Network Dome Camera Series

Impact on warranty

Impact on warranty

This product is approved for repaint by Axis, provided that you follow the instructions in this document and at www.axis.com/warranty-implication-when-repainting

Risks with repainting

There are several risks when disassembling or assembling an Axis product. There is always a certain yield loss during assembly. Training of operators and the use of correct tools mediates some of the problems but they can never be fully avoided. Some of the risks include:

ESD Damage – Always handle the product in an ESD safe environment. Even if precautions are taken there is always a risk of ESD damage. The damage can remain undetected and cause problems during the lifetime of the equipment.

Dust contamination – Opening a camera may expose the lens and sensor to dust or paint. Dust will affect the optical performance. Lenses need to be disassembled in a dust-free environment, preferably a cleanroom.

Paint overspray – Masking the different components of the equipment is critical. Failure to mask sensitive areas can cause problems with assembling the equipment. Any areas that are not painted at factory or have a different surface treatment than the rest of the parts (threads, ground and electrical contact surfaces) must also be masked to ensure function.

AXIS Q60–E Network Dome Camera Series

How to repaint the product

How to repaint the product

Preparations

- If applicable, disassemble the equipment according to the instructions in this document.
- Remove gaskets, screws, electrical components, connectors and plugs, windows, and domes from the parts to be repainted.
- Clean all parts to be repainted thoroughly to remove grease, dust, or oil.
- To ensure reassembly and functionality of the product, mask openings for screws, LED indicators, or microphones before painting.

Pretreatment of parts

Depending on the part material and type of paint applied at factory, different pretreatment should be done for the new paint to adhere as well as possible. Clean the parts properly to remove oil, grease and dust.

For more information on the materials used in the product, see its datasheet at www.axis.com

Powder coated parts – Using fine sandpaper, remove the original powder coating down to the base material and clean the parts before painting, or use a primer.

Anodised and chromated parts – Use a primer.

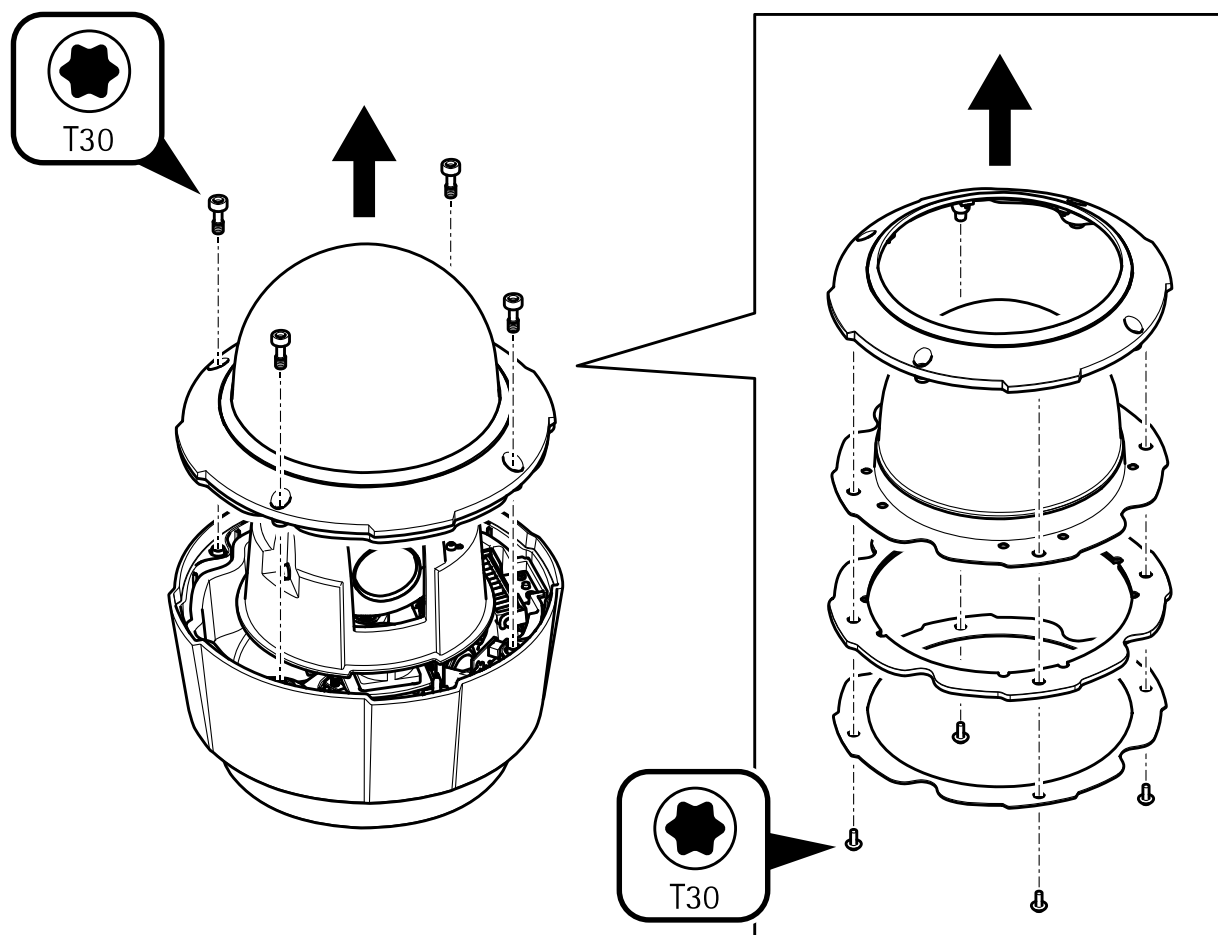
Uncoated stainless steel – No special pretreatment is needed, but make sure that the surface is clean before painting.

Plastic – Use a primer.

AXIS Q60-E Network Dome Camera Series

How to repaint the product

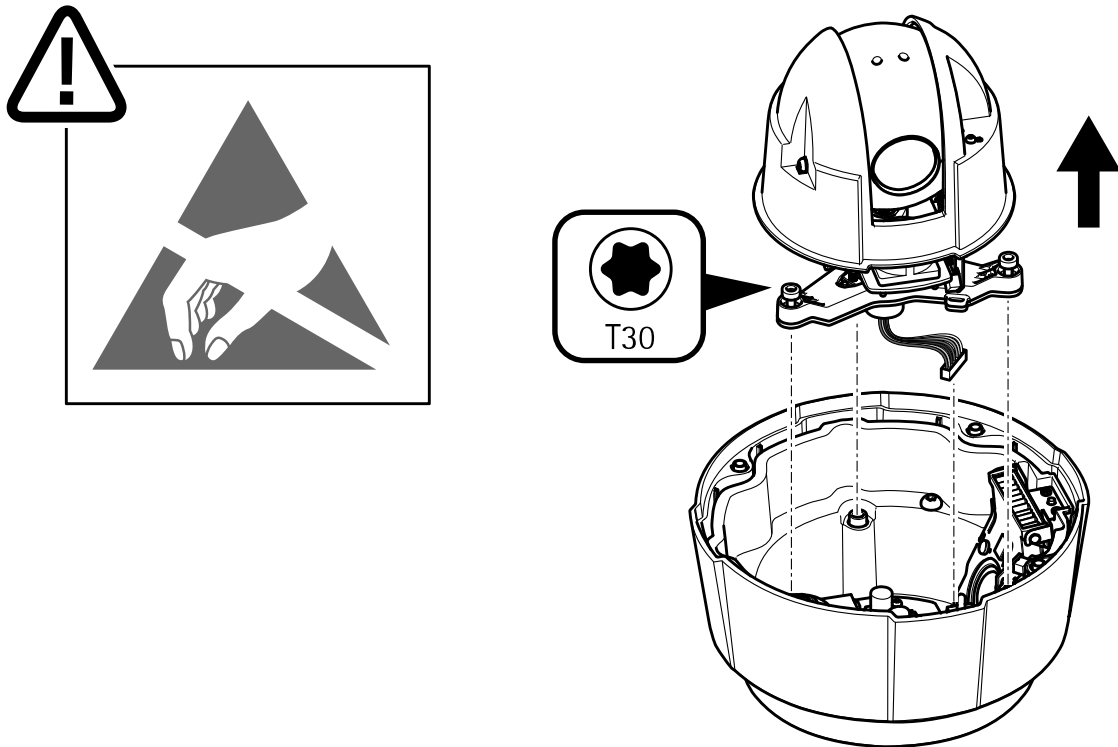
Disassembly



1. Remove the dome module assembly (4 screws).
2. Remove the four screws and separate the dome module bracket, dome with dome module sealing and dome cover ring from each other.

AXIS Q60-E Network Dome Camera Series

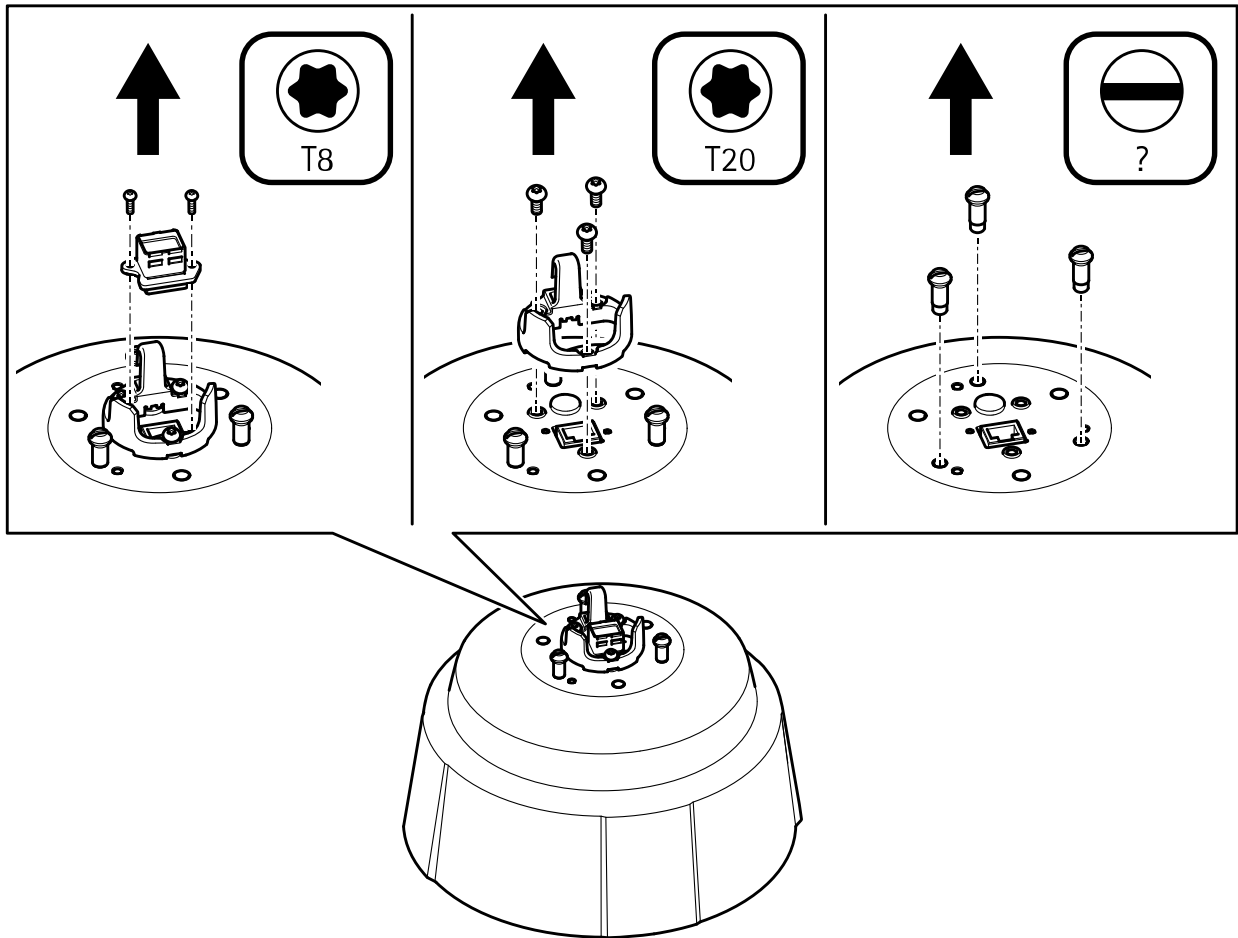
How to repaint the product



3. Loosen the unit assembly (3 screws).
4. Lift the unit assembly upwards and remove the connector from the PCB assembly power by pulling the connector upwards.

AXIS Q60-E Network Dome Camera Series

How to repaint the product

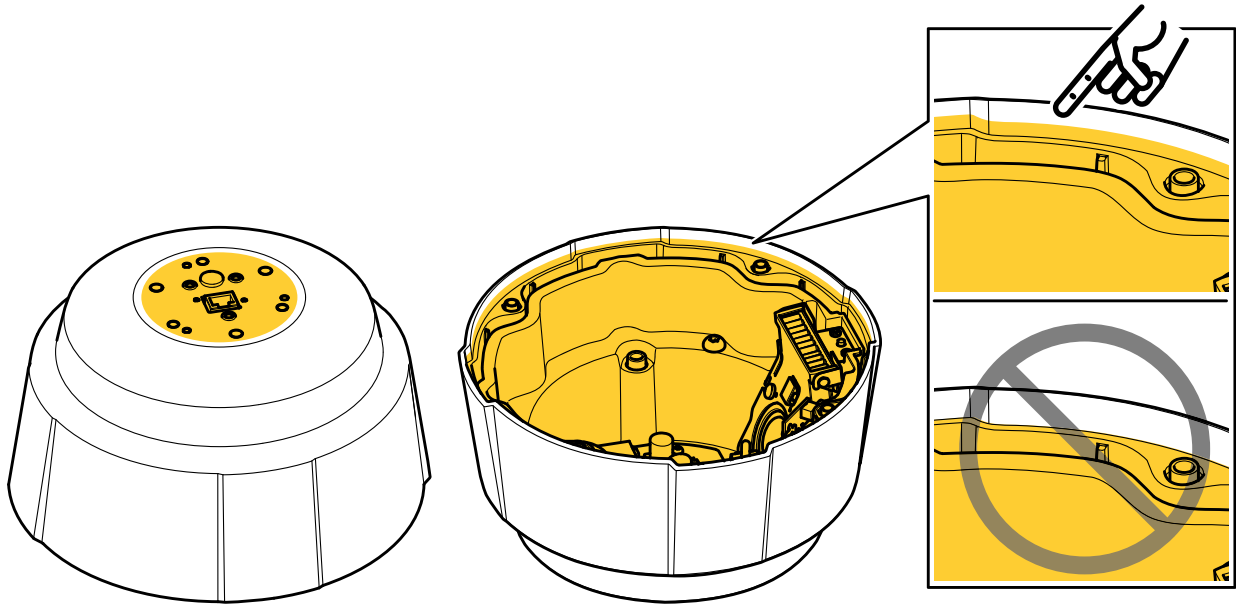


5. Remove the push-pull connector housing (2 screws).
6. Remove the chassis hook (3 screws).
7. Remove the three bayonet screws.

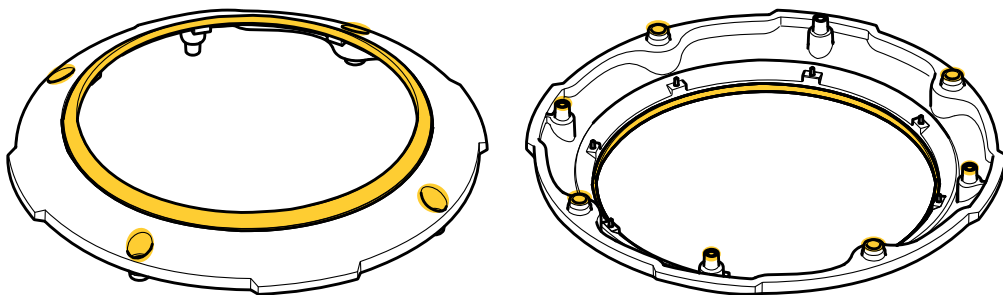
AXIS Q60-E Network Dome Camera Series

How to repaint the product

Repainting



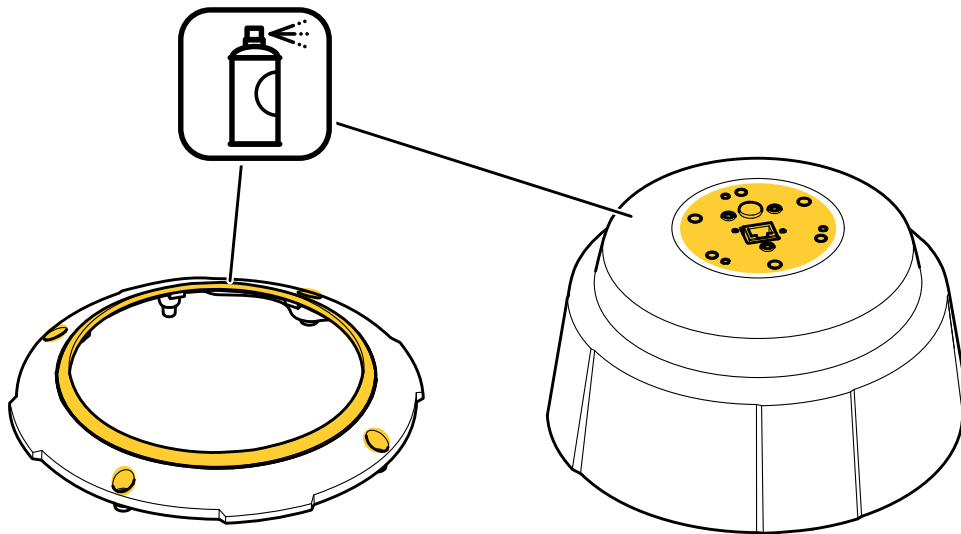
1. Mask the top surface of the chassis. Make sure all screw holes and the connector are properly masked.
2. Mask the entire opening in the bottom of the chassis. Make sure that the masking line is close to the original paint border so that no paint particles can reach the inside of the camera. Outline drawing of the opening can be found on www.axis.com.



3. Mask the plastic compass ring.
4. Mask the four threaded screw holes on the dome cover ring.
5. Make sure all necessary preparations of the chassis and the dome cover ring have been made. See *Preparations* on page 3.

AXIS Q60-E Network Dome Camera Series

How to repaint the product

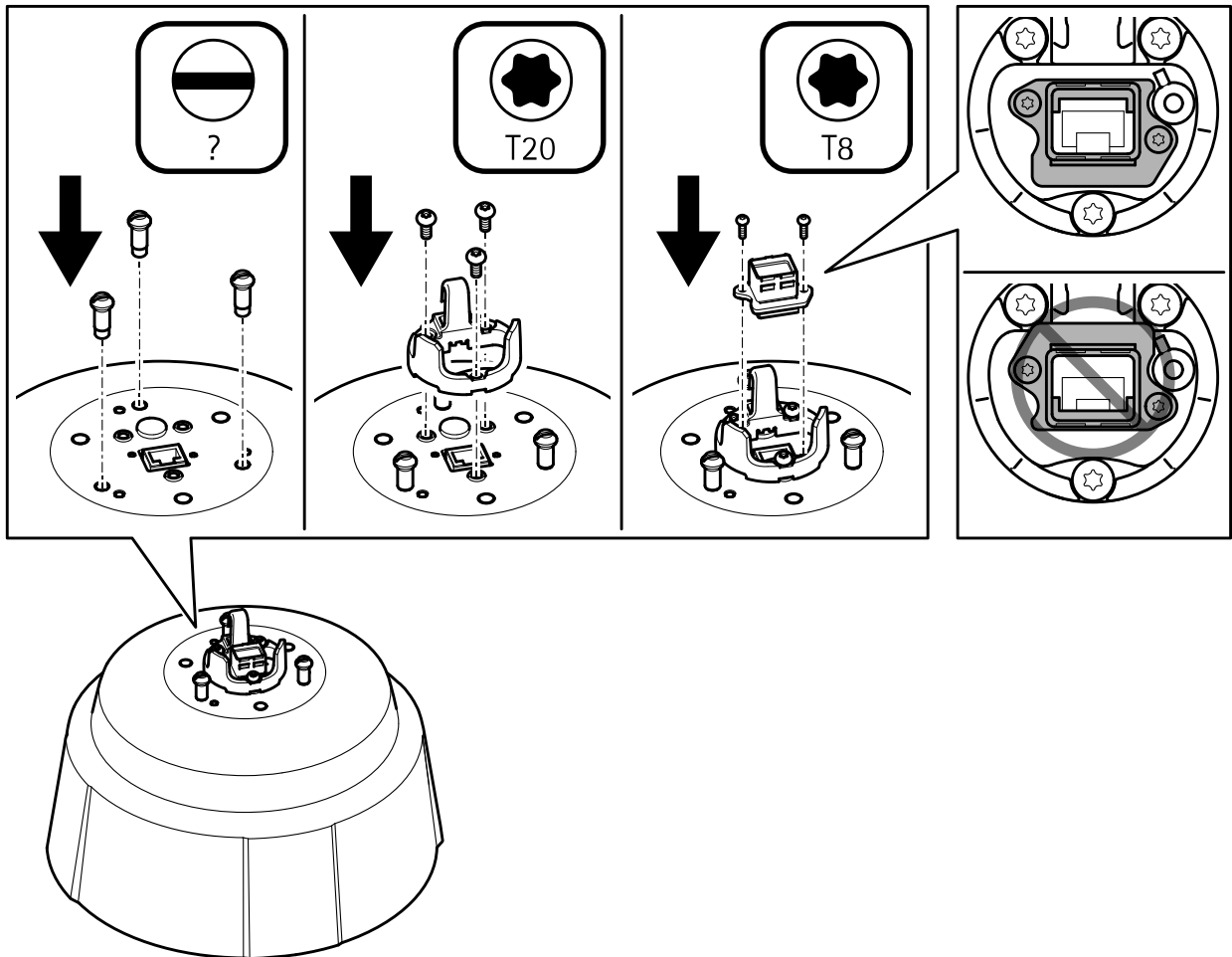


6. Apply a thin and even layer of spray paint according to the instructions of the paint manufacturer.
7. Let the paint dry.
8. To get a better coverage and clearer color, apply a second layer of spray paint.
9. When the paint is dry, remove the masking.

AXIS Q60-E Network Dome Camera Series

How to repaint the product

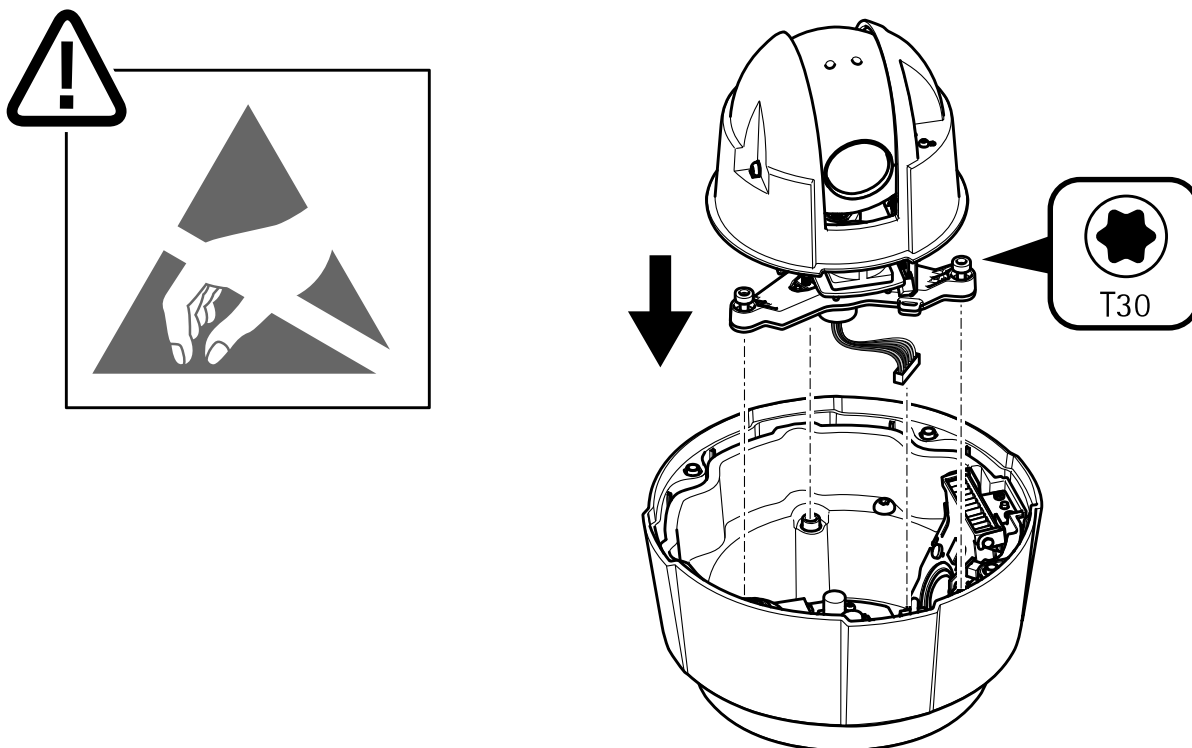
Reassembly



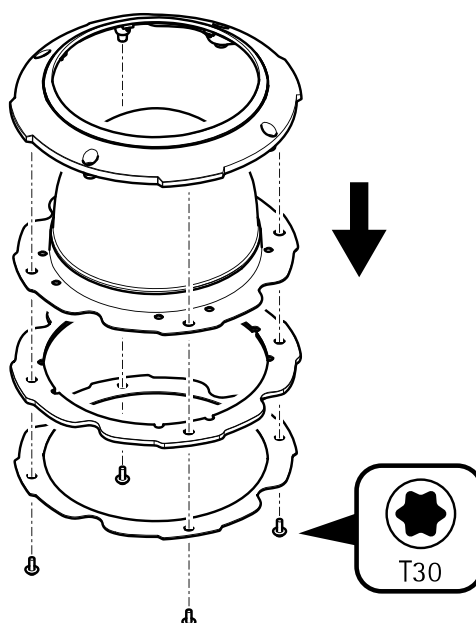
1. Attach the three bayonet screws (1.8 N m).
2. Reassemble the chassis hook (3 screws, 2.4 Nm).
3. Reassemble the push-pull connector housing (3 screws, 0.3 N m). Make sure the orientation of the push-pull connector housing is correct. The two tabs on the inside corners should be on the same side as the chassis hook.

AXIS Q60-E Network Dome Camera Series

How to repaint the product



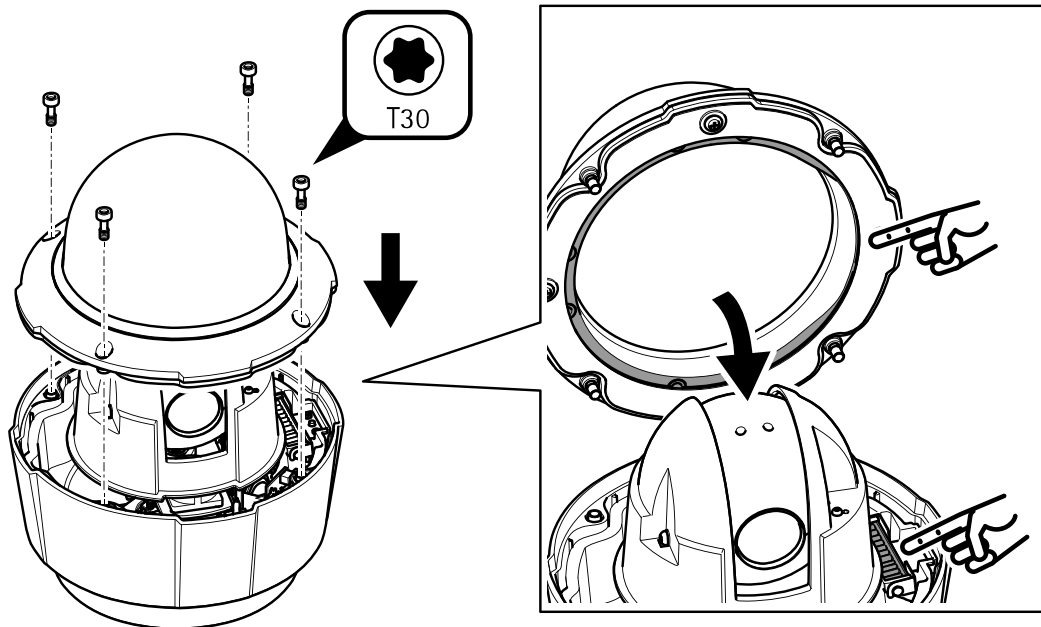
4. Attach the connector from the PCB assembly power.
5. Reassemble the unit assembly (3 screws, 4 N m).



6. Assemble the dome module bracket, dome with dome module sealing and dome cover ring (4 screws, 1.2 N m).

AXIS Q60-E Network Dome Camera Series

How to repaint the product



7. Reassemble the dome module assembly (4 screws, 4 N m). Make sure the orientation of the dome module is correct. The opening of the dome should be placed on top of the heater assembly.

