

## AXIS Q9307-LV Dome Camera

### All-in-one audio-visual monitoring device

This all-in-one device combines sharp video, audio, actionable analytics, and LED indicators. With four built-in microphones and a built-in speaker, it supports two-way communication. It comes with coughing fit and screaming voice analytics adding an extra audible dimension to active incident management. AXIS Live Privacy Shield lets you remotely monitor activities while safeguarding privacy. And the LED indicators clearly show when the camera is recording or when audio is being used. This vandal-resistant, IK08-rated camera withstands daily wipe-downs with chemical detergents. Plus, with just one device to install, it offers cost-efficient one-drop installation.

- > **5 MP video with two-way audio**
- > **Preinstalled audio and video analytics**
- > **Remote monitoring while safeguarding privacy**
- > **Withstands chemical wipe-downs**
- > **Cost-efficient all-in-one device**



# AXIS Q9307-LV Dome Camera

## Camera

### Image sensor

1/2.7" progressive scan RGB CMOS  
Pixel size 2.0 µm

### Lens

Varifocal, 3–8 mm, F1.3  
Horizontal field of view: 104°–40°  
Vertical field of view: 74°–29°  
Minimum focus distance: 1.0 m (3.3 ft)  
IR corrected, remote zoom and focus, P-Iris control

### Day and night

Automatic IR-cut filter  
Hybrid IR filter

### Minimum illumination

Color: 0.13 lux at 50 IRE, F1.3  
B/W: 0 lux at 50 IRE, F1.3

### Shutter speed

1/33500 s to 1/5 s

### Camera adjustment

Pan ±190°, tilt -10 to +80°, rotation ±190°

## System on chip (SoC)

### Model

ARTPEC-8

### Memory

2048 MB RAM, 8192 MB Flash

### Compute capabilities

Deep learning processing unit (DLPU)

## Video

### Video compression

H.264 (MPEG-4 Part 10/AVC) Baseline, Main and High Profiles  
H.265 (MPEG-H Part 2/HEVC) Main Profile  
Motion JPEG

### Resolution

16:9: 2592x1458 to 160x90  
16:10: 1280x800 to 160x100  
4:3: 2592x1944 to 160x120

### Frame rate

25/30 fps with power line frequency 50/60 Hz

### Video streaming

Up to 20 unique and configurable video streams<sup>1</sup>  
Axis Zipstream technology in H.264 and H.265  
Controllable frame rate and bandwidth  
VBR/ABR/MBR H.264/H.265  
Low latency mode  
Video streaming indicator

### Signal-to-noise ratio

>55 dB

### WDR

Forensic WDR: Up to 120 dB depending on scene

### Noise reduction

Spatial filter (2D noise reduction)  
Temporal filter (3D noise reduction)

### Multi-view streaming

Up to 2 individually cropped out view areas in full frame rate

### Image settings

Saturation, contrast, brightness, sharpness, white balance, day/night threshold, local contrast, tone mapping, exposure mode, exposure zones, defogging, barrel distortion correction, compression, rotation: 0°, 90°, 180°, 270° including corridor format, mirroring, text and image overlay, dynamic text and image overlay, polygon and mosaic privacy mask, target aperture, sensor roll

### Image processing

Forensic WDR, Lightfinder 2.0, OptimizedIR

### Pan/Tilt/Zoom

Digital PTZ, preset positions

1. We recommend a maximum of 3 unique video streams per camera or channel, for optimized user experience, network bandwidth, and storage utilization. A unique video stream can be served to many video clients in the network using multicast or unicast transport method via built-in stream reuse functionality.

## Audio

### Audio features

Spectrum visualizer<sup>2</sup>

Voice enhancer

Echo cancellation

A set of audio clips and chimes is pre-installed on the device

### Audio streaming

Configurable duplex:

One-way (simplex, half duplex)

Two-way (half duplex, full duplex)

### Audio input

10-band graphic equalizer

Built-in microphone x4

### Audio output

Built-in 2.3 inches broadband dynamic cone speaker  
87 dB SPL at 1 m/40 in (average for 250, 500, 1000, 2000, 4000 Hz)

### Audio encoding

AAC-LC 8/16/48 kHz, G.711 PCM 8 kHz, G.726 ADPCM

8 kHz, Opus 8/16/48 kHz, LPCM, 48 kHz

Configurable bitrate

## Network

### Network protocols

IPv4, IPv6 USGv6, ICMPv4/ICMPv6, HTTP, HTTPS<sup>3</sup>, HTTP/2, TLS<sup>3</sup>, QoS Layer 3 DiffServ, FTP, SFTP, CIFS/SMB, SMTP, mDNS (Bonjour), UPnP®, SNMP v1/v2c/v3 (MIB-II), DNS/DNSv6, DDNS, NTP, NTS, RTSP, RTP, SRTP/RTSPS, TCP, UDP, IGMPv1/v2/v3, RTCP, ICMP, DHCPv4/v6, ARP, SSH, LLDP, CDP, MQTT v3.1.1, Secure syslog (RFC 3164/5424, UDP/TCP/TLS), Link-Local address (ZeroConf), IEEE 802.1X (EAP-TLS), IEEE 802.1AR

## System integration

### Application Programming Interface

Open API for software integration, including VAPIX®, metadata and AXIS Camera Application Platform (ACAP); specifications at [axis.com/developer-community](https://axis.com/developer-community).

One-click cloud connection

ONVIF® Profile G, ONVIF® Profile M, ONVIF® Profile S, and ONVIF® Profile T, specifications at [onvif.org](https://onvif.org)

Support for Session Initiation Protocol (SIP) for integration with Voice over IP (VoIP) systems, peer to peer or integrated with SIP/PBX.

### Video management systems

Compatible with AXIS Camera Station Edge, AXIS Camera Station Pro, AXIS Camera Station 5, and video management software from Axis' partners available at [axis.com/vms](https://axis.com/vms).

### Onscreen controls

Day-night shift

Defog

WDR

Video streaming indicator

IR LED

Privacy masks

Media clip

Siren and light

### Event conditions

A set of conditions is pre-configured for this device

Audio: audio detection, audio clip playing

Call: state, state change

Device status: above/below/within operating temperature, casing open, IP address blocked, IP address removed, live stream active, network lost, new IP address, system ready

Edge storage: recording ongoing, storage disruption, storage health issues detected

I/O: digital input is active, digital output is active, manual trigger, virtual input is active

MQTT: stateless

Scheduled and recurring: schedule

Video: average bitrate degradation, day-night mode, tampering

2. Feature available with ACAP

3. This product includes software developed by the OpenSSL Project for use in the OpenSSL Toolkit. ([openssl.org](https://openssl.org)), and cryptographic software written by Eric Young ([ey@cryptsoft.com](mailto:ey@cryptsoft.com)).

## Event actions

A set of actions is pre-configured for this device

Audio: Play clip while rule is active

Audio clips: play, stop

Calls: answer call, end calls, make call

Day-night mode

Guard tour

Defog: set, set while the rule is active

I/O: toggle I/O once, toggle I/O while the rule is active

Illumination: use lights, use lights while the rule is active

Images: Send through FTP, SFTP, HTTP, HTTPS, network share and email

Light and siren: Run light profile, run light profile while the rule is active, stop activities

MQTT: send MQTT publish message

Notification: HTTP, HTTPS, TCP and email

Overlay text

Recordings: SD card and network share

SNMP trap messages: send, send while the rule is active

Status LED

Video clips: Send through FTP, SFTP, HTTP, HTTPS, network share and email

WDR mode

## Built-in installation aids

Remote zoom and focus

## Analytics

### Applications

Included

AXIS Object Analytics, AXIS Audio Analytics, AXIS Video Motion Detection, active tampering alarm, Coughing fit and screaming voice detection

Support for AXIS Camera Application Platform enabling installation of third-party applications, see [axis.com/acap](https://axis.com/acap)

### AXIS Object Analytics

**Object classes:** humans, vehicles (types: cars, buses, trucks, bikes, other)

**Scenarios:** line crossing, object in area, time in area, crossline counting, occupancy in area

Up to 10 scenarios

**Other features:** triggered objects visualized with trajectories, color-coded bounding boxes and tables

Polygon include/exclude areas

Perspective configuration

ONVIF Motion Alarm event

### AXIS Audio Analytics

**Features:** adaptive audio detection, audio classification

**Audio classes:** scream, shout, glass break, speech

**Event metadata:** audio detections, classifications

## AXIS Scene Metadata

**Object classes:** humans, faces, vehicles (types: cars, buses, trucks, bikes), license plates

**Object attributes:** vehicle color, upper/lower clothing color, confidence, position

## Approvals

### Product markings

CSA, UL/cUL, CE, KC, VCCI, RCM

### Supply chain

TAA compliant

### EMC

EN 55035, EN 55032 Class A, EN 50121-4, EN 61000-3-2, EN 61000-3-3, EN 61000-6-1, EN 61000-6-2

**Australia/New Zealand:** RCM AS/NZS CISPR 32 Class A

**Canada:** ICES-3(A)/NMB-3(A)

**Japan:** VCCI Class A

**Korea:** KC KN35, KC KN32 Class A

**USA:** FCC Part 15 Subpart B Class A

### Safety

CAN/CSA C22.2 No. 62368-1 ed. 3, IEC/EN/UL 62368-1 ed. 3, IEC/EN 62471 risk group exempt, IS 13252

### Environment

IEC 60068-2-1, IEC 60068-2-2, IEC 60068-2-6, IEC 60068-2-14, IEC 60068-2-27, IEC 60068-2-78, IEC/EN 60529 IP44, IEC/EN 62262 IK08

### Network

NIST SP500-267

### Cybersecurity

ETSI EN 303 645, BSI IT Security Label

## Cybersecurity

### Edge security

**Software:** Signed OS, brute force delay protection, digest authentication and OAuth 2.0 RFC6749 Client Credential Flow/OpenID Authorization Code Flow for centralized ADFS account management, password protection, Axis Cryptographic Module (FIPS 140-2 level 1)

**Hardware:** Axis Edge Vault cybersecurity platform Secure element (CC EAL 6+), system-on-chip security (TEE), Axis device ID, secure keystore, signed video, secure boot, encrypted filesystem (AES-XTS-Plain64 256bit)

## Network security

IEEE 802.1X (EAP-TLS, PEAP-MSCHAPv2)<sup>4</sup>,  
IEEE 802.1AE (MACsec PSK/EAP-TLS), IEEE 802.1AR,  
HTTPS/HSTS<sup>4</sup>, TLS v1.2/v1.3<sup>4</sup>, Network Time Security  
(NTS), X.509 Certificate PKI, host-based firewall

---

## Documentation

*AXIS OS Hardening Guide*

*Axis Vulnerability Management Policy*

*Axis Security Development Model*

AXIS OS Software Bill of Material (SBOM)

To download documents, go to [axis.com/support/cybersecurity/resources](https://axis.com/support/cybersecurity/resources)

To read more about Axis cybersecurity support, go to [axis.com/cybersecurity](https://axis.com/cybersecurity)

---

## General

### Casing

IP44- and IK08-rated

Polycarbonate hard-coated dome

Aluminum and plastic casing

Color: white NCS S 1002-B

Withstands chemical wipe-downs. Read more in the user manual.

---

### LED indicators

LED indicator

Audio LED

---

### Mounting

Mounting bracket with junction box holes (double-gang, single-gang, and 4" octagon) and for wall or ceiling mount

---

### Power

Power over Ethernet (PoE) IEEE 802.3af/802.3at Type 2 Class 4

Typical 10 W, max 25.5 W

---

### Connectors

Network: RJ45 10BASE-T/100BASE-TX PoE

I/O: 4-pin 2.5 mm (0.098 in) terminal block for 1 supervised digital input and 1 digital output (12 V DC output, max. load 25 mA)

---

### IR illumination

Optimized IR with power-efficient, long-life 850 nm IR LEDs

Range of reach 40 m (130 ft) or more depending on the scene

---

## Storage

Support for microSD/microSDHC/microSDXC card

Support for SD card encryption (AES-XTS-Plain64 256bit)

Recording to network-attached storage (NAS)

For SD card and NAS recommendations see [axis.com](https://axis.com)

---

## Operating conditions

Temperature: 0 °C to 40 °C (32 °F to 104 °F)

Humidity: 10–85% RH (non-condensing)

---

## Storage conditions

Temperature: -40 °C to 65 °C (-40 °F to 149 °F)

Humidity: 5–95% RH (non-condensing)

---

## Dimensions

For the overall product dimensions, see the dimension drawing in this datasheet.

---

## Weight

1250 g (2.8 lb)

---

## Box content

Camera, installation guide, TORX® TR20 bits, terminal block connector, connector guard, cable gaskets, owner authentication key

---

## Optional accessories

AXIS T91E61 Wall Mount, AXIS T91B47 Pole Mount,

AXIS T94K01D Pendant Kit

AXIS T8415 Wireless Installation Tool

AXIS Surveillance Cards

For more accessories, go to [axis.com/products/axis-q9307-lv#accessories](https://axis.com/products/axis-q9307-lv#accessories)

---

## System tools

AXIS Site Designer, AXIS Device Manager, product selector, accessory selector, lens calculator

Available at [axis.com](https://axis.com)

---

## Languages

English, German, French, Spanish, Italian, Russian, Simplified Chinese, Japanese, Korean, Portuguese, Polish, Traditional Chinese, Dutch, Czech, Swedish, Finnish, Turkish, Thai, Vietnamese

---

## Warranty

5-year warranty, see [axis.com/warranty](https://axis.com/warranty)

---

## Part numbers

Available at [axis.com/products/axis-q9307-lv#part-numbers](https://axis.com/products/axis-q9307-lv#part-numbers)

---

4. This product includes software developed by the OpenSSL Project for use in the OpenSSL Toolkit. ([openssl.org](https://openssl.org)), and cryptographic software written by Eric Young ([ey@cryptsoft.com](mailto:ey@cryptsoft.com)).

## Sustainability

### Substance control

PVC free

RoHS in accordance with EU RoHS Directive 2011/65/EU/ and EN 63000:2018

REACH in accordance with (EC) No 1907/2006. For SCIP UUID, see [echa.europa.eu](https://echa.europa.eu)

---

### Materials

Renewable carbon-based plastic content: 31%

Screened for conflict minerals in accordance with OECD guidelines

To read more about sustainability at Axis, go to [axis.com/about-axis/sustainability](https://axis.com/about-axis/sustainability)

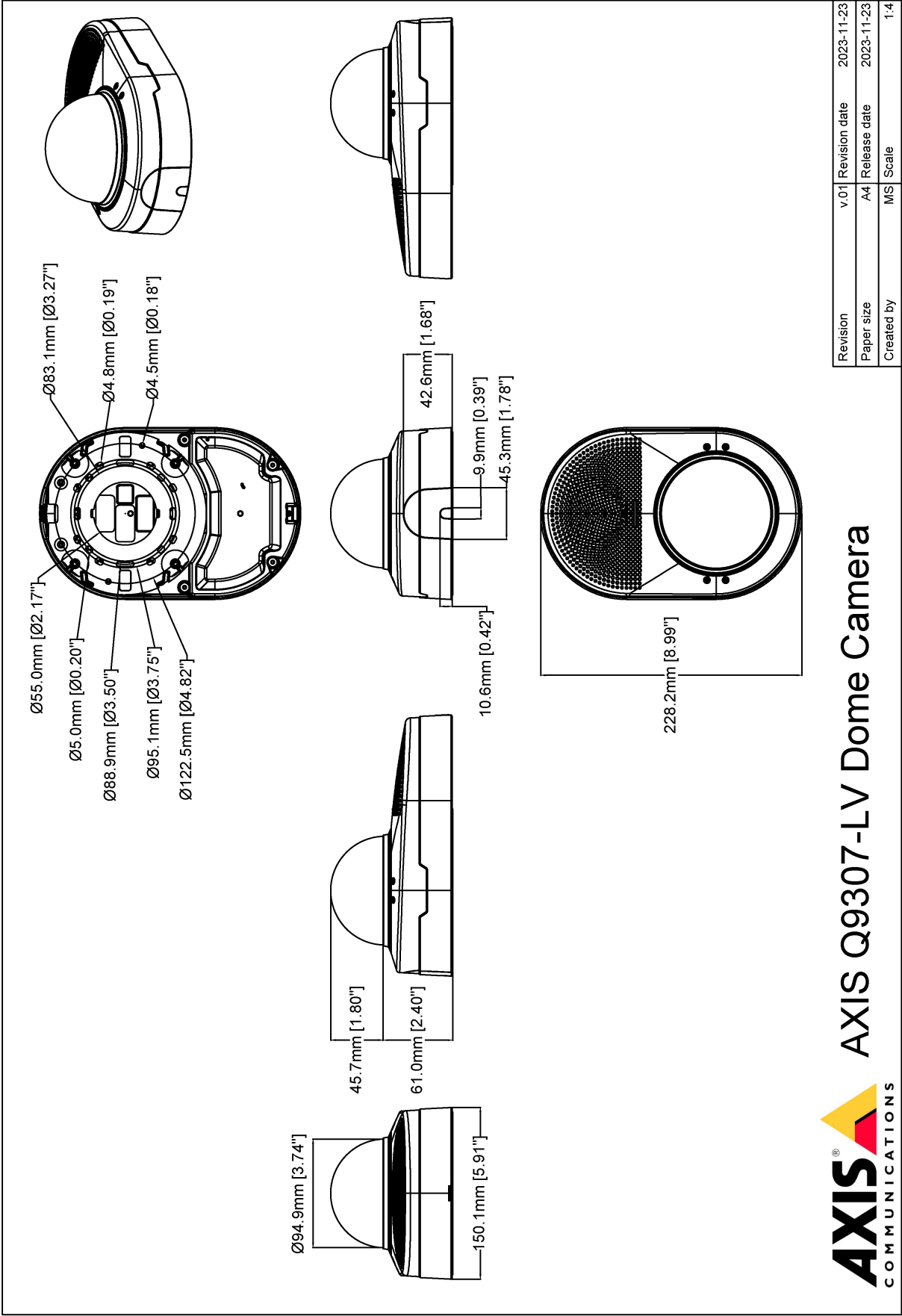
---

### Environmental responsibility

[axis.com/environmental-responsibility](https://axis.com/environmental-responsibility)

Axis Communications is a signatory of the UN Global Compact, read more at [unglobalcompact.org](https://unglobalcompact.org)

Dimension drawing





## Highlighted capabilities

### **AXIS Live Privacy Shield**

Remotely monitor activities both indoors and outdoors while safeguarding privacy in real-time.

With AI-based dynamic masking you can choose what to mask or blur while addressing rules and regulations protecting privacy and personal data. The application enables masking of moving and still objects such as humans, license plates, or backgrounds. The application works in real-time and on both live and recorded video streams.

LEDs can be used separately or together and can be switched off for more discrete monitoring.

For more information, see [axis.com/glossary](https://axis.com/glossary)

### **AXIS Object Analytics**

AXIS Object Analytics is a preinstalled, multifeatured video analytics that detects and classifies humans, vehicles, and types of vehicles. Thanks to AI-based algorithms and behavioral conditions, it analyzes the scene and their spatial behavior within – all tailored to your specific needs. Scalable and edge-based, it requires minimum effort to set up and supports various scenarios running simultaneously.

### **Chemical resistant casing**

In some environments where hygiene requirements are rigorous, cleaning the exterior of the surveillance camera could be required daily or even several times a day. The recommended cleaning procedure involves chemical wipedowns using a soft cloth with specific chemical solutions such as cleansers or disinfectants. The chemical resistance of the casing has been verified through two types of in-house testing: environmental stress crack resistance testing and cleaning simulations.

### **Coughing fit and screaming voice detection**

Coughing fit and screaming voice detection are two audio analytic applications that detect incidents by listening to the surrounding audio 24/7. The audio analytics consists of two separate detection algorithms, and you can choose to use one of them, or both. The cough detector detects single coughs or coughing fits. The screaming voice detector identifies sound patterns associated with duress, anger, or fear.

### **Echo cancellation**

Devices with echo cancellation can recognize sounds that the built-in loudspeaker produces as echoes and remove them.

### **LED indicators**

LED indicators are used to signal different functionalities to the close environment. The LEDs help to improve safety, security, and operational efficiency and at the same time safeguards privacy. A LED indicator can for instance help protect privacy by letting you know when the camera is recording or when audio is being used. The