

AXIS M3905-R and AXIS P3905-R Mk III Dome Cameras

Repainting instructions

Impact on warranty

This product is approved for repaint by Axis, provided that you follow the instructions in this document and at axis.com/warranty-implication-when-repainting.

Risks with repainting

There are several risks when disassembling or assembling an Axis product. Training of operators and the use of correct tools mediates some of the problems but they can never be fully avoided. Some of the risks include:

ESD Damage – Always handle the product in an ESD safe environment. Even if precautions are taken there is always a risk of ESD damage. The damage can remain undetected and cause problems during the lifetime of the equipment.

Dust contamination – Opening a camera may expose the lens and sensor to dust or paint. Dust will affect the optical performance. Lenses need to be disassembled in a dust-free environment, preferably a cleanroom.

Paint overspray – Masking the different components of the equipment is critical. Failure to mask sensitive areas can cause problems when assembling the equipment. Areas not painted at the factory or which have a different surface treatment than the parts to be painted (threads, ground and electrical contact surfaces) must also be masked to ensure function.

Repaint the product

Preparations

- If applicable, disassemble the device according to the instructions in this document.
- Clean all parts that will be repainted thoroughly to remove grease, dust, or oil.
- To ensure reassembly and functionality of the product, mask any openings (for example for screws, LED indicators, or microphones) before you paint.

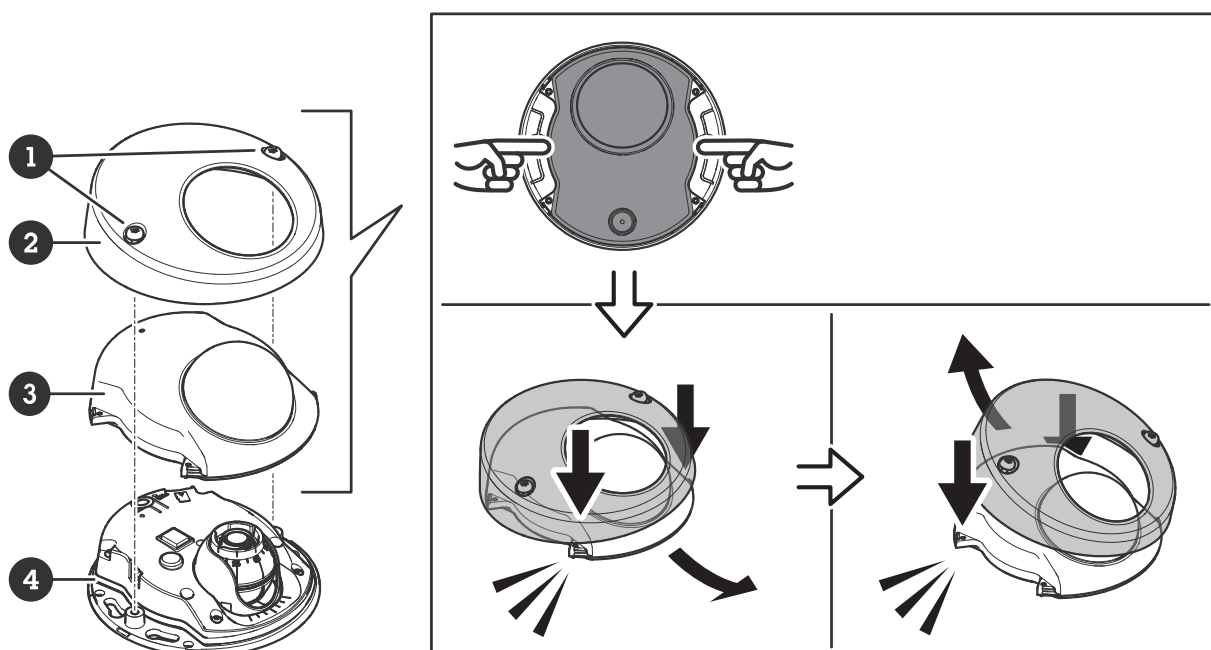
Pretreatment of parts

Before you apply a new coating, we recommend the following pretreatment:

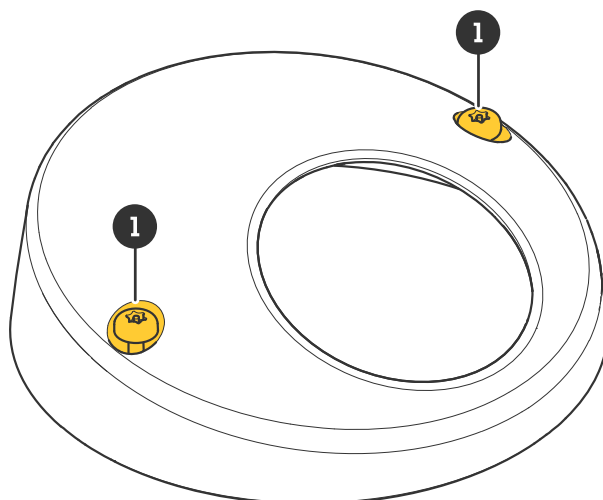
- Apply a primer layer suitable for the specific material, to increase adhesion to the parts.

The material used in the product is Panlite PC LN-3520ZH.

Disassembly



- 1 TR20 screws
- 2 Dome cover
- 3 Dome
- 4 Camera



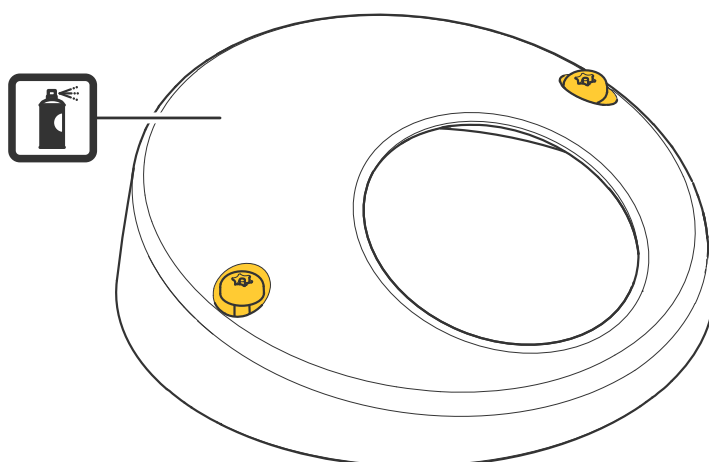
1. Loosen the screws.
2. Remove the dome cover.
3. From the inside of the dome cover, use two fingers to press the middle part of the dome.
4. Make sure the dome releases from the dome cover and remove the dome.

Repainting

1. Make sure all necessary preparations of the dome cover have been made. See *Preparations, on page 3*.

⚠ CAUTION

Make sure not to paint the two screw holes on the cover. If paint clogs the two screw holes, you can't reassemble the camera.



2. Apply a thin and even layer of spray paint according to the instructions of the paint manufacturer.
3. Let the paint dry.
4. To get a better coverage and clearer color, apply a second layer of spray paint.
5. When the paint is dry, remove the masking.

Reassembly

1. Put the dome in the dome cover.
2. Use two fingers to press the middle part of the dome and make sure it locks in place.
3. Attach the dome cover to the camera.
4. Fasten the screws with 1.2 N m (0.89 lb ft).

T10211842

2024-08 (M1.6)

© 2024 Axis Communications AB