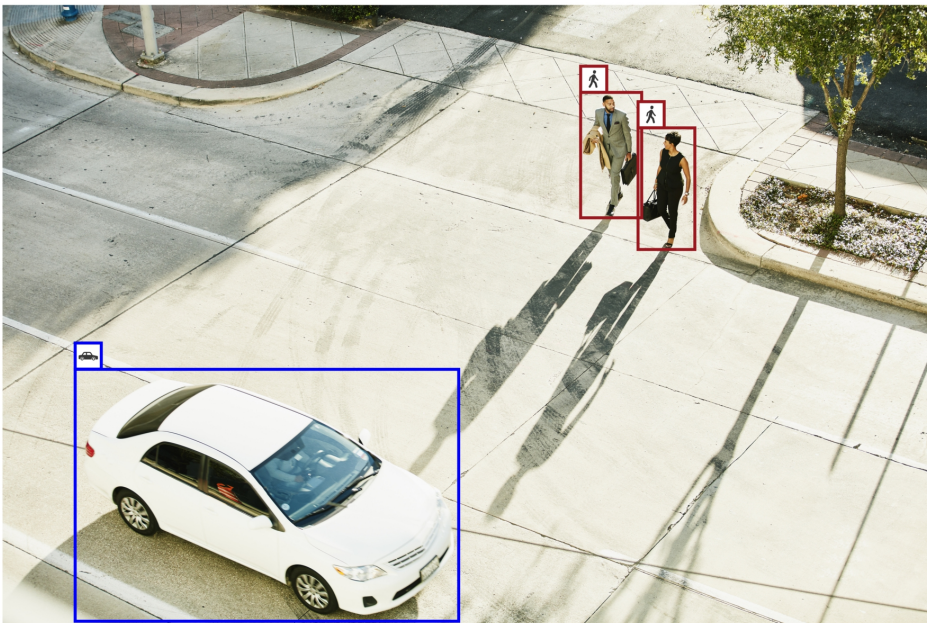


# AXIS Object Analytics

## Suite of AI-based analytics for actionable insights

Transform video into valuable and actionable insights with this suite of AI-based analytics. It can detect, classify, track, and count humans, vehicles, and types of vehicles. It delivers real-time intelligence for immediate action, enabling you to concentrate on important events as they develop. You can also visualize your data in dashboards and spreadsheets to gain insights into trends and patterns. Furthermore, using only one application, it's possible to set up and customize various detection scenarios and run them simultaneously. This helps address many use cases within both security, safety and operational efficiency.

- > Detect, classify, track, and count humans and vehicles
- > For security, safety, and operational efficiency
- > Run multiple scenarios simultaneously on the edge
- > Flexible and easy configuration
- > Preinstalled at no extra cost



# AXIS Object Analytics

## General

<b>Typical use cases</b>	Detecting objects that move within a defined area, cross a tripwire, or stay in an area for a set time. Counting objects in an area or crossing a tripwire. Suitable for both indoor and outdoor use.
<b>Supported devices</b>	Preinstalled on compatible Axis cameras with an MLPU <sup>a</sup> or DLPU <sup>b</sup> . For a complete list, see <a href="https://axis.com/products/axis-object-analytics/support#compatible-products">axis.com/products/axis-object-analytics/support#compatible-products</a>
<b>Compute platform</b>	Edge
<b>Configuration</b>	Through web browser: Chrome™, Firefox®, or Edge™
<b>Languages</b>	English

## Capabilities

<b>Features</b>	Up to 10 scenarios with individually configurable trigger conditions. Optional perspective configuration.
<b>Object classes</b>	MLPU <sup>a</sup> cameras: Humans, vehicles. DLPU <sup>b</sup> cameras: Humans, vehicles. Vehicle types: cars, buses, trucks, bikes (motorcycles/bicycles).
<b>Scenarios</b>	Object in area Time in area Line crossing Crossline counting Occupancy in area Scenarios can vary between products. <sup>c</sup>
<b>Limitations</b>	Insufficient contrast can affect detection and classification performance.

## System integration

<b>Application Programming Interface</b>	Open API for software integration, including VAPIX®, AXIS Camera Application Platform; specifications at <a href="https://axis.com">axis.com</a> ONVIF® Profile M, specification at <a href="https://onvif.org">onvif.org</a>
<b>Event management</b>	Integrates with the camera to enable event streaming to a video management system (VMS), uploading of counting data to third-party software, and event actions such as external output activation, notifications, and edge storage. ONVIF® motion alarm event (Ref: ONVIF Service Imaging Specification)
<b>Metadata overlay</b>	Highlights trigger conditions and adds trajectories and color-coded bounding boxes around detected objects. For crossline counting and occupancy in area, shows table with counts per object class and type. <sup>d</sup>

a. MLPU = machine learning processing unit

b. DLPU = deep learning processing unit

c. For more information, see [axis.com/products/axis-object-analytics/support#compatible-products](https://axis.com/products/axis-object-analytics/support#compatible-products)

d. Metadata overlays can vary between products. For more information, see the product datasheet.