

## HOW TO

# Integration guide for Genetec™ Security Center and AXIS Object Analytics

January 2022

## Table of contents

|                 |  |                  |
|-----------------|--|------------------|
| <b><u>1</u></b> | <b><u>AXIS OBJECT ANALYTICS</u></b>                                      | <b><u>3</u></b>  |
| 1.1             | Step 1 – Prepare AXIS Object Analytics                                   | 3                |
| 1.2             | Step 2 – Enable AXIS Object Analytics on the camera                      | 3                |
| 1.3             | Step 3 –Configure AXIS Object Analytics                                  | 4                |
| 1.4             | Step 4 – Enable metadata overlay   | 7                |
| <b><u>2</u></b> | <b><u>GENETEC™ CONFIG TOOL</u></b>                                       | <b><u>8</u></b>  |
| 2.1             | Step 1 – Enable AXIS Object Analytics events                             | 8                |
| 2.2             | Step 2 – Configure AXIS Object Analytics events                          | 10               |
| 2.3             | Step 3 – Configure Event to Action sequence                              | 11               |
| <b><u>3</u></b> | <b><u>GENETEC™ SECURITY CENTER</u></b>                                   | <b><u>13</u></b> |
| 3.1             | Step 1 – Receive AXIS Object Analytics events                            | 14               |
| 3.2             | Step 2 – Receive AXIS Object Analytics events within the Monitoring View | 14               |
| 3.3             | Step 3 – Acknowledge AXIS Object Analytics events                        | 18               |

## Introduction

This document explains how to integrate AXIS Object Analytics events into Genetec™ Security Center.

Axis takes no responsibility for how this configuration may affect your system. If the modification fails or if you get other unexpected results, you may have to restore the settings to default.

## 1 AXIS Object Analytics

### 1.1 Step 1 – Prepare AXIS Object Analytics

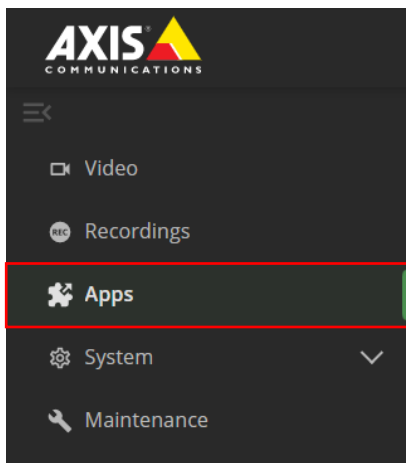
1. Make sure that the camera's firmware version is 10.2 or higher.
2. It is recommended to ensure that AXIS Object Analytics has been configured and running on the camera, before building out the rules in Genetec.

AXIS OS version 10.6.7

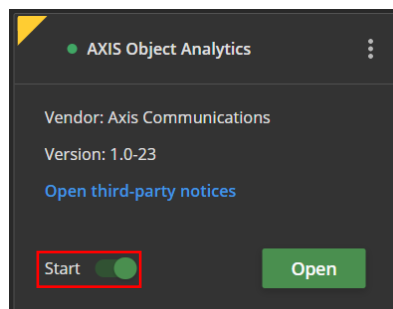
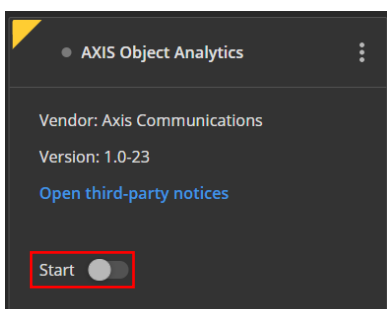
Web version 4.2.9.4

### 1.2 Step 2 – Enable AXIS Object Analytics on the camera

1. In a web browser, go to the camera's user interface.
2. Click Apps.

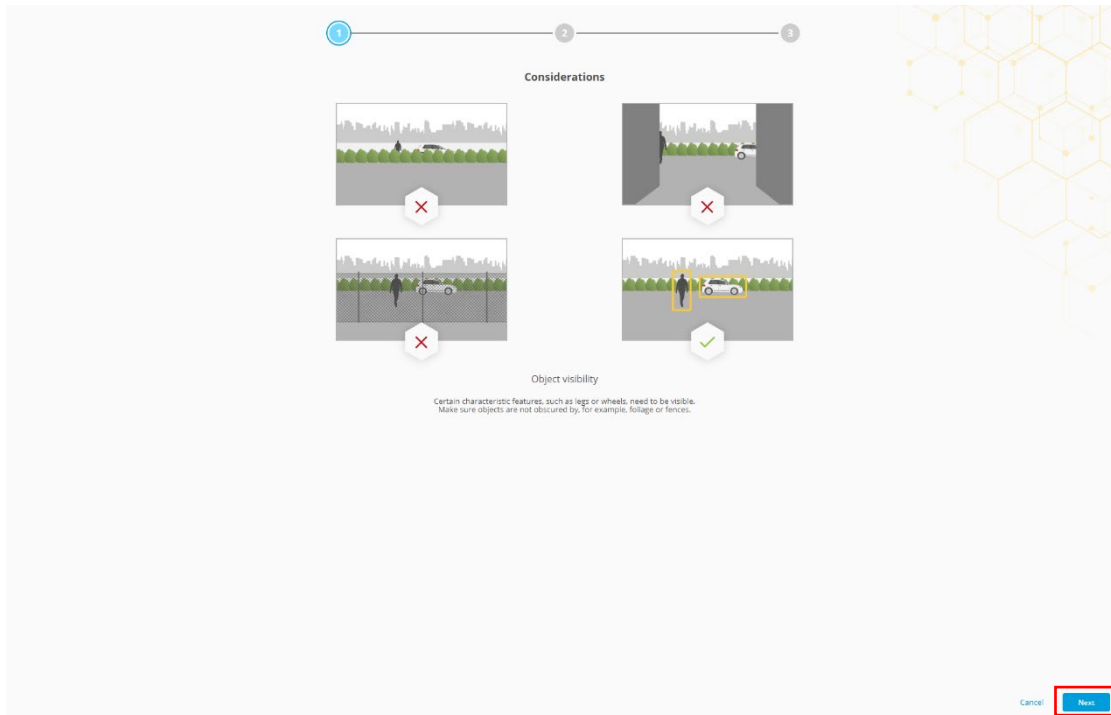


3. Start and open AXIS Object Analytics on the camera.

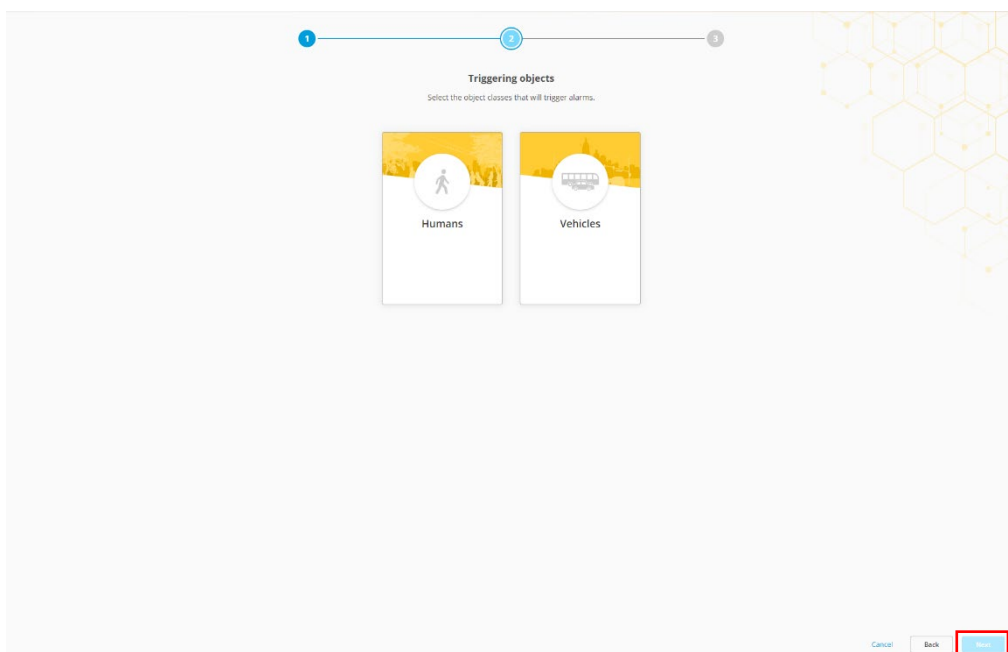


## 1.3 Step 3 –Configure AXIS Object Analytics

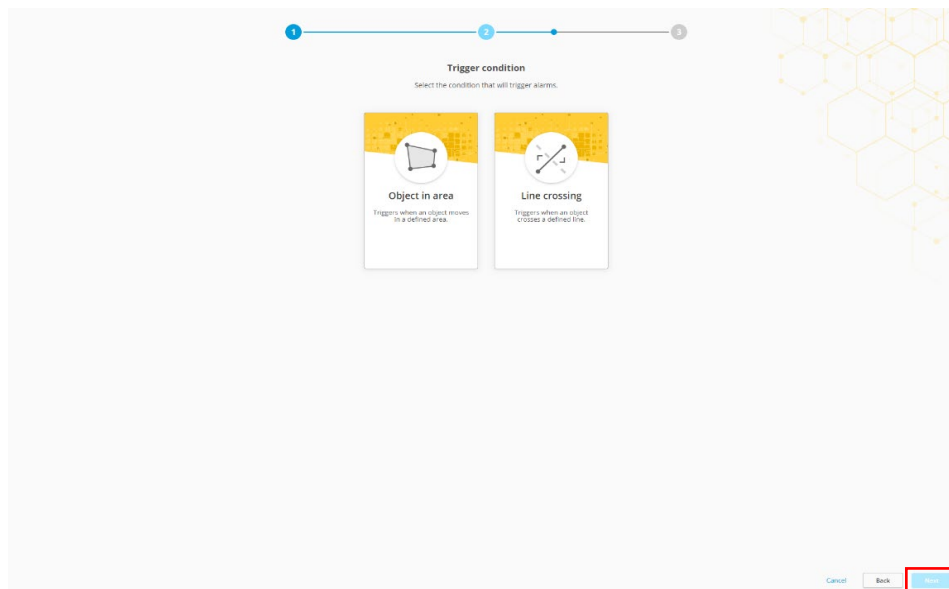
1. Follow the step-by-step guide in the application's user interface.



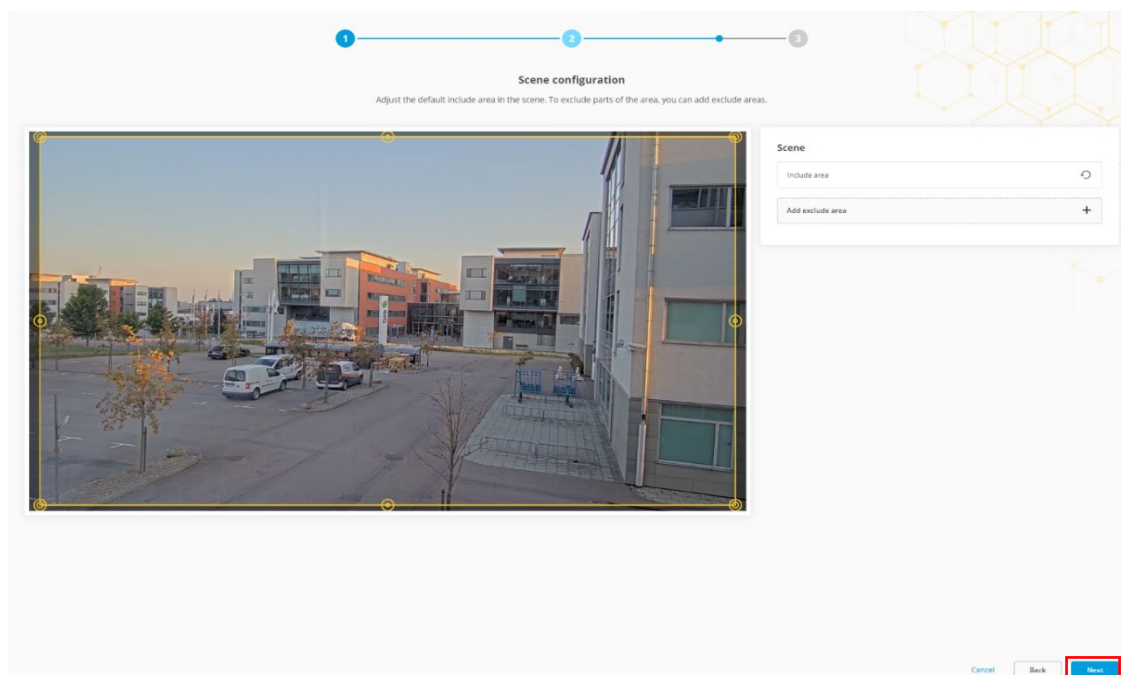
2. Select triggering objects.



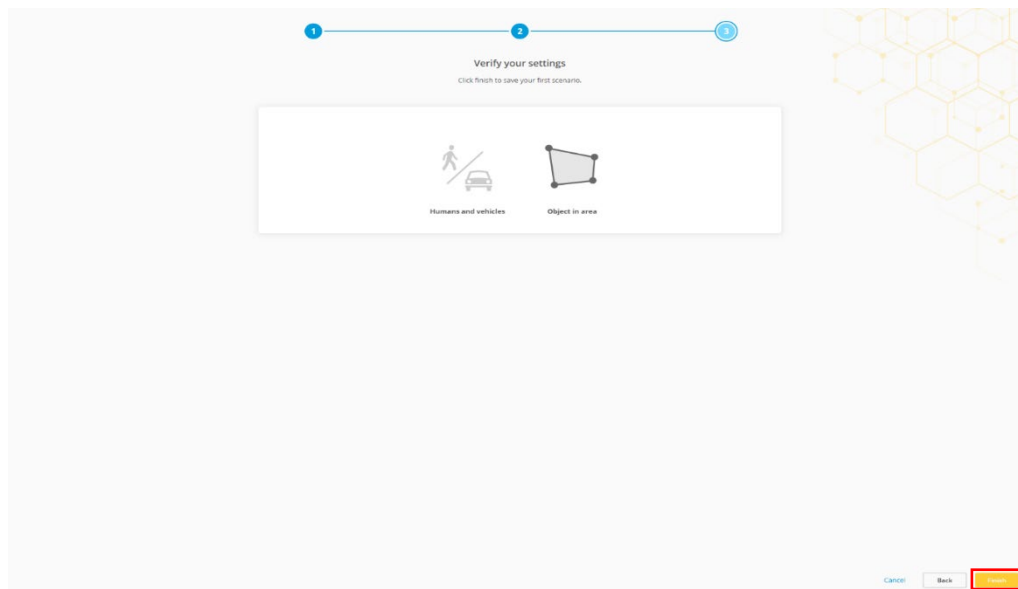
### 3. Select trigger conditions.



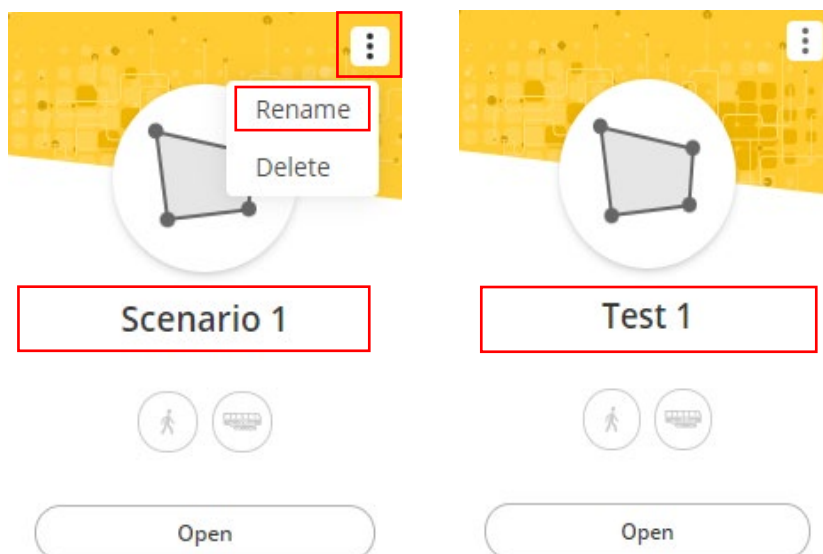
### 4. Configure the trigger condition for your scene within the camera's field of view.



## 5. Verify your settings.



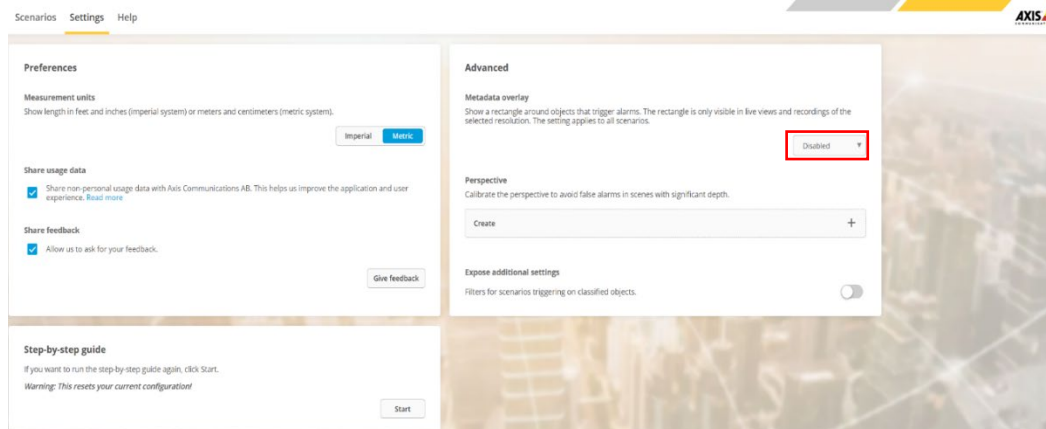
## 6. You can rename your scenarios to make the trigger conditions easier to find.



**NOTE:** When you have completed the step-by-step guide, configure the perspective calibration for the scene that has been created.

## 1.4 Step 4 – Enable metadata overlay

1. In AXIS Object Analytics, click settings.
2. In Advanced > Metadata overlay, select the desired resolution to burn in the metadata overlay.



### Advanced

#### Metadata overlay

Show a rectangle around objects that trigger alarms. The rectangle is only visible in live views and recordings of the selected resolution. The setting applies to all scenarios.

#### Perspective

Calibrate the perspective to avoid false alarms in scenes with significant depth.

Create

#### Expose additional settings

Filters for scenarios triggering on classified objects.



### Advanced

#### Metadata overlay

Show a rectangle around objects that trigger alarms. The rectangle is only visible in live views and recordings of the selected resolution. The setting applies to all scenarios.

1920x1080

#### Perspective

Calibrate the perspective to avoid false alarms in scenes with significant depth.

Create

+

#### Expose additional settings

Filters for scenarios triggering on classified objects.



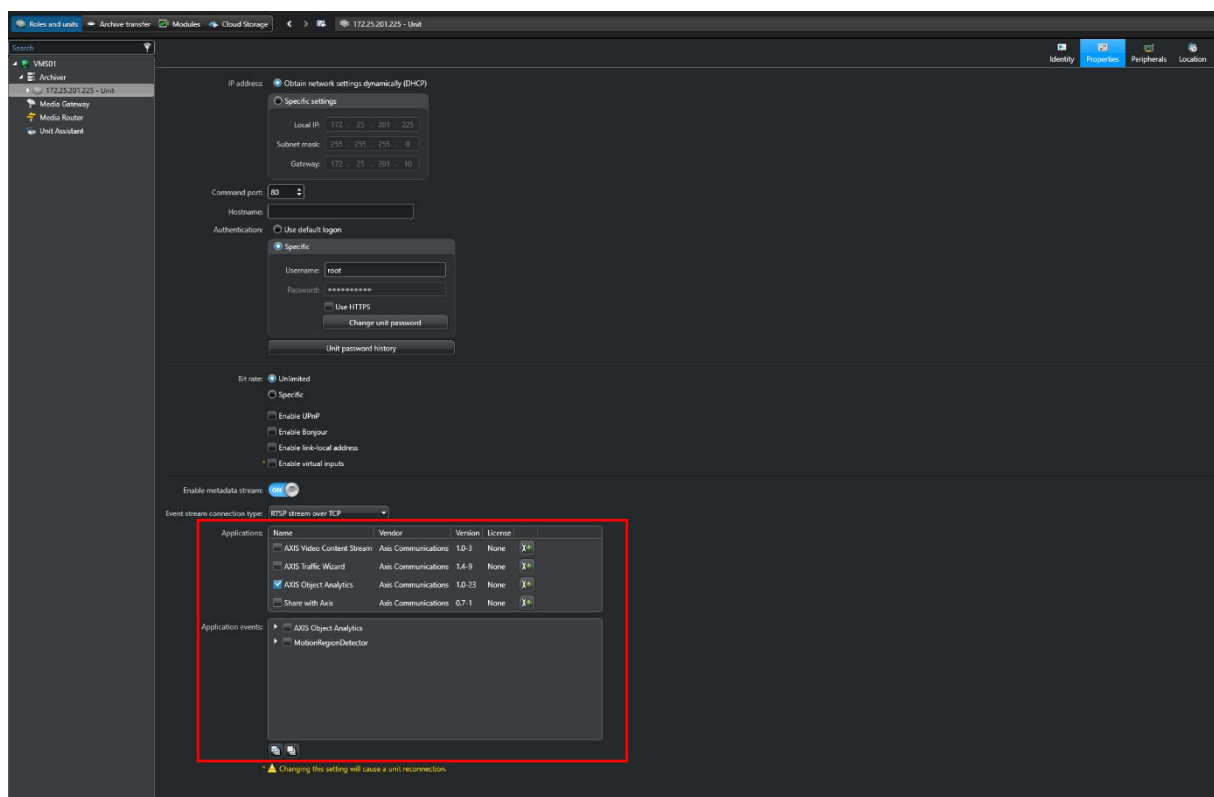
3. The selected resolution will be used for both for the live view and the recordings.

**NOTE:** We recommend that you use the same resolution for recordings as for the metadata overlay

## 2 Genetec™ Config Tool

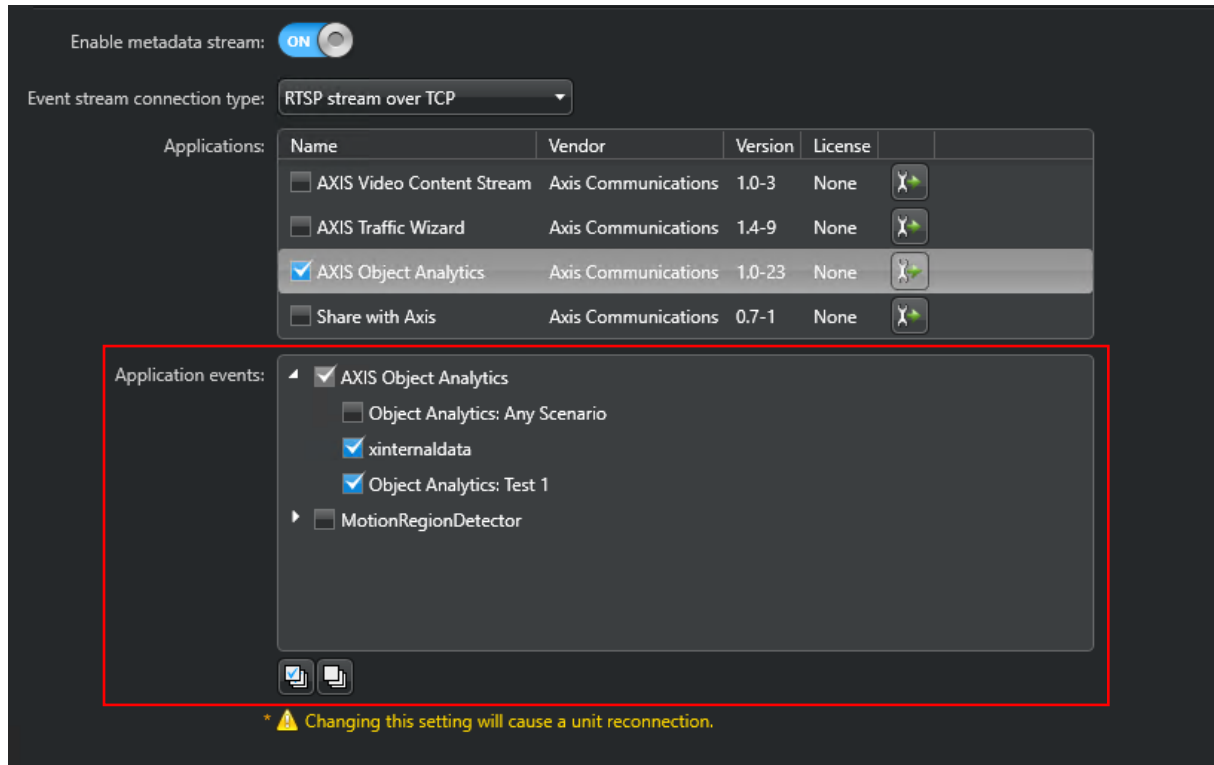
### 2.1 Step 1 – Enable AXIS Object Analytics events

1. When you have installed and added the camera to Genetec, go to the Security Center to enable AXIS Object Analytics events.
2. Open Video/Roles and units.
  - a. Go to the Archiver, then to the Unit, and select Properties.
  - b. Select the camera that is running AXIS Object Analytics and has been configured with scenarios.





3. Select AXIS Object Analytics and enable the following:
  - a. Xinternaldata (this can be turned off depending on system configuration).
  - b. AXIS Object Analytics: Test 1 (or the scenario that has been created).

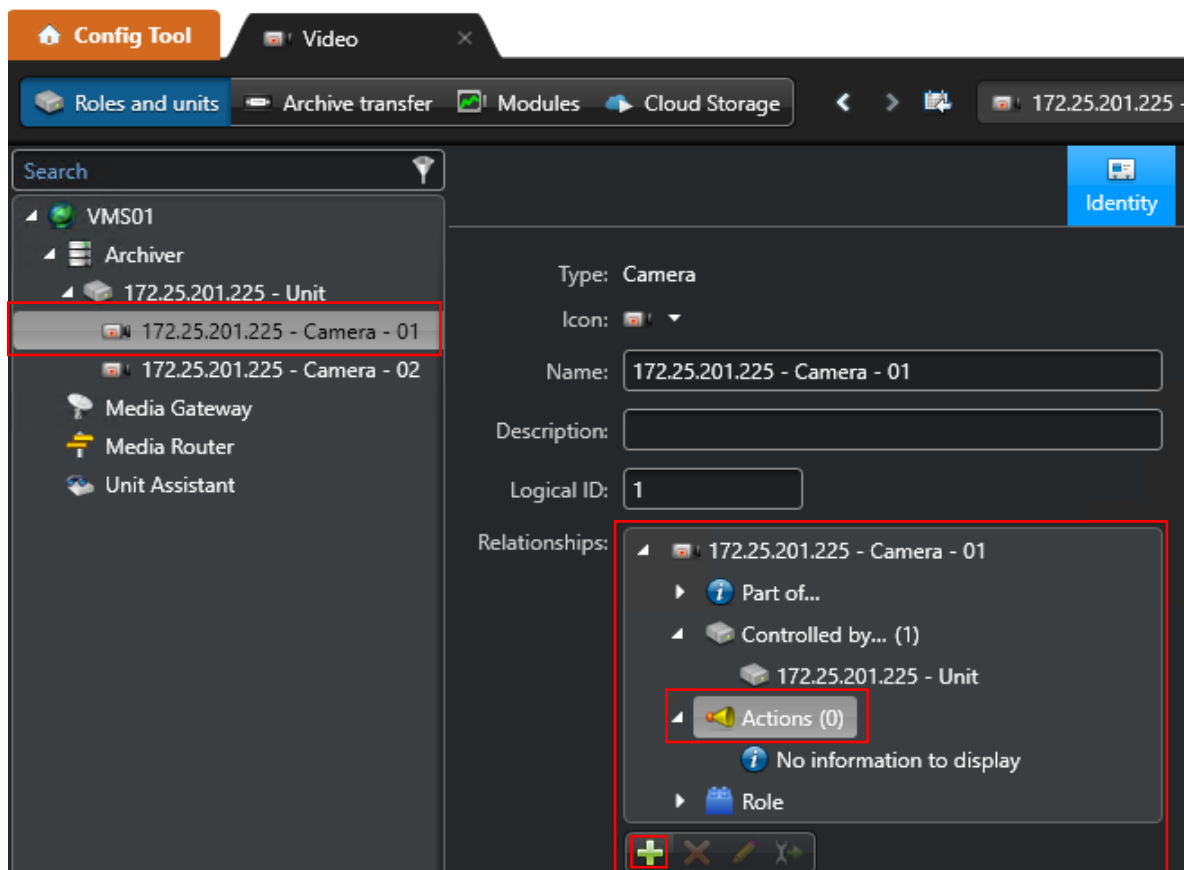


4. To save the changes, click Apply.



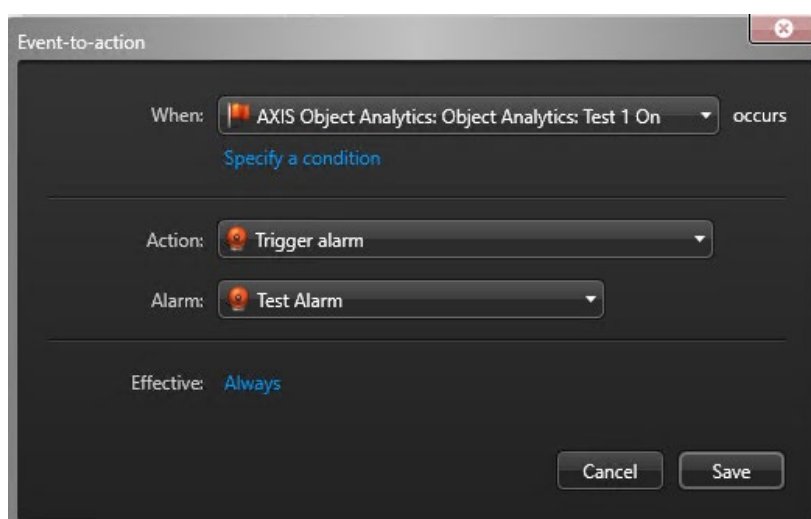
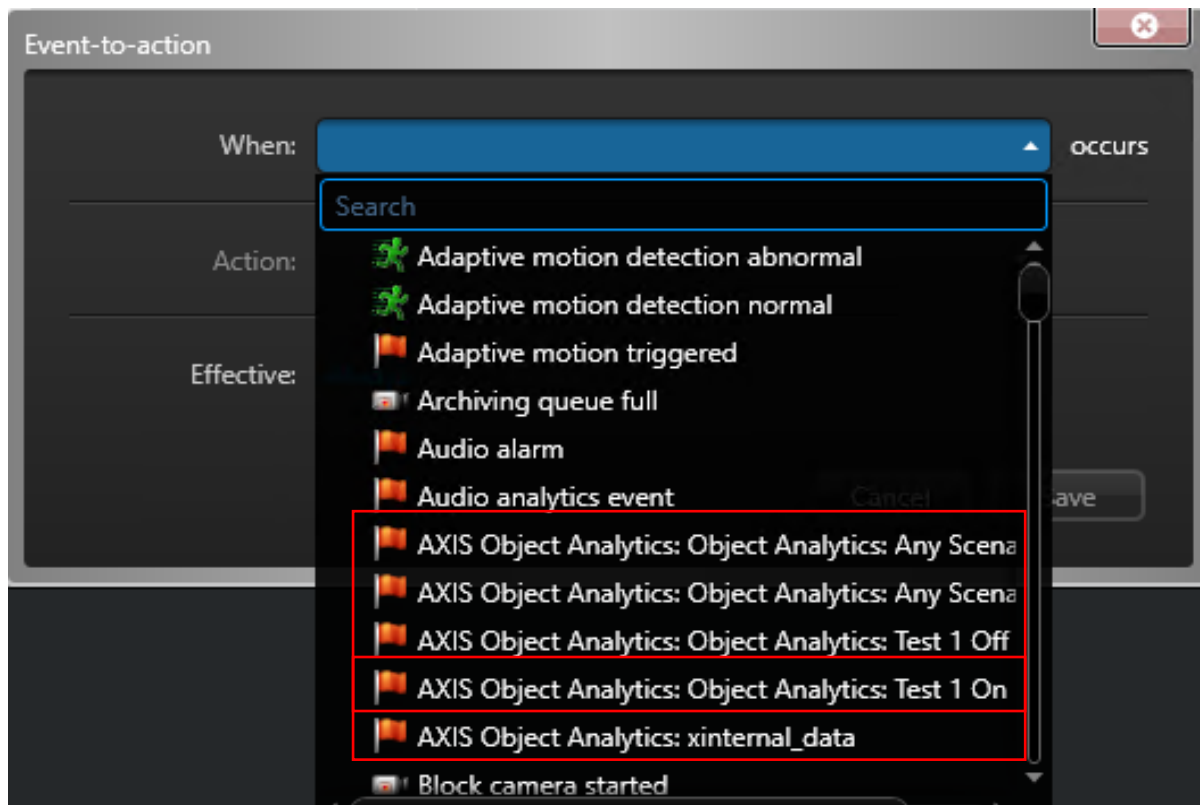
## 2.2 Step 2 – Configure AXIS Object Analytics events

1. Within Archiver, select the camera that has AXIS Object Analytics configured.
2. Go to Relationships and select Actions.
3. To add the Event to action, click +

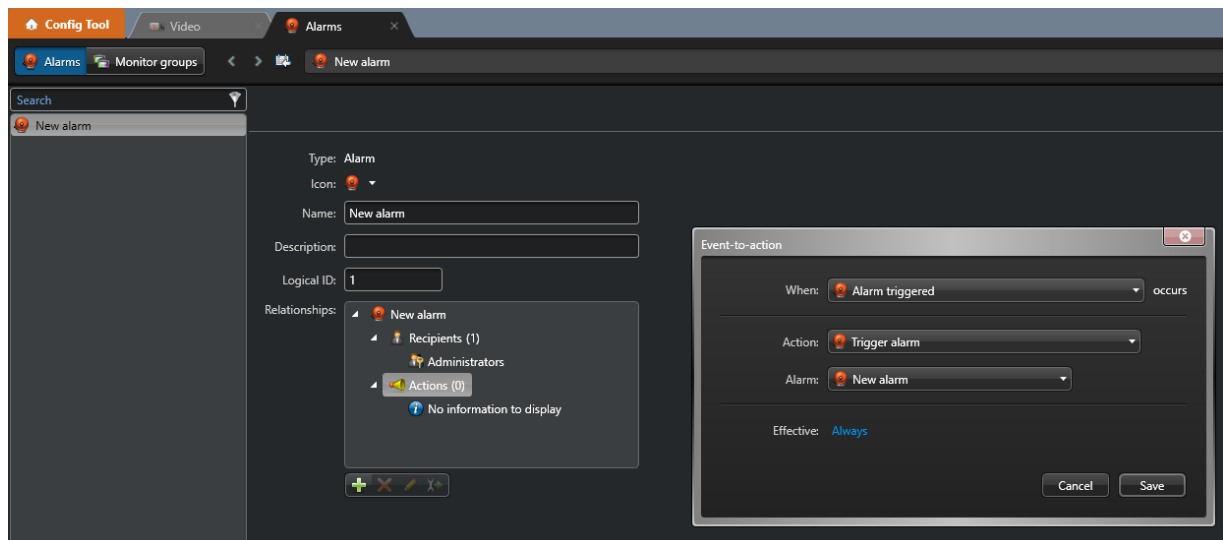
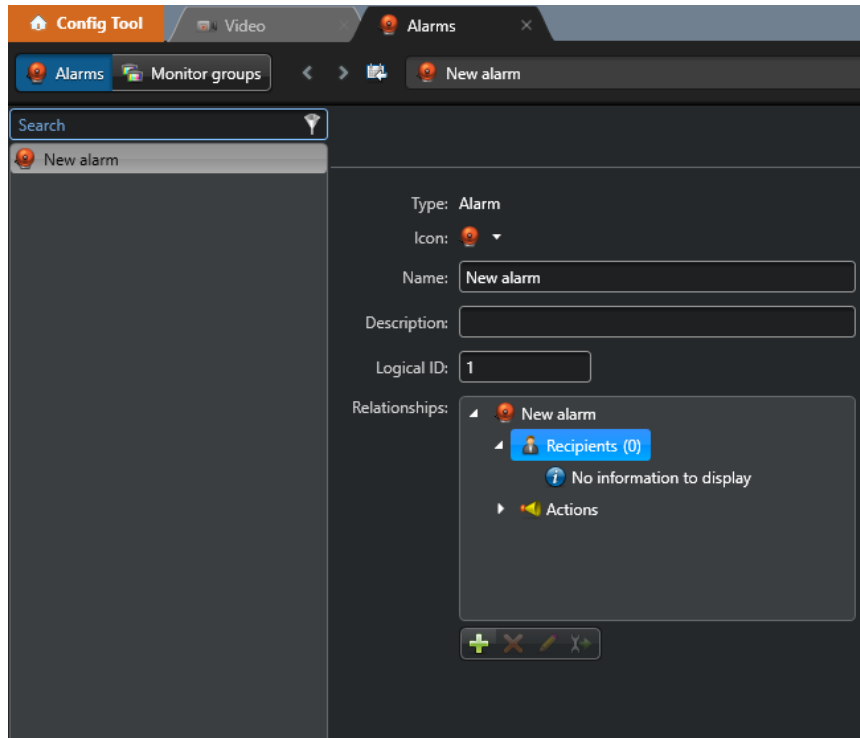


## 2.3 Step 3 – Configure Event to Action sequence

1. Select AXIS Object Analytics and the scenario.
2. Select the action that needs to be configured.
3. Select the type of alarm that has been created.




4. Configure an Alarm recipient.
  - a. Within the Alarms section, create the recipients list to receive the notification on the alarm.
  - b. List the action to take once the alarm has taken place.



The final view of the Actions that have been configured:

Type: Camera







Icon:  ▼




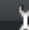
Name:

Description:

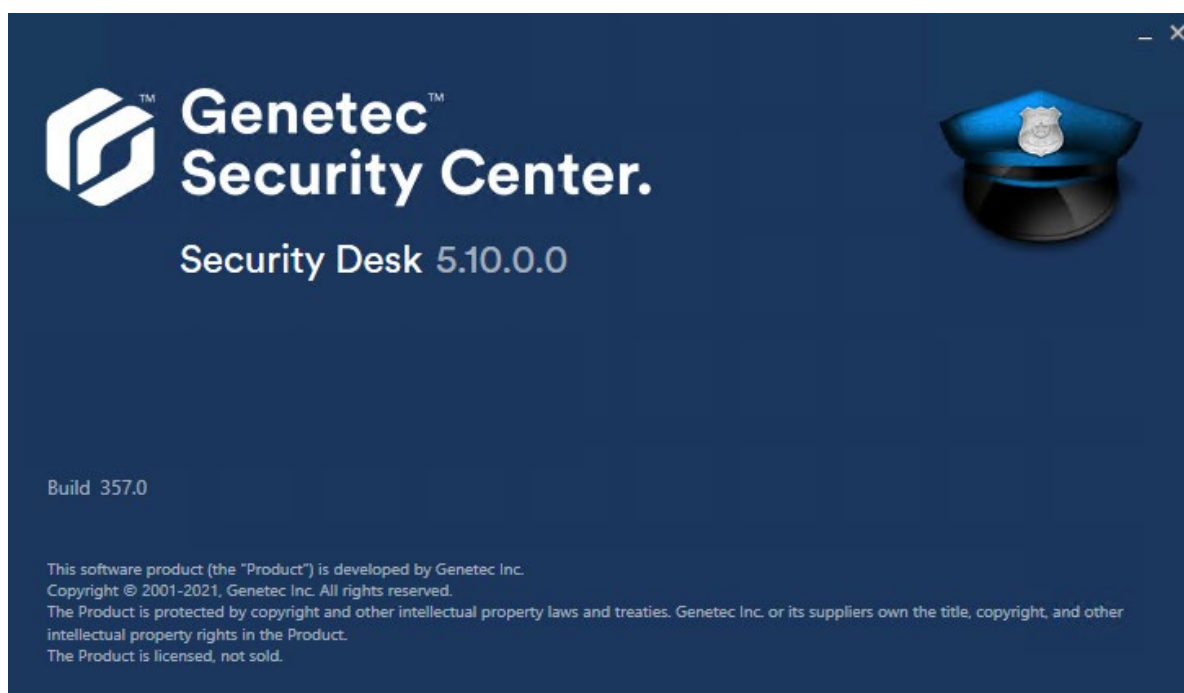
Logical ID:

Relationships:

- 172.25.201.225 - Camera - 01
  -  Part of...
  -  Controlled by... (1)
    -  172.25.201.225 - Unit
  -  Actions (1)
    -  Trigger alarm (Test Alarm) when Custom event
  -  Role

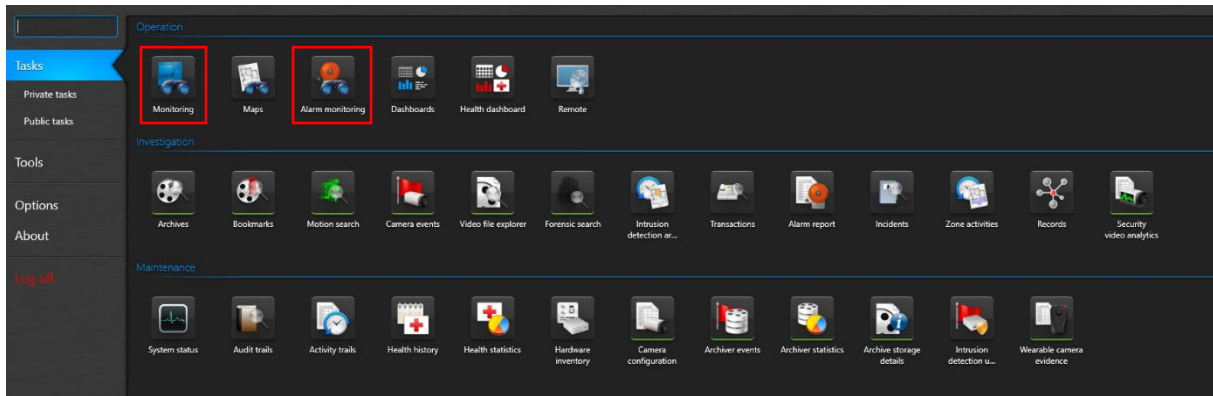
   

### 3 Genetec™ Security Center



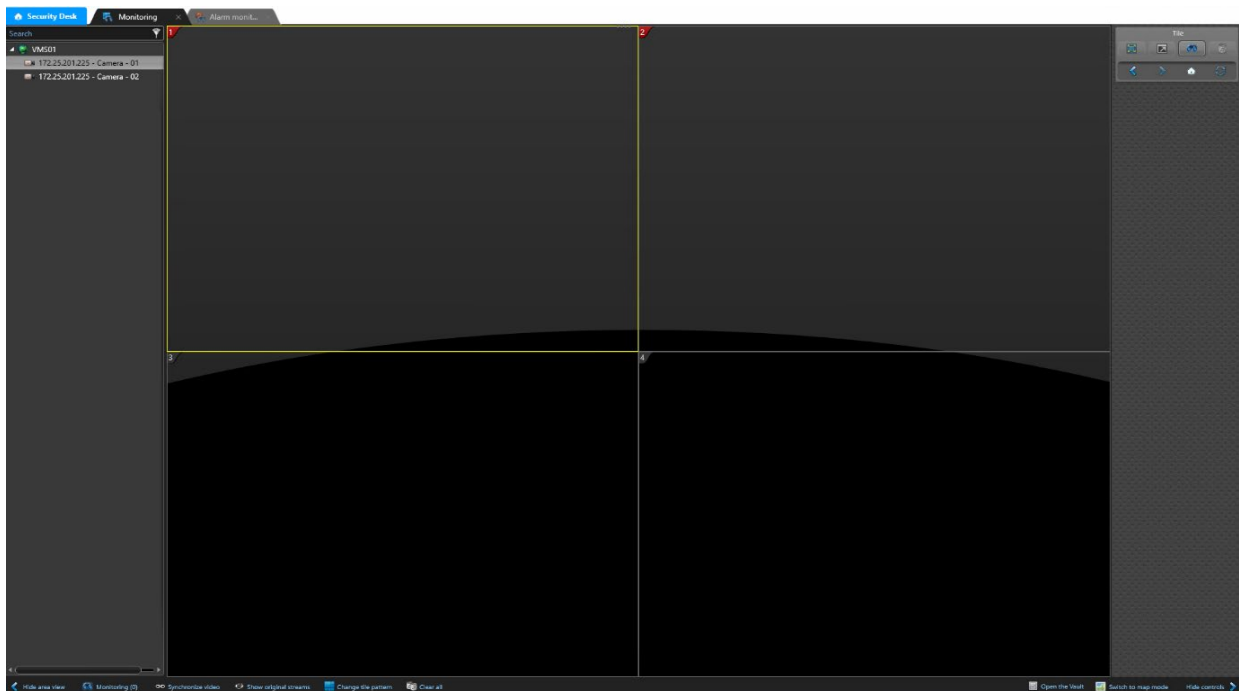
### 3.1 Step 1 – Receive AXIS Object Analytics events

1. In the Security Center, in Tasks, configure the live view and the alarming view.

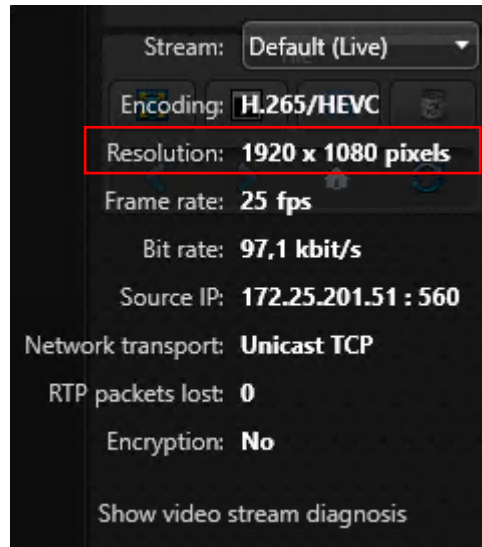
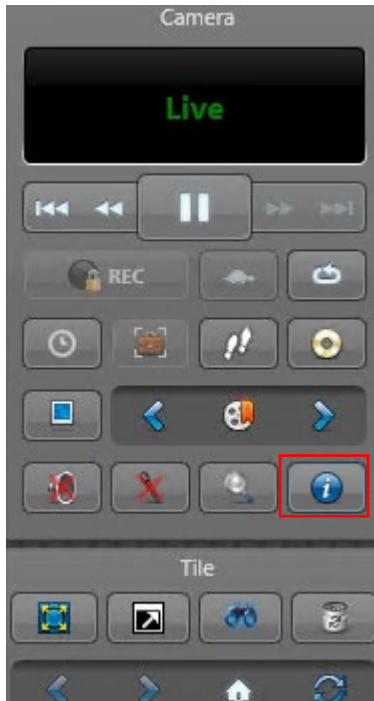


### 3.2 Step 2 – Receive AXIS Object Analytics events within the Monitoring View

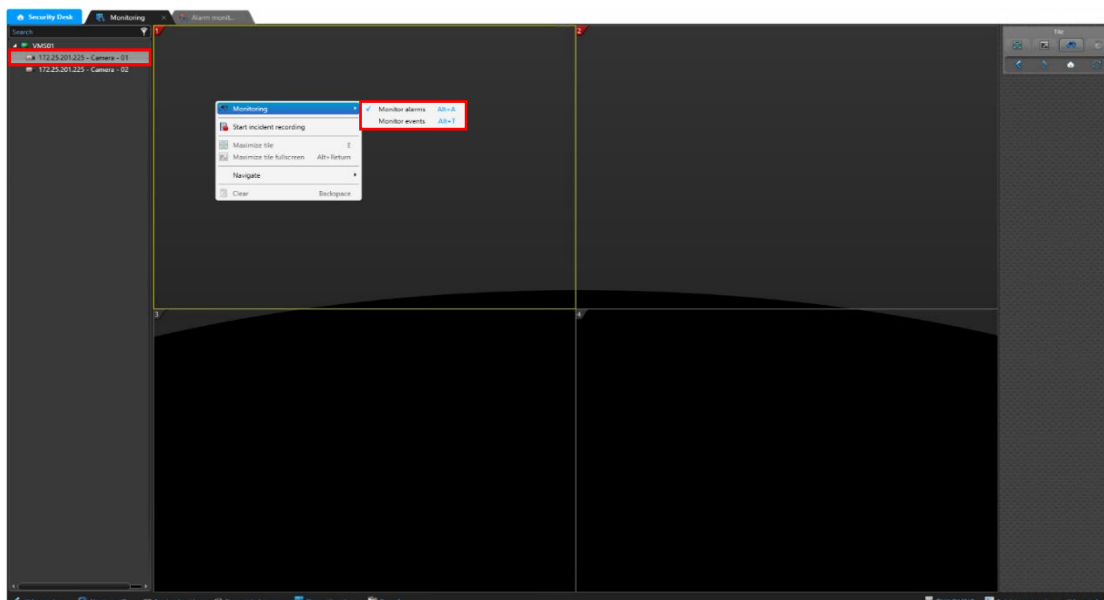
1. Add the camera views to the tile grid.



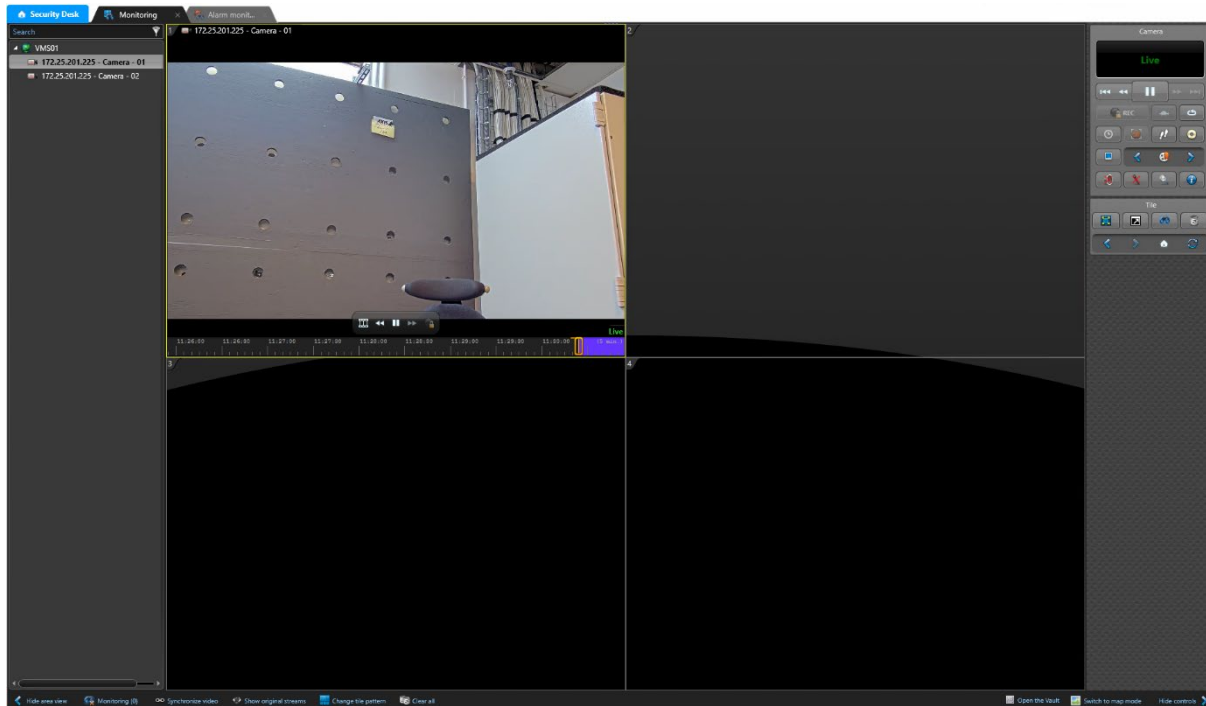
- To get the Metadata overlay into the live view and recording view, configure the resolution of the live view to the resolution selected in AXIS Object Analytics.



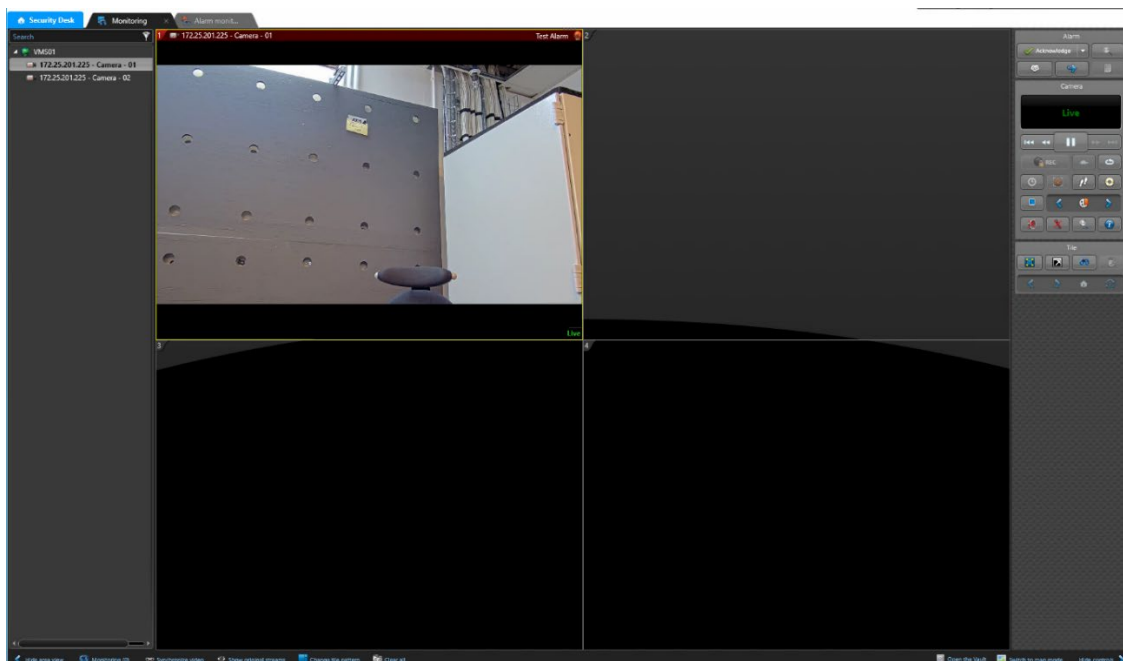
- To configure the tiles to display live view or alarming views, right-click the tile.



## Live View



## Live View with active alarm

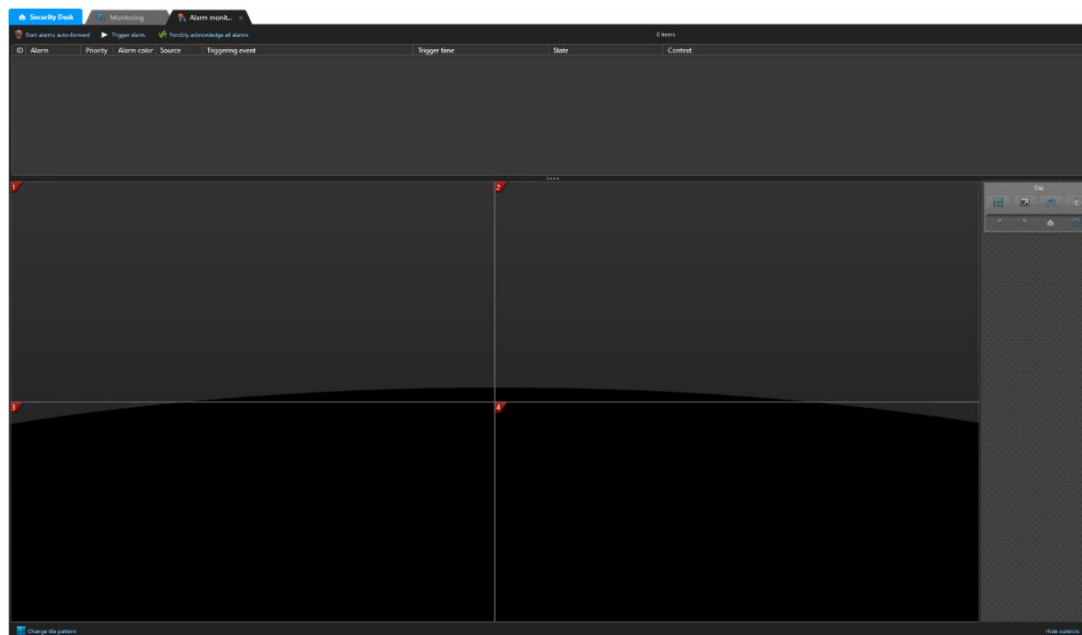




### Live View with active alarm and burnt-in metadata



### Standard Alarm monitoring view



### 3.3 Step 3 – Acknowledge AXIS Object Analytics events

1. The AXIS Object Analytics events will be sent and displaying in the Alarm Monitoring view.
2. You can review the Event and acknowledging and clear the event that triggered.

