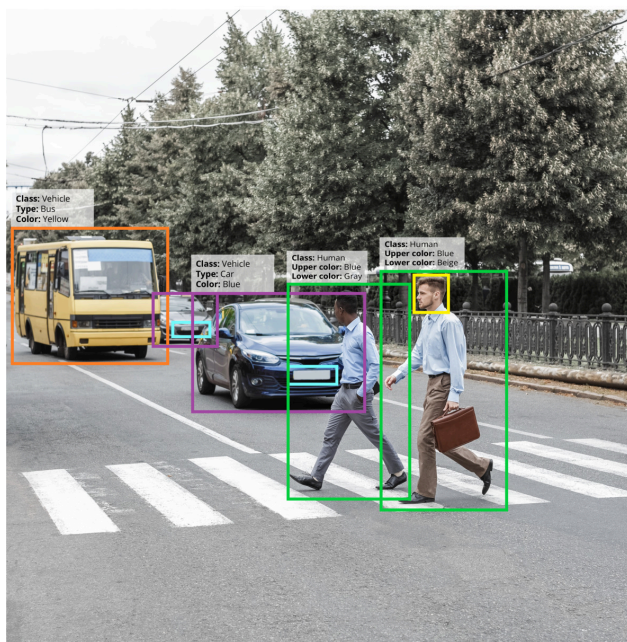


# AXIS Scene Metadata

## Actionable insights through scene analysis

AXIS Scene Metadata enhances scene understanding, providing critical details such as object classes (human or vehicle), clothing and vehicle colors, license plates, and speed data. This enables rapid decision-making, automated actions, and simplified search. AXIS Scene Metadata acts as a bridge between analytics at the edge and actionable insights, making data accessible and manageable. Seamlessly integrated with third-party solutions through standardized methods, and delivered directly from Axis cameras to your VMS, AXIS Scene Metadata helps reduce system and operational costs while ensuring efficiency and precision.

- > Drive actions and decisions by classifying data
- > Improve scene understanding and get insights
- > Make video searchable
- > Optimize system efficiency by edge analysis



## AXIS Scene Metadata

### General

#### Typical use cases

Delivers AI-based detections and granular classifications of moving objects to enable forensic search, scene understanding, actionable insights, and to identify trends and patterns.

#### Supported devices

Axis cameras with ARTPEC-7, ARTPEC-8, ARTPEC-9 or CV25

Axis radars

#### Compute platform

Edge

#### Configuration

Enable scene metadata in the device's web interface, through an API, or through a VMS

### Capabilities

#### Features

**Video:** frame and consolidated metadata delivery methods for real-time and post-processing applications, best snapshot to include a cropped image of detected objects in metadata output, metadata visualization in the device's web interface

#### Object classes

**Video:** humans, faces, vehicles (types: cars, buses, trucks, bikes), license plates

**Radar:** humans, vehicles

#### Object attributes

**Video:** vehicle color, upper/lower clothing color, bag, confidence, position, license plate information<sup>1</sup>

**Radar:** confidence, position, speed, distance, direction, longitude and latitude

#### Limitations

Insufficient contrast can affect detection and classification performance.

### System integration

#### Application Programming Interface

Open API for software integration, including VAPIX®, AXIS Camera Application Platform (ACAP), and the ability to consume metadata stream in ACAP Native SDK; specifications at [axis.com](https://axis.com)  
ONVIF® Profile M, specification at [onvif.org](https://onvif.org)

#### Network protocols

RTSP, MQTT

#### System tools

AXIS Metadata Monitor

1. Requires an AXIS Q1686-DLE Radar-Video Fusion Camera with AXIS License Plate Verifier.