

HOW TO.

Integration Guide for Genetec™ Clearance and Axis body worn system

Contents

Introduction	3
Step 1 – Create the connection file in Clearance	4
Step 2 – Install and configure Axis body worn system	5
Step 3 – User and camera configuration in Clearance	6
Step 4 – Create a recording and upload to Clearance	7
Example use case – Assign a different user to a camera	8

Introduction

This document explains how to integrate Axis body worn system with Genetec™ Clearance. It assumes the reader has basic knowledge of Axis body worn system and Clearance.

Before you begin, ensure your user account for Genetec™ Clearance has been activated through an activation link sent to you by email. It assumes your user account is part of the “Account Administrators” group. In addition, an active license that supports the number of Axis body worn cameras should have been added to Genetec™ Clearance.

Prerequisites

Axis body worn system

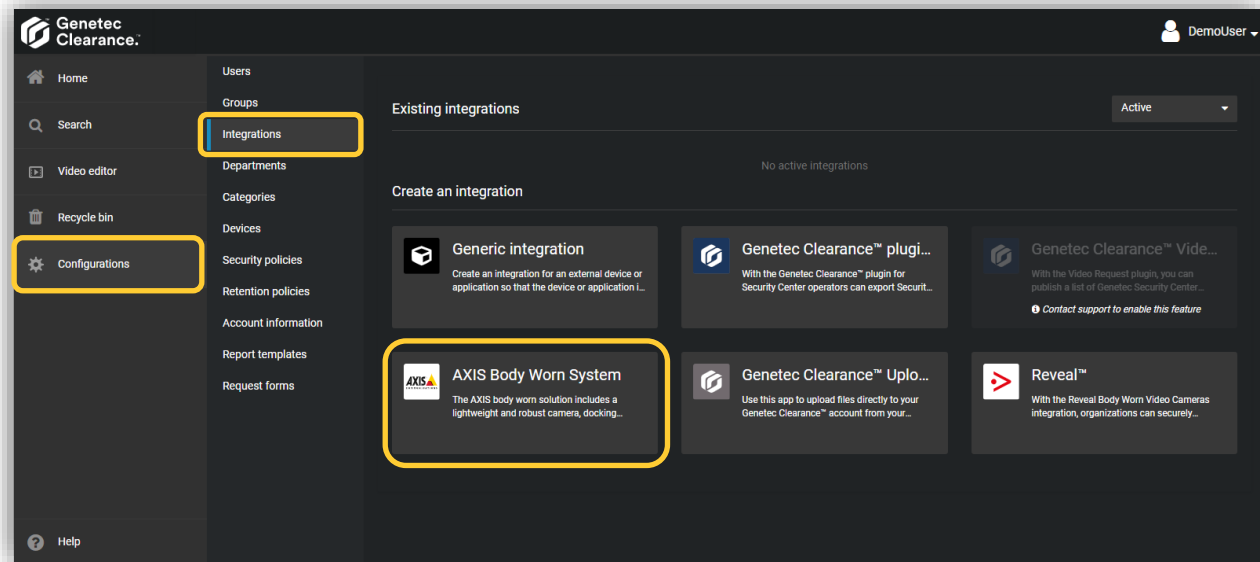
Axis body worn system firmware 9.75.1 or above

AXIS IP Utility version 4.14 or above

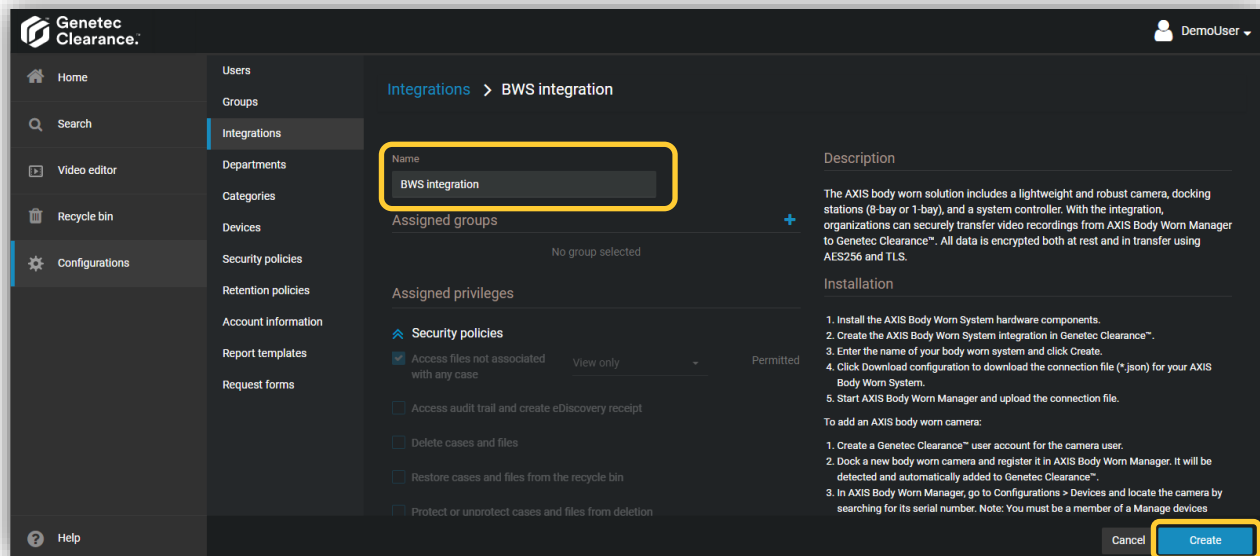
Please note that Axis doesn't take any responsibility for how this configuration may affect your system. If the modification fails or if you get other unexpected results, you may have to restore the settings to default.

Step 1 – Create the connection file in Clearance

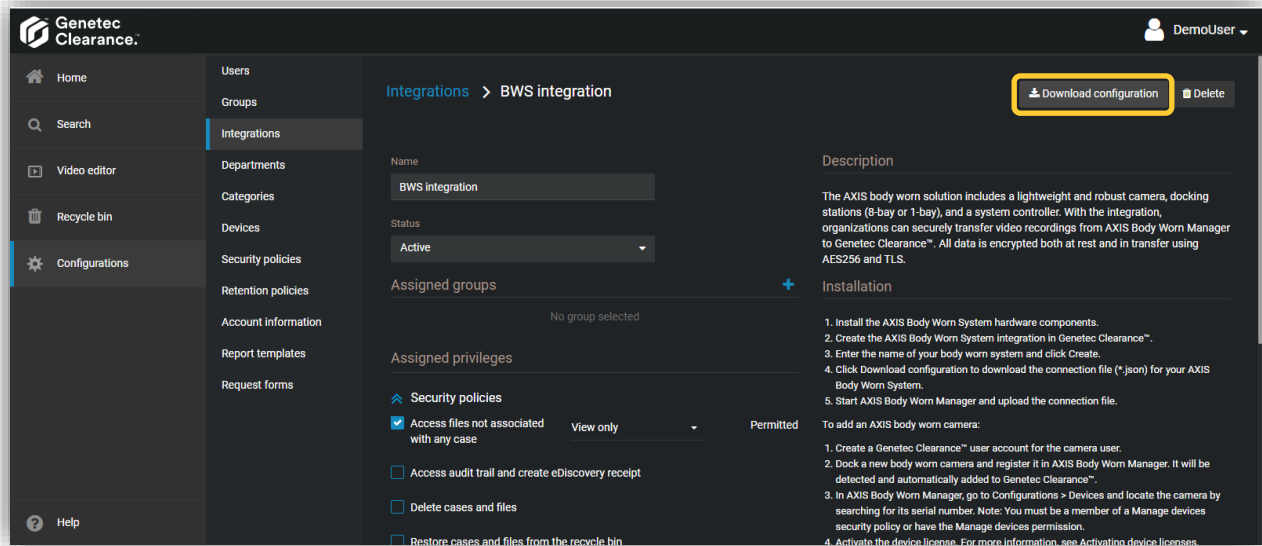
1. Follow the link to Genetec™ Clearance in your account activation email and log in. Choose **Configurations** in the left navigation bar and then **Integrations** in the list of sub menu. Under **Create an integration** section, choose **AXIS Body Worn System**.



2. In the “New integration” page, enter a name for the integration, e.g. “BWS integration”. Click on **Create** and the integration is created.



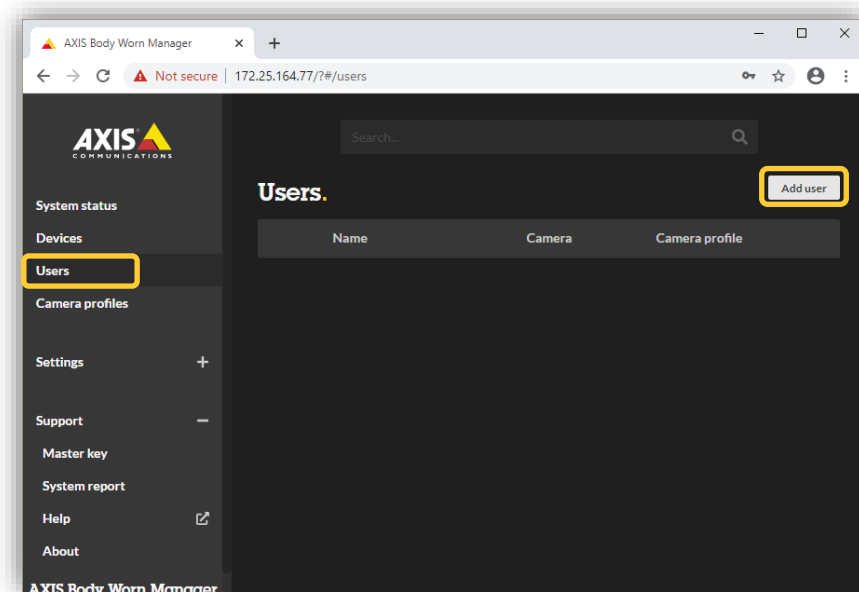
3. Click on **Download configuration** on the top right corner to download the connection file “BWS integration.json” which can be uploaded to the body worn system later.



For more details, go to the user guide of Genetec™ Clearance.

Step 2 – Install and configure Axis body worn system

1. Install your body worn system.
2. Find the system controller using AXIS IP Utility. Access AXIS Body Worn Manager and follow the setup wizard to configure the system. Upload the previously created connection file “BWS integration.json” when prompted to “Select a content destination”.
3. Create a camera user “NewUser” in AXIS Body Worn Manager (Go to **Users** page and click on **Add user** on the top right). The same user needs to be created in Clearance later.

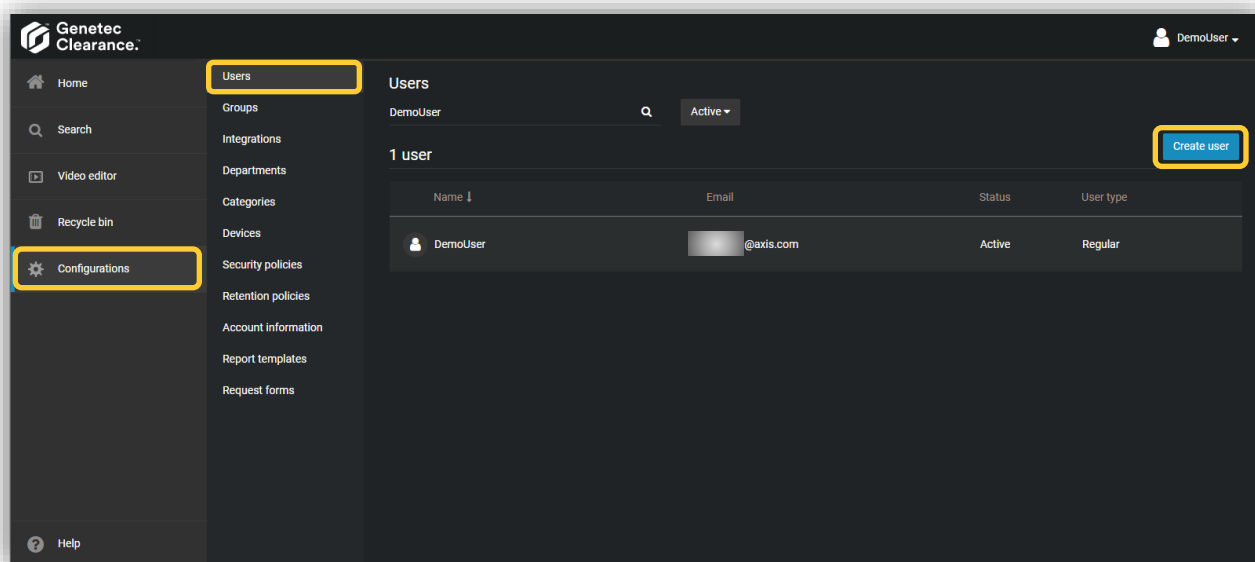


4. Dock a new camera on the docking station connected to the system controller. It will be discovered by AXIS Body Worn Manager right away. Add the camera and rename it to for example “BWC-Demo”. Assign it to the newly created camera user.

For more details, go to the [user manual for Axis body worn solution](#).

Step 3 – User and camera configuration in Clearance

1. Add the camera user “NewUser” in Clearance by choosing **Configurations** in the left navigation bar and then **Users** in the list of sub menu. Click “Create user” to create the new user.

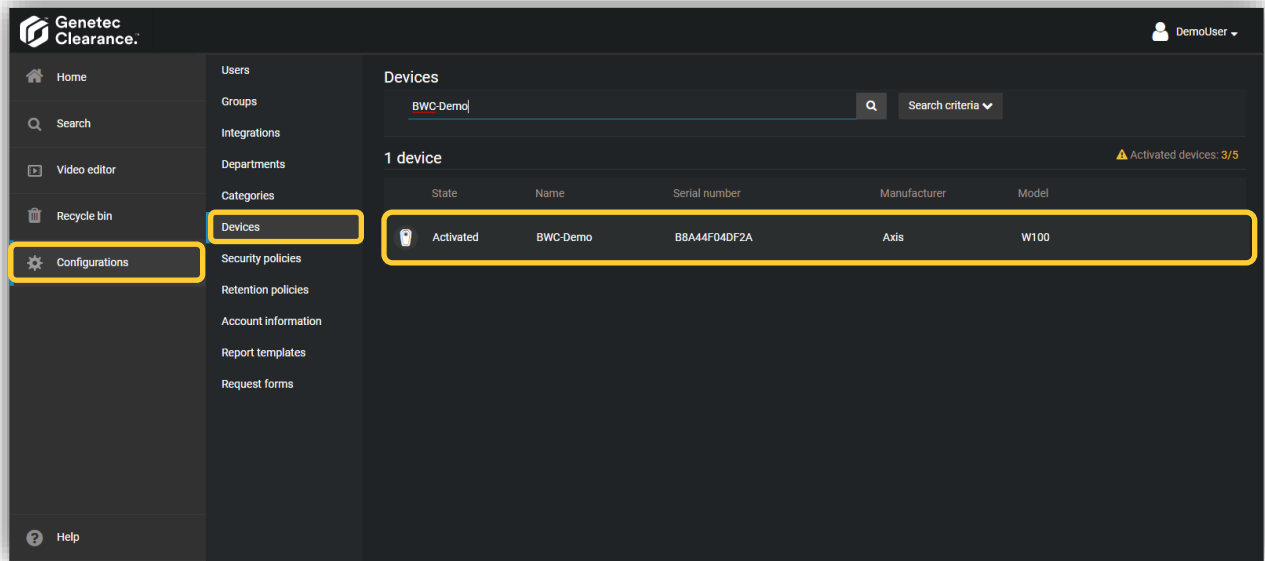


NOTE An email address is required to add the new user. If the user wants to get access to Clearance, he/she needs to activate his/her user account for Clearance through the activation link sent to this email address.

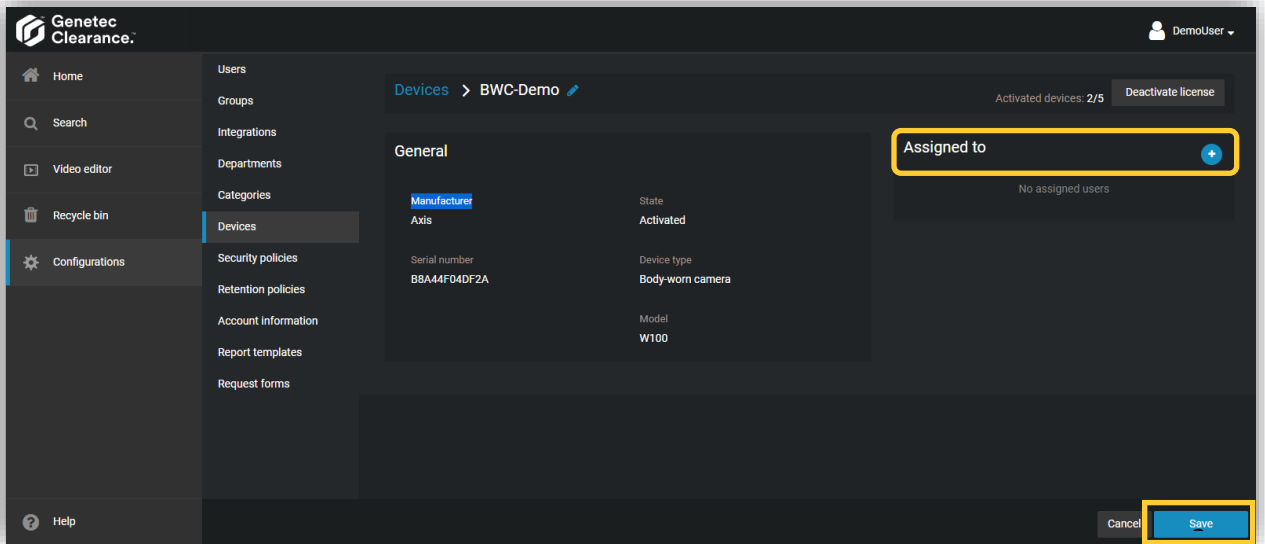
2. Once a camera is added to the Axis body worn system connected to Clearance, the camera is automatically added and activated in Clearance. Find the camera by choosing **Configurations** in the left navigation bar and then **Devices** in the list of sub menu.



Make sure there are enough licenses in Clearance. Otherwise, recordings will not be transferred to Clearance.



3. Click on the camera and assign it to the newly created user using the “+” sign. Now the camera is ready to use.

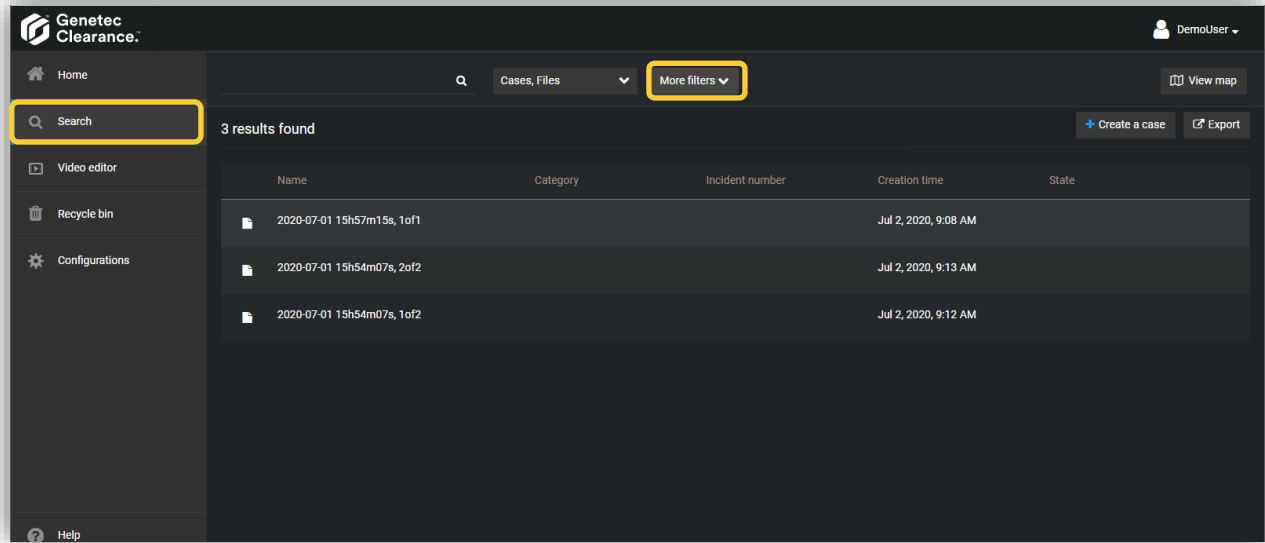


For more details, go to the user guide of Genetec™ Clearance.

Step 4 – Create a recording and upload to Clearance

1. Undock the camera and make a recording before docking it again. The recording together with the metadata will be transferred to the system controller and further on to Clearance. The transfer status can be monitored in AXIS Body Worn Manager (Go to Devices page and click on the camera in Cameras list).
2. Recordings in Clearance can be found by choosing **Search** in the left navigation bar. Search filters can be found by clicking on **More filters** on top of the page.

NOTE A recording can be presented as multiple recording files if it is longer than 15 minutes, i.e. each recording file is no longer than 15 minutes.



Example use case – Assign a different user to a camera

1. Access AXIS Body Worn Manager and create a new user “NewUser1”. Go to **Devices** and click on the camera “BWC-Demo”. Select “NewUser1” in the **Assigned to** list. “NewUser1” will be assigned to the camera the next time it is docked.
2. In Clearance, go to **Configurations > Users** and create the new user “NewUser1”. Then go to **Configurations > Devices** and find “BWC-Demo”. Click on the device and remove the originally assigned user “NewUser” before assigning it to “NewUser1”.
3. If the original user “NewUser” is no longer needed, it can be removed from AXIS Body Worn Manager. In Clearance, change the status of the same user from “active” to “inactive”. Earlier recordings which belong to “NewUser” will be kept until the retention period has passed.