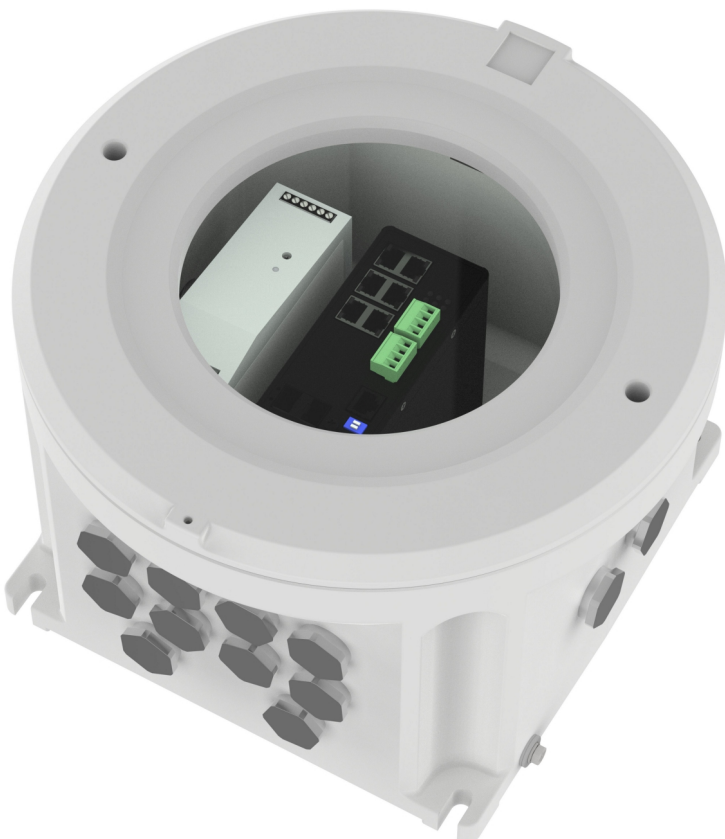


Ex Connection Rail 4-Port PoE++

High-performance PoE++ switch for hazardous areas

Ex Connection Rail 4-Port PoE++ is a high performance industrial PoE++ switch for hazardous areas. It is designed to provide power and network connectivity for up to four explosion-protected PoE cameras. Furthermore, this managed switch is equipped with two additional RJ45 and two SFP data ports that allows for fiber connectivity over long distance installations. The enclosure is equipped with a glass front for easy status verification without opening in a potentially combustible atmosphere. The Ex d-rated enclosure is made from seawater-resistant copper-free aluminum and is ready for wall mounting.

- > **Four 60 W PoE ports**
- > **ATEX, IECEx Ex d IIC/IIIC**
- > **Dual SFP ports**
- > **Resistant to corrosion**
- > **Visual status verification**



Ex Connection Rail 4-Port PoE++

Approvals		Connectors
EMC	EN 55035, EN 55032 Class A, EN 61000-3-2, EN 61000-3-3, EN 61000-6-1, EN 61000-6-2, EN 61000-6-3, EN 61000-6-4 Australia/New Zealand: RCM AS/NZS CISPR 32 Class A	PoE ports: 4x RJ45 10BASE-T/100BASE-TX/1000Base-T (IEEE 802.3at/bt, max.60W per port) Data ports: 2x 10Base-T/100Base-TX/1000Base-T SFP ports: 2x 100/1000X Power: Terminal connector 14x M25x1.5 cable entries
Environment	IEC/EN 60529 IP66	Operating conditions
Explosion	IEC/EN 60079-0, IEC/EN 60079-1, IEC/EN 60079-31	-40 °C to 50 °C (-40 °F to 122 °F) Humidity 10–100% RH (condensing)
Certifications	Model key: T04.5-D.BOR-4PoE++-1000Base-XX ATEX II 2 G Ex d IIC [op pr] T5 Gb II 2 D Ex tb IIIC [op pr] T95°C Db Certificate: ATEX TÜV 10 ATEX 7969 X IECEX II 2 G Ex d IIC [op pr] T5 Gb II 2 D Ex tb IIIC [op pr] T95°C Db Certificate: IECEX-TUR-16.0025X EAC Ex II 2G Ex d IIC [op pr] T5 Gb II 2D Ex tb IIIC [op pr] T95°C Db IP66 Certificate: No.TC: RU C-DE.AБ61.B.00380/19	Storage conditions
		-40 °C to 85°C (-40 °F to 185 °F)
		Dimensions
		Diameter: ø 348 mm ø 13.7 in Height: 230 mm (9.1 in)
		Weight
		21 kg (46 lb)
		Warranty
		5-year warranty, see axis.com/warranty
General		Sustainability
Casing	Copper-free, seawater-resistant aluminum alloy Glass window Coated in RAL7035	Substance control
Power	PoE class: PoE+ IEEE 802.3at Type 2 Class 4 Power consumption: max. 240 W Input: 100–240 V AC Output: 4x 60 W	PVC free RoHS in accordance with EU RoHS Directive 2011/65/EU/ and EN 63000:2018 REACH in accordance with (EC) No 1907/2006. For SCIP UUID, see axis.com/partner .
		Materials
		Screened for conflict minerals in accordance with OECD guidelines To read more about sustainability at Axis, go to axis.com/about-axis/sustainability
		Environmental responsibility
		axis.com/environmental-responsibility Axis Communications is a signatory of the UN Global Compact, read more at unglobalcompact.org