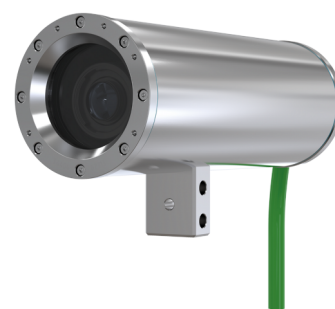


ExCam XF P1377 Explosion-Protected Camera

Zone-certified fixed camera with excellent image quality

Certified (ATEX, IECEx, EAC Ex, IA and PESO) for use in potentially combustible environments, this lightweight camera offers high quality, high resolution images of people and objects. Featuring Axis Lightfinder and Axis Forensic WDR, it delivers true colors and great details in challenging light or near darkness. It includes electronic image stabilization for stable images despite vibration. And, intelligent i-CS lens technology facilitates fast and easy installation with remote zoom. Built-in cybersecurity features such as signed firmware and secure boot ensure the integrity and authenticity of the firmware. Furthermore, Axis Zipstream with support for H.264/H.265 significantly lowers bandwidth and storage requirements.

- > **30 fps in 5 MP or up to 180 fps in HDTV 720p**
- > **Lightfinder and Forensic WDR**
- > **Zipstream supporting H.264 and H.265**
- > **Signed firmware and secure boot**
- > **ATEX, IECEx, EAC Ex, IA and PESO**



ExCam XF P1377 Explosion-Protected Camera

Camera		Event conditions	Analytics, shock detection, edge storage events, supervised external input, audio level, time scheduled, MQTT subscribe
Image sensor	1/2.7" progressive scan RGB CMOS	Event actions	Record video: SD card and network share Upload of images or video clips: FTP, SFTP, HTTP, HTTPS, network share and email Pre- and post-alarm video or image buffering for recording or upload Notification: email, HTTP, HTTPS, TCP and SNMP trap PTZ: PTZ preset, start/stop guard tour Overlay text, external output activation, play audio clip, WDR mode, day/night mode MQTT publish
Lens	IR-corrected i-CS lens Varifocal 3.9–10 mm, F1.5 4:3 aspect ratio: Horizontal field of view: 75°–31° Vertical field of view: 55°–23° 16:9 aspect ratio: Horizontal field of view: 75°–31° Vertical field of view: 41°–17° Remote zoom, remote focus	Data streaming	Event data
Day and night	Automatically removable infrared-cut filter	Built-in installation aids	Focus assistant, pixel counter, remote back focus, autorotation
Minimum illumination	5 MP 25/30 fps with Forensic WDR and Lightfinder: Color: 0.15 lux, at 50 IRE F1.5 B/W: 0.03 lux, at 50 IRE F1.5	Analytics	
Shutter speed	WDR: 1/33500 s to 1/5 s No WDR: 1/5000 s to 1/5 s	Applications	Included AXIS Motion Guard, AXIS Fence Guard, AXIS Loitering Guard Supported AXIS Live Privacy Shield, AXIS Perimeter Defender Support for AXIS Camera Application Platform enabling installation of third-party applications, see axis.com/acap
System on chip (SoC)		General	
Model	ARTPEC-7	Casing	IP68-rated, EN 1.4404 (ASTM 316L) stainless steel casing for maximum corrosion protection Casing manufactured and certified by Samcon Prozessleittechnik GmbH, www.samcon.eu
Memory	1 GB RAM, 512 MB Flash	Sustainability	PVC free Free of hazardous brominated and chlorinated flame retardants (BFR/CFR free)
Video		Power	Camera: Power over Ethernet (PoE) IEEE 802.3af/802.3at Type 1 Class 3, max 10.7 W, typical 5.4 W Heater: 24 V DC, max 40 W 24 V DC is required for operating at temperatures below 0 °C (32 °F).
Video compression	H.264 (MPEG-4 Part 10/AVC) Baseline, Main and High Profiles H.265 (MPEG-H Part 2/HEVC) Motion JPEG	Connectors	5 m (16 ft) pigtail cable for network (Cat 6, RJ45 connector) and power
Resolution	2592x1944 (5 MP) to 160x90 2688x1512 (4 MP) to 160x90 1280x720 (HDTV 720p) to 160x90	Storage	Pre-installed AXIS Surveillance microSDXC Card 128 GB Support for SD card encryption (AES-XTS-Plain64 256bit) Recording to network-attached storage (NAS) For SD card and NAS recommendations see axis.com
Frame rate	Capture mode 5 MP: 25/30 fps (50/60 Hz) Capture mode 4 MP: 25/30 fps (50/60 Hz) Capture mode HDTV 720p: 180 fps	Operating conditions	-60 °C to 60°C (-76 °F to 140 °F) Humidity 10–100% RH (condensing)
Video streaming	Multiple, individually configurable streams in H.264, H.265 and Motion JPEG Axis Zipstream technology in H.264 and H.265 Controllable frame rate and bandwidth VBR/ABR/MBR H.264/H.265 Video streaming indicator	Storage conditions	-40 °C to 65 °C (-40 °F to 149 °F) Humidity 5–95% RH (non-condensing)
Multi-view streaming	Up to 8 individually cropped out view areas	Approvals	EMC EN 55035, EN 55032 Class A, EN 61000-3-2, EN 61000-3-3, EN 61000-6-1, EN 61000-6-2 Environment IEC/EN 60529 IP68 Network NIST SP500-267 Explosion EN/IEC 60079-0, EN/IEC 60079-1, EN/IEC 60079-31, TR CU 012/2011, GOST R IEC 60079-0, GOST IEC 60079-1, GOST R IEC 60079-31
Image settings	Saturation, contrast, brightness, sharpness, Forensic WDR: Up to 120 dB depending on scene, white balance, day/night threshold, exposure mode, exposure zones, local contrast, tone mapping, compression, rotation: auto, 0°, 90°, 180°, 270° including Corridor Format, mirroring of images, dynamic text and image overlay, privacy masks, defogging, electronic image stabilization, barrel distortion correction, scene profiles: forensic, vivid, traffic overview	Certifications	Model key: T08-VA2.3.K3.B0R2-LL.H-005.N-P ATEX: II 2 G Ex db IIC T5 Gb, II 2 D Ex tb IIIC T95°C Db Certificate: TÜV 18 ATEX 8218X IECEx: Ex db IIC T5 Gb, Ex tb IIIC T95°C Db Certificate: IECEx TUR 18.0023X IA: Ex db IIC T5 Gb, Ex tb IIIC T95°C Db Certificate: MASC MS/18-3256X EAC Ex: 1Ex db IIC T5 Gb, Ex tb IIIC T 95°C Db Series: T8, Model: T08-VA2.3. Certificate: RU C-DE.AB61.B.00381/19 PESO: Ex db IIC T5 Gb Certificate: A/P/HQ/KA/104/5735
Pan/Tilt/Zoom	Digital PTZ	Dimensions	ø 113 mm (4.4 in) Height: 160.5 mm (6.3 in)
Network			
Security	Password protection, IP address filtering, HTTPS ^a encryption, IEEE 802.1X (EAP-TLS) ^a network access control, digest authentication, user access log, centralized certificate management, brute force delay protection, signed firmware, secure boot		
Network protocols	IPv4, IPv6 USGv6, ICMPv4/ICMPv6, HTTP, HTTPS ^a , HTTP/2, TLS ^a , QoS Layer 3 DiffServ, FTP, CIFS/SMB, SMTP, mDNS (Bonjour), UPnP ^m , SNMP v1/v2c/v3 (MIB-II), DNS/DNSv6, DDNS, NTP, NTS, RTSP, RTP, SRTP, SFTP, TCP, UDP, IGMP, RTCP, ICMP, DHCPv4/v6, ARP, SSH, LLDP, CDP, MQTT v3.1.1, Syslog, Link-Local address (ZeroConf)		
System integration			
Application Programming Interface	Open API for software integration, including VAPIX [®] and AXIS Camera Application Platform, specifications at axis.com One-Click Cloud Connection ONVIF [®] Profile G, ONVIF [®] Profile S, and ONVIF [®] Profile T, specification at onvif.org		
Onscreen controls	Electronic image stabilization Day/night shift Defogging Wide dynamic range		

	Length: 334 mm (13.1 in)
Weight	7.8 kg (17.2 lb)
Included accessories	Installation Guide, Windows® decoder 1-user license, SKDP03-T Cable ExCam 5 meter, AXIS Surveillance microSDXC Card 128 GB
Optional accessories	Wall Mount ExCam XF, Pole Mount ExCam XF, EXTB-3 Junction Box ExCam, Non-armored cables ExCam, 10, 25, 95 m (33, 82, 312 ft), Armored cables ExCam, 10, 25, 95 m (33, 82, 312 ft), Ex Connection Rail 4-port PoE PS 24, Ex Connection Rail 8-port PoE PS 24, Weathershield ExCam XF For more accessories, see axis.com
Video management software	AXIS Companion, AXIS Camera Station, video management software from Axis Application Development Partners available at axis.com/vms

Languages	English, German, French, Spanish, Italian, Russian, Simplified Chinese, Japanese, Korean, Portuguese, Traditional Chinese, Polish
------------------	---

Warranty	5-year warranty, see axis.com/warranty
-----------------	---

- a. *This product includes software developed by the OpenSSL Project for use in the OpenSSL Toolkit (<http://www.openssl.org/>), and cryptographic software written by Eric Young (ey@cryptsoft.com).*

Environmental responsibility:

axis.com/environmental-responsibility