

AXIS I8016-LVE Network Video Intercom

Repainting instructions

AXIS I8016-LVE Network Video Intercom

Impact on warranty

Impact on warranty

This product is approved for repaint by Axis, provided that you follow the instructions in this document and at axis.com/warranty-implication-when-repainting.

Risks with repainting

There are several risks when disassembling or assembling an Axis product. There is always a certain yield loss during assembly. Training of operators and the use of correct tools mediates some of the problems but they can never be fully avoided. Some of the risks include:

ESD Damage – Always handle the product in an ESD safe environment. Even if precautions are taken there is always a risk of ESD damage. The damage can remain undetected and cause problems during the lifetime of the equipment.

Paint overspray – Masking the different components of the equipment is critical. Failure to mask sensitive areas can cause problems with assembling the equipment. Any areas that are not painted at factory or have a different surface treatment than the rest of the parts (threads, ground and electrical contact surfaces) must also be masked to ensure function.

AXIS I8016-LVE Network Video Intercom

Repaint the product

Repaint the product

Preparations

- If applicable, disassemble the device according to the instructions in this document.
- Clean all parts that will be repainted thoroughly to remove grease, dust, or oil.
- To ensure reassembly and functionality of the product, mask any openings (for example for screws, LED indicators, or microphones) before you paint.

Pretreatment of parts

Depending on the part material and type of paint applied at factory, different pretreatment should be done for the new paint to adhere as well as possible. Clean the parts properly to remove oil, grease and dust.

Powder coated parts – Use a primer. Alternatively, remove the original powder coating down to the base material, using fine sandpaper, and clean the parts before painting.

Anodised and chromated parts – Use a primer.

Uncoated stainless steel – No special pretreatment is needed, but make sure that the surface is clean before painting.

Plastic – Use a primer.

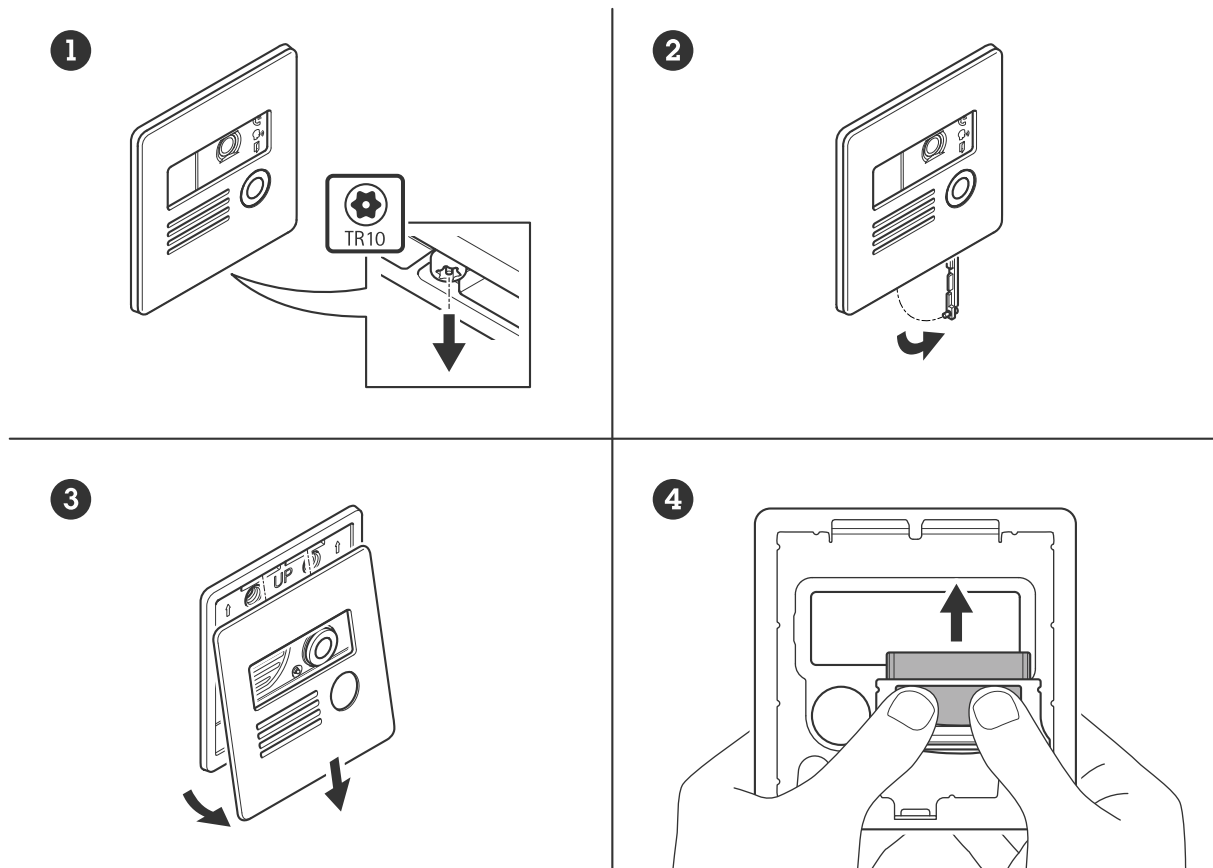
Materials

The materials used in this product is uncoated stainless steel.

AXIS I8016-LVE Network Video Intercom

Repaint the product

Disassembly



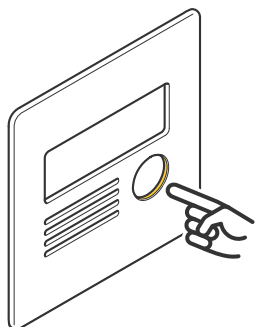
1. Loosen the TR10 screw underneath the face plate.
2. Open the security latch.
3. Tilt the face plate outwards away from the frame, and then pull the face plate down to detach it.
4. Press and slide the speaker mesh on the back of the face plate upwards to detach it.

AXIS I8016-LVE Network Video Intercom

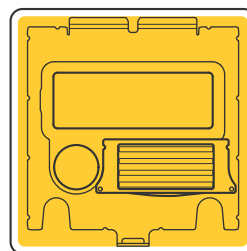
Repaint the product

Masking

1



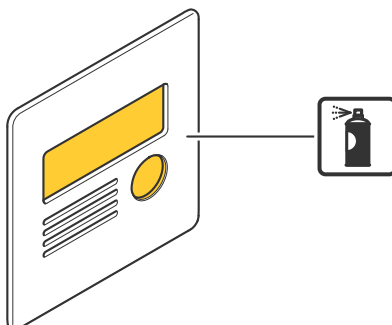
2



1. Apply the masking on the inner surface of the button hole.
2. Apply the masking approximately 3 mm from the outer edge and cover the entire backside of the face plate.

Repainting

1. To make sure all necessary preparations of the face plate have been made, see *Preparations on page 3*.

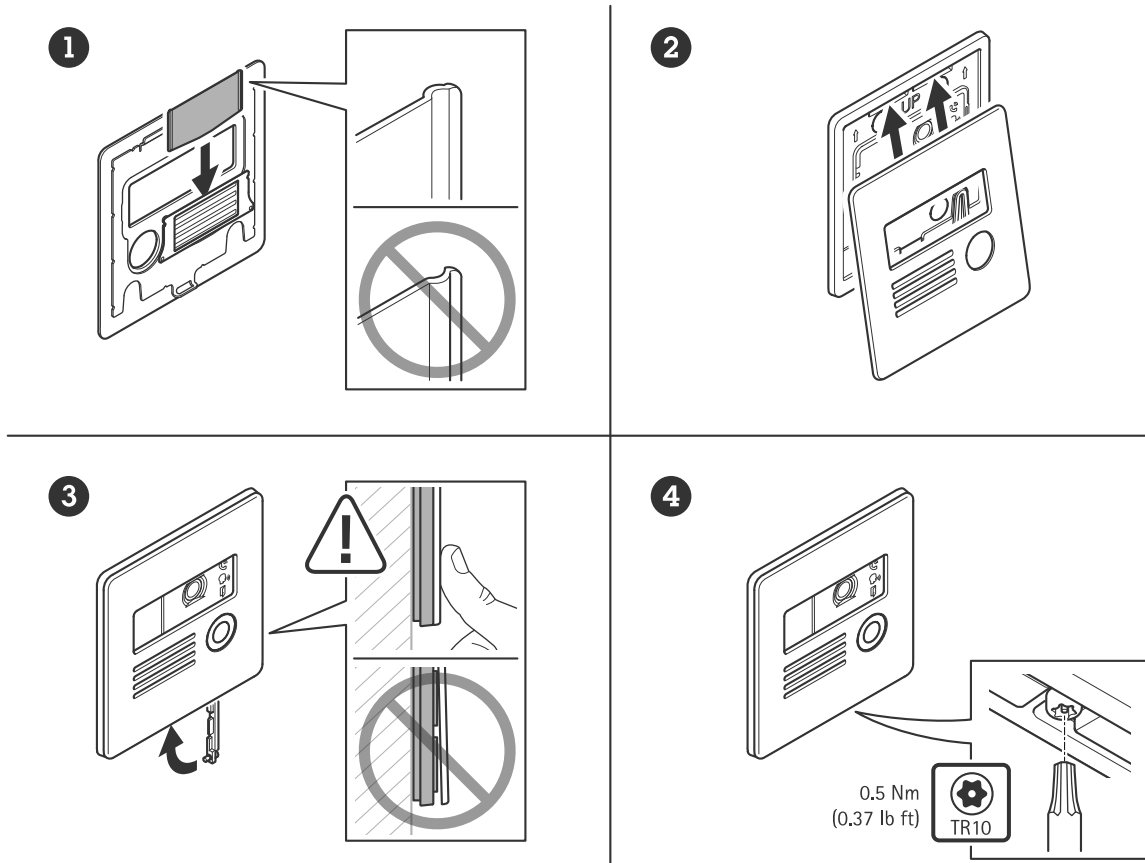


2. Apply a thin and even layer of spray paint according to the instructions of the paint manufacturer on the entire front and sides of the face plate.

AXIS I8016-LVE Network Video Intercom

Repaint the product

Reassembly



1. Reattach the speaker mesh. Make sure that the grooves on the speaker mesh face towards the face plate.
2. Reattach the face plate. Make sure to place the face plate at an angle before closing it.
3. First make sure the face plate is fully closed, before closing the security latch.
4. Tighten the TR10 screw.

