

AXIS Q36-VE Series

AXIS Q3615-VE Network Camera

AXIS Q3617-VE Network Camera

Repainting Instructions

AXIS Q36-VE Series

Impact on warranty

Impact on warranty

Under the condition that the instructions below are pursued, repainting of the products in this document is approved by Axis, and the product warranty is still valid even if the products is subject to disassembly and reassembly as described more fully herein. This exception of Axis' product warranty sets out the limited conditions for the validity of the warranty, and any deviation from the repaint instructions described in this document will void Axis product warranty.

Conditions and instructions:

- All standard precautions should be taken to backup data that is business critical.
- The procedure of repainting will not be supported by Axis technical support.
- The purpose for disassembling and reassembling the product is repaint work only.
- The disassembling and reassembling is carried out in a professional and careful manner and does not intervene with normal operation of the product.

In addition, the product performance may also deteriorate due to the repainting according to the following, non-exhaustive, list:

- Paint adds weight to the product. Speed and acceleration may be affected.
- Darker colors absorb more sunlight. The temperature specification of the product may be limited.
- Increased friction in the joints of the product increases strain and may affect the lifetime expectancy.
- The paint must be compatible and non-damaging to plastics and glass.
- The Axis label with the product part number and serial number must be clear and legible at all times.
- Repainting may only be done to the casing and/or stand of the product. Under no circumstances may bubbles and/or lenses be repainted.
- Repainting may change the tolerances in the mechanics and obstruct the assembly of the product.

THIS EXCEPTION OF AXIS' WARRANTY IMPLIES THAT THE WARRANTY MAY BE APPLICABLE EVEN IF CAMERAS HAVE BEEN DISASSEMBLED AND REASSEMBLED DUE TO REPAINTING. NOTWITHSTANDING ANYTHING TO THE CONTRARY HEREIN, AXIS WARRANTY WILL NOT APPLY IF ANY DEFECT IN DESIGN, WORKMANSHIP OR MATERIALS, IN AXIS' SOLE DISCRETION, IS ATTRIBUTABLE TO THE DISASSEMBLY AND/OR REASSEMBLY OF THE CAMERAS OR THE REPAINTING ITSELF. SAVE THE EXCEPTION STATED HEREIN, AXIS WARRANTY SHALL REMAIN UNCHANGED AND UNAFFECTED IN EVERY OTHER ASPECT. IF AXIS WARRANTY IS APPLICABLE AND ENFORCED, AXIS RESERVES THE RIGHT TO RETURN TO THE END USER ANY REPAIRED OR REPLACEMENT UNITS IN ORIGINAL PAINTED STATE (MANUFACTURER STANDARD).

Detailed information about Axis' warranty is available at www.axis.com/global/en/support/warranty-and-rma/warranty

Risks with repainting

There are several risks when disassembling or assembling an Axis product. There is always a certain yield loss during assembly. Training of operators and the use of correct tools mediates some of the problems but they can never be fully avoided. Some of the risks are listed below:

ESD Damage – Always handle the product in an ESD safe environment. Even if precautions are taken there is always a risk of ESD damage. The damage can remain undetected and cause problems during the lifetime of the equipment.

Dust contamination – Opening a camera may expose the lens and sensor to dust or paint; dust will affect the optical performance. Lenses need to be disassembled in a dust-free environment, preferably a cleanroom.

Paint overspray – Masking of the different components of the equipment is critical. Failure to mask sensitive areas could cause problems with assembling the equipment. Any areas that are not painted from factory or have a different surface treatment than the rest of the part (threads, ground and electrical contact surfaces) must also be masked to ensure function.

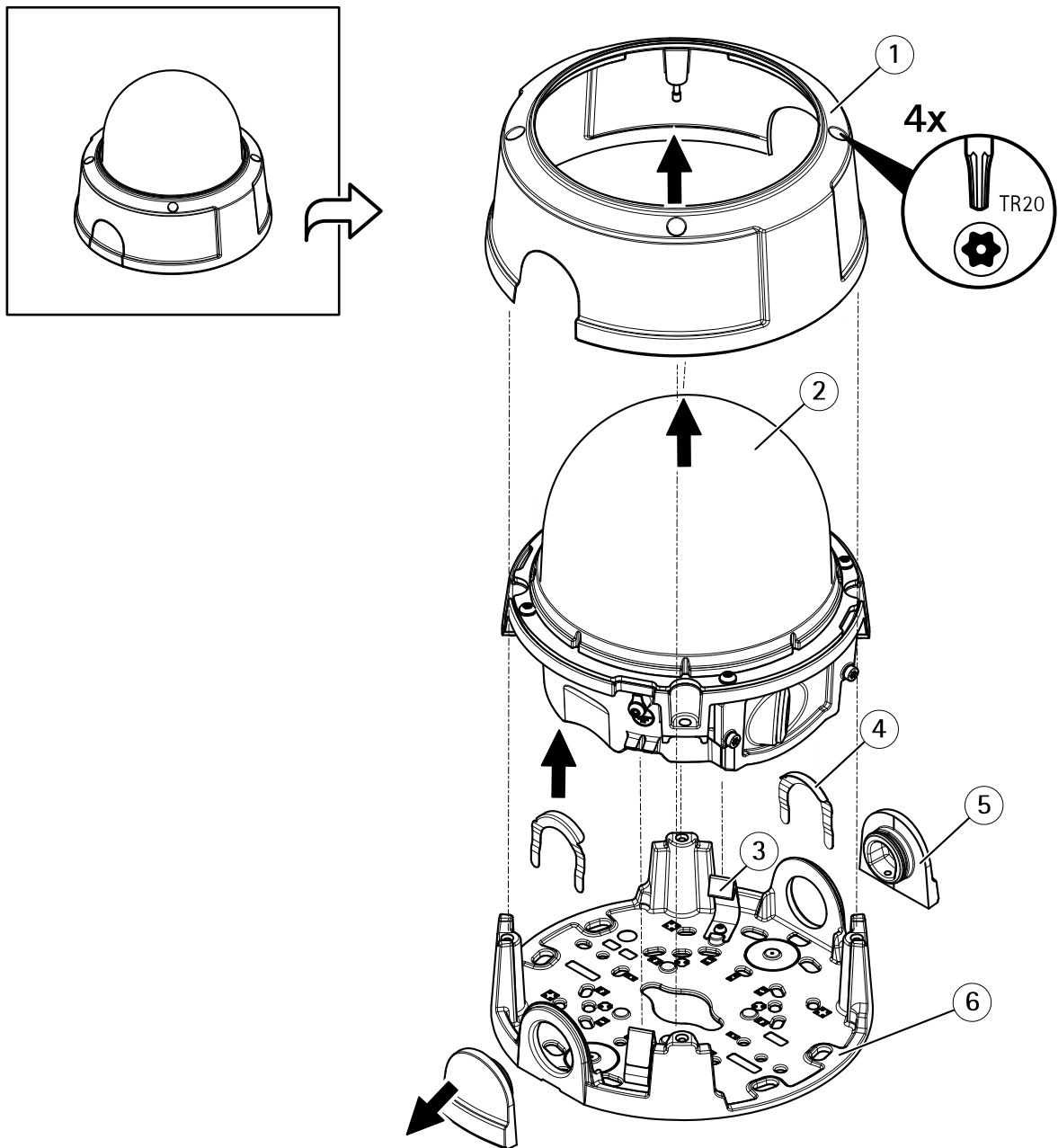
AXIS Q36-VE Series

How to repaint the product

How to repaint the product

Disassembly

1. Remove the dome cover.
2. Remove the dome unit by releasing the spring holders.
3. To remove the two lids, first remove the spring clips.



1 Dome cover

AXIS Q36-VE Series

How to repaint the product

- 2 *Dome unit*
- 3 *Spring holder*
- 4 *Spring clip*
- 5 *Lid*
- 6 *Mounting bracket*

Preparations

- The equipment must be disassembled according to instructions *How to repaint the product on page 3*.
- Each part is then stripped from components and crucial parts are masked to ensure successful reassembly.
- All parts to be repainted should be stripped of gaskets, screws, electrical components, connectors and plugs, windows and domes.
- All parts to be repainted must be thoroughly cleaned to remove grease, dust or oil.
- To ensure reassembly and functionality of the product, openings for screws, LED indicators, or microphones must be masked before painting.

Pretreatment of parts

Depending on the part material and type of paint applied from factory, different pretreatments should be done for the new paint to adhere as well as possible. For all variants though, proper cleaning to remove oil, grease and dust is strongly recommended.

Powder coated parts – Using very fine sandpaper (P240), remove the original powder coating down to the stainless steel surface and clean the parts before painting, or use primer.

Anodised and chromated parts – Primer is required.

Uncoated stainless steel – No special pretreatment is needed. Just make sure the surface is clean before painting.

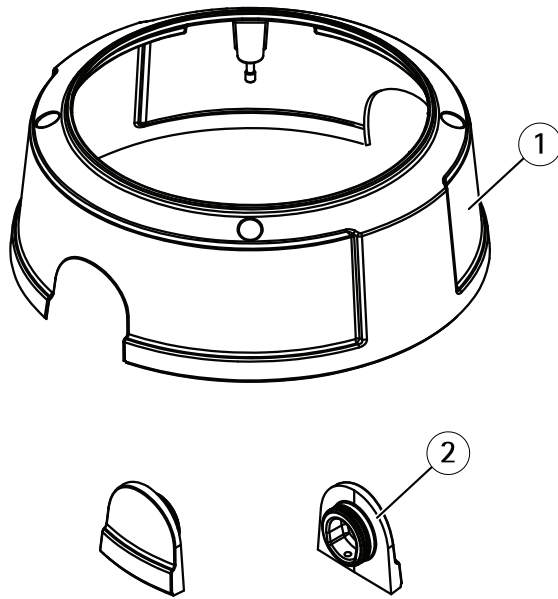
Plastic – Primer is required.

Repainting

1. Make sure all necessary preparations of the dome cover and the two lids have been made, see *Preparations on page 4*.
2. Apply a thin and even layer of spray paint according to the instructions of the paint manufacturer.
3. Let the paint dry.
4. To get a better coverage and clearer color, apply a second layer of spray paint.
5. When the paint is dry, remove the masking and reassemble the product.

AXIS Q36-VE Series

How to repaint the product



- 1 *Dome cover*
- 2 *Lid*

Reassembly

Reassemble the product.

AXIS Q36-VE Series

How to repaint the product

