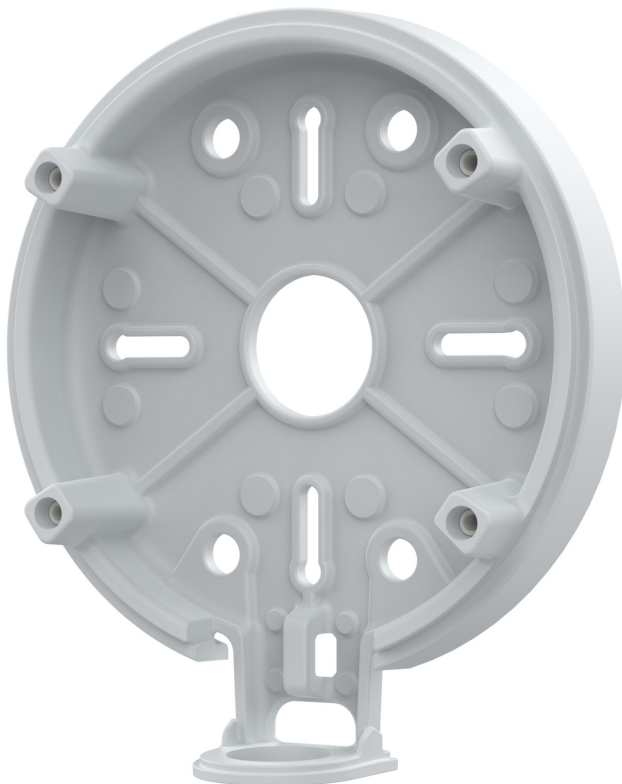


AXIS TQ1603-E Conduit Back Box

For 1/2" conduits and M20 pipes

AXIS TQ1603-E Conduit Back Box enables safe cabling through 1/2" conduits and M20 pipes. It is also compatible with ACI 1/2" conduit adapters.

- > [Part of the Axis Conduit Interface \(ACI\)](#)
- > [Compatible with selected AXIS P14 and Q19 cameras](#)



AXIS TQ1603-E Conduit Back Box

General		Warranty	5-year warranty, see axis.com/warranty
Supported products	AXIS P14 Network Camera Series AXIS Q19 Thermal Network Camera Series	Sustainability	
Environment	Indoor/outdoor	Substance control	PVC free RoHS in accordance with EU RoHS Directive 2011/65/EU and 2015/863 and EN IEC 63000:2018 REACH in accordance with (EC) No 1907/2006. For SCIP UUID, see echa.europa.eu
Casing	Material: powder-coated aluminum casing, stainless steel screws Color: white NCS S 1002-B	Environmental responsibility	axis.com/environmental-responsibility Axis Communications is a signatory of the UN Global Compact, read more at unglobalcompact.org
Cable routing	Side: 1/2" conduit entrance		
Dimensions	133.8 x 150.7 x 32.3 mm (5.3 x 5.9 x 1.3 in)		
Weight	209 g (0.46 lb)		
Box content	Conduit back box, installation guide		

Dimension drawing

