

## AXIS C1110-E Network Cabinet Speaker

Flexible speaker with great sound

Bringing together performance and design, this stylish network cabinet speaker offers digital signal processing for clear voice messages, and rich bass sound ensures great background music. It's built on an open platform, supporting integration with VMS, VoIP telephony, analytics, and more. The built-in microphone enables remote health testing and 2-way communication with echo cancellation. AXIS Audio Manager Edge software comes preinstalled for easy management of users, content, zones, and scheduling. This all-in-one speaker system connects to the standard network using a single cable for power (PoE) and connectivity, and the easy-click mounting bracket supports installations on walls, ceilings, and poles.

- > **Stylish, flexible all-in-one speaker**
- > **Connects to the standard network**
- > **Easy installation with PoE**
- > **2-way audio with echo cancellation**
- > **Remote health testing**



# AXIS C1110-E Network Cabinet Speaker

## Audio hardware

### Enclosure

Two-way bass-reflex type  
Speaker components: 4-inch dynamic cone speaker,  
1.25-inch dome tweeter

### Max sound pressure level

96 dB

### Frequency response

60 Hz – 20 kHz

### Coverage pattern

Horizontal speaker coverage 140°  
Vertical speaker coverage 90°

### Audio input/output

Built-in microphone (can be disabled)  
External microphone, line in

### Built-in microphone specification

50 Hz – 12 kHz

### Amplifier description

Built-in 7 W Class D amplifier

### Digital signal processing

Built-in and pre-configured

## Audio management

### AXIS Audio Manager Edge

Built in:

- Zone management allowing you to divide up to 200 speakers into 20 zones.
- Content management for music and live/pre-recorded announcements.
- Scheduling to decide when and where to play content.
- Content prioritization to ensure urgent messages interrupt the schedule.
- Health monitoring for remote discovery of system errors.
- User management to control who has access to what features.

For more details, see the datasheet on [axis.com/products/axis-audio-manager-edge/support](https://axis.com/products/axis-audio-manager-edge/support)

### AXIS Audio Manager Pro

For larger and more advanced systems. Sold separately. See separate datasheet for specifications.

For specifications, see the datasheet on [axis.com/products/axis-audio-manager-pro/support](https://axis.com/products/axis-audio-manager-pro/support)

### AXIS Audio Manager Center

AXIS Audio Manager Center is a cloud service for remote access and management of multi-site systems.

For specifications, see the datasheet on [axis.com/products/axis-audio-manager-center/support](https://axis.com/products/axis-audio-manager-center/support)

## Audio software

### Audio streaming

One-way/two-way with optional full-duplex echo cancellation. Mono.

### Audio encoding

AAC LC 8/16/32/48 kHz, G.711 PCM 8 kHz, G.726 ADPCM 8 kHz, Axis  $\mu$ -law 16 kHz, WAV, MP3 in mono/stereo from 64 kbps to 320 kbps. Constant and variable bit rate. Sampling rate from 8 kHz up to 48 kHz. Opus

## System integration

### Application Programming Interface

Open API for software integration, including VAPIX®, One-click cloud connection, AXIS Camera Application Platform (ACAP).

### Video management software

Compatible with AXIS Camera Station Edge, AXIS Camera Station Pro, AXIS Camera Station 5, and video management software from Axis' partners available at [axis.com/vms](https://axis.com/vms).

### Mass notification

Singlewire InformaCast®, Intrado Revolution, Lynx, Alertus

### Unified communication

Verified compatibility:

**SIP clients:** 2N, Yealink, Cisco, Linphone, Grandstream  
**PBX/SIP servers:** Cisco Call Manager, Cisco BroadWorks, Avaya, Asterix, Grandstream  
**Cloud service providers:** Webex, Zoom

## SIP

**Supported SIP features:** Secondary SIP server, IPv6, SRTP, SIPS, SIP TLS, DTMF (RFC2976 and RFC2833), NAT (ICE, STUN, TURN)

**RFC 3261:** INVITE, CANCEL, BYE, REGISTER, OPTIONS, INFO

**DTMF (RFC 4733/RFC 2833)**

---

### Event conditions

Audio: audio clip playing, speaker test result

Call: state, state change

Device status: IP address blocked, IP address removed, live stream active, network lost, new IP address, ring power overcurrent protection, system ready

Digital audio input status

Edge storage: recording ongoing, storage disruption, storage health issues detected

I/O: digital input is active, manual trigger, virtual input is active

MQTT: stateless

Scheduled and recurring: schedule

---

### Event actions

Audio: run automatic speaker test

Audio clips: play, play while the rule is active, stop playing

I/O: toggle I/O once, toggle I/O while the rule is active

LEDs: flash status LED, flash status LED while the rule is active

Light and siren: run light profile, run light profile while the rule is active, stop activities

MQTT: send MQTT publish message

Notifications: HTTP, HTTPS, TCP and email

Recordings: record audio, record audio while the rule is active

Security: erase configuration

SNMP traps: send message, send message while the rule is active

---

### Built-in installation aids

Test tone verification and identification

---

### Functional monitoring

Auto Speaker Test (verification via built-in microphone)

## Approvals

### EMC

CISPR 24, CISPR 35, CISPR 32 Class B, EN 55024,

EN 55035, EN 55032 Class B, EN 61000-6-1,

EN 61000-6-2, EN 61000-6-3, EN 61000-6-4

**Australia/New Zealand:** RCM AS/NZS CISPR 32 Class B

**Canada:** ICES-3(B)/NMB-3(B)

**Japan:** VCCI Class B

**Korea:** KS C 9835, KS C 9832 Class B

**USA:** FCC Part 15 Subpart B Class B

---

### Safety

CAN/CSA C22.2 No. 62368-1,

CAN/CSA-C22.2 No. 60950-22, IEC/EN/UL 62368-1,

IEC/EN/UL 60950-22, KC-Mark

---

### Environment

IEC 60068-2-1, IEC 60068-2-2, IEC 60068-2-6,

IEC 60068-2-14, IEC 60068-2-27, IEC 60068-2-78,

IEC/EN 60529 IP44<sup>1</sup>, Nema 250 3R

---

### Cybersecurity

ETSI EN 303 645, BSI IT Security Label

---

## Network

### Network protocols

IPv4/v6<sup>2</sup>, HTTP, HTTPS<sup>3</sup>, SSL/TLS<sup>3</sup>, QoS Layer 3 DiffServ, FTP, SFTP, CIFS/SMB, SMTP, Bonjour, UPnP<sup>TM</sup>, SNMP v1/v2c/v3 (MIB-II), DNS, DynDNS, NTP, RTSP, RTP, TCP, UDP, IGMPv1/v2/v3, RTCP, ICMP, DHCP, ARP, SOCKS, SSH, NTCIP, SIP

---

## Cybersecurity

### Edge security

**Software:** Signed OS, brute force delay protection, digest authentication and OAuth 2.0 RFC6749 OpenID Authorization Code Flow for centralized ADFS account management, password protection, AES-XTS-Plain64 256bit SD card encryption

**Hardware:** Axis Edge Vault cybersecurity platform Secure element (CC EAL 6+), Axis device ID, secure keystore, secure boot

---

### Network security

IEEE 802.1X (EAP-TLS, PEAP-MSCHAPv2)<sup>3</sup>, IEEE 802.1AR, HTTPS/HSTS<sup>3</sup>, TLS v1.2/v1.3<sup>3</sup>, Network Time Security (NTS), X.509 Certificate PKI, host-based firewall

---

1. If installed according to the installation guide.

2. Audio synchronization with IPv4 only.

3. This product includes software developed by the OpenSSL Project for use in the OpenSSL Toolkit. (openssl.org), and cryptographic software written by Eric Young (eay@cryptsoft.com).

## Documentation

*AXIS OS Hardening Guide*

*Axis Vulnerability Management Policy*

*Axis Security Development Model*

AXIS OS Software Bill of Material (SBOM)

To download documents, go to [axis.com/support/cybersecurity/resources](https://axis.com/support/cybersecurity/resources)

To read more about Axis cybersecurity support, go to [axis.com/cybersecurity](https://axis.com/cybersecurity)

## System on chip (SoC)

### Model

NXP i.MX 8M Nano

### Memory

1024 MB RAM, 1024 MB Flash

## General

### Casing

Aluminium casing, IP44 rated

Colors: white, black

For repainting instructions, go to [axis.com/products/axis-c1110-e/support](https://axis.com/products/axis-c1110-e/support)

For information about the impact on warranty, go to [axis.com/warranty-implication-when-repainting](https://axis.com/warranty-implication-when-repainting).

### Power

Power over Ethernet (PoE) IEEE 802.3af/802.3at

Type 1 Class 3 (max 12.95 W)

### Connectors

RJ45 10BASE-T/100BASE-TX PoE I/O: 4-pin 2.5 mm terminal block for 2x supervised configurable I/Os

### LED indicators

Status LED, configurable front-facing RGB LED

### Storage

Support for microSD/microSDHC/microSDXC card

Max. size 1 TB

For SD card recommendations see [www.axis.com](https://www.axis.com)

### Reliability

Designed for 24/7 operation.

### Operating conditions

-30 °C to 50 °C (-22 °F to 122 °F)

Humidity 10–100% RH (condensing)

### Storage conditions

-40 °C to 65 °C (-40 °F to 149 °F)

Humidity 5–95% RH (non-condensing)

### Dimensions

Height: 207 mm (8.15 in)

Width: 310 mm (12.2 in)

Length: 165 mm (6.50 in)

### Weight

4100 g (9.04 lbs)

### Box content

Speaker, installation guide, terminal block connector, connector guard, cable gaskets, owner authentication key

### Optional accessories

AXIS C8310 Volume Controller, AXIS Surveillance Cards

For more accessories, see [axis.com](https://axis.com)

### Languages

English, German, French, Spanish, Italian, Russian, Simplified Chinese, Japanese, Korean, Portuguese, Polish, Traditional Chinese, Dutch, Czech, Swedish, Finnish, Turkish, Thai, Vietnamese

### Warranty

5-year warranty, see [axis.com/warranty](https://axis.com/warranty)

### Part numbers

Available at [axis.com/products/axis-c1110-e#part-numbers](https://axis.com/products/axis-c1110-e#part-numbers)

## Tools

### Design

AXIS Site Designer

Available at [axis.com](https://axis.com)

### Installation

AXIS Device Manager, product selector, accessory selector

Available at [axis.com](https://axis.com)

## Sustainability

### Substance control

PVC free, BFR/CFR free in accordance with JEDEC/ECA Standard JS709

RoHS in accordance with EU RoHS Directive 2011/65/EU/ and EN 63000:2018

REACH in accordance with (EC) No 1907/2006. For SCIP UUID, see [echa.europa.eu](http://echa.europa.eu)

---

### Materials

Renewable carbon-based plastic content: 51%  
(recycled: 0%, bio-based: 51%, carbon capture based: 0%)

Screened for conflict minerals in accordance with OECD guidelines

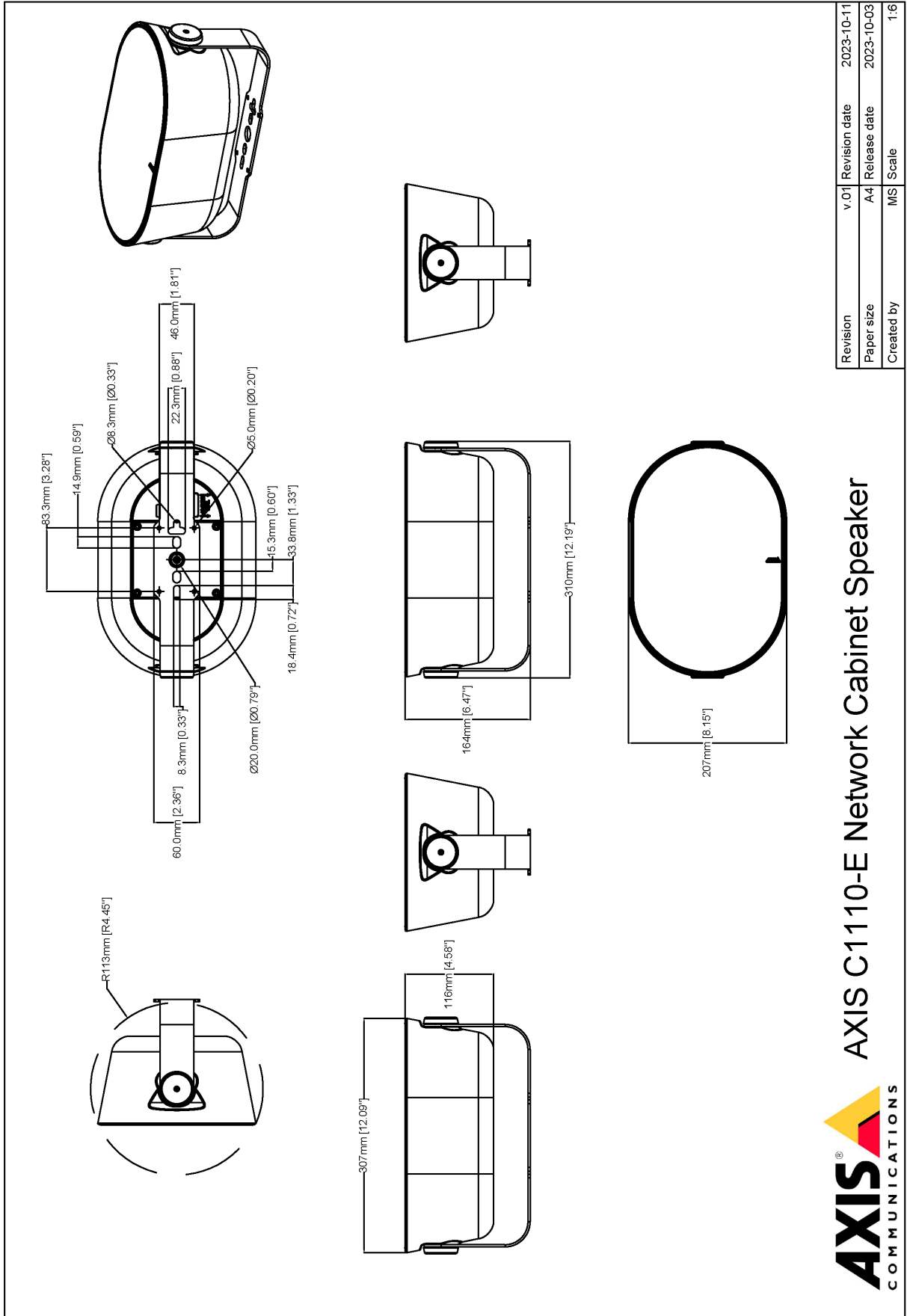
To read more about sustainability at Axis, go to [axis.com/about-axis/sustainability](http://axis.com/about-axis/sustainability)

---

### Environmental responsibility

[axis.com/environmental-responsibility](http://axis.com/environmental-responsibility)

Axis Communications is a signatory of the UN Global Compact, read more at [unglobalcompact.org](http://unglobalcompact.org)



Revision	v.01	Revision date	2023-10-11
Paper size	A4	Release date	2023-10-03
Created by	MS	Scale	1:6

© 2023 Axis Communications

**AXIS** COMMUNICATIONS  
**AXIS C1110-E Network Cabinet Speaker**

www.axis.com

