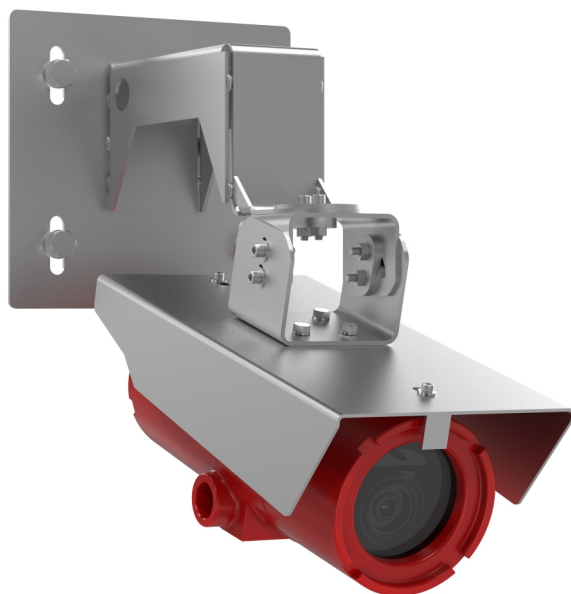


F101-A XF Q1785 Explosion-Protected Network Camera

First-class fixed box for hazardous areas

F101-A XF Q1785 features a 32x optical zoom for 2 MP/HDTV 1080p image quality up to 60 fps. It's certified worldwide with Class I/II/III, Division 1 and Zone 1 for use in explosion-prone applications. It's enclosed in an IP66 rated aluminum red housing and can withstand extreme temperatures from -40 °C to 60 °C (-40 °F to 140 °F). It comes with AXIS Guard Suite pre-installed and Active Gatekeeper. It includes Electronic Image Stabilization, Forensic WDR, Lightfinder, barrel distortion correction and scene profiles. Plus, built-in PoE support and Zipstream for simplified installation and lower bandwidth and storage requirements.

- > **Certified for Class I/II/III, Division 1 and Zone 1**
- > **32x optical zoom**
- > **2 MP, HDTV 1080p at up to 60 fps**
- > **Forensic WDR and Lightfinder**
- > **-40 °C to 60 °C (-40 °F to 140 °F)**



F101-A XF Q.1785 Explosion-Protected Network Camera

Support for AXIS Camera Application Platform enabling installation of third-party applications, see axis.com/acap

Camera	
Image sensor	1/2.8" progressive scan RGB CMOS
Lens	Varifocal 4.3–137 mm, F1.4–4.0 Horizontal field of view: 60°–2.3° Vertical field of view: 39°–1.3° Autofocus
Minimum illumination	Color: 0.16 lux at 50 IRE F1.4 B/W: 0.03 lux at 50 IRE F1.4
Shutter speed	1/66500 s to 1 s
System on chip (SoC)	
Model	ARTPEC-6
Memory	1 GB RAM, 512 MB Flash
Video	
Video compression	H.264 (MPEG-4 Part 10/AVC) Baseline, Main and High Profiles Motion JPEG
Resolution	1920x1080 HDTV 1080p (16:9) to 160x120 (4:3) Maximum pixel density with 32x optical zoom: 25 m (82 ft): 1912 px/m 50 m (164 ft): 956 px/m 250 m (820 ft): 191 px/m
Frame rate	With WDR: Up to 30/25 fps (60/50 Hz) in all resolutions Without WDR: Up to 60/50 fps (60/50 Hz) in all resolutions
Video streaming	Multiple, individually configurable streams in H.264 and Motion JPEG Ziptream technology in H.264 Controllable frame rate and bandwidth VBR/MBR H.264
Image settings	Saturation, contrast, brightness, sharpness, Forensic WDR, defogging, white balance, exposure mode, exposure zones, compression, mirroring of images, electronic image stabilization, barrel distortion correction, text and image overlay, dynamic text and image overlay, privacy masks Rotation: auto, 0°, 90°, 180°, 270° including Corridor Format Scene profiles: forensic, vivid, traffic overview, backlit entrance
Pan/Tilt/Zoom	Digital ptz, 32x optical zoom, 12x digital zoom, preset positions
Network	
Security	Password protection, IP address filtering, HTTPS ^a encryption, IEEE 802.1X ^a network access control, digest authentication, user access log, centralized certificate management, brute force delay protection
Network protocols	IPv4, IPv6 USGv6, ICMPv4/ICMPv6, HTTP, HTTP/2, HTTPS ^a , TLS ^a , QoS Layer 3 DiffServ, FTP, SFTP, CIFS/SMB, SMTP, mDNS (Bonjour), UPnP [®] , SNMP v1/v2c/v3 (MIB-II), DNS/DNSv6, DDNS, NTP, NTS, RTSP, RTP, SRTP, TCP, UDP, IGMPv1/v2/v3, RTCP, ICMP, DHCPv4/v6, ARP, SSH, LLDP, CDP, MQTT v3.1.1, Syslog, Link-Local address (ZeroConf)
System integration	
Application Programming Interface	Open API for software integration, including VAPIX [®] and AXIS Camera Application Platform; specifications at axis.com One-click cloud connection ONVIF [®] Profile G, ONVIF [®] Profile S, and ONVIF [®] Profile T, specification at onvif.org
Event triggers	Analytics, supervised external input, edge storage events, virtual inputs through API, shock detection MQTT subscribe
Event actions	Pre- and post-alarm video buffering File upload: FTP, SFTP, HTTP, HTTPS, network share and email MQTT publish Notification: email, HTTP, HTTPS, TCP and SNMP trap
Data streaming	Event data
Built-in installation aids	Remote zoom, pixel counter, leveling assistant, autorotation
Analytics	
Applications	Included AXIS Motion Guard, AXIS Fence Guard, AXIS Loitering Guard, autotracking 2, active gatekeeper Basic analytics (not to be compared with third-party analytics): object removed, enter/exit detector, object counter
General	
Casing	IP66-rated, powdercoated aluminum chassis De-icing control ^b Casing manufactured and certified by Spectrum Camera Solutions, LLC
Sustainability	PVC free
Power	Camera: Power over Ethernet (PoE) IEEE 802.3af/802.3at Type 1 Class 3, typical 7.7 W, max 8.7 W Heater: 12–30 V AC/DC, 25 W 12–30 V AC/DC for heaters is required for operating temperatures below 0 °C (32 °F).
Connectors	2 x 3/4" NPT cable entries RJ45 10BASE-T/100BASE-TX PoE 2-pin terminal block connector for heater
Storage	Pre-installed AXIS Surveillance microSDXC Card 128 GB Support for SD card encryption (AES-XTS-Plain64 256bit) Support for recording to network-attached storage (NAS) For SD card and NAS recommendations see axis.com
Operating conditions	Hazardous location operating temperature: Zone system: -50 °C to 60 °C (-58 °F to 140 °F) Class/Division system: -40 °C to 60 °C (-40 °F to 140 °F) Humidity 10–100% RH (condensing) See section Power for requirements in temperatures below 0 °C (32 °F).
Storage conditions	-40 °C to 65 °C (-40 °F to 149 °F)
Approvals	EMC EN 55032 Class A, FCC Part 15 Subpart B Class A, ICES-003 Class A, VCCI Class A, RCM AS/NZS CISPR 32 Class A, EN 55024, EN 61000-6-1, EN 61000-6-2 Environment ANSI/NEMA 250 4X, ANSI/IEC/EN/CAN/CSA-C22.2 60529 IP66, CSA-C22.2 No. 0.5, CSA-C22.2 No. 25, CSA-C22.2 No. 30, CSA-C22.2 No. 94.2 Explosion FM Class 3600:2018, FM Class 3615:2018, FM Class 3616:2011, ANSI/ISA/EN/IEC/CAN/CSA-C22.2 60079-0, ANSI/UL/EN/IEC/CAN/CSA-C22.2 60079-1, ANSI/UL/EN/IEC/CAN/CSA-C22.2 60079-31 Network NIST SP500-267
Certifications	USA: Class I Division 1 Groups BCD T6 Ta = -40°C to 60°C, Type 4X, IP66 Class II/III Division 1 Groups EFG Ta = -40°C to 60°C, Type 4X, IP66 Class I, Zone 1, AEx db IIB+H2 Gb Ta = -50°C to 60°C, Type 4X, IP66 Zone 21, AEx tb IIIC Db Ta = -50°C to 60°C, Type 4X, IP66 Certificate: FM18US0262X Canada: Class I Division 1 Groups BCD T6 Ta = -50°C to 60°C, Type 4X, IP66 Class II/III Division 1 Groups EFG Ta = -50°C to 60°C, Type 4X, IP66 Class I, Zone 1, Ex db IIB+H2 T5 Gb Ta = -50°C to 60°C, Type 4X, IP66 Zone 21, Ex tb IIIC T85°C Db Ta = -50°C to 60°C, Type 4X, IP66 Certificate: FM18CA0126X ATEX: II 2 G Ex db IIB+H2 T5 Gb Ta = -50°C to 60°C, IP66 II 2 D Ex tb IIIC T85°C Db Ta = -50°C to 60°C, IP66 Certificate: FM18ATEX0073X IECEX: Ex db IIB+H2 T5 Gb Ta = -50°C to 60°C, IP66 Ex tb IIIC T85°C Db Ta = -50°C to 60°C, IP66 Certificate: IECEX FMG 18.0029X
Dimensions	13.85 x 7.20 x 6.01 in (352 x 183 x 153 mm)
Weight	14 lb (6.2 kg)
Included accessories	Installation Guide, Windows [®] decoder 1-user license, Weathershield, AXIS Surveillance microSDXC Card 128 GB, 3/4" NPT to M20x1.5 thread adapter

Optional accessories	Wall Mount, Pole Mount, Corner Mount For more accessories, see axis.com
Video management software	AXIS Companion, AXIS Camera Station, video management software from Axis Application Development Partners available on axis.com/vms
Languages	English, German, French, Spanish, Italian, Russian, Simplified Chinese, Japanese, Korean, Portuguese, Traditional Chinese
Warranty	5-year warranty, see axis.com/warranty

- a. *This product includes software developed by the OpenSSL Project for use in the OpenSSL Toolkit. (openssl.org), and cryptographic software written by Eric Young (eay@cryptsoft.com).*
- b. *Internal heaters to defrost ice build-up, activated by HTTP API (VAPIX).*

Environmental responsibility:

axis.com/environmental-responsibility