

AXIS W120 Body Worn Camera

For live streaming, and tracking – your way

AXIS W120 Body Worn Camera is a fully connected wearable camera featuring built-in LTE/4G, Wi-Fi[®] and Bluetooth[®], which enables direct streaming with AXIS Body Worn Live. It delivers clear audio with noise suppression and exceptional image quality. Electronic image stabilization guarantees the highest possible forensic value. The camera also delivers detailed status information via its LCD screen. AXIS W120 is robust, easy-to-use and features the KlickFast mounting system. It offers up to 15 hours of battery time and can be charged on-the-go with any USB-C[®] charger. Recording can be activated automatically, and the location of the camera is continuously recorded thanks to the built-in GNSS receiver.

- > [Live streaming via LTE/4G](#)
- > [Location tracking](#)
- > [Always sharp images](#)
- > [Excellent sound quality](#)
- > [Multiple layers of encryption](#)



AXIS W120 Body Worn Camera

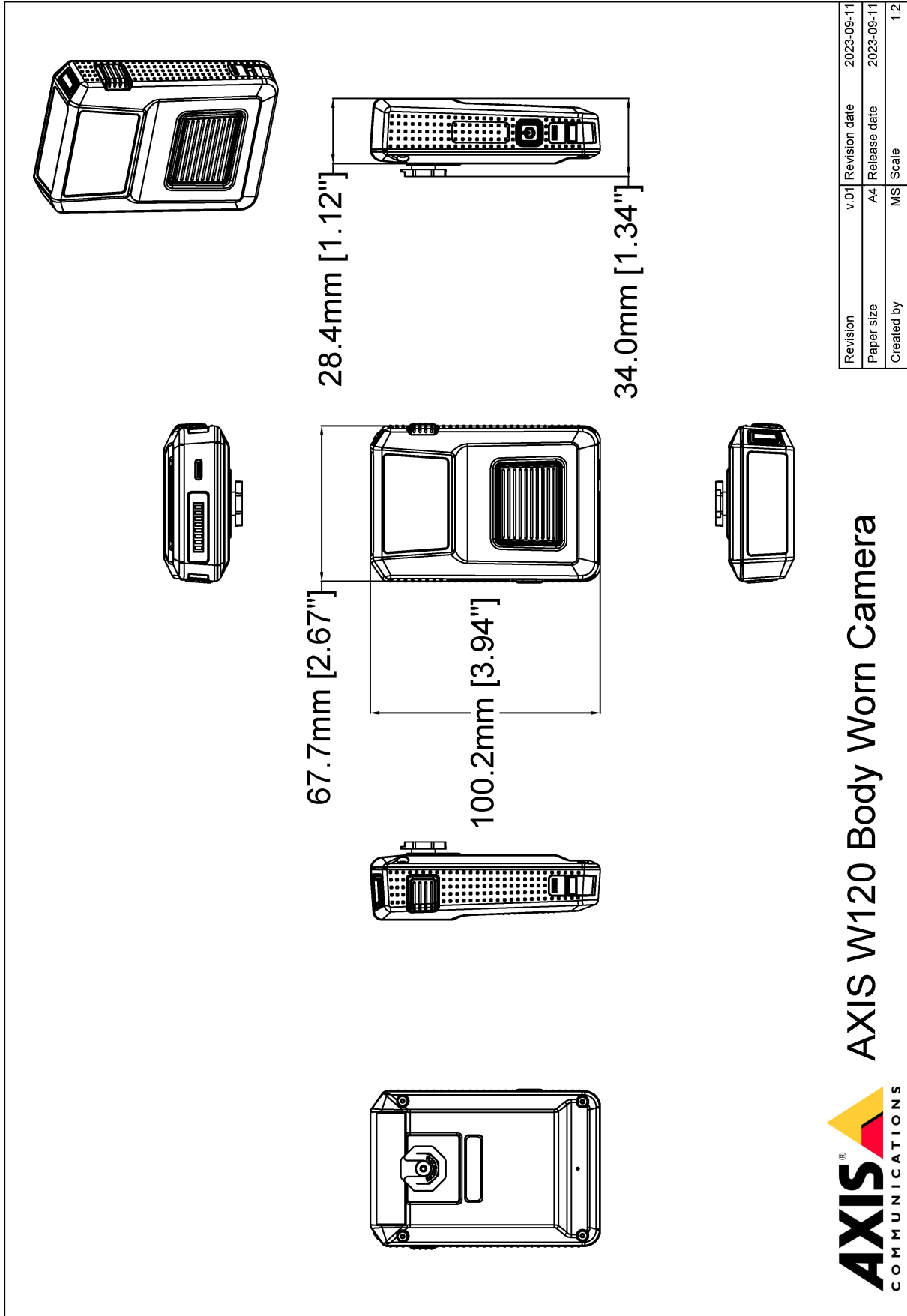
| | | | |
|---------------------------|--|-----------------------------|---|
| Camera | | Storage | 64 GB non-volatile memory, up to 30 hours of recorded video AES256 encryption standard |
| Image sensor | 1/2.9" progressive scan RGB CMOS Sensitivity: 0.1 lux | Throughput | Camera to system controller: 100 Mbit/s |
| Lens | Focal length, 2.3 mm Horizontal field of view: 137° Vertical field of view: 76° Fixed iris, F2.1 | Recording | Configurable audio and video pre-buffer 0, 15, 30, 60, 90, and 120 seconds |
| Shutter speed | 1/20000 s to 1/25 s with 50 Hz 1/20000 s to 1/30 s with 60 Hz | Positioning system | GPS, GLONASS, Galileo, BeiDou |
| Video | | Location | Track, start and end |
| Video compression | H.264 (MPEG-4 Part 10/AVC) High Profile | Sensor | 3-axis gyroscope and accelerometer, compass |
| Resolution | 1920x1080, 1280x720 | User interface | Color IPS TFT display, 0.96 inch, 160x80 pixels Status indicators Audio and vibration feedback |
| Frame rate | 25 fps at 50 Hz 30 fps at 60 Hz | Wireless interface | Bluetooth® 5.1 Low Energy and Classic Wi-Fi® 5 a/b/g/n/ac @ 2.4 GHz, 5 GHz LTE (US): Bands B2, B4, B5, B12, B13, B14, B25, B26, B66, B71 CAT4 LTE (EU): Bands B1, B3, B7, B8, B20, B28 CAT4 |
| WDR | WDR | Casing | IP67-rated Plastic casing Drop tested up to 2 m |
| Image settings | Electronic image stabilization (720p), barrel distortion correction | Color | Black NCS S 9000-N White NCS S 1002-B |
| Video streaming | Axis Zipstream for body worn | Mounting | Klick Fast™ System |
| Audio | | Connectors | Pogo pin pads USB (for Axis accessories and charging using a cable with a USB Type-C® connector) |
| Audio encoding | AAC-LC One channel: 48 kHz, 128 kbps Two channels (optimized for post-processing mode): 48 kHz, 2x128 kbps | SIM card | Nano-SIM (4FF) |
| Audio input/output | Built-in dual microphones | Operating conditions | Temperature: -20 °C to 50 °C (-4 °F to 122 °F) Maximum temperature (intermittent, <1 hour): 55 °C (131 °F) Humidity: 10–100% RH (condensing) |
| Functionality | Voice enhancement | Charging conditions | Temperature: 0 °C to 40 °C (32 °F to 104 °F) Charging time: <6.5 hours in 0–15 °C (32–59 °F) <4 hours in 15–30 °C (59–86 °F) <5.5 hours in 30–40 °C (86–104 °F) Humidity: 5–95% RH (non-condensing) |
| Approvals | | Storage conditions | Temperature (< 3 months): -20 °C to 45 °C (-4 °F to 113 °F) Temperature (> 3 months): 23 °C to 27 °C (73 °F to 81 °F) Optimal temperature: 25 °C (77 °F) Humidity: 5–95% RH (non-condensing) |
| Supply chain | TAA compliant | Dimensions | For the overall product dimensions, see the dimension drawing in this datasheet. |
| EMC | EN 55032 Class B, EN 55035, EN 61000-6-1, EN 61000-6-2, EN 61000-6-3, EN 61000-6-4, Canada: ICES-3(B)/NMB-3(B) USA: FCC Part 15 Subpart B Class B | Weight | 200 g (0.44 lb) |
| Safety | CAN/CSA C22.2 No. 62368-1 ed. 3, IEC/EN/UL 62368-1 ed. 3, RCM AS/NZS 62368.1:2018 | Optional accessories | Klick Fast™ System for Body worn camera mounts AXIS TW1200 Body Worn Mini Bullet Sensor AXIS TW1201 Body Worn Mini Cube Sensor AXIS TW1906 Battery Replacement AXIS Body Worn Assistant app for Android, iOS For more accessories, see axis.com/bodyworn |
| Environment | IEC 60068-2-1, IEC 60068-2-2, IEC 60068-2-14, IEC 60068-2-78, IEC/EN 60529 IP67 MIL-STD-810H (Method 501.7, 503.7, 505.7, 509.7, 512.6, 516.8) | Warranty | The product, including the battery, is subject to a 3-year warranty period, in accordance with the terms and conditions stated in Axis 5 Year Limited Hardware Warranty available on axis.com/warranty ("3-year Warranty Period"). In addition to the terms and conditions in the Axis 5 Year Limited Hardware Warranty, the warranty doesn't cover battery degradation if the battery has undergone more than 500 charge cycles, if the camera has been used or stored in temperatures outside the specifications in the datasheet, or if the instructions in the product's user manual haven't been followed. Replacement of the battery during the 3-year Warranty Period carried out by any other party than Axis (or an RMA partner on behalf of Axis) will void the main item's warranty. Contact Axis Support or your reseller for battery- or service-related matters. |
| Wireless | AS/CA S042.1, AS/CA S042.4, AS/NZS 4268, EN 50566, EN 300328, EN 300440, EN 301893, EN 303413, EN 301489-1, EN 301908-1, EN 301489-17, EN 301489-19, EN 301489-52, EN 301908-13, EN 62209-2, FCC Part 2 Subpart J, FCC Part 15 Subpart C, FCC Part 15 Subpart E, FCC Part 22 Subpart H, FCC Part 24 Subpart E, FCC Part 27, FCC Part 90, IFT, RSS-102, RSS-130, RSS-132, RSS-133, RSS-139, RSS-140, RSS-247, RSS-Gen, WPC | Sustainability | Substance control RoHS in accordance with EU RoHS Directive 2011/65/EU/ and EN 63000:2018 REACH in accordance with (EC) No 1907/2006. For SCIP UUID, see echa.europa.eu |
| Cybersecurity | ETSI EN 303 645 | | |
| Cybersecurity | | | |
| Edge security | Software: Signed firmware, AES-XTS-Plain64 256bit encryption Hardware: Secure boot, Axis Edge Vault with Axis device ID, signed video, secure keystore (CC EAL4+ certified hardware protection of cryptographic operations and keys). CJIS compliant encrypted internal storage (AES256) | | |
| Network security | IEEE 802.1X (EAP-TLS, PEAP-MSCHAPv2), IEEE 802.1AR, HTTPS/HSTS ^a , TLS v1.2/v1.3 ^a | | |
| Documentation | Axis body worn cameras – system security white paper, available at axis.com/learning/white-papers Axis Vulnerability Management Policy Axis Security Development Model AXIS OS Software Bill of Material (SBOM) To download documents, go to axis.com/support/cybersecurity/resources To read more about Axis cybersecurity support, go to axis.com/cybersecurity | | |
| General | | | |
| Battery | Li-ion, 3600 mAh Up to 15 hours operating time in 720p ^b Up to 13.5 hours operating time in 1080p ^b | | |

Environmental responsibility axis.com/environmental-responsibility
Axis Communications is a signatory of the UN Global Compact, read more at unglobalcompact.org

a. *This product includes software developed by the OpenSSL Project for use in the OpenSSL Toolkit. (openssl.org), and cryptographic software written by Eric Young (eay@cryptsoft.com).*

b. *With pre-buffer, and fewer than 500 charge cycles.*

Dimension drawing



AXIS W120 Body Worn Camera



www.axis.com

